



# St. Louis Symphony Orchestra

**Stéphane Denève, Music Director**  
**Víkingur Ólafsson, Piano**

---

Sunday, March 29, 2026  
3:00pm

---

Foellinger Great Hall



# PROGRAM

## St. Louis Symphony Orchestra

STÉPHANE DENÈVE, Music Director and Conductor

VÍKINGUR ÓLAFSSON, Piano

---

### LUDWIG VAN BEETHOVEN

(1770-1827)

*The Consecration of the House Overture, Op. 124*

### MONI (JASMINE) GUO

(b. 1993)

*the sound of where i came from* (乡音 Xiāng Yīn)

### KEVIN PUTS

(b. 1972)

#### Concerto for Orchestra

Hymn for the Hurting

Caccia No. 1

Music Box with Arietta

Toccata

Sicilienne

Ecco la Marcia? (Caccia No. 2)

### 20-MINUTE INTERMISSION

---

### LUDWIG VAN BEETHOVEN

(1770-1827)

*Piano Concerto No. 5 in E-flat Major, "Emperor"*

Allegro

Adagio un poco mosso—

Rondo (Allegro)

Víkingur Ólafsson, piano

# THE ACT OF GIVING

## Thank you for sponsoring this performance.

With deep gratitude, Krannert Center for the Performing Arts thanks all 2025-2026 Patron Sponsors and Corporate and Community Sponsors, and all those who have invested in Krannert Center.

In addition to performance sponsors, Krannert Center is deeply grateful for the generosity and steadfast support from our season-long patrons and corporate and community partners showcased in the Philanthropy & Advocacy section of our program book. These relationships form the cornerstone of our ability to bring unforgettable performances and enriching experiences to our audiences.

### THIS EVENT IS SUPPORTED BY:

---

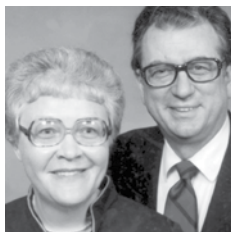
#### Corporate & Community Bronze Sponsor

---



#### Endowed Underwriters

---



#### MARILYN PFLEDERER ZIMMERMAN & VERNON K. ZIMMERMAN

---

Krannert Center honors the memory of Endowed Underwriters **Marilyn Pflederer Zimmerman & Vernon K. Zimmerman**. Their lasting investment in the performing arts and our community will allow future generations to experience worldclass performances such as this one.

#### Endowed Sponsors

---



#### JOAN & PETER HOOD

---

35 Previous sponsorships  
2 Current sponsorships

#### Endowed Co-Sponsor

---



#### JO ANN TRISLER

---

#### Patron Underwriters

---



#### CAROL & WILLIS COLBURN

---

12 Previous sponsorships  
2 Current sponsorships

#### Patron Sponsors

---



#### ANNE MISCHAKOFF HEILES & WILLIAM HEILES

---

34 Previous sponsorships  
7 Current sponsorships



#### SHIRLEY & ARTHUR TRAUGOTT

---

26 Previous sponsorships  
1 Current sponsorship

## THE ACT OF GIVING

---

### PATRON CO-SPONSORS

---



#### CAROL BERTHOLD

---

28 Previous sponsorships  
2 Current sponsorships



#### HARRIET & HERSCHEL CLINE

---

7 Previous sponsorships  
2 Current sponsorships



#### SUSAN & JOHN COBB

---

First Time Sponsors  
1 Current sponsorship



#### JONGIN CRAGGS

---

1 Previous sponsorship  
1 Current sponsorship



#### ANNE & DAVID SHARPE

---

17 Previous sponsorships  
2 Current sponsorships



#### KAREN WILKINSON

---

In loving memory of Bill

11 Previous sponsorships  
1 Current sponsorship

### SEASON-LONG PATRON SPONSORS

---

**A. MARK NEUMAN**  
**ANONYMOUS**  
**PHYLLIS ROBESON & FAMILY**  
**JO & THOMAS EMERSON**



# COME BE CONNECTED.

Bringing the community together



krannert center

# PROGRAM NOTES

## ***THE CONSECRATION OF THE HOUSE* OVERTURE, OP. 124**

Ludwig van Beethoven

Born 1770 in Bonn, Germany

Died 1827 in Vienna, Austria

---

In 1822, the newly rebuilt theatre in Vienna's Josefstadt was officially reopened. Then as now, such occasions were a cause for celebration, and music was central to the pomp and ceremony.

For Josefstadt, Beethoven's incidental music for the play *The Ruins of Athens* was pressed into service, having been used 10 years earlier for the opening of the Royal Theatre in Pest. A new play, *The Consecration of the House*, was cobbled together by Viennese playwright Carl Meisl, while Beethoven revised his music and added new numbers to fit.

The original *Ruins* overture, however, was thought too insubstantial for Vienna's festivities, and Beethoven devised two plans for a new, more imposing, overture: one in free style, the other (his eventual choice) in the "strict" style of Handel. For Beethoven, this meant an old-fashioned French overture with a majestic opening followed by an exciting fugue built up from intricately weaving melodic lines.

The music begins with the brisk snapping rhythms that give a French overture its grandeur. The bassoon, with good-humored virtuosity, introduces the first of the melodic ideas underneath a trumpet fanfare. A brief moment of quiet playfulness follows before the overture launches into the extensive fugal section. But what's

noteworthy here is not Beethoven's mastery of strict counterpoint so much as the colorful development and variation in the music. The sprightly theme and rapid passagework drives the overture to a spirited conclusion.

—Yvonne Frindle © 2026

**First performance:** October 3, 1822, for the reopening of the Theater in der Josefstadt, Vienna

**First SLSO performance:** September 19, 1968, Walter Susskind conducting

**Most recent SLSO performance:** September 29, 1984, Leonard Slatkin conducting

**Instrumentation:** 2 flutes, 2 oboes, 2 clarinets, 2 bassoons, 4 horns, 2 trumpets, 3 trombones, timpani, strings

**Approximate duration:** 11 minutes

**THE SOUND OF WHERE I CAME FROM** 乡音**Moni (Jasmine) Guo****Born 1993 in Taiyuan, Shanxi, China***The composer writes:*

This piece began as an exploration of the idea of “home.” As I researched the culture of my hometown and listened to folk tunes, I couldn’t stop hearing my grandmother’s voice in my head, and my childhood self calling back in the same dialect. There’s a saying in my home province:

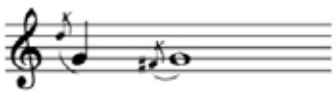
做甚唱甚，想甚唱甚，见甚喝甚

(Sing what you do, sing what you think,  
sing what you see)

In my case, it’s “write what you think.” That call-and-response became the seed of this work: I translated the way we used to call each other—“grandma” and “little moni”—into musical pitches.



Grandma: little moni (Hsiao-Muh-Nyct)



Mc: grandma (Lào-lao)

Writing this piece was unexpectedly emotional. When I first left home as a teenager, I missed my grandma so deeply that I quietly decided not to think of her when we were apart. That resolve lasted for years—until I began working on this piece. Composing it opened a sealed box of longing, and memories of her came flooding back.

My grandmother now has Alzheimer’s. She can no longer say my name, but the sound of her voice lives on in me.

—Moni (Jasmine) Guo © 2025

**First performance:** November 20, 2025, Shira Samuels-Shragg conducting the Dallas Symphony Orchestra

**First and most recent SLSO performances:**

March 27 and March 28, 2026,

Stéphane Denève conducting

**Instrumentation:** 3 flutes, 3 oboes, 3 clarinets,

3 bassoons, 4 horns, 2 trumpets, 3 trombones, tuba,

timpani, percussion, harp, piano (doubling celeste), strings

**Approximate duration:** 7 minutes

**About the Composer:** Moni (Jasmine) Guo is a film and concert composer and classical pianist from China. She has appeared as both a performer and composer in Asia, Europe, South America, and the United States, and her music has been performed by renowned soloists such as Bella Hristova and Stefano Greco, and ensembles such as IIIZ+ (Three Zee Plus), Deviant Septet, Dallas Symphony Orchestra, the Shepherd School Symphony Orchestra, and the Cleveland Institute of Music Symphony Orchestra. Her piece *Fallen Skin, Flying Wings* was performed in the 2021 Hear Now Music Festival in Los Angeles, at concert:nova—Made in Cincinnati (2023), and at the 2023 California Festival. She is passionate about using music to encourage and comfort others, and also hopes to use her work to bridge Western and Eastern culture.

## PROGRAM NOTES

---

Over the years, she has received numerous awards and fellowships, including the 2021 ASCAP Foundation Morton Gould Young Composer Award, was a featured composer in the 2023 American Composers Orchestra's EarShot program, and in 2023 was named in *Forbes China's* "100 Most Influential Chinese" list.

As a film composer, Guo has scored more than 40 short films and several features, with many of these appearing at film festivals worldwide. One short film, *Summer Ends*, was nominated for the Student Academy Awards of 2021; another, *Foreign Uncle*, was distributed by *The New Yorker*; her score for *de closin night* was nominated for Best Soundtrack in a Short Film at the 2022 Seattle Film Festival; and *Pianoman* was awarded Best Feature Documentary at the 2023 Nepal America International Film Festival. Her semi-improvised score for Robert Vignola's silent feature film *Enchantment* (1921), which she also performed as pianist, was commissioned by and showcased at the Cincinnati Art Museum.

She is an alumna of the Interlochen Arts Academy and holds degrees from the Peabody Institute of The Johns Hopkins University and Rice University. Having received her PhD from UCLA, Moni Guo is now Assistant Professor of Commercial Music Production at University of Cincinnati College-Conservatory of Music.

## CONCERTO FOR ORCHESTRA

Kevin Puts

Born 1972 in St. Louis, Missouri

---

Kevin Puts won the 2012 Pulitzer Prize for his opera *Silent Night*, and his music has been commissioned and performed by the Philadelphia Orchestra, Carnegie Hall, Opera Philadelphia, Minnesota Opera, and Yo-Yo Ma. In November 2022, his fourth opera, *The Hours*, had its staged premiere at the Metropolitan Opera, featuring Renée Fleming, Kelli O'Hara, and Joyce DiDonato. He teaches composition at the Peabody Institute in Baltimore and is currently the director of the Minnesota Orchestra Composer's Institute. He is also the St. Louis Symphony Orchestra's 2025-2026 Composer in Residence.

A concerto is usually a piece for a solo instrument accompanied by orchestra, but in the mid- 20th century, Paul Hindemith, Zoltán Kodály, and most famously Béla Bartók wrote so-called "concertos for orchestra"—virtuosic pieces for the orchestra as a whole. Witold Lutosławski, Joan Tower, and Jennifer Higdon, among others, followed in their footsteps, creating a modern genre. This kind of concerto, though, also harkens back to the Baroque concerto grosso, which was scored for an ensemble of equals (think of J.S. Bach's Brandenburg Concertos), and even before that, the word simply meant "to harmonize" or "a combination of voices or sounds"—an idea that fits almost any kind of music.

Puts' *Concerto for Orchestra* was commissioned by the SLSO and premiered in January 2023.

*The composer writes:*

*“Concerto for Orchestra* grew out of my friendship with conductor Stéphane Denève. It is dedicated both to him and to the musicians of the St. Louis Symphony Orchestra, for whom I have developed great admiration since their first performance of my music in 2004.

The creative entry point for me was the discovery of young Amanda Gorman’s beautiful poem “Hymn for the Hurting,” written in response to the horrific school shooting—an occurrence now routine in our country—in Uvalde, Texas, in May 2022. The music at the concerto’s opening—recalled briefly at various places throughout the piece—is my immediate musical reaction to it.

The title of the second movement, *Caccia*, is a reference to the 14th-century musical form depicting the hunt or the chase and flows directly from this opening hymn. It continues the opening movement’s focus on the various groups of instruments in the orchestra, beginning with the oboes and punctuated at all times by the orchestra’s three percussionists who play identical collections of six drums. *Music Box with Arietta*, by contrast, explores the gentler side of the percussion section, led here by cascading gestures played by the harp and celesta, giving way to a lyrical counterpoint of woodwinds.

*Toccata* is a quick exchange between the strings, the winds, and the percussion. Eventually the brass section asserts itself, cutting across these exchanges with brash, angular lines. A brief refrain of the opening movement leads to a gentle *Sicilienne* featuring nearly all instruments in the orchestra in lyrical ways, perhaps most prominently the piano. Another refrain introduces the final movement, another *Caccia*, this one containing a brief quotation from the Mozart opera which inspired it.”

—Benjamin Pesetsky © 2023

**First performance:** January 21, 2023, Stéphane Denève conducting the St. Louis Symphony Orchestra

**Most recent SLSO performance:** March 28, 2026, Stéphane Denève conducting

**Instrumentation:** 3 flutes (one doubling piccolo), 2 oboes, English horn, 3 clarinets, 3 bassoons (one doubling contrabassoon), 4 horns, 3 trumpets, 3 trombones, tuba, timpani, percussion, harp, piano (doubling celeste), strings

**Approximate duration:** 21 minutes

## PIANO CONCERTO NO. 5, “EMPEROR”

Ludwig Van Beethoven

Born 1770 in Bonn, Germany

Died 1827 in Vienna, Austria

---

The title “Emperor,” by which Beethoven’s Fifth Piano Concerto has been known since the early 19th century, possibly derives from one of the many apocryphal anecdotes that have come to us concerning the composer. According to this story, a French army officer stationed in Vienna attended the first performance of the concerto in the Austrian capital and was so moved by the grandeur of Beethoven’s music that he cried out: *C’est l’Empereur!* (It is the Emperor). Another, more likely, explanation is that it was coined by the English pianist and publisher Johann Baptist Cramer, which would explain why it caught on in English-speaking countries but not German-speaking ones and was likely unknown to Beethoven.

Even if he had been aware of the nickname, Beethoven would not have been flattered by the comparison with Napoleon. Once an ardent admirer of Bonaparte, he had become bitterly disenchanted as the French ruler revealed his ambition. The most famous evidence of this change of heart is the account of how, after hearing that Napoleon had assumed the throne, Beethoven scratched out the title of his Third Symphony, replacing “Buonapart” with the anonymous *Sinfonia eroica* (“Heroic Symphony”).

But despite its hazy origins, “Emperor” does not seem an inappropriate title. In 1809, when it was composed, this work far surpassed any and all other concertos in

its expression of majesty and heroism, and it retains an imperious position among piano concertos even today.

Beethoven establishes the lordly character of the “Emperor” Concerto with an innovative opening, in which three sonorous orchestral chords each give way to cadenza-like flourishes from the piano. This serves as a prelude to the usual orchestral opening, one of the grandest and longest in any concerto. The tone established here places the music in the Classical-period tradition of concerto openings in a quasi-martial character. Such “military” openings, with their march themes and proud bearing, are found in a number of Mozart’s keyboard concertos, as well as Beethoven’s own early *Piano Concerto in C Major, Op. 15*.

When the piano rejoins the proceedings, it is as a member of a thoughtfully integrated ensemble rather than merely an exalted soloist. Far from being just a virtuoso display piece, the piano concerto had acquired an almost symphonic character in Beethoven’s mind. The prominence the orchestra enjoys throughout this first movement is virtually unparalleled in the concerto literature. Beethoven has introduced an equitable balance between soloist and ensemble.

Also unparalleled was Beethoven’s handling of the solo cadenza. This was the first concerto in which the first-movement cadenza—traditionally improvised by the soloist—was written out in full. Beethoven would have had the integrity of the music in mind, but there was another, entirely pragmatic, motivation: this was the first of his piano concertos that he had been unable to introduce to the world himself—his deafness making public performance impossible. And so he wrote out a brief, integrated cadenza that echoed the magisterial

flourishes from the opening, adding a stern instruction for the soloist: *“Non si fa una Cadenza, ma s’attacca subito il seguente.”* (Do not make up a cadenza, but go straight on to what follows.) This proved to be an influential move—in all the major concertos since, only one (Brahms’ *Violin Concerto*) has invited the soloist to provide their own cadenza.

The slow second movement (Adagio) is a serene and deeply devout meditation, one of Beethoven’s most beautiful and tender creations. It concludes with a final musing by the piano that evolves magically into the principal theme of the third movement (Allegro). After the militaristic first movement and the profound serenity of the second, this rondo-finale, with its dance-like recurring theme, brings emotional relief with a mood of irrepressible joy.

— *Adapted from notes by Paul Schiavo © 2014  
and Yvonne Frindle*

**First performance:** November 28, 1811, Johann Schulz conducting the Leipzig Gewandhaus Orchestra, Friedrich Schneider as soloist

**First SLSO performance:** November 14, 1913, Max Zach conducting, Wilhelm Backhaus as soloist

**Most Recent SLSO performance:** March 28, 2026, Stéphane Denève conducting, Víkingur Ólafsson as soloist

**Instrumentation:** solo piano; 2 flutes, 2 oboes, 2 clarinets, 2 bassoons, 2 horns, 2 trumpets, timpani, strings

**Approximate duration:** 38 minutes

# PROFILES



## STÉPHANE DENÈVE

The Joseph and Emily Rauh  
Pulitzer Music Director

Known for his visionary storytelling and heartfelt interpretations, Stéphane Denève, The Joseph and Emily Rauh Pulitzer Music Director,

joined the St. Louis Symphony Orchestra in September 2018. Now in his eighth season as the 13th Music Director of the SLSO, Denève has shaped his tenure around creating extraordinary experiences that give an authentic voice to music. An expert with repertoire across genre and time, he has cultivated specific recognition for his interpretation of French, American, vocal, and operatic music. Through thoughtful and innovative programming, he maintains an enthusiasm for music and composers of today. A gifted communicator and educator, he is committed to inspiring the next generation of musicians and listeners as well as nurturing the SLSO's role as a creative leader for the St. Louis community and making orchestra music accessible to all.

Recognized internationally for the exceptional quality of his performances and programming, he regularly appears at major concert venues with the world's greatest orchestras and soloists. In addition to his role in St. Louis, he is the Artistic Director of the New World Symphony (Miami) and the Principal Guest Conductor of the Netherlands Radio Philharmonic. He has held leadership positions at the Brussels Philharmonic, the Philadelphia Orchestra, and the Royal Scottish National Orchestra. Denève is also a popular guest at many US summer music festivals and has won critical acclaim for his recordings of the works of Connesson, Debussy, Franck, Poulenc, Ravel, and Roussel.

Since his first visit to St. Louis in 2003, Denève has charmed audiences with his wit, warmth, and genuine passion for music and the St. Louis region. He is shaping the future of the SLSO through his appointments, including artistic leaders and one quarter of the orchestra to date. He has also advanced audience-building initiatives with new happy hour concerts and has made music more accessible to the community through cross-artistic collaborations with partnering St. Louis arts organizations.



## VÍKINGUR ÓLAFSSON

Piano

Víkingur Ólafsson is one of the most celebrated classical artists of our time; a unique and visionary musician who brings his profound originality to some of the greatest

works in music history. His recordings resonate deeply with audiences around the world, reaching over one billion streams and winning numerous awards, including the 2025 Grammy® Award for Best Classical Instrumental Solo for his album of Bach's *Goldberg Variations*, *BBC Music Magazine* Album of the Year, and twice receiving Opus Klassik's Solo Recording of the Year award.

Other notable honours include the Royal Philharmonic Society Gold Medal, Rolf Schock Music Prize, *Gramophone's* Artist of the Year, *Musical America's* Instrumentalist of the Year, the Nordic Council Music Prize, and the Order of the Falcon (the highest honor awarded by the Icelandic state), as well as the Icelandic Export Award, given by the President of Iceland.

Ólafsson released his latest album, *Opus 109*, in November 2025. Placing Ludwig van Beethoven's *Piano Sonata No. 30, Op. 109* at its heart, the album presents an illuminating and thrilling musical dialogue with Franz Schubert, J.S. Bach, and other works by Beethoven, and traces the lineages that converge on this masterpiece of the piano literature. He tours the anticipated new program widely, bringing it to the greatest concert halls across Europe and North America.

In 2025-2026, Ólafsson tours the US as featured artist with the Philharmonia Orchestra, as well as returning to the Berlin Philharmonic with Semyon Bychkov and the Czech Philharmonic with Sir Antonio Pappano. He also reunites with John Adams and the Los Angeles Philharmonic for performances of *After the Fall*, the piano concerto written expressly for him. Ólafsson also marks the György Kurtág centenary celebrations in 2026, and will appear at Müpa Budapest and as Artist in Residence at Cal Performances in Berkeley, California.

# ST. LOUIS SYMPHONY ORCHESTRA



Celebrated as one of today's most innovative, exciting, and enduring orchestras, the St. Louis Symphony Orchestra is the second-oldest orchestra in the country, marking its 146th year with the 2025-2026 season and its eighth with Stéphane Denève, The Joseph and Emily Rauh Pulitzer Music Director. The Grammy® Award-winning SLSO maintains its commitment to artistic excellence, educational impact, and community engagement—all in service to its mission of enriching lives through the power of music, fostering a vibrant and connected community.

The 2025-2026 season marks the reopening of the orchestra's historic home following a two-year transformational expansion and renovation designed by acclaimed architecture firm Snøhetta. The Jack C. Taylor Music Center, with a renovated Powell Hall at its heart, builds on the institution's momentum as a civic leader in convening individuals, creators, and ideas.

The core of the SLSO's artistic foundation is its dynamic partnership with Denève, whose energetic musicianship, visionary storytelling, and collaborative spirit have facilitated strong connections with local and visiting artists, as well as advanced the SLSO's role as a leader in music education. The SLSO musical family also includes the St. Louis Symphony Chorus, IN UNISON Chorus, and Youth Orchestra.

The SLSO enjoys a long history of robust and enduring collaborations with dozens of artists and organizations locally and around the world. In St. Louis, the orchestra fosters impactful artistic collaborations with partner institutions like The Sheldon, the Pulitzer Arts Foundation, and Opera Theatre of Saint Louis. Beyond the St. Louis region, the SLSO's impact is realized through concert broadcasts on St. Louis Public Radio and Classic 107.3, acclaimed recordings, regular touring activity, and a digital portfolio that includes robust education programs.

Since the arrival of Marie-Hélène Bernard as President and CEO in 2015, the SLSO has aligned its mission to make music more accessible, while fostering a culture welcoming to all.



**Scan for more information  
or visit [slo.org](https://slo.org).**



**STÉPHANE DENÈVE**

**Music Director**

*The Joseph and Emily Rauh Pulitzer Music Director*

**SAMUEL HOLLISTER**

**Assistant Conductor and The Fred M. Saigh Youth  
Orchestra Music Director**

**ERIN FREEMAN**

**Director of the St. Louis Symphony Chorus  
*AT&T Foundation Chair***

**KEVIN MCBETH**

**Director of the St. Louis Symphony IN UNISON®  
Chorus**

**LEONARD SLATKIN**

**Conductor Laureate**

**FIRST VIOLINS**  
.....

David Halen

Concertmaster

*Eloise and Oscar Johnson, Jr. Chair*

Erin Schreiber

Associate Concertmaster

*Louis D Beaumont Chair*

Celeste Golden Andrews

Second Associate Concertmaster

Hannah Ji

Assistant Concertmaster

*Justice Joseph H. and Maxine Goldenhersh Chair\**

Ann Fink

Jessica Cheng Hellwege

*Margaret B. Grigg Chair*

Emily Ho

Joo Kim

Miyu Kubo

Melody Lee

Yoojin Lee

Charlie Lin

Xiaoxiao Qiang

Angie Smart

*Mary and Oliver Langenberg Chair*

Dustin Wilkes-Kim\*\*

**SECOND VIOLINS**  
.....

Alison Harney

Principal

*Dr. Frederick Eno Woodruff Chair*

Kristin Ahlstrom

Associate Principal

*Virginia V. Weldon, M.D. Chair Mabel Dorn Reeder*

*Honorary Chair*

## ST. LOUIS SYMPHONY ORCHESTRA

---

Eva Kozma  
Assistant Principal  
Andrea Jarrett  
Nicolae Bica  
Janet Carpenter  
Jessie Chen  
Lisa Chong  
Asako Kuboki  
Seul Lee  
Nathan Lowry  
Shawn Weil  
Siyu Zhang

### VIOLAS

---

Beth Guterman Chu  
Principal  
*Ben H. and Katherine G. Wells Chair*  
Alejandro Valdepeñas  
Associate Principal  
Jonathan Chu\*\*\*  
Assistant Principal  
Michael Casimir  
Andrew François  
Susan Gordon  
Chris Tantillo  
Shannon Farrell Williams  
Xi Zhang  
Emilio Carlo\*\*  
Javier Otalora\*\*  
Davis Perez\*\*

### CELLOS

---

Daniel Lee  
Principal  
*Frank Y. and Katherine G. Gladney Chair*  
Melissa Brooks  
Associate Principal  
*Ruth and Bernard Fischlowitz Chair*  
David Kim  
Assistant Principal  
Elizabeth Chung  
James Czyzewski  
Jennifer Humphreys  
Alvin McCall  
Bjorn Ranheim  
Yin Xiong

### DOUBLE BASSES

---

*Underwritten in part by a generous gift from  
Dr. Jeanne and Rex Sinquefeld*  
Erik Harris  
Principal  
*Henry Loew Chair*  
Aleck Belcher  
Associate Principal  
Brendan Fitzgerald  
Assistant Principal  
David DeRiso  
Sarah Hogan Kaiser  
Ronald Moberly  
Teddy Gabrielides\*\*

**FLUTES**  
.....

Principal\*  
*Herbert C. and Estelle Claus Chair*  
Andrea Kaplan  
Associate Principal  
Jennifer Nitchman  
Ann Choomack

**PICCOLO**  
.....

Ann Choomack

**OBOES**  
.....

Jelena Dirks  
Principal  
*Morton D. May Chair*  
Philip Ross  
Associate Principal  
Xiomara Mass  
Cally Banham

**ENGLISH HORN**  
.....

Cally Banham

**CLARINETS**  
.....

Scott Andrews  
Principal  
*Walter Suskind Chair*  
Robert Walker  
Associate Principal  
*Wilfred and Ann Lee Konneker Chair*  
Tzuying Huang

**E-FLAT CLARINET**  
.....

Robert Walker

**BASS CLARINET**  
.....

Tzuying Huang

**BASSOONS**  
.....

Andrew Cuneo  
Principal  
*Molly Sverdrup Chair*  
Andrew Gott  
Associate Principal  
Julia Paine  
Ellen Connors

**CONTRABASSOON**  
.....

Ellen Connors

**HORNS**  
.....

Roger Kaza  
Principal  
*W.L. Hadley and Phoebe P. Griffin Chair*  
Thomas Jöstlein  
Associate Principal  
Blaine Dodson  
Tod Bowermaster  
Julie Thayer  
Victoria Knudtson\*\*\*  
Everett Burns\*\*

## ST. LOUIS SYMPHONY ORCHESTRA

---

### TRUMPETS

---

Steven Franklin

Principal

*Symphony Volunteer Association Chair*

Associate Principal\*

George Goad

Michael Walk

*David J. Hyslop Chair*

Raúl Orellana\*\*

### TROMBONES

---

Jonathan Randazzo

Principal

*Mr. and Mrs. William R. Orthwein, Jr. Chair*

Amanda Stewart

Associate Principal

Jonathan Reycraft

### BASS TROMBONE

---

Christopher Bassett

### TUBA

---

Principal\*

*Lesley A. Waldheim Chair*

### KEYBOARD

---

Peter Henderson

Principal

*Florence G. and Morton J. May Chair*

### TIMPANI

---

Shannon Wood

Principal

*Symphony Volunteer Association Chair*

Kevin Ritenauer

Associate Principal

*Paul A. and Ann S. Lux Chair*

### PERCUSSION

---

William James

Principal

*St. Louis Post-Dispatch Foundation Chair*

Alan Stewart

Associate Principal

*Alyn and Marlyn Essman Chair*

Kevin Ritenauer

### HARP

---

Principal\*

*Mallinckrodt Chair*

## **MUSIC LIBRARY**

---

Henry Skolnick  
Associate Librarian  
Amanda Tallant  
Assistant Librarian

## **STAGE MANAGERS**

---

Ron Bolte, Jr.  
Assistant Stage Manager (Sound)  
Nigel DeLuca  
Assistant Stage Manager (Lighting)  
Adam Sheppard, Stage Manager

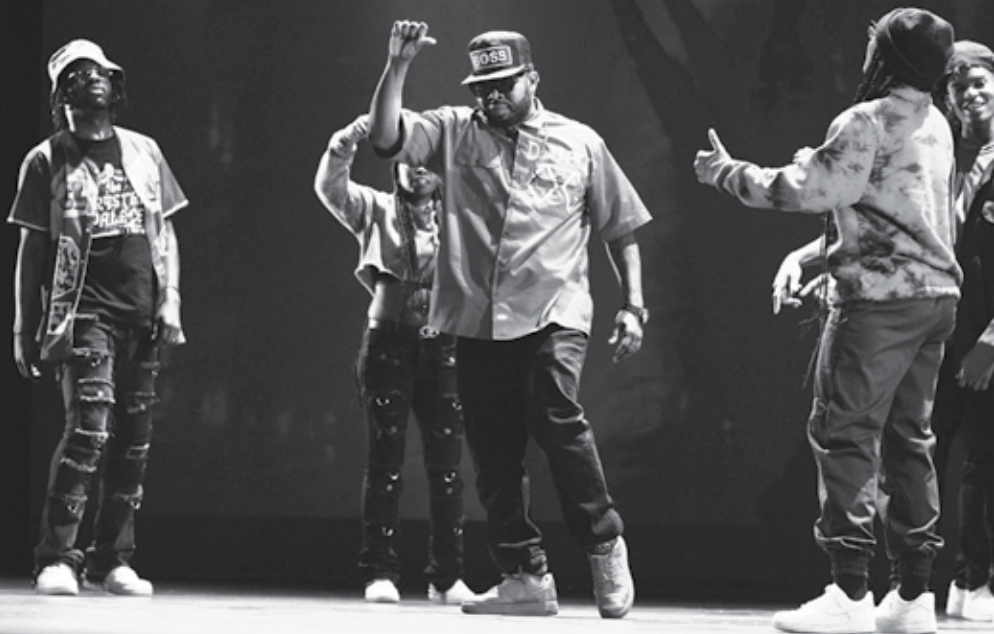
\*Chair vacant  
\*\*Replacement  
\*\*\*Leave of Absence



KRANNERT CENTER FOR THE PERFORMING ARTS

# 2025—26 SEASON

COME BE INSPIRED.



 krannert center

# LAND ACKNOWLEDGMENT

The University of Illinois System carries out its mission in its namesake state, which includes the traditional territory of the Peoria, Kaskaskia, Piankashaw, Wea, Miami, Mascoutin, Odawa, Sauk, Mesquaki, Kickapoo, Potawatomi, Ojibwe, Menominee, Ho-Chunk, and Chickasaw Nations. These lands continue to carry the stories of these Nations and their struggles for survival and identity.

As a Land-grant institution, the University of Illinois has a particular responsibility to acknowledge the peoples of these lands, as well as the histories of dispossession that have allowed for the growth of this institution. We are also obligated to reflect on and actively address these histories and the role that this university has played in shaping them. This acknowledgement and the centering of Native peoples is a start as we move forward.

Krannert Center affirms the commitment by the university to move beyond these statements, toward building deeper relationships and taking actions that uphold and preserve Indigenous rights and cultural equity.

As we gather to experience this performance, we have an opportunity to reflect on the ways that systems of oppression have shaped our society. We can work together to create systems that support human dignity, establish equity, strengthen cross-cultural relationships, and draw upon the creative capacity of all people that make up this community, state, nation, and world.



---

Experience the rejuvenating power  
of the performing arts.

---



Krannert Center is a place of renewal—a space where the performing arts bring fresh perspectives, new energy, and moments of individual and collective healing. Through music, movement, and storytelling, we rediscover hope, embrace transformation, and celebrate the endless possibilities of artistic expression.

The generosity of our donors and friends makes this renewal possible. Your support sustains the Center's commitment to enriching lives, fostering creativity, and ensuring that all who enter our doors can experience the rejuvenating power of the arts.

Please consider making a gift to Krannert Center today. Your contribution is essential in maintaining the high standards of excellence that define us while expanding the Center's enduring impact for seasons to come.



**MAKE YOUR GIFT TODAY**

[advancement@krannertcenter.illinois.edu](mailto:advancement@krannertcenter.illinois.edu)

217.333.6700

[KrannertCenter.com/Give](https://KrannertCenter.com/Give)



**COME BE CONNECTED.**



Bringing the community together



# KRANNERT SOCIETY

The University of Illinois, the College of Fine and Applied Arts, and Krannert Center are profoundly grateful for the commitment of Krannert Society members. Through a single donation, pledge, or estate gift of \$1 million or more, these open-hearted visionaries help build a thriving community and encourage cross-cultural understanding. Their support sustains the extraordinary vision of Herman and Ellnora Krannert to create a vibrant gathering place like no other.



**VALENTINE JOBST III**  
(1904-1993) March 1994



**CLAIR MAE ARENDS**  
(1912-2000)  
.....  
**G. WILLIAM ARENDS**  
(1914-1997) March 2000



**MARILYN PFLEDERER  
ZIMMERMAN**  
(1929-1995)  
.....  
**VERNON K. ZIMMERMAN**  
(1928-1996)  
November 2003



**HELEN FARMER**  
.....  
**JAMES FARMER**  
(1931-2020) April 2014



**ANONYMOUS**  
July 2025

# FOELLINGER SOCIETY

Members of the Foellinger Society show their enduring commitment to the arts through a single donation, pledge, or estate gift of \$500,000 to \$999,999. Because of their generosity, everyone in this community can unite in joyful and engaging experiences. These magnanimous arts lovers celebrate the spirit of Helene Foellinger, whose memorial gift honored her sister, Loretta Foellinger Teeple, and established the Marquee Performance Endowment.



**AVIS HILFINGER**  
(1915-2004)

**DEAN HILFINGER**  
(1912-2006) April 2000



**KENNETH ANDERSEN**  
(1933-2020)

**MARY ANDERSEN**  
August 2009



**CAROLYN G. BURRELL**  
April 2012



**CAROLE & JERRY RINGER**  
April 2014



**EDITH ANN STOTLER**  
(1946-2022)  
August 2017



**K. SARAH SPAULDING**  
(1930-2022)  
February 2017



**JANE BUFORD SCHERER  
& CHRIS SCHERER**  
June 2022



**DENA & JIM VERMETTE**  
June 2022



**HOWARD "CHIP" WALGREN  
DONALD LEE ALLEN**  
March 2024



**LEONARD (LEN) LEWICKI**  
August 2024

# IKENBERRY SOCIETY

University of Illinois President Emeritus and First Lady Stan and Judy Ikenberry have long demonstrated their love for the arts and their deep commitment to enhancing learning experiences for all University of Illinois students. Krannert Center gratefully acknowledges their steadfast support by recognizing donors who make a single donation, pledge, or estate gift in the amount of \$250,000 to \$499,999 as members of the Ikenberry Society.



**STANLEY IKENBERRY**  
(1935-2025)

**JUDITH IKENBERRY**  
September 2014



**DIRK MOL**  
(1946-2024)

**JERALD WRAY**  
March 2016



**DAVID A. KROOKS**  
August 2016



**HELEN RICHARDS**  
(1936-2023)

**DANIEL RICHARDS**  
June 2016



**HOLLY & KURT  
HIRCHERT**  
February 2017



**ANONYMOUS**  
May 2018



**JOAN & PETER HOOD**  
November 2018



**SUSAN & MICHAEL  
HANEY**  
April 2019



**JOHN & KAY SHANER**  
July 2019



**LYNN WEISEL WACHTEL  
& IRA WACHTEL**  
June 2019



**TIMOTHY TEMPLE  
& JERRY CARDEN**  
June 2022



**FRAN & MARC ANSEL**  
June 2022



**TRENT A. SHEPARD**  
September 2023



**DALE STEFFENSEN**  
(1922-2018)

.....  
**MARGARET  
STEFFENSEN**  
(1936-2024)  
August 2024



**JILL & JAMES  
QUISENBERRY**  
September 2025



**A. MARK NEUMAN**  
December 2025

# COLWELL SOCIETY

Dr. John B. Colwell, Pauline Groves Colwell, and R. Forrest Colwell provided critical funding for the Marquee Performance Endowment, and the Colwell Society gratefully acknowledges their invaluable assistance. Members of this society may make a single donation, pledge, or estate gift of \$100,000 to \$249,999 for celebrating, preserving, and exploring the arts right here and around the globe.



**DOLORIS DWYER**  
(1918-1997)  
April 1996



**EMILY GILLESPIE**  
(1909-2000)  
.....  
**JAMES GILLESPIE**  
(1905-1999)  
December 1996



**ROSANN NOEL**  
(1932-2018)  
.....  
**RICHARD NOEL**  
April 1997



**JAMES W. ARMSEY**  
(1917-2008)  
.....  
**BETH L. ARMSEY**  
(1918-2019)  
February 1998



**LOIS KENT**  
(1912-1999)  
.....  
**LOUIS KENT**  
(1914-1994)  
October 2000



**JUNE SEITZINGER**  
(1928-2020)  
.....  
**GROVER SEITZINGER**  
(1925-2019)  
September 2001



**RICHARD MERRITT**  
(1933-2005)  
.....  
**ANNA MERRITT**  
November 2006



**JOHN PFEFFER**  
(1935-2017)  
.....  
**ALICE PFEFFER**  
November 2006



**ANONYMOUS**  
November 2006



**LINDA M. MILLS**  
(1940-2006)  
October 2007



**JUDITH LIEBMAN**  
(1936-2023)

**JON LIEBMAN**  
January 2008



**MICHAEL CARRAGHER**  
(1946-2009)

September 2008



**VIRGINIA R. IVENS**  
(1922-2008)  
February 2009



**The Susan Sargeant  
McDonald Endowed  
Fund for Youth  
Programming**

Suzi was the founder/  
developer of the Krannert  
Center Youth Series  
July 2010



**MISAHO &  
RICHARD BERLIN**  
October 2010



**DIANA & WARD  
MCDONALD**  
March 2011



**GRACE & JOHN  
MICETICH**  
March 2011



**JO ANN TRISLER**  
(1946-2010)  
November 2011



**LEA GIESELMAN**  
(1932-2014)

**BOB GIESELMAN**  
(1932-2015)  
April 2013



**JULIE & NATHAN  
GUNN**  
April 2014



**MICHAEL SWINDLE**  
April 2014



**ANONYMOUS**  
November 2015



**LINDA WEINER**  
(1944-2021)  
.....  
**BARRY WEINER**  
February 2017



**ANNE MISCHAKOFF  
HEILES & WILLIAM  
HEILES**  
May 2017



**CECILE & IRA  
LEBENSTON**  
December 2017



**BURT SWANSON**  
(1939-2020)  
.....  
**IRIS SWANSON**  
December 2017



**TERRY & BARBARA  
ENGLAND**  
April 2018



**PHYLLIS ROBESON  
& FAMILY**  
February 2019  
.....  
**KYLE ROBESON**  
(1929-2021)



**JAMES R. FRAME  
& CANDACE PENN  
FRAME**  
April 2019



**MICHAEL &  
MARGARET ROSSO  
GROSSMAN**  
July 2019



**PATRICIA & ALLAN  
TUCHMAN**  
April 2021



**VICTOR FELDMAN**  
(1935-2018)  
.....

**JUDITH FELDMAN**  
(1938-2021)  
September 2021



**SUSAN & RICHARD  
SCHNUER**  
November 2021



**JUDITH & RICHARD  
KAPLAN**  
February 2022



**KATHRYN I. SEYBERT  
& MICHAEL J.  
ANDRECHAK**  
June 2022



**PATRICIA PLAUT &  
KENNETH SUSLICK**  
October 2022



**RICHARD & JAYNE  
BURKHARDT**  
January 2023



**SELMA K.  
RICHARDSON**  
(1931-2019)  
March 2023



**WILLIAM K. ARCHER**  
(1927-1997)  
.....

**FOROUGH ARCHER**  
July 2023



**KENNETH  
BENGOECHEA**  
(1937-2022)  
.....

**NANCY L. JOHNSON**  
September 2023



**MELANIE LOOTS &  
GEORGE GOLLIN**  
March 2025



**LOIS RESEK**  
October 2025  
.....

**ROBERT RESEK**  
(1935-2024)



**To explore how you can create your own lasting legacy, contact us at 217.333.6700 or [advancement@krannertcenter.illinois.edu](mailto:advancement@krannertcenter.illinois.edu).**

Gifts qualify for membership in a Society when made as a single donation, pledge, or estate gift designated to that Society.



**2025-26**  
A SEASON OF REMARKABLE  
PERFORMANCES



# 2025-2026 MARQUEE CORPORATE & COMMUNITY SPONSORS

Corporate and community support—both cash and in-kind—deepens Krannert Center’s capacity to inspire public discourse, communal respect, and collective joy. Please join Krannert Center in thanking the following corporate and community sponsors for their support of Krannert Center performances and initiatives.

## CORPORATE & COMMUNITY PLATINUM SPONSORS (\$30,000 OR MORE)

---



**SURFACE 51**

**CORPORATE & COMMUNITY LEAD GOLD SPONSORS (\$20,000-\$29,999)**



**CORPORATE & COMMUNITY GOLD SPONSORS (\$10,000-\$19,999)**



**Corporate & Community Silver Sponsors (\$5,000-\$9,999)**

Adams Outdoor Advertising  
Chambanamoms  
Champaign-Urbana Mass Transit District (MTD)

Kessler Optical  
Smile Politely  
WEFT 90.1 FM

**Corporate & Community Bronze Sponsors (\$2,500-\$4,999)**

BodyWork Associates  
Carter's Furniture  
Christie Clinic  
Comfort Suites  
Experience Champaign-Urbana

Illinois Soul  
Illini Studio  
Koester Law, PLLC  
The Piano Shop  
Triptych Brewing  
WEFT 90.1 FM  
Willard Airport

To join this powerful network of like-minded professionals while receiving guaranteed visibility and marketing benefits, visit [KrannertCenter.com/Give](http://KrannertCenter.com/Give) or contact [advancement@krannertcenter.illinois.edu](mailto:advancement@krannertcenter.illinois.edu) or 217.333.6700.

# 2025-2026 GRANTS



## **Doris Duke Charitable Foundation**

Endowment support from the Doris Duke Charitable Foundation continues to enhance Krannert Center's presentation of diverse, world-class national and international visiting artistry; supporting the creation of new work; and increasing engagement and collaboration across campus.



## **Illinois Arts Council**

The Illinois Arts Council Agency provides general programming support to ensure that audiences of all ages have direct access to world-class theatre, dance, and music.



## **The Augustine Foundation**

The Augustine Foundation provides continued major support for ELLNORA | The Guitar Festival.



## **Chamber Music America**

The Balourdet Quartet is the recipient of Chamber Music America's 2024 Cleveland Quartet Award. The quartet's performance has been made possible by the Cleveland Quartet Award Endowment Fund.



## **The Student Sustainability Committee**

The Student Sustainability Committee provided funding for the Krannert Center Audiences Lighting Retrofit Project, which continues to increase energy efficiency, decrease labor requirements, and improve safety conditions.



## **Center for Advanced Study**

George A. Miller Endowment Programs Committee  
The George A. Miller Endowment Programs Committee supports CultureTalk and other special collaborative projects.

# MARQUEE PATRON SPONSORS

Krannert Center is grateful for the passion and commitment of the following individuals whose gifts support the expansive range of experiences offered at Krannert Center: formative moments for tomorrow's global leaders, performances that comfort and transform, opportunities to create and enjoy groundbreaking work, engagement activities that offer self-discovery and hope, architectural treasures to delight the senses, and remarkable moments to foster lifelong memories. If you'd like to learn more about how to become a sponsor, please contact Krannert Center Advancement at 217.333.6700 or [advancement@krannertcenter.illinois.edu](mailto:advancement@krannertcenter.illinois.edu).

## **Season-Long Patron Sponsors** (\$25,000 or more per season)

A. Mark Neuman  
Anonymous  
Phyllis Robeson & Family  
Jo & Thomas Emerson

## **Endowed Underwriters** (\$10,000 or more per event)

Claire Mae & G. William Arends  
Avis & Dean Hilfinger  
Valentine Jobst III  
Trent Shepard  
Edith Ann Stotler  
Marilyn Pflederer Zimmerman & Vernon K. Zimmerman

## **Endowed Sponsors** (\$5,000-\$9,999 or more per event)

Beth L. & James W. Armsey  
Doloris Dwyer  
Terry & Barbara England  
Joan & Peter Hood  
Lois & Louis Kent  
Carole & Jerry Ringer  
Sarah K. Spaulding  
Bernard & Prudence Spodek Endowed Fund

## **Endowed Co-Sponsors** (\$2,500-\$4,999 or more per event)

Ann H. Bender Youth Series Endowment

Judith & Victor Feldman  
Lena & Bob Gieselman  
Emily & James Gillespie  
Margaret Rosso Grossman & Michael Grossman  
Susan & Michael Haney Fund for Young Audiences  
Virginia R. Ivens  
Kathryn & Stephen Marshak  
The Susan Sargeant McDonald Endowed Fund  
for Youth Programming  
Joanne & Charles McIntyre  
Anna Merritt  
Mildred Maddox Rose  
June & Grover Seitzinger  
Jo Ann Trisler  
Pat & Allan Tuchman

## **Patron Underwriters** (\$10,000 or more per event)

Jayne & Richard Burkhardt Jr.  
Carol & Willis Colburn  
Gözen & Chris Hartman  
Jill & James Quisenberry  
Trent Shepard  
Rebecca & Paul Wigley

## **Patron Sponsors** (\$5,000-\$9,999 or more per event)

Forough Archer  
Jayne & Richard Burkhardt Jr.  
Carolyn Burrell  
Jo & Thomas Emerson  
Emmie Fisher

Beverly & Michael Friese  
Britt East & Scott Van Gerpen  
Shirley Soo & Matthew Gorman  
Anne Mischakoff Heiles & William Heiles  
Don Krummel  
Leonard (Len) Lewicki  
Jon Liebman  
Kathryn Rybka & Darrell Hoemann Photography  
Dr. Jan Marie Aramini & Michael Pettersen  
Lois Resek  
Trent Shepard  
Patricia Plaut & Kenneth Suslick  
Iris Swanson  
Shirley & Arthur Traugott  
Pamela & Michael VanBlaricum

### **Patron Co-Sponsors**

(\$2,500-\$4,999 or more per event)

---

Walter Alspaugh  
Anonymous  
Frances & Marc Ansel  
Dianna Armstrong  
Sherry & Nelson Beck  
Carol & Carl Belber  
Carol Berthold  
Beth & David Chasco  
Marsha Clinard & Charles Boast  
Ann & Roy Campbell  
Harriet & Herschel Cline  
Susan & John Cobb  
Jongin Craggs  
Elizabeth Cardman & Paul Debevec  
Patricia & Jonathon Dessen and Emily & Ryan McKay  
Emmie Fisher  
Diane Gottheil  
Susan & Michael Haney  
Anne Mischakoff Heiles & William Heiles  
Peggy & Christopher Huson  
Judith & Richard Kaplan  
Josephine & Douglas Kibbee  
Lisa & Mark Klinger  
Janice Hiland & Stephen Kolderup  
Cecile & Ira Lebson  
Leonard (Len) Lewicki  
Gigi & Frank Miles

Martha & Thom Moore  
Ty & Deb Newell  
Jack Nibling  
Wilma & William O'Brien  
Claudia Reich & Gary Olsen  
Brenda & Stephen Pacey  
Jill & James Quisenberry  
Karen & Michael Retzer  
Anne Robin  
Julia & Gene Robinson  
Deborah & Stephen Rugg  
Anne & David Sharpe  
Diana Sheets  
Mary Schuler & Stephen Sligar  
Timothy Temple & Jerry Carden  
Masha & Brent Trenhaile  
Pat & Allan Tuchman  
Susan & Robert Welke  
Karen Wilkinson  
Jerald Wray

### **Krannert Center Youth Series Sponsors**

---

Ann H. Bender Youth Series Endowment  
Susan Sargeant McDonald Endowed Fund  
Illinois Arts Council  
National Endowment for the Arts  
Bernard & Prudence Spodek Endowed Fund  
Judith Bojar Kaplan  
Susan & Michael Haney  
Brenda & Stephen Pacey  
Jill & James Quisenberry  
Linda & Ronald Roaks  
Carol & Ed Scharlau  
Jane & Christian Scherer  
Anne & David Sharpe

### **Campaign for Young Audiences Sponsors**

---

Phyllis Robeson & Family  
Susan & Michael Haney Fund for Young Audiences  
Clarette & Zvi Ritz  
UpClose Marketing & Printing  
Gertrude Brokaw McCloy Endowment  
Bridget & Tom Lamont

Help ensure the impact of the arts for future generations by becoming a donor today.  
Visit [KrannertCenter.com/Give](http://KrannertCenter.com/Give), contact us at 217.333.6700 or [advancement@krannertcenter.illinois.edu](mailto:advancement@krannertcenter.illinois.edu).

# MARQUEE CIRCLE AND LOOP MEMBERS

Krannert Center is grateful for the passion and commitment of the following individuals whose gifts support the expansive range of experiences offered at Krannert Center: formative moments for tomorrow's global leaders, performances that comfort and transform, opportunities to create and enjoy groundbreaking work, engagement activities that offer self-discovery and hope, architectural treasures to delight the senses, and remarkable moments to foster lifelong memories. If you'd like to learn more about how to become a sponsor, please contact Krannert Center Advancement at 217.333.6700 or [advancement@krannertcenter.illinois.edu](mailto:advancement@krannertcenter.illinois.edu). **(CURRENT AS OF 2/1/2026)**



Melissa Huff & Richard Alkire\*  
Martin & Sharon Allen  
Walter Alspaugh  
Gene & Ellen Amberg  
Mary & Kenneth Andersen\*  
Ruth & James Anderson  
Sally W. Anderson  
Kathryn Seybert &  
Michael Andrechak  
Frances & Marc Ansel\*  
Dianna Armstrong\*  
Paula & Clifford Barnes  
Kathleen & S. Eugene Barton  
Tangül & Tamer Basar  
Jeannette & John Beck  
Sherry & Nelson Beck  
Carol & Carl Belber  
Erica & Alessandro Bellina  
Carol Berthold  
Doug Blair  
Marsha Clinard & Charles Boast  
Susan Brasmer & Tom McKinley  
Lois & Jack Brodsky by  
Daniel Brodsky  
Abbie & Mike Broga  
Channing Brown  
Elizabeth & Michael Brunk  
Joyce Burdge  
Jayne & Richard Burkhardt Jr.

Carolyn G. Burrell  
Ann & Roy Campbell  
Timothy Temple & Jerry Carden  
Nancy & Allen Carter  
Beth & David Chasco  
Kathleen & Felix Cimakasky  
Harriet & Herschel Cline  
Susan & John Cobb  
Carol & Willis Colburn  
Casey Sutherland & Linda Coleman  
Tina & John Colombo  
Jongin Craggs  
Deborah Day  
Judith & Jack DeAtley  
Elizabeth Cardman & Paul Debevec  
Nancy Dehmlow  
Richard DeLong  
Patricia & Jonathon Dessen  
Nancy & Harold Diamond  
Dixie Dickens\*  
Britt East & Scott Van Gerpen  
Cheryl & Robert Easter  
Anastasia Economy  
Ann Einhorn  
Lorene & Paul Ellinger  
Anne Ellison  
Jo & Thomas Emerson  
Terry & Barbara England  
Helen Farmer  
Sue Anne Fischer  
Emmie Fisher & Shung-Wu Lee  
Kristin & James Flores  
Jill & Rusty Freeland

Beverly & Michael Friese  
Rita Garman  
Laurie Rund & Rex Gaskins  
Shirley Soo & Matthew Gorman  
Diane Gottheil  
Margaret Rosso Grossman &  
Michael Grossman  
Julie & Nathan Gunn  
Barbara & Robin Hall  
Susan & Michael Haney\*  
Gözen & Chris Hartman\*  
Kathleen Harvey  
Clare & Alan Haussermann  
Jane Trishman Heaton  
Barbara & John Hecker\*  
Anne Mischakoff Heiles &  
William Heiles  
Marne Helgesen  
Jan & Bruce Hinely  
Holly & Kurt Hirschert  
Kathryn Rybka & Darrell  
Hoemann Photography  
Kathleen A. Holden  
Joan & Peter Hood\*  
Mary-Alayne & Robert Hughes  
Michael Huges & Dr. Marty Fung  
Peggy & Christopher Huson  
Judith Ikenberry\*  
Masumi Iriye & David O'Brien  
Laura & Gale Jamison  
Nancy Johnson  
Ronald Johnson  
Joan Volkmann & John Jones

## MARQUEE CIRCLE AND LOOP MEMBERS

---

Martha Ann Jones  
Linda & Charles Jordan  
Patricia Jurgens  
Patricia & Peter Kale  
Marianne Kalinke  
Judith & Richard Kaplan  
Paula Kaufman  
Charles J. and Joanne J. McIntyre  
by Family  
Therese & Lawrence Kessler  
Josephine & Douglas Kibbee  
Brenda Kimble  
Linda & R. Gear Kimmel  
Lisa & Mark Klinger\*  
Janice Hiland & Stephen Kolderup  
Sharon Pomerantz & Howard Korey  
Wynne Sandra Korr  
Sheila & Philip Krein  
Priscilla Kron & Gerald Frye  
Don Krummel  
Nancy Parker & James Kuklinski  
Bridget & Tom Lamont  
Cecile & Ira Levenson\*  
Brenda Lerner-Berg  
Diana Sheets  
Leonard (Len) Lewicki  
Jon Liebman  
Melanie Loots & George Gollin\*  
Brenda & Morgan Lyng  
Jean Manning & Alan Andreasen  
Marina & Nenad Marjanovic\*  
Kathryn & Stephen Marshak  
Marilyn Marshall  
Betsy Bachmann &  
Rebecca McBride  
Tracy McCabe & Fabien Wecker  
Susan & Brendan McGinty  
Anna Merritt\*  
Theresa & Bruce Michelson  
Gigi & Frank Miles  
Elizabeth & George Miley

Connie & Steve Miller  
Martha & Thom Moore\*  
Armine & Rudolf Mortimer  
Jane & Walter Myers  
Janet & Douglas Nelson\*  
Lubitsa Nenadov  
A. Mark Neuman  
Ty & Deb Newell  
Jack Nibling  
Richard Noel  
Jeanette Nugent  
Wilma & William O'Brien  
Claudia Reich & Gary Olsen\*  
Brenda & Stephen Pacey  
Jean Paley  
Donald Perrero  
Marjorie Perrino  
Dr. Jan Marie Aramini &  
Michael Pettersen  
Alice Pfeffer\*  
Jill & James Quisenberry\*  
Gloria Rainer  
Arlene & Julian Rappaport  
Cathy & Vicki Rath  
Susan & Sam Reese\*  
Lisa Courtney & Charles Reifsteck  
Lois Resek\*  
Karen & Michael Retzer  
Connie Rieken  
Marlyn Rinehart  
Carole & Jerry Ringer\*  
Clarette Ritz  
Linda & Ronald Roaks  
Phyllis Robeson  
Kim Robeson-Schwenk &  
Dean Schwenk\*  
Lisa & Eric Robeson  
Anne Robin  
Julia & Gene Robinson  
Taya & Mike Ross  
Christie Roszkowski

Deborah & Brian Ruddell  
Deborah & Stephen Rugg\*  
Jane & John Santogrossi  
Carol & Ed Scharlau\*  
Shawna Scherer & Steve Higgins  
Jane & Christian Scherer  
Susan & Richard Schnuer  
Kay & John Shaner  
Anne & David Sharpe  
Trent Shepard  
Janice Sherbert  
Jan & David Sholem  
Birute & Vaidotas Simaitis  
Patricia & Charles Simpson  
Mary Schuler & Stephen Sligar  
Audrey Ishii & Charles Smyth  
Prudence Spodek  
Beth Stafford  
Cecile Steinberg  
Margaret Stillwell  
Kathryn & Alan Stitt  
Patricia Plaut & Kenneth Suslick  
Iris Swanson  
Michelle & Jason Swearingen  
Bonnie & Bob Switzer  
Nancy & Edward Tepper  
Marie Griffith Tompkins  
Shirley & Arthur Traugott\*  
Carolyn Casady-Trimble &  
Ralph Trimble  
Devon Hague & Dallas Trinkle  
Anne & Richard Tryon\*  
Pat & Allan Tuchman\*  
Carl L. Vacketta  
Anne Silvis & Albert Valocchi  
Pamela & Michael VanBlaricum  
Dena & Jim Vermette  
Stella B. & C. Max Volk  
Lynn Weisel Wachtel & Ira Wachtel  
Donald Allen & Chip Walgren  
Paula Watson

---

\* Denotes former members of the Krannert Center Advancement Council.

## MARQUEE CIRCLE AND LOOP MEMBERS

---

Catherine Webber  
Barry Weiner  
Susan & Robert Welke  
Sarah Wigley  
Rebecca & Paul Wigley  
Karen Wilkinson  
Sarah & Charles Wisseman  
Jerald Wray  
Mary & Gene Wurth  
Margaret Yeh  
Elaine & Harold Yoon

### And gifts from seven Anonymous donors

### Marquee Circle Memorial Gifts

---

Michael Hughes & Dr. Marty Fung in  
memory of Gertrude B. McCloy  
Barbara & John Hecker in memory  
of Martha L. & Morris L. Hecker  
Anonymous in memory of  
Susan S. McDonald



Pat Januszki & Dick Adams  
Ghazala Ahmad\*  
Denee & Jeff Anderson  
Keith Appler & Lee Erwin  
Carol & Richard Arnould  
Susan & Telly Arvanitis  
Grace Ashenfelter  
Judith Bach  
Susan & G. Tim Bachman  
George Badger  
Nancy Barenberg  
Meredith & Joseph Barnes  
Sandra & Ritchie Barnett  
Daniel Barnett  
Maeline & Robert Barnstable  
Jane & Peter Barry  
Ronald & Susan J. Bates  
Starley Baxter  
Norma Bean  
Dorothy Bell  
Kathleen & John Lansingh Bennett\*  
Laura & Kenneth Berk  
Carol & Richard Betts  
Paul Blobaum & Dennis Azuma  
Mary Ann Boggs  
Zsolt Bognár  
Melissa & Charles Borden  
Tamara Bouseman  
Kathryn & Van Bowersox  
Vevi & Richard Brannon  
Hannah & Justin Brauer  
Amy Mueller & James Brennan  
Liora & Yoram Bresler  
Rosemary Buck

Ann Bullock  
Sheila Burdette  
Donald Busb  
Yvonne & Robert Cataneo  
Carol Celestine  
Elaine Bearden &  
Craig Chamberlain  
Alexander Chang  
Candice Chirgotis  
Joan Clement  
Maureen & Neal Cohen  
Kristin Patton & John Coleman  
Helen & Fred Coleman  
Eileen & Dennis Coleman  
Janet & William Coombe  
Nancy Coombs  
Marguerite Courtright  
Kathleen Vance & Charles Cowger  
Allan Crandell  
Shirley & David Crouse  
Brian Cudiamat  
Barbara Curtis  
Luis Cuza  
Elizabeth & Robert Czys  
Susan Meinkoth & Peter Davis\*  
Millie Davis  
Patricia & Robert Davis  
Judith Davis  
Janis Chadsey & Al Davis  
Paula & Daniel Deneen  
Linda Derum & Dan Peters  
Jo Ellen DeVilbiss  
Tom Dillavou  
Deborah & Joseph Dipietro  
Barbara & Thomas Dobner  
Terri Dodson  
Victoria Pifalo & Kieran Donaghy  
Jolene Drew  
Jean Driscoll  
Diane Durbin & David Tjaden  
Anita & Larry Dust

## MARQUEE CIRCLE AND LOOP MEMBERS

---

Sandra Ahten & Kevin Elliott  
Margaret Emkes  
Tara Toren-Rudisill & Dustin Erickson  
Breanne Ertmer  
Mary Ann Espeseth  
Shari Eubank  
Lea Mellom & Nicholas Faklis  
Eleanor & Walter Feinberg  
Songwei Feng  
Yoshiko & Darwin Fields  
Kim & Allan File  
Cara Finnegan & John Murphy  
Sandy & Joe Finnerty  
Rebecca Nettle-Fiol & Stephen Fiol  
Judith & Dale Flach  
Rose Marie & Brendan Foley  
Barbara Ford  
William Forsyth  
Shari & Ben Fox  
Kim & Peter Fox  
Carrie & Steven Franke  
Natalie Frankenberg  
Karen & Alain Fresco  
David Fuquay  
Margie Harris & Richard Furr  
Pamela & Samuel Furrer  
Jacob Gacek  
Janet Kalmar & Benjamin Galewsky  
Judith & Jay Geistlinger  
Karen & George Gibbs  
Amy Gilbertz  
Evelyn & Joseph Gill  
Victoria Christensen &  
Gary Gladding  
Alquin Gliane  
Maria Goncalo  
Jennifer Arp & Brian Gonner  
Nancy Goodall  
Nancy Gootrad  
Jeffrey Gordon  
Miranda Machula &  
Christopher Green

Karl Greve  
Megan & Ronald Guenther  
Kimiko Gunji  
Janet Elaine Guthrie & Mark Jaeger  
Laura & Robert Haber  
Pamela & James Hagle  
Elizabeth Scheid & Bruce Hajek  
Rosangela Silva & Ibrahim Hajj  
Karen Greenwalt & David Hamilton  
Lauri & Kevin Harden  
Sharon Harkness  
Karen & David Harris  
Cynthia Capek & Edward Harvey  
Robert Malik Winter by Sarah Hasib,  
Pete & Molly Yunyongying  
Amy Hassinger & Adam Davis  
Christine & Bruce Hegemann  
John Heiligenstein  
Susan Heiser  
Jannette & Donald Helfrich  
Mary Walker & Wendy Heller  
Patricia & Charles Helm  
Kathleen Henry  
Susan Herren  
Susan & Edwin Herricks  
Beverly Herzog  
Elizabeth & Andrew Hibel  
Herbert Hiestand  
Susan Hinrichs & Alan Carroll  
Jennifer & Paul Hixson  
Zarina & Hans Hock  
Andrea & Patrick Hoey  
Judith Hoffman  
Janice Bahr & Erwin Hoffman  
Michael Hogue  
Jean Holley  
Edit & Leland Holloway  
Jessie Houston  
Rhonda Fallon & Brant Houston  
Roxie Howard  
Patricia Hruby Powell  
Kimberly & Mark Hubbard

Gail Hug & Paul West  
Cheryl Hughes  
Barbara Hundley  
Rhonda Hunter  
Andrew Ingram  
Elizabeth & Henry Jackson  
Leah & Michael Jay  
Stephen Follis & Daniel Jensen  
Ruth & James Jesso  
Bruce Johnson  
David Johnson  
Heather Johnson  
Elizabeth Johnston  
Mary Ann & Jerry Jones  
Linda & Michael Jones  
Brenda Juhlin  
Elizabeth & Bob Kacich  
Alfred Kagan  
Kelly Saunders & Thomas Kamm  
Debra Karplus  
Laura & Don Keefe  
Patrick Keenan  
Beverly Kieffer  
Janice Kimpel  
Kathryn King\*  
Margaret Patten & Todd Kinney  
Gerri Kirchner  
Mary Klein  
Julia Kling  
Patricia & Frank Knowles  
Laura & Kipling Knox  
Christa Knust  
Marilyn Kohl  
Edward Kolodziej  
Joan Kozoll  
Marion & Herman Krier  
Curtis Krock  
David A. Krooks  
Mary & David Kuetemeyer  
Ann Benefiel-Kunkel &  
Joseph Kunkle  
Judith Kutzko

---

\* Denotes former members of the Krannert Center Advancement Council.

## MARQUEE CIRCLE AND LOOP MEMBERS

---

Keith Labeledz  
Michael Lambert &  
Timothy Hutchison  
Barbara Wilson & John Lammers  
Susan & Bruce Landreth  
Marie Mueller  
Annette & Charles Lansford  
Casandra & Kenneth Larvenz  
Linda Lebie  
Minjoo & Kathy Lee  
Cecilia & Robert Lentz  
Faye Lesht  
Janet & David Leslie  
Lil Levant  
Daniel Lewart  
Patricia Lewis  
Mary & Louis Liay  
Barbara & James Linder  
Larry Lister  
Cynthia & Michael Loui  
Margaret & Erick Loven  
Brandi & Jason Lowe  
Ann Lowry  
Robin Luebs  
Marguerite & Walter Maguire  
Jeanne Connell & Joseph Mahoney  
S. Pauline & Mankin Mak  
Jeannine Malmsbury  
Leslie Mason  
Jane & Michael McCulley  
Donna & Anthony McHugh  
Mari McKeeth & Heidi Weatherford  
Alina Reeves & Joseph Meier  
Carol Meitz  
Yonghwa & Daryl Meling  
Christen Mercier  
Susan Michaels  
Sharron & David Mies  
Fadi Mikhail  
Charlotte Mattax Moersch  
& William Moersch

Monahan Partners  
Linda & Mark Moore  
Liz & Dan Morrow  
Diane & Michael Murphy  
Jane & Alan Nathan  
Eve Harwood & Mark Netter  
Lynda Dautenhahn & Lee Nickelson  
Holly Nordheden  
Jenene & Richard Norton  
Julie O'Neill  
Valerie & Thomas Oakley  
Donna & Paul Offenbecher  
Mary & Robert Oliver  
Janice Olson  
Susan & Roger Orban  
David Ostrodka  
Martha Palit  
Tracy Parsons\*  
Michaela Passalacqua  
Sanjay Patel  
Vicki & Robert Patton  
Venetria Patton & DeCarlo Wilson  
Elizabeth Stern & Arne Pearlstein  
Aiko Perry  
Jean & G. David Peters  
Linda & Lyn Peterson  
Mary Phillips  
Adriane Powell  
Staci Provezis & James Smith  
Bruce Zimmerman &  
Maureen Reagan  
Margaret A. Reagan  
Julie & William Rettberg  
Felisa & Jay Reynolds  
Rob Rister  
Louise Rogers  
Kathleen Roush  
Katherine Ryan  
Lynn Ryle  
Lynne & Gregory Sancken

Charles J. & Joanne J. McIntyre  
by family  
Beverly Sanford  
Joan Farrell-Sargent &  
Michael Sargent  
Margaret & David Schiemann  
Susan K. & Paul K. Schlesinger  
Kathleen & Mark Schoeffmann  
Rachel Jensen-Schoeps &  
Karl Heinz Schoeps-Jensen  
Patricia Fowler & Jose Schutt-Aine  
Molly & John Scott  
Judy & John Sehy  
Rochelle Sennet  
Susan & Ronald Serfoss  
Mary Ruedinger &  
Thomas Shellander  
Lily Siu  
Elzbieta & Piotr Skorupa  
Elon Slaughter  
Donna Hacker Smith  
Deborah & James Smith  
Kathleen Smith  
Avigail & Marc Snir  
Melissa Breen & Cheryl Snyder  
Penelope & Anthony Soskin  
Deborah Stewart  
Susan Stock & Anthony Brienza  
Jane & Mark Sudderberg  
Sheila Sullivan  
Lila Sullivan & Don Gunning  
Tara & Jeff Swearingen  
Kathryn & Jonathan Sweedler  
Michele Thompson  
Joy Thornton-Walter  
Sharon & Ross Toedte  
Peter T. Tomaras  
Joan & Walter Tousey  
Masha & Brent Trenhaile  
Ariane Troschinetz  
Judy & Jeffrey Troxell

Evan Troyer  
Jonathan Trupin  
Grant Ullrich  
Candice & Frederick Underhill  
Kathryn & Alfonso Valdes  
Julie Mason-Vermeulen &  
Paul Henri Vermeulen  
Yvonne & Joseph Vitosky  
Judith & Richard Wagner  
June & Ashton Waller  
Charlotte & Jeffrey Wandell  
Diane & James Wardrop  
Becky Wauthier\* & Gary Spezia  
Ann & Ronald Webbink  
John Weber  
Carl Pius Weibel  
Cecelia & Morton Weir  
Elizabeth Weiss  
Michelle & Michael Wellens  
Janice & Gail Wernette  
Glennys Mensing & Roger West  
Deborah & Michael Westjohn  
Karen & John Whisler  
Donna & Thomas Williams  
Diane & Gary Winder  
Susan & Mark Wisthuff  
Ava & Richard Wolf  
Janie & Ehud Yairi  
Shawwna & David Yashar  
Rittchell & Peter Yau  
Patricia Johnson & Thomas Yaxley  
Ruth Yontz  
Sally & Stephen Zahos  
Yvonne & Gerard Ziegler  
Sharon Shavitt &  
Steven Zimmerman  
Karin & David Zink

**And gifts from four Anonymous donors**

**Student Loop**

Jonathan Allison  
Ana Downing & David Balut  
Kai Banning  
Rephayah Black  
Hsinju Chen  
Chieh-Li Chen  
Elena Dunn  
Lily Freebery  
Kelton German  
Joy Hsu  
Heesung Jung  
Hyeongkeun Kim  
Aydan Leffell  
Sinyee Lu  
Grace McMahon  
Matthew O'Brien  
Carly Stevenson  
Zhuoqi Tao  
Mika Vafaie-Janbahan  
Makenna West  
Irene Wilken  
Catherine Winter  
Yi Yang  
Joshua Yoon  
Hongrui Zhao

**And a gift from one Anonymous donor**

**Honorary Gifts to the Loop**

Cassie Liu in honor of Riccardo Muti  
Marie Mueller in honor of Marie  
Cassioppi  
Patricia Hruby Powell in honor of  
Morgan C. Powell  
Al Davis in honor of Janis Chadsey  
Jane & Walter Myers in honor of  
Cheryl A. Snyder

Deborah & James Smith in honor of  
Michael H. Leroy  
Barbara Danley & Robin Hall in  
honor of Michael D. Ross  
Nancy Kintzel in honor of Nathan  
Gunn  
Devon Hague & Dallas Trinkle in  
honor of Gail W. Hague  
Nancy & Kenneth Kirsch in honor of  
Mary A. Perlstein  
Nancy Gootrad in honor of Joan &  
Alex Mur  
Balázs, Zsolt, and Bálint Bognár in  
honor of Botond & Binky Bognár  
Cynthia Sherbert in honor of  
Retha J. Sherbert  
Judith Hoffman in honor of  
Douglas H. Hoffman

**Memorial Gifts to the Loop**

Margaret Bessette in memory of  
Stanley Ikenberry  
Jane & Mark Sudderberg in  
memory of Stanley Ikenberry  
Brenda & Jim Edgar in memory of  
Stanley Ikenberry  
The Portage Garden Club in  
memory of James J. Kraatz  
Patricia & Robert Davis in memory  
of Marilynne B. Davis  
Joyce Salisbury in memory of James  
J. Kraatz  
Arthur McNabb in memory of  
James J. Kraatz  
Lisa Kenz in memory of James J.  
Kraatz  
Torry & Michael Chafty in memory  
of James J. Kraatz  
Merri & Ryan Guggisberg in  
memory of James J. Kraatz

## MARQUEE CIRCLE AND LOOP MEMBERS

---

Elizabeth & Andrew Hibel in memory of Stanley O. Ikenberry  
Wendy Laws in memory of Stanley O. Ikenberry  
Mary Ann & Jerry Jones in memory of Stanley O. Ikenberry  
Lori & Donald Koontz in memory of Stanley O. Ikenberry  
Janine & Brian Jones in memory of Stanley O. Ikenberry  
Michele Thompson in memory of Stanley O. Ikenberry  
Mary Ruedinger & Thomas Shellander in memory of Stanley O. Ikenberry  
Kim & Peter Fox in memory of Stanley O. Ikenberry  
Margaret & David Schiemann in memory of Stanley O. Ikenberry  
Ariane Troshinetz in memory of Stanley O. Ikenberry  
Anita & Larry Dust in memory of Stanley O. Ikenberry  
Rockford Gastroenterology Associates in memory of Stanley O. Ikenberry  
Margaret & Scott Cline in memory of Stanley O. Ikenberry  
William Forsyth in memory of Stanley O. Ikenberry  
Barbara Hundley in memory of Stanley O. Ikenberry  
Judith & Richard Wagner in memory of Stanley O. Ikenberry  
Lorra & Lawrence Prabhakar in memory of Stanley O. Ikenberry  
Denee & Jeff Anderson in memory of Stanley O. Ikenberry  
Staci Provezis & James Smith in memory of Stanley O. Ikenberry  
Richard Noel in memory of Stanley O. Ikenberry

Lois Resek in memory of Stanley O. Ikenberry  
Iris Swanson in memory of Stanley O. Ikenberry  
Wayne Mosser in memory of Stanley O. Ikenberry  
Susan Michaels in memory of Stanley O. Ikenberry  
Stephen Wilson in memory of Stanley O. Ikenberry  
Anne & David Sharpe in memory of Dirk Mol  
Mary & Francis Brady in memory of David Prochaska  
Carol Diener in memory of David Prochaska  
Mary Gentry in memory of David Prochaska  
Barbara Kammer in memory of David Prochaska  
Debra & James Busey in memory of David Prochaska  
Penelope & Anthony Soskin in memory of David Prochaska  
Barbara Wilson & John Lammers in memory of David Prochaska  
Laurie & Arthur Kramer in memory of David Prochaska  
Annette & Charles Lansford in memory of David Prochaska  
Catherine Thurston in memory of David Prochaska  
Judith Iversen in memory of David Prochaska  
Emmie Fisher & Shung-Wu Lee in memory of David Prochaska  
Megan & Ronald Guenther in memory of David Prochaska  
Mary Klein in memory of Alvin G. Klein  
Martha & Rhanor Gillette in memory of Dorothy H. Ulbrick

Kathleen Roush in memory of Terry D. Roush  
Kira & Chad Swanson in memory of Joanne J. & Charles J. McIntyre  
Kristin Patton & John Coleman in memory of Patricia A. Coleman  
Helen Zhang & Tony Wong in memory of Jane M. Barrett  
Cecile Steinberg in memory of Dirk V. Mol  
Martha & Thom Moore in memory of Dirk V. Mol  
Deborah & James Smith in memory of Peter Feuille  
Peter Tomaras in memory of Ina Thomas  
Diana Sheets in memory of Dirk V. Mol  
Lesley Rubin in memory of Melvin Rubin  
Janet & Douglas Nelson in memory of Dirk V. Mol  
Camille & Robert Born in memory of William J. Wilkinson  
Paula & Kenneth Weissman in memory of William J. Wilkinson  
Linda Van Dyke in memory of William J. Wilkinson  
Brenda & Morgan Lyngge in memory of Robert W. Resek  
Donna & J. Fred Giertz in memory of Robert W. Resek  
Karen & David Hyman in memory of Stephen E. Levinson  
Faye Lesht in memory of Joyce D. Meyer  
Martha Green in memory of Robert W. Resek  
Audrey Wells & Jeff Zolitor in memory of Peter S. Kimble  
Maxine & David Kuehn in memory of Peter S. Kimble

## MARQUEE CIRCLE AND LOOP MEMBERS

---

Reeva & Daniel Kimble in memory  
of Peter S. Kimble  
Carol & Carl Belber in memory of  
Sandy I. Helman  
Rose & Daniel Sloven in memory of  
Sandy I. Helman  
Sandra Hamm in memory of Peter  
S. Kimble  
Bernadine & Charles Hines in  
memory of Atron Regen  
Jan Porterfield-Keenan in memory  
of Peter S. Kimble  
Elizabeth Simmons-O'Neill &  
John O'Neil in memory of Peter  
S. Kimble  
Nancy & Edward Tepper in memory  
of Sandy I. Helman  
Adriane Powell in memory of  
Morgan E. Powell  
Mary Walker & Wendy Heller in  
memory of Mark A. Heller  
Faye Lesht in memory of Joyce D.  
Meyer  
Jeffrey Gordon in memory of Joyce  
K. Gordon  
Michael Klein in memory of Joan R.  
Zernich  
Ann & Ronald Webbink in memory  
of Maxine G. Kaler  
Jane & Walter Myers in memory of  
Shozo Sato  
Peter T. Tomaras in memory of  
Ina Tomaras  
Karin & David Zink in memory of  
James J. Kraatz  
Vicki & Robert Patton in memory of  
Jean F. Patton  
Elizabeth Scheid & Bruce Hajek in  
memory of Bernardine Scheid  
Jennifer Sandefer in memory of  
Charles J. & Joanne J. McIntyre  
Elon Slaughter in memory of

Bessie Ziegler  
Stephen Follis & Daniel Jensen in  
memory of Jennifer Dillavou  
Martha & Rhanor Gillette in memory  
of Harriett E. Gillette  
Jannette & Donald Helfrich in  
memory of Annette H.  
Schoenberg

# KRANNERT CENTER VOLUNTEERS

## **Krannert Center Community Volunteers**

K. Rae Ambroz  
Rick Balsbaugh  
Jane Barry  
Ann Bergeron  
Deborah Bramowicz  
George Brock  
Jonne Brown  
Julian Carrero  
Felix Chan  
Molly Chartrand  
Yvonne Chen  
Kathy Cimasky  
Pamela De Ley  
Karen Decker  
Lori Deyoung  
Sun Dieker  
David Dorman  
Debra Eichelberger  
Roger Epperson  
Pat Fang  
Judy Federmeier  
Roger Fredenhagen  
Robin Goettel  
Barbara Gordon  
Gene Grass  
Katherine Hansen  
Sophia He  
Kathleen Henry  
Jill Hieronymus

Marcy Joncich  
Mary Ann Judd  
Carl Kagawa  
Bruce Kruger  
Rudy Leon  
Lynda Lopez  
Penny Lopez  
Pezz Lopez  
James McEnerney  
Linda Meachum  
Brenda Mehnert  
Kathleen Metcalf  
David Mies  
Sharron Mies  
Carol Miles  
Carol Miller  
Julie Mills  
Patrick Mills  
Frank Modica  
Heather Munro  
Christina Myers  
Marjorie Olson  
Natalia Ospina-  
Munoz  
Brenda Pacey  
Jane Pica  
Jerry Pica  
Renee Potter  
Rosa Pullen  
Carol Sato  
Barbara Schleicher  
Christel Seyfert  
Lei Shanbhag

Carrie Storrs  
Neil Sullivan  
Alice Taylor  
John Taylor  
Rodney Vanous  
Yuankun Wang  
Kelly Warner  
Jay Weber  
Jean Weigel  
Liesel Wildhagen  
Benjamin Williams  
Douglas Williams  
Julie Wirth  
Krystal Ye  
Hahwi Yoon  
Joseph Zumalt

## **Krannert Center Student Ambassadors**

Kaitlyn Adaya  
Fiyin Adekoya  
Saksham Aggarwal  
Emily Aldrich  
Smaya Anand  
Aditya Barman  
Zuzana Bielak  
Ann Biju  
Thomas Bobitz  
Zoe Bohannon  
Zach Bottoms  
Lexi Cao

Kayla Cash  
Xixi Chen  
Leon Chien  
Iyesha Childress  
Rachel Choi  
Leanna Cui  
Nooriyah Doriwala  
Nicole Dudek  
Joseph Edamala  
Nia Ellis  
Maricruz Figueroa  
Myra Gallant  
Andros Gao  
Shuoyuan Gao  
Jada Giddens  
Finn Gray  
Vedansh Gupta  
Jiho Han  
Grace He  
Atalhea Herman  
Kaye Hidalgo  
Yanshu Hou  
Justin Huff  
Hemanth Itte  
Uma Iyer  
Fasih Javed  
Hyorim Jin  
Yixuan Jin  
Jade Johnson  
Rachana Kanathur  
Asheera Kaul  
Sophie Kim  
Ellen King

Pallavi Kochar  
Kyle Krisdakumtorn  
Amelia Lamis  
Maddie Lawson  
Irie Lee  
Isabella Lee  
Julianna Lee  
Jungeun Lee  
Leo Lee  
Tristan Lee  
Zachary Lee  
Ava Lendman  
Tavisha Lijhara  
Hanning Lin  
Sara Lin  
Marlo Lindquist  
Chenzhi Liu  
Chunyu Lu  
Yamini Malli  
Julian Martinez  
Maddie McCammon  
Margaret Meagher  
Daniel Mend  
Zixiang Meng  
Audrey Miller  
Francis Moffatt  
Emily Murawski  
Samuel Naatz  
Ruka Nakatani  
Stuti Pai  
Dhairya Vibhav  
Parikh

Diana Patiño- Carreon	Lixin Wu Sissi Wu
Karol Penuelas	Lily Xie
Christopher Perez	Ziruo Yang
Niranjan Pillai	Qingping Ye
Adithya Raman	Haelly Young
Carolina Rosas	Qihao Zhan
Sukhbir Singh Saggi	Canwen Zhang
Ava Saldana	James Zhang
Eva Santoyo	Jie Zhang
Ellie Schmidgall	Qi Zhang
Santino Schrieber	William Zhang
Carissa Schultz	Xinyu Zhang
Megna Sivakumar	Yijia Zhang
Julia Stern	Jiesheng Zheng
Cliff Sun	Ryan Zhou
Aiki Suzuki	Yifna Zhu
Mann Talati	Margaret Zywicki
Greyson Talkington	
Thomas Valerius	
MacKenzie Van Ryne	
Alex Von Holten	
Connor Waddell	
Rebekah Wakayama	
Archie-Em Walker	
Tess Walker	
Jiaxin Wan	
Xile Wang	
Elodie Ward	
Ari Warner	
Jastina Washington	
Trey Weitner	

# KRANNERT CENTER STAFF

Mike Ross, Director  
Cheryl Snyder, Director of Advancement  
Terri Anne Ciofalo, Associate Director for Production  
Maureen V. Reagan, Associate Director for  
Administration and Patron Experience  
Lindsay Dalrymple, Assistant Director for Operations  
Julianne Ehre, Assistant Director for Programming  
and Engagement  
Craig Miles, Assistant Director for Marketing and  
Communications

## EVENTS

Andrew Almeter, Senior Production Coordinator  
for Events  
Bree Brock, Production Coordinator for Events  
Rebecca Russell, Assistant Technical Director for Events  
Rachel Gladd, Performing Arts Events Coordinator

## PROGRAMMING AND ENGAGEMENT

Julianne Ehre, Assistant Director for Programming  
and Engagement  
Jason Finkelman, Artistic Director of Global Arts  
Performance Initiatives  
Emily Laugesen, Director of Community Engagement  
Sam Smith, Director of Civic Engagement and Social  
Practice  
Nick Wurl, Engagement and Programming Coordinator

## ADVANCEMENT

Cheryl Snyder, Director of Advancement  
David Drake, Advancement Team Assistant

## OPERATIONS

Lindsay Dalrymple, Assistant Director for Operations

### Director's Office

Vanessa Lane, Office Manager  
Zia Moon, Krannert Center Showcase Director, Office  
and Communications Support Specialist

### Building Operations

John O. Williams, Facility Manager  
Tony Mapson, Assistant Facility Manager  
Joe Butsch, Building Electrician  
Steven Lessor, Assistant Chief Building Operations  
Engineer  
Scott Butler, Eric Carr, Emmett Catlin, Austin Dearth,  
Sara Dietrich, John Ekstrom, Jessica Fancher, Bryan  
Franzen, Salatheo Kindle, Jacob Lerch, Chabu Nsokoshi,  
Chad Schwenk, Robert Shaw, Attendants

## MARKETING AND COMMUNICATIONS

Craig Miles, Assistant Director for Marketing and  
Communications  
Sean Kutzko, Assistant Communication Director  
Nicholas Mulvaney, Art Director

## **ADMINISTRATION AND PATRON SERVICES**

---

Maureen V. Reagan, Associate Director for  
Administration and Patron and Patron Experience

### **Food Services**

Amy Thomas, Food Services Director  
Michael Bunting, Hospitality Supervisor  
Elizabeth Henke, Stage 5 Bar Manager  
John Ingalls, Intermezzo Kitchen Lead

### **Ticketing and Patron Services**

Whitney Havice, Ticketing and Patron Services Director  
Ann-Marie Dittmann, Patron Services Assistant Director  
Ty Mingo, Assistant Ticket Services Director  
Jon Proctor, Ticket Sales Supervisor  
Adrian Rochelle, Front of House Performance Supervisor

## **PRODUCTION**

---

Terri Anne Ciofalo, Director of Production  
Maria Miguens, Production Manager

### **Audio Department**

Rick Scholwin, Audio Director  
Alec LaBau, Associate Audio Director and Video Director  
Tyler Knowles, Assistant Audio Director, Live Stream  
Engineer

### **Costume Shop**

Andrea Bouck, Costume Director  
Richard Gregg, Costume Rentals Director and Associate  
Costume Shop Director  
Paige Stewart-Rankins, Hair and Makeup Supervisor  
Julianna Steitz, First Hand  
April McKinnis, EB McTigue, Cutters/Drapers

Kari Little-McKinney, Theatrical Stitcher  
Chantel Renee, Costume Crafts

### **Lighting Department**

Lisa Kidd, Lighting Director  
David Krupla, Associate Lighting Director  
Nicole Rataj, Assistant Lighting Director

### **Properties Department**

Adriane Binky Donley, Properties Director  
Kira Lyon, Assistant Properties Director

### **Scene Shop**

Ryan Schultz, Technical Director  
Tatsuya Ito, Associate Technical Director  
Bill Kephart, Office Administrator  
Bobby Reynolds, Theatrical Scene Shop Coordinator  
Anna Atkinson, Theatrical Scene Shop Assistant  
Rebecca Russell, Acting Crew Head  
Kayley Woolums, Theatrical Scene Shop Assistant

## **PERFORMING ARTS BUSINESS SERVICE CENTER**

---

Jenell Hardy, Director of Business Services  
Macauley Allen, Business Services Specialist  
Debbie Delaney, Accounting Staff  
Angela Wang, Business Services Specialist

# WE'RE SO GLAD YOU'RE AT THE CENTER

**We work to create the best possible setting for the experiences you seek and find here.**

## Necessaries

Restrooms are located in the foyers of Foellinger Great Hall, Tryon Festival Theatre, and Colwell Playhouse; the east entrances on the Lobby level; and in each elevator lobby on Level 1 and Level 3. Lobby restrooms and one restroom in each elevator lobby are fully accessible and contain baby-changing stations.

Ushers will be happy to provide you cough drops courtesy of St. Joseph Apothecary, or disposable foam earplugs if the place starts rockin'.

If you or a companion needs medical assistance, contact an usher or other staff member.

Please take a moment before the performance to note the theatre exits nearest to you. If it becomes necessary to evacuate the theatre, please remain calm, follow the instructions of the house staff, and exit in an orderly fashion to the appropriate safe meeting location which will be announced to you.

## Phones and Devices

The use of cell phones, cameras, and recording devices during performances is prohibited unless otherwise announced from the stage.

## Late Arrivals

As a courtesy to performers and audience members, latecomers will be seated only at times selected in advance by the artist. Should you find that you've arrived late to a performance, our Patron Services staff will keep you informed about the earliest seating opportunity.

## Lost Items

If you are in need of Lost and Found, please visit the Patron Services counter. We will do our best to reunite object and owner!

## Ticket Returns

If you find you can't attend a performance, please contact the Ticket Office in advance, preferably by 6pm the day before the performance (kran-tix@illinois.edu or 217.333.6280). We never charge a handling fee on ticket transactions.

## Accessibility

Krannert Center for the Performing Arts is committed to making experiences accessible for all patrons, and we are delighted to provide a number of services to assist you. Krannert Center is equipped with an assisted listening system, wheelchair-accessible and no-step/few-step seating, and large-print programs, Braille programs, and American Sign Language interpreters are available with three weeks' advance notice.

For assistance regarding your visit please contact patronservices@krannertcenter.illinois.edu or 217.333.9716 or visit go.KrannertCenter.com/Accessibility.

Para ayuda en relación con su visita, favor de enviar un email a:

Pour vous aider dans votre visite, prière de nous envoyer un courriel à:

欢迎! 如若您对您的造访需要帮助, 请发送电子邮件至:

स्वागत हे! अगर आपको अपने रहने के लिए मदद चाहिए, ईमेल कीजिए:

환영합니다! 방문에 관해 도움이 필요하실 때에는...  
에게 이메일로 문의하시기 바랍니다:

**PATRONSERVICES@KRANNERTCENTER.ILLINOIS.EDU**  
**217.333.9716**




# COME BE MOVED.

Art at Krannert Center isn't something you just watch—it's something you feel.

COME ON IN.  
WE'LL SAVE A SEAT FOR YOU.



 krannert center

FR APR 12 AT 7:30PM

**JOSHUA BELL, VIOLIN &  
LARISA MARTÍNEZ, SOPRANO  
'VOICE & THE VIOLIN'**

 krannert center