



## **QUANTUM VOYAGES**

Conceived and written by Smitha Vishveshwara and Latrelle Bright

Music by Stephen Taylor

Saturday, April 19, 2025, at 7:30pm

Colwell Playhouse

---

# PROGRAM

## QUANTUM VOYAGES

Conceived and written by Smitha Vishveshwara and Latrelle Bright

Music by Stephen Taylor

Krannert Center for the Performing Arts celebrates the UNESCO 2025 International Year of Quantum Science and Technology with a re-envisioned performance of *Quantum Voyages*, a performance piece conceived and written by University of Illinois faculty Smitha Vishveshwara (Physics) and Latrelle Bright (Theatre Studies), with music by Stephen Taylor (Composition-Theory). *Quantum Voyages* premiered in 2018 at the University of Illinois in celebration of Nobel Prize-winning physicist Anthony Leggett's 80th birthday.

Guided by Sapienza, the spirit of knowledge, two voyagers, Terra and Akash, enter the microscopic realm of atomic landscapes and quantum conundrums to discover a magnificent and baffling world foreign to everyday human experience. In moments of strife, quantum sages—real-life physicists—briefly appear to share their wisdom.

*This performance will be presented with no intermission.*

# QUANTUM VOYAGES PROGRAM ADDENDUM

Colwell Playhouse, Krannert Center for the Performing Arts  
April 19th, 2025

## Opening Reflections

### Quantum Voyages

Scene One: Photons

*Wide Awake – What does it mean to see?*

Scene Two: Quantum Conundrums and Superposition

*Here AND There – Get a Clue*

Scene Three: Ultracold Superfluids

*The State of Friendship*

Scene Four: Atomic Landscapes

*Frenemies*

Scene Five: Superconductivity

*Finding Harmony*

Scene Six: Exotic Phases of Matter

*Lose Yourself*

Scene Seven: MRI

*Probing the Brain*

## Talk Back

*Duration: 65 minutes; 5-minute break; 30-minute talk back.*

*Note: Quantum Sages Lance Cooper and Mari Cieszynski will join us for this performance in lieu of Quantum Sages David Campbell and Brian DeMarco.*

---

# CAST

## **SAPIENZA**

Aneta Lee

## **TERRA**

Charlotte Howard-Check

## **AKASH**

Aarya Mehta

## **QUANTUM ENSEMBLE**

Jon Faw

Jason Miles

Avi Pellegrinetti

Aubrey Pineda

Carissa Yau

## **SAGES**

Camille Bernal-Choban

David Campbell

Gina Lorenz

Philip Phillips

## **THE BAND**

### **Guitar/Spinductor**

Xavier Davenport

### **Electric Violin**

Na'ilah Ali

### **Keyboards/Computer**

Stephen Taylor

### **Percussion**

Jason Finkelman

### **Mixing Console/Electronics**

Jake Metz

---

# PRODUCTION TEAM

## **STAGING/CREATIVE DIRECTOR**

Latrelle Bright

## **SCIENCE/CREATIVE DIRECTOR**

Smitha Vishveshwara

## **COMPOSER/MUSIC DIRECTOR**

Stephen Andrew Taylor

## **STAGE MANAGER**

Gabriela Mendoza

## **MOVEMENT DIRECTOR**

Avi Pelligrenetti

## **MEDIA DESIGN**

Eme Ospina-Lopez

## **LIGHTING DESIGN**

Brant Murray

## **ASSISTANT DIRECTOR**

Jessica Page Faurie Elliott

## **CASCADE PROJECT MANAGER**

Rebecca Wiltfong

## **PRODUCTION MANAGER**

Maria Miguens

## **SOUND COORDINATOR**

Alec LeBau

## **COSTUME COORDINATOR**

Richard Gregg

## **SCENIC COORDINATOR**

Rebecca Russell

## **PROP COORDINATORS**

Adriane Binky Donley

Kira Lyon

## **PRODUCTION ASSISTANT**

Preethi Basani

# PROFILES



**Latrelle Bright** (Staging/Creative Director) is a director, performer, and arts advocate. Directing credits include: *Witch, Sweat, Cabaret, The Curious Incident of the Dog in the Nighttime*, and *No, Child* (Illinois Theatre); *Describe the Night, Men on Boats, Fun Home* (The Station Theatre); *Elephant's Graveyard* (Parkland College Theatre); *Top Dog/Underdog* (Hattiloo Theatre); *Otherwise Occupied, Lost Recipes* (Jump Start Performance Company). She has trained with Alternate Roots and Sojourn Summer Institute, both focused on devising techniques and ethics of creating work with and in communities, and Double Edge Theatre, focused on physical theatre practices and work creation. New works Latrelle has helped shepherd include: co-producer of *The Gun Play(s) Project* with Nicole Anderson-Cobb, PhD; *The Water Project*, devised with eight local community members, and *Journey to Water*, connecting African Americans with regional water sources, a collaboration with Prairie Rivers Network through a Catalyst Initiative Grant from the Center for Performance and Civic Practice; and *Stories in the Water*, exploring deeply rooted relationships black people have with our most precious resource, which premiered at Memphis Fringe. Recently she engaged in an interdisciplinary devised project about the quantum world with physics professor Smitha Vishveshwara, *Quantum Voyages*, that premiered on campus, traveled to Boston for the American Physical Society Conference, and was performed as a Zoom production (due to the pandemic) with students from the U of I and UC San Diego. She codirected *This Is the Ground* for Opera on Tap NYC with Jerre Dye at the Old Stone House in Park Slope,

Brooklyn. She is a recipient of the Allerton Artist-in-Residence program (with Nicole Anderson-Cobb). Other recent works include *The Joy of Regathering*, with Smitha Vishveshwara, Stephen Taylor (Music), and Jeff Moore (Beckman Institute), which premiered at Krannert Center in the fall of 2022; *If Sculptures Could Talk*, created for Meadowbrook Park; and *Unsettled* for Allerton Park and Retreat Center. Latrelle received her MFA in directing from the University of Memphis, was a TCG Young Leader of Color, and is an associate member of the Stage Directors and Choreographers Society. She is grateful for her artistic life and attributes all of the above to the love and encouragement of family, friends, and community.



**Stephen Andrew Taylor** (Composer/Music Director) composes music that explores boundaries between art and science. His first orchestra commission, *Unapproachable Light*, inspired by images from the Hubble Space Telescope and the New Testament, was premiered by the American Composers Orchestra in 1996 in Carnegie Hall. Other works include the quartet *Quark Shadows*, commissioned by the Chicago Symphony; and *Seven Memorials*, a 30-minute cycle for piano inspired by the work of Maya Lin, featured at Tanglewood in 2006 with pianist Gloria Cheng. *The Machine Awakes*, a CD of his orchestra, chamber and electronic music, was released in 2010; and *Paradises Lost*, an opera based on a novella by Ursula K. Le Guin, received its Canadian premiere in 2013, conducted by the composer. In 2015 *The New York Times* called his piano work *Variations Ascending*, premiered by

Ian Hobson, “persuasive and powerful.” He was a 2014–15 Fellow of the Guggenheim Foundation. Taylor is Professor of music at the University of Illinois Urbana-Champaign, where he lives with his spouse, artist Hua Nian. More information is at [stephenandrewtaylor.net](http://stephenandrewtaylor.net).



**Smitha Vishveshwara** (Science/Creative Director) is drawn to explorations of who we are, from the quantum grains that compose us to our human-ness to our place in the cosmos. She is a professor of physics at Illinois, a writer, a science-artist, and a mother. In her physics research, she studies the coldest

states of matter in the Universe, emergent behavior, out-of-equilibrium dynamics, and more. Her work forges connections with quantum information science, biophysics, cosmology, and space travel. She is on the global steering committee for the United Nations-proclaimed 2025 International Year of Quantum Science and Technology (IYQ) and is a Public Voices Fellow with the Op-Ed Project. She recently published a popular physics book with her late black hole-physicist father, *Two Revolutions: Einstein's Relativity and Quantum Physics; A Dialogue Between Father and Daughter*.

Smitha communally synergizes the sciences and the arts. She has co-founded an initiative on campus, CASCaDe (Collective for Art-Science, Creativity and Discovery, etc) with two fellow “Quantum Voyagers,” Latrelle Bright (performance director) and Stephen Taylor (music director). Her works created with artists, several in this current production, include the short film *Solaria*, the multimedia performance *The Joy of Regathering*, the circus performance *Cosmic Tumbles*, *Quantum Leaps*, and a four-voice arrangement of the South Indian spiritual “Raagi Thandheera” for the choir Amasong. She

marvels at how *Quantum Voyages* has grown and blossomed from 2018, when she and Latrelle conceived and scripted it, to its production last month at QuantumFest, a large-scale IYQ offering in Anaheim, California. She is very grateful and euphoric about the journey onto the Krannert Center stage with this incredible group of fellow Quantum Voyagers!



**Na'ilah Ali** (Electric Violin) is a professional violinist specializing in acoustic, baroque, and electric violin. She received her Master of Music degree in violin performance from the University of Illinois Urbana-Champaign. She received her bachelor's degree in violin

performance at the University of Wisconsin–Madison. Beginning with violin at age 8, she had an early interest in playing all kinds of music, which led her to learn flute, recorder, baroque violin, and electric violin. Throughout her career, she has performed at Walt Disney World Resort; Boston, Massachusetts; New Orleans, Louisiana; Anaheim, California; and even in Montreal, Canada. Na'ilah's favorite genres of music are metal, progressive rock and baroque classical music. Today, she enjoys composing music for electric string ensembles as well as singing. Her other hobbies include playing video games, painting, and napping.



**Camille Bernal-Choban** (Sage) is an aspiring condensed matter physicist who loves exploring—both in and out of the lab. When not running experiments, Camille finds creative ways to share science, whether through hiking adventures, kayak tours, crafting the natural world (galaxies, materials lattices) from

seaweed, or, in this case, theatre! They are thrilled to bring a touch of quantum clarity to the stage!



**David Campbell** (Sage) considers himself a quasi-interloper in this production, added by Smitha Vishveshwara as a “reward” (punishment ?) for being her colleague in the Division of Condensed Matter Physics of the American Physical Society. A former head

of the Physics Department at the University of Illinois Urbana-Champaign, he appeared previously as a Sage in a production of Quantum Voyages at a prior APS meeting. His only other acting claim to fame is when he dressed up as a punk rocker (chains , spiked hairdo and all) for the Physics Department Halloween Party and was not recognized by his then secretary. That performance was awarded with the golden corn cob, given in those days to the best costumed Halloween character. Known for his research in chaos, in this role as Sage David speaking about Schrödinger’s cat, he attempts to channel Jeff Goldblum as the chaologist in Jurassic Park.



**Xavier Davenport** (Guitar/ Spinductor) is a guitarist and composer who writes music that is meticulously structured, technologically experimental, humorous, theatrical, often improvisatory, and sometimes entertaining. Born in Ohio, he attended Wittenberg University where he obtained

degrees in Chinese language & culture, physics, and music. He next obtained a master’s degree in electrophysics from the National Chiao-Tung University in 2020, then another master’s in music composition in 2022 from DePaul University. Davenport is now working toward a

DMA at the University of Illinois at Urbana-Champaign, where his research is centered around applications of current and future quantum computers in music composition and audio signal processing. As a composer, Davenport has had works premiered by Ensemble 20+, Ensemble Dal Niente, Rage Thormbones, and more at events such as the TENOR conference, SEAMUS, and the NEMF festival. As a guitarist, he has premiered works by Patrick McGraw, Jinjue Wang, and Felipe Hoyos-González.



**Jon Faw** (Quantum Ensemble) (he/him/his) considers himself lucky to perform in another CASCaDe production. He has appeared in film, in bands, and on stage in over 100 productions across the Midwest. He graduated from the University of Illinois and is proud to work for his alma

mater in University Housing. In his free time, Jon enjoys traveling, gaming with friends, and relaxing with his cat, Tiger. He thanks his community for their continued support, especially Mom and Nanu.



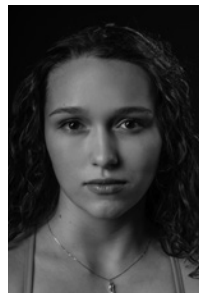
**Jason Finkelman** (Percussion) combines laptop electronics and acoustic instrumentation to create a distinct ambient, avant-world sound. A specialist on the single string musical bow berimbau, Finkelman’s roots in improvised music include founding the New York

City-based trio Straylight in 1992 and decades of performances with genre-blurring improvisers. As a composer for dance, Finkelman has collaborated with choreographer Cynthia Oliver



for over thirty years and received a Bessie Award as a composer for her full evening work *SHEMAD* (2000). His most recent commissioned dance score is *SHIFT* (2025), choreographed and performed by Renée Archibald and Mallory Rubin at Whitman College. Urbana-Champaign-based since 2000, Finkelman leads the ever-evolving ensemble Kuroshio which released its eponymous CD on Asian Improv Records (2020), and Improvisers Exchange, a performance ensemble of the School of Music at the University of Illinois. Finkelman was established as director of Global Arts Performance Initiatives at Krannert Center for the Performing Arts in 2012. @caxixikid jasonfinkelman.bandcamp.com (Photo by Travis Stansel)

performed in her first stage play—*Morningside*, written by Topher Payne. Since moving to Champaign, Aneta has performed in two plays at the Station Theatre —*Describe the Night* (as Mariya, understudy) and *POTUS: Or Behind Every Great Dumbass are Seven Women Trying to Keep Him Alive* (as Margaret).



### **Charlotte Howard-Check**

(Terra) (Terra) is a senior pursuing a BFA in acting with a minor in musical theatre. Some theatre credits include *Clouds Shaped Like Planos* (Masha), *Dracula*, a *Feminist Revenge Fantasy*, *Really* (Lucy Westenra), *I Wish* (Milky White), and *Urinetown* (Penelope

Pennywise). She has also been seen in Lyric Theatre's *Under the Stars* and *The Wild Party*. Charlotte would like to thank her family for their continued support. Three squeezes Viv!)



### **Aneta** (pronounced like Anita)

**Lee** (Sapienza) is new to community theatrical performances but not new to expressing herself before crowds. Her work at the University of Illinois Urbana-Champaign has her either speaking on panels, presenting

at conferences, or training in classroom settings. She hails from Metro Atlanta, Georgia, where she



**Gina Lorenz** (Sage) is a professor of physics at the University of Illinois Urbana-Champaign. She does experimental research in quantum optics and loves to share the fascinating ideas of quantum mechanics, including through her role in *Quantum Voyages* and in launching the

Public Quantum Network.



### **Aarya Mehta** (Akash) (he/him)

is a junior in physics at the University of Illinois Urbana-Champaign and is overall very happy to be here. Surrounded by incredibly talented virtuosos, he's grateful to have at least 21 years of experience in tomfoolery for this project. He dabbles in biophysics, writing novels, photography, and science outreach. Aarya is likely to be spotted giving tours of the campus observatory or skating down Green Street.



**Gabriela Mendoza** is a senior pursuing a stage management BFA with additional training in critical film production and social media. Her SM credits at the University of Illinois Urbana-Champaign include *Dracula*, *A Feminist Revenge Fantasy*, *Really*; *Trial by Jury*; *Senior Showcase*; *Studiosdance* and *LTI*,

Showcase with ASM credits including *RENT*, *Carnavall*, and *The Revolutionists*. In her time on campus she has worked at the Armory, stage managing *So You Think You Can Stay?* and *macbitches*. She spends a great deal of her time as the manager of the student concert committee Star Course bringing her favorite artists to campus. When not working, you can almost certainly find her at a concert! She is the host of her own music centered podcast called *All Gabs Pod* on all streaming platforms. She is so grateful for her time at the U of I and thanks her friends and family for their love and support.



**Jake Metz** (Mixing Console/ Electronics) is a sound engineer, musician, video artist, and multimedia technologist whose work explores the intersection of sound and visual art. As the Media Commons Technology Specialist at the University of Illinois since 2013, he has designed multimedia

studios and consulted on immersive technologies across campus. Outside the U of I, Jake runs a freelance production business and has developed a portfolio of spatial sound and video art installations. He has served as technical director for prominent technology art events such as Knobcon and VIDICON and founded the Immersion Festival, a showcase of multi-channel sound and immersive video environments. Most recently, Jake served as the primary design consultant for the audiovisual system at Gallery Art Bar in Urbana, Illinois. His work aims to challenge ordinary perceptions by blending surreal visuals and spatial audio, fostering curiosity and wonder. Through his installations and live performances, Jake continuously pushes the boundaries of immersive media to create magical, transformative experiences for his audience.



**Jason Miles** (Quantum Ensemble) is a senior pursuing a degree in mathematics. This is his first involvement with Illinois Theatre, but he has performed in student productions around campus and Triton College's production of *I and You*. Before coming to the U of I, Jason briefly attended the Milwaukee

Institute of Art and Design, where he studied new studio practices. Jason is passionate about the intersection of math and art, and when he is not on stage or in the classroom, he spends his time merging these areas of his life.



**Brant Murray** (Lighting Design) is a teaching associate professor and Chair of the Lighting Design & Technology program at the University of Illinois Urbana-Champaign. At the U of I, he is actively engaged in leadership and student wellness as a Faculty Fellow in the Illinois Leadership

Center and as a Level 1 Mental Health Ambassador. Brant is also certified in Adult Mental Health First Aid USA through the National Council for Mental Wellbeing. He has over 30 years of experience as a lighting designer, educator, production manager, and consultant. His design work spans almost every genre: theatre, dance, musicals, opera, concerts, live events, architectural, television, and fashion. Here at Krannert Center, Brant was the lighting designer for *Joy of Regathering*, a cross-disciplinary collaboration with the Beckman Institute, the Departments of Theatre, Chemistry, Dance, and Physics, and the School of Music.

Brant is the resident designer for Peridance Contemporary Dance Company (New York City)

under the direction of Igal Perry, the Resident Designer for Maria Caruso's Bodiography (Pittsburgh), a senior designer for C & C Lighting (Pittsburgh), and has been an associate artist with Ping Chong + Company (New York City) and a designer for IMCD Lighting (New York City). In addition to working across the nation from Vermont to Wyoming, international touring includes productions in Argentina, Bulgaria, England, Germany, Israel, Italy, and South Korea. Recent collaborations in the world of dance include Robert Battle, Jessica Lang, Ohad Naharin, Sidra Bell, Yue Yin, Buglisi Dance Theatre, and Martha Graham Dance Company.

Brant received his MFA in Lighting Design from the Carnegie Mellon School of Drama and his BS in Architecture (Drama Minor) from the University of Virginia School of Architecture. He is a member of USITT and United Scenic Artists Local USA 829, where he is a member of the National Lighting Design Committee.



**Eme Ospina-Lopez** (Media Design) (they/them) Born and raised in Bogotá, Colombia, Eme is a shapeshifting storyteller and activist, now growing and nurturing strong community roots in Chicago.

They are dedicated to stories that defy erasure,

engaging the truth within us that our priorities and responsibilities today must be in service to the making of liberated futures. Inshallah you will continue to find them doing work that shares a lifeblood of queer, trans, Black, brown, indigenous, migrant resistance.

Eme moves with the conviction that as collaborators, co-creators, conspirators of visions and of collective rituals, we are imbuing how deeply connected our struggles and freedoms

are to one another's, and illuminating how critically our dreams rely on learning to disarm what destroys us and rebuild together. They are grateful to be part of these voyages and share them with you.



**Avi Pellegrinetti** (Quantum Ensemble/Movement Director) (they/them) is a junior at the University of Illinois Urbana-Champaign working toward their BFA in dance with a minor in integrated biology. Avi grew up in Buffalo, New York and has danced there for 13 years.

During their time at Illinois, they

have performed in works by Alfonzo Cervera, Dr. Kemal Nance, Dr. Cynthia Oliver, Anna Peretz Rogovoy, Sojung Lim, Adanya Gilmore, and many undergraduate students, and studied at Turku University of Applied Sciences. They have also worked with the Crip\* initiative at the U of I and cofounded the RSO makesmewanna art collective. After graduating, they plan to pursue a career in dance and choreography. They would like to thank their family and friends for always cheering them on.



**Philip Phillips** (Sage) learned opera by listening to Peter Allen's NPR Saturday broadcasts of *Live at the MET*. What impressed him most about the first broadcast he heard, *Fidelio*, was that although he did not know

German and there were no visuals, the voices and the music sufficed to tell the story. He was hooked. It never occurred to him that he could ever sing, operatically or otherwise until he happened upon Cynthia Coleman's studio in 2015. He has also benefitted from other subsequent teachers, Rebecca Wilson, Kenneth

Overton (New York) and Michael Preacely (Kentucky). His competition results include: first in NATS auditions in 2020 and 2024, second in the American prize in Vocal Performance, Opera Division in 2022 and honorable mention in the Alexander Buono Vocal Competition, 2023. Opera credits include Commendatore (*Don Giovanni*) and Alcindoro (*La Bohème*) both in 2018 at the University of Illinois Lyric Opera, and Colline in *La Bohème* at the 2022 Bayview Music Festival in Petoskey Michigan.



**Aubrey Ann Pineda** (Quantum Ensemble) (she/her) is a freshman theatre major working toward her BFA in acting at the University of Illinois Urbana-Champaign. Aubrey Ann is originally from Hoffman Estates, Illinois and has been involved in theatre since 7th grade. *Quantum Voyages* is her

very first show in college, and she is over the moon excited to have had her first show be in Anaheim, California. Aubrey Ann is also a part of the Phillipine Student Association's PSA Harana at the U of I and on the board for the College of Fine and Applied Arts' James Scholar Program. When not performing onstage, she's listening to music; watching her favorite musicals, plays, and Disney movies; eating sweet treats; and writing short stories. Aubrey Ann would like to thank her friends and family for their never-ending support. She hopes you enjoy this Quantum Voyage!!



**Carissa Yau** (Quantum Ensemble) (they/them) is an actor and singer originally from Skokie, Illinois. They've lived in Champaign-Urbana full time since 2020 and received their BA in music from the University of Illinois Urbana-Champaign. They've been involved in several shows around Central

Illinois since 2021 (Station Theatre, CUTC, DLO, Illinois Theatre, Jaguar Players) and have been delighted to be a part of each one. When they're not in the theatre, they enjoy going to open mics and playing with their cats.

---

## **LAND ACKNOWLEDGMENT**

The University of Illinois System carries out its mission in its namesake state, which includes the traditional territory of the Peoria, Kaskaskia, Piankashaw, Wea, Miami, Mascoutin, Odawa, Sauk, Mesquaki, Kickapoo, Potawatomi, Ojibwe, Menominee, Ho-Chunk, and Chickasaw Nations. These lands continue to carry the stories of these Nations and their struggles for survival and identity.

As a land-grant institution, the University of Illinois has a particular responsibility to acknowledge the peoples of these lands, as well as the histories of dispossession that have allowed for the growth of this institution. We are also obligated to reflect on and actively address these histories and the role that this university has played in shaping them.

This acknowledgment and the centering of Native peoples is a start as we move forward.

Krannert Center affirms the commitment by the university to move beyond these statements, toward building deeper relationships and taking actions that uphold and preserve Indigenous rights and cultural equity.

As we gather to experience this performance, we have an opportunity to reflect on the ways that systems of oppression have shaped our society. We can work together to create systems that support human dignity, establish equity, strengthen cross-cultural relationships, and draw upon the creative capacity of all people that make up this community, state, nation, and world.



# INVEST IN THE FUTURE OF THE ARTS

Support Krannert Center today



---

## MAKING IT POSSIBLE

### ***Support Krannert Center Today***

#### **Where Creativity Ignites Passion**

Krannert Center is committed to providing an inclusive space where students, community members, visiting artists, and friends can gather for enriching performances and cultural experiences. The support of our donors and friends enables the Center to produce creative programming that ignites a passion for the arts that is invaluable.

**Together, we can ensure that students and the greater community continue to have access to transformative performing arts experiences.**

Please consider making a gift to Krannert Center today. With your help, we can sustain the high level of excellence you have come to expect, while strengthening the lasting impact of the Center's work.

You make it possible.

#### **Make Your Gift Today**

advancement@krannertcenter.illinois.edu • 217.333.6700

KrannertCenter.com/Give

#### **Would you like to make Krannert Center part of your legacy?**

Contact Cheryl Snyder (217.333.2533 | [casnyder@illinois.edu](mailto:casnyder@illinois.edu)) or Bethany Whoric (217.300.6042 | [bbwhoric@illinois.edu](mailto:bbwhoric@illinois.edu)) to learn more about making a planned gift to Krannert Center for the Performing Arts.

# KRANNERT CENTER PHILANTHROPY AND ADVOCACY

Krannert Center's dedication to the celebration, exploration, and cross-pollination of the arts is advanced through these special programs. Donors who champion such work make it possible for more people in our community to participate in life-affirming experiences.

## 2024-2025 ADVANCEMENT COUNCIL

This passionate group of arts advocates assists Krannert Center staff in expanding the Center's leadership and financial resources.

### Co-Chairs:

Michelle Gonzales &  
Shandra Summerville

Ghazala Ahmad

Jill Clements

Terry & Barbara England

Susan & Michael Haney

Lisa & Mark Klinger

Leonard (Len) Lewicki

Marina & Nenad

Marjanovic

Susan & Brendan

McGinty

Tracy Parsons

Susan & Sam Reese

Kathryn King, Sr. Lyric

Theatre @ Illinois

## 2024-2025 KRANNERT CENTER YOUTH SERIES

The Youth Series features daytime performances, online media created by performing artists, and educational activities designed especially for pre-K through high-school-aged students. Children who participate learn to appreciate the performing arts, gain knowledge, build social skills, and integrate live performance experiences into classroom work. Thank you to our Youth Series sponsors.

Ann H. Bender Youth  
Series Endowment

The Susan Sargeant  
McDonald Endowed  
Fund for Youth

Programming (Suzi  
was the founder/  
developer of the  
Krannert Center Youth  
Series)

Bernard and Prudence  
Spodek Endowed  
Fund

Illinois Arts Council  
National Endowment  
for the Arts

Judith Bojar  
Susan & Michael Haney  
Brenda & Stephen Pacey  
Jill & James Quisenberry  
Linda & Ronald Roaks  
Carol & Ed Scharlau  
Jane & Christian Scherer  
Anne & David Sharpe

## 2024-2025 CAMPAIGN FOR YOUNG AUDIENCES

Through the Campaign for Young Audiences, students at the U of I enjoy \$10 tickets for nearly every event presented at Krannert Center while other college students and children receive significant discounts.

### Campaign for Young Audiences Lead Sponsors



Phyllis Robeson & Family

### Campaign for Young Audiences Sponsors

Susan & Michael Haney  
Fund for Young  
Audiences

Clarette & Zvi Ritz  
UpClose Marketing  
and Printing

Gertrude Brokaw  
McCloy Endowment

## 2024-2025 SEASON-LONG SPONSOR



A. Mark Neuman

80 years ago, in 1945, members  
of the United States Armed  
Forces liberated my father, Rab-  
bi Isaac Neuman, from Ebensee,  
Austria.

If US soldiers had not been  
there, I would not be here.

**If you'd like to learn how you can become a sponsor, please contact Krannert Center Advancement at 217.333.6700 or [advancement@krannertcenter.illinois.edu](mailto:advancement@krannertcenter.illinois.edu).**



## KRANNERT SOCIETY

The University of Illinois, the College of Fine and Applied Arts, and Krannert Center are profoundly grateful for the commitment of Krannert Society members. Through donations, pledges, and residual gifts of \$1 million or more, these open-hearted visionaries help build a thriving community and encourage cross-cultural understanding. Their support sustains the extraordinary vision of Herman and Ellnora Krannert to create a vibrant gathering place like no other.



**VALENTINE JOBST III** (1904-1993)  
March 1994



**CLAIR MAE ARENDS** (1912-2000)  
**G. WILLIAM ARENDS** (1914-1997)  
March 2000



**MARILYN PFLEDERER ZIMMERMAN**  
(1929-1995)  
**VERNON K. ZIMMERMAN**  
(1928-1996)  
November 2003



**HELEN FARMER**  
**JAMES FARMER** (1931-2020)  
April 2014

## FOELLINGER SOCIETY

Demonstrating their steadfast dedication to the arts, members of the Foellinger Society have donated or pledged \$500,000 to \$999,999. Because of their generosity, everyone in this community can unite in joyful and engaging experiences. These magnanimous arts lovers celebrate the spirit of Helene Foellinger, whose memorial gift honored her sister, Loretta Foellinger Teeple, and established the Marquee Performance Endowment.



**AVIS HILFINGER** (1915-2004)  
**DEAN HILFINGER** (1912-2006)  
April 2000



**KENNETH ANDERSEN** (1933-  
2020)  
**MARY ANDERSEN**  
August 2009



**CAROLYN G. BURRELL**  
April 2012



**CAROLE & JERRY RINGER**  
April 2014



**EDITH ANN STOTLER**  
(1946-2022)  
August 2017



**K. SARAH SPAULDING**  
(1930-2022)  
February 2017



**JANE BUFORD SCHERER & CHRIS  
SCHERER**  
June 2022



**DENA & JIM VERMETTE**  
June 2022



**HOWARD "CHIP" WALGREN  
DONALD LEE ALLEN**  
March 2024



**LEONARD (LEN) LEWICKI**  
August 2024

**IKENBERRY SOCIETY**

University of Illinois President Emeritus and First Lady Stan and Judy Ikenberry have long demonstrated their love for the arts and their deep commitment to enhancing learning experiences for all University of Illinois students. Krannert Center gratefully acknowledges their steadfast support by introducing the Ikenberry Society to recognize donated gifts or pledges of \$250,000 to \$499,999.



**JUDITH & STANLEY IKENBERRY**  
September 2014



**JERALD WRAY & DIRK MOL**  
March 2016



**DAVID A. KROOKS**  
August 2016



**HELEN RICHARDS**  
(1936-2023)  
**DANIEL RICHARDS**  
June 2016



**HOLLY & KURT HIRCHERT**  
February 2017



**ANONYMOUS**  
May 2018



**JOAN & PETER HOOD**  
November 2018



**SUSAN & MICHAEL HANEY**  
April 2019



**LYNN WEISEL WACHTEL  
& IRA WACHTEL**  
June 2019



**JOHN & KAY SHANER**  
July 2019



**TIMOTHY TEMPLE & JERRY  
CARDEN**  
June 2022



**FRAN & MARC ANSEL**  
June 2022



**TRENT A. SHEPARD**  
September 2023



**DALE STEFFENSEN**  
(1922-2018)  
**MARGARET  
STEFFENSEN**  
(1936-2024)  
August 2024

## COLWELL SOCIETY

Dr. John B. Colwell, Pauline Groves Colwell, and R. Forrest Colwell provided critical funding for the Marquee Performance Endowment, and the Colwell Society gratefully acknowledges their invaluable assistance. Members have donated or pledged \$100,000 to \$249,999 for celebrating, preserving, and exploring the arts right here and around the globe.



**DOLORIS DWYER**  
(1918-1997)  
April 1996



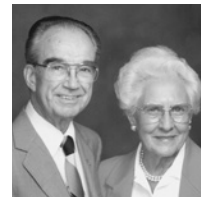
**EMILY GILLESPIE**  
(1909-2000)  
**JAMES GILLESPIE**  
(1905-1999)  
December 1996



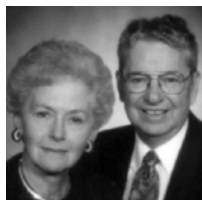
**ROSANN NOEL**  
(1932-2018)  
**RICHARD NOEL**  
April 1997



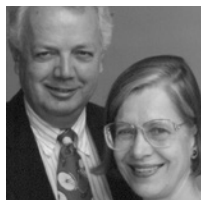
**JAMES W. ARMSEY**  
(1917-2008)  
**BETH L. ARMSEY**  
(1918-2019)  
February 1998



**LOIS KENT**  
(1912-1999)  
**LOUIS KENT**  
(1914-1994)  
October 2000



**JUNE SEITZINGER**  
(1928-2020)  
**GROVER SEITZINGER**  
(1925-2019)  
September 2001



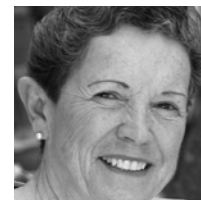
**RICHARD MERRITT**  
(1933-2005)  
**ANNA MERRITT**  
November 2006



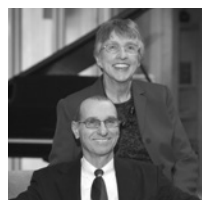
**JOHN PFEFFER**  
(1935-2017)  
**ALICE PFEFFER**  
November 2006



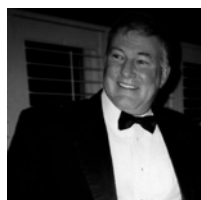
**ANONYMOUS**  
November 2006



**LINDA M. MILLS**  
(1940-2006)  
October 2007



**JUDITH LIEBMAN**  
(1936-2023)  
**JON LIEBMAN**  
January 2008



**MICHAEL CARRAGHER**  
(1946-2009)  
September 2008

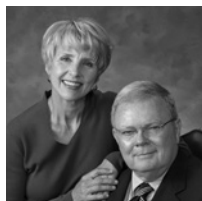


**VIRGINIA R. IVENS**  
(1922-2008)  
February 2009

**THE SUSAN SARGEANT MCDONALD ENDOWED FUND FOR YOUTH PROGRAMMING**  
Suzi was the founder/developer of the Krannert Center Youth Series  
July 2010



**MISAHO & RICHARD BERLIN**  
October 2010



**DIANA & WARD  
MCDONALD**  
March 2011



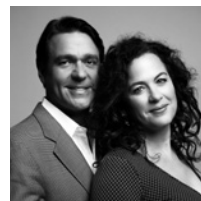
**GRACE & JOHN  
MICETICH**  
March 2011



**JO ANN TRISLER**  
(1946-2010)  
November 2011



**LEA GIESELMAN**  
(1932-2014)  
**BOB GIESELMAN**  
(1932-2015)  
April 2013



**JULIE & NATHAN  
GUNN**  
April 2014



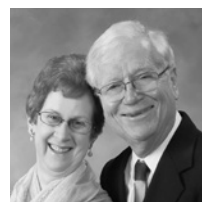
**MICHAEL SWINDLE**  
April 2014



**ANONYMOUS**  
November 2015



**LINDA WEINER**  
(1944-2021)  
**BARRY WEINER**  
February 2017



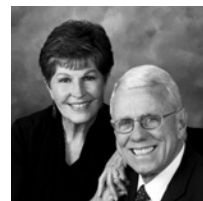
**ANNE MISCHAKOFF  
HEILES & WILLIAM  
HEILES**  
May 2017



**JILL & JAMES  
QUISENBERRY**  
May 2017



**CECILE & IRA  
LEBSON**  
December 2017



**BURT SWANSON**  
(1939-2020)  
**IRIS SWANSON**  
December 2017



**TERRY & BARBARA  
ENGLAND**  
April 2018

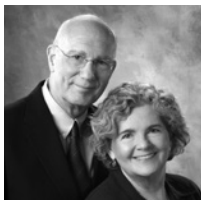


**PHYLLIS ROBESON  
& FAMILY**  
February 2019  
**KYLE ROBESON**  
(1929-2021)



**JAMES R. FRAME  
& CANDACE PENN  
FRAME**  
April 2019





**MICHAEL &  
MARGARET ROSSO  
GROSSMAN**

July 2019



**PATRICIA & ALLAN  
TUCHMAN**

April 2021



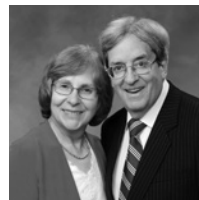
**VICTOR FELDMAN  
(1935-2018)  
JUDITH FELDMAN  
(1938-2021)**

September 2021



**SUSAN & RICHARD  
SCHNUER**

November 2021



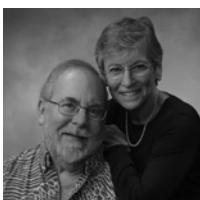
**JUDITH & RICHARD  
KAPLAN**

February 2022



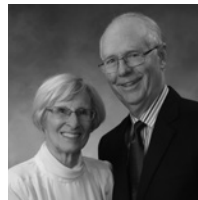
**KATHRYN I. SEYBERT  
& MICHAEL J.  
ANDRECHAK**

June 2022



**PATRICIA PLAUT &  
KENNETH SUSLICK**

October 2022



**RICHARD & JAYNE  
BURKHARDT**

January 2023



**SELMA K. RICHARDSON  
(1931-2019)**

March 2023



**WILLIAM K. ARCHER  
(1927-1997)  
FOROUGH ARCHER**

July 2023



**KENNETH BENGOCHEA  
(1937-2022)**

**NANCY L. JOHNSON**

September 2023



**MELANIE LOOTS &  
GEORGE GOLLIN**

March 2025

---

*Donations by society members include estate gifts; outright donations; charitable gift annuities; charitable remainder trusts; gifts of real estate, insurance, and securities; and pledges fulfilled over a period of five years. To explore how you can create your own lasting legacy, contact us at 217.333.6700 or [advancement@krannertcenter.illinois.edu](mailto:advancement@krannertcenter.illinois.edu).*



**2024-2025 MARQUEE CORPORATE & COMMUNITY SPONSORS**

Corporate and community support—both cash and in-kind—deepens Krannert Center’s capacity to inspire public discourse, communal respect, and collective joy. Please join Krannert Center in thanking the following corporate and community sponsors for their support of Krannert Center performances and initiatives.

---

**Corporate & Community Platinum Sponsors**  
(\$30,000 OR MORE)



**Corporate & Community Lead Gold Sponsors**  
(\$20,000-\$29,999)



**Corporate & Community Gold Sponsors**  
(\$10,000-\$19,999)



**Corporate & Community Silver Sponsors**  
(\$5,000-\$9,999)

Adams Outdoor  
Advertising  
Chambanamoms  
Champaign-Urbana Mass  
Transit District (MTD)

Christie Clinic  
Kessler Optical  
Smile Politely

**Corporate & Community Bronze Sponsors**  
(\$2,500-\$4,999)

BodyWork Associates  
Carter's Furniture  
Comfort Suites  
Experience Champaign-  
Urbana

Glenn Poor's Audio & Video  
Illini Studio  
The Piano Shop  
WEFT 90.1 FM  
Willard Airport

**TO JOIN THIS POWERFUL NETWORK** of like-minded professionals while receiving guaranteed visibility and marketing benefits, visit [KrannertCenter.com/Give](http://KrannertCenter.com/Give) or contact Bethany Whoric at 217.300.6042 or [bbwhoric@illinois.edu](mailto:bbwhoric@illinois.edu).

---

# 2024-2025 GRANTS



DORIS DUKE  
CHARITABLE FOUNDATION

## DORIS DUKE CHARITABLE FOUNDATION

Endowment support from the Doris Duke Charitable Foundation continues to enhance Krannert Center's presentation of diverse, world-class national and international visiting artistry; supporting the creation of new work; and increasing engagement and collaboration across campus.



## ILLINOIS ARTS COUNCIL

The Illinois Arts Council Agency provides general programming support to ensure that audiences of all ages have direct access to world-class theatre, dance, and music.

## THE AUGUSTINE FOUNDATION

### THE AUGUSTINE FOUNDATION

The Augustine Foundation provides continued major support for ELLNORA | The Guitar Festival.



THIS PROJECT FUNDED BY  
STUDENT SUSTAINABILITY COMMITTEE

## THE STUDENT SUSTAINABILITY COMMITTEE

The Student Sustainability Committee provided funding for the Krannert Center Audiences Lighting Retrofit Project, which continues to increase energy efficiency, decrease labor requirements, and improve safety conditions.



## GEORGE A. MILLER ENDOWMENT PROGRAMS COMMITTEE

The George A. Miller Endowment Programs Committee supports CultureTalk and other special collaborative projects.

## MARQUEE PATRON SPONSORS

Krannert Center is grateful for the passion and commitment of the following individuals whose gifts support the expansive range of experiences offered at Krannert Center: formative moments for tomorrow's global leaders, performances that comfort and transform, opportunities to create and enjoy groundbreaking work, engagement activities that offer self-discovery and hope, architectural treasures to delight the senses, and remarkable moments to foster lifelong memories. If you'd like to learn more about how to become a sponsor, please contact Krannert Center Advancement at 217.333.6700 or [advancement@krannertcenter.illinois.edu](mailto:advancement@krannertcenter.illinois.edu).

### Season-Long Patron Sponsor

(\$25,000 OR MORE PER SEASON)

A. Mark Neuman  
Anonymous

### Endowed Underwriters

(\$10,000 OR MORE PER EVENT)

Clair Mae & G. William  
Arends  
Avis & Dean Hilfinger  
Valentine Jobst III  
Edith Ann Stotler  
Marilyn Pflederer & Vernon  
K. Zimmerman

### Endowed Sponsors

(\$5,000-\$9,999 PER EVENT)

Beth & James Armsey  
Doloris Dwyer  
Terry & Barbara England  
Joan & Peter Hood  
Lois & Louis Kent  
Carole & Jerry Ringer  
Trent A. Shepard  
Sarah K. Spaulding  
Bernard and Prudence  
Spodek Endowed Fund

### Endowed Co-sponsors

(\$2,500-\$4,999 PER EVENT)

Ann H. Bender Youth Series  
Endowment  
Victor & Judith Feldman  
Lena & Bob Gieselman  
Emily & James Gillespie  
Margaret Rosso Grossman  
& Michael Grossman  
Susan & Michael Haney  
The Susan & Michael  
Haney Fund for Young  
Audiences

Virginia R. Ivens  
Kathryn & Stephen  
Marshak  
The Susan Sargeant  
McDonald Endowed  
Fund for Youth  
Programming (Suzi was  
the founder/developer  
of the Krannert Center  
Youth Series)  
Joanne & Charles McIntyre  
Anna Merritt  
Mildred Maddox Rose  
June & Grover Seitzinger  
Jo Ann Trisler  
Pat & Allan Tuchman

### Patron Underwriters

(\$10,000 OR MORE PER EVENT)

Jayne & Richard Burkhardt  
Jr.  
Carol & Willis Colburn

### Patron Sponsors

(\$5,000-\$9,999 PER EVENT)

Anonymous  
Channing Brown  
Jayne & Richard Burkhardt  
Jr.  
Dixie & Evan Dickens  
Anastasia Economy  
Shirley Soo & Matthew  
Gorman  
Anne Mischakoff Heiles &  
William Heiles  
Marilyn & Don Krummel  
Cecile & Ira Levenson  
Jon Lieberman  
Carole & Jerry Ringer  
Carol & Ed Scharlau  
Patricia Plaut & Kenneth  
Suslick

Iris Swanson  
Shirley & Arthur Traugott  
Pamela & Michael  
VanBlaricum  
Barry Weiner  
Susan & Robert Welke  
Karen & William Wilkinson

### Patron Co-sponsors

(\$2,500-\$4,999 PER EVENT)

Ghazala Ahmad  
Anonymous  
Frances & Marc Ansel  
Dianna Armstrong  
Sherry & Nelson Beck  
Carol Berthold  
Marsha Clinard & Charles  
Boast  
Carolyn Burrell  
Ann & Roy Campbell  
Timothy Temple & Jerry  
Carden  
Beth & David Chasco  
Harriet & Herschel Cline  
Jongin Craggs  
Emmie Fisher  
Melanie Loots & George  
Gollin  
Shirley Soo & Matthew  
Gorman  
Diane Gottheil  
Susan & Michael Haney  
Anne Mischakoff Heiles &  
William Heiles  
Cheryl Hughes  
Peggy & Christopher  
Huson  
Marianne Kalinke  
Judith & Richard Kaplan  
Lisa & Mark Klinger  
Leonard (Len) Lewicki

Ann & Stephen Long  
Gigi & Frank Miles  
Martha & Thom Moore  
Jerald Wray & Dirk Mol  
Deb & Ty Newell  
Claudia Reich & Gary Olsen  
Brenda & Stephen Pacey  
Jill & James Quisenberry  
Karen & Michael Retzer  
Linda & Ronald Roaks  
Julia & Gene Robinson  
Deborah & Stephen Rugg  
Richard & Susan Schnuer  
Carol & Ed Scharlau  
Anne & David Sharpe  
Diana Sheets  
Mary Schuler & Stephen  
Sligar  
Nancy & Edward Tepper  
Pat & Allan Tuchman  
Hana & David  
Wickersheimer  
Rebecca & Paul Wigley  
Sarah Wigley  
Sarah & Charles Wisseman

### HELP ENSURE THE IMPACT OF THE ARTS

for future generations by  
becoming a donor today. Visit  
[KrannertCenter.com/Give](http://KrannertCenter.com/Give),  
contact us at 217.333.6700 or  
[advancement@krannertcenter.illinois.edu](mailto:advancement@krannertcenter.illinois.edu).

## MARQUEE CIRCLE AND LOOP MEMBERS

We gratefully acknowledge these individuals and businesses for their generosity and commitment to the arts. Their support enabled the Center to welcome back in-person audiences for Music, Theatre, Dance, and visiting artist productions this past season. Krannert Center continues to make accessibility improvements, co-commission works to help support artist partners, and focus on engagement work within the community. If your membership has lapsed and you'd like to renew, please contact Krannert Center Advancement at 217.333.6700 or [advancement@krannertcenter.illinois.edu](mailto:advancement@krannertcenter.illinois.edu).

[LIST CURRENT AS OF FEBRUARY 10, 2025]



Ghazala Ahmad  
 Melissa Huff & Richard Alkire\*  
 Walter Alspaugh  
 Nadja & Carl Altstetter  
 Mary & Kenneth Andersen\*  
 Ruth & James Anderson  
 Sally Anderson  
 Jean Manning & Alan Andreasen  
 Kathryn Seybert & Michael  
 Andrechak  
 Frances & Marc Ansel\*  
 Dianna Armstrong\*  
 Barbara E. Barnes  
 Paula & Clifford Barnes  
 Tangül & Tamer Basar  
 Jeanette & John Beck  
 Sherry & Nelson Beck  
 Carol & Carl Belber  
 Dorothy Bell  
 Erica & Alessandro Bellina  
 Carol Berthold  
 Doug Blair  
 Mary Blair  
 Marsha Clinard & Charles Boast  
 Arlene & James Borbely  
 Amy Mueller & James Brennan  
 Lois & Jack Brodsky by Daniel  
 Brodsky  
 Abbie & Mike Broga  
 Channing Brown  
 Elizabeth & Michael Brunk  
 Annette & John Buckmaster  
 Jayne & Richard Burkhardt Jr.  
 Carolyn G. Burrell

Ann & Roy Campbell  
 Timothy Temple & Jerry Carden  
 Beth & David Chasco  
 Kathleen & Felix Cimasky  
 Carol & John Clavadetscher  
 Harriet & Herschel Cline  
 Carol & Willis Colburn  
 Casey Sutherland & Linda  
 Coleman  
 Tina & John Colombo  
 Jongin Craggs  
 Deborah Day  
 Judith & Jack DeAtley  
 Elizabeth Cardman & Paul  
 Debevec  
 Nancy Dehmlow  
 Richard DeLong  
 Dixie & Evan Dickens\*  
 Britt East  
 Anastasia Economy  
 Matthew Nelson & Kim Eilts  
 Ann Einhorn  
 Lorene & Paul Ellinger  
 Anne Ellison  
 Jo & Thomas Emerson  
 Terry & Barbara England\*  
 Karen & Michael Folk  
 Sue Anne Fischer  
 Jill & Rusty Freeland  
 Beverly & Michael Friese  
 Michael Fuerst  
 Nancy & Bert Fuller  
 Michael Hughes & Dr. Marty Fung  
 Rita Garman  
 Victoria Christensen & Gary  
 Gladding  
 Melanie Loots & George Gollin\*  
 Shirley Soo & Matthew Gorman  
 Diane Gottheil

Ondine & George Gross  
 Margaret Rosso Grossman &  
 Michael Grossman  
 Julie & Nathan Gunn  
 Susan & Michael Haney  
 Sharon & Terence Harkness  
 Kathlene & Ron Harshman  
 Gözen & Chris Hartman\*  
 Melissa & Peter Hartman  
 Kathleen Harvey  
 Clare & Alan Haussermann  
 Jane Trishman Heaton  
 Barbara & John Hecker  
 Anne Mischakoff Heiles & William  
 Heiles  
 Jan & Bruce Hinley  
 Bernadine & Charles Hines  
 Holly & Kurt Hirschert  
 Kathryn Rybka & Darrell  
 Hoemann Photography  
 Janice Bahr & Erwin Hoffman  
 Joan & Peter Hood\*  
 Cheryl Hughes  
 Mary-Alayne & Robert Hughes  
 Peggy & Christopher Huson  
 Ingrid & Bruce Hutchings  
 Judith & Stanley Ikenberry\*  
 Laura & Gale Jamison  
 Michelle Sanden Johlas & John  
 Johlas  
 Nancy Johnson  
 Ronald Johnson  
 Joan Volkmann & John Jones  
 Martha Ann Jones  
 Patricia Jurgens  
 Patricia & Peter Kale  
 Maxine Kaler  
 Marianne Kalinke  
 Judith & Richard Kaplan

Paula Kaufman  
 Therese & Lawrence Kessler  
 Josephine & Douglas Kibbee  
 Brenda & Peter Kimble  
 Linda & R. Grear Kimmel  
 Jennifer Durham King & Roy King  
 Lisa & Mark Klinger  
 Sharon Pomerantz & Howard  
     Korey  
 Wynne Sandra Korr  
 Sheila & Philip Krein  
 David A. Krooks  
 Marilyn & Don Krummel  
 Nancy Parker & James Kuklinski  
 Cecile & Ira Levenson\*  
 Brenda Lerner-Berg  
 Leonard (Len) Lewicki  
 Jon Liebman  
 Ann & Stephen Long  
 Brenda & Morgan Lynge  
 Marina & Nenad Marjanovic  
 Kathryn & Stephen Marshak  
 Marilyn Marshall  
 Betsy Bachmann & Rebecca  
     McBride  
 Erica McClure  
 Susan & Brendan McGinty  
 Charles J. & Joanne J. McIntyre  
     by Family  
 Mrs. Jack H. McKenzie  
 Anna Merritt\*  
 Grace & John Micetich  
 Theresa & Bruce Michelson  
 Gigi & Frank Miles  
 Elizabeth & George Miley  
 Sallie & Norman Miller  
 Jerald Wray & Dirk Mol\*  
 Martha & Thom Moore\*  
 Armine & Rudolf Mortimer  
 Jane & Walter Myers  
 Janet & Douglas Nelson\*  
 Lubitsa Nenadov  
 A. Mark Neuman  
 Ty & Deb Newell

Richard Noel  
 Jeanette Nugen  
 Wilma & William O'Brien  
 Claudia Reich & Gary Olsen\*  
 Brenda & Stephen Pacey  
 Jean Paley  
 Donald Perrero  
 Marjorie Perrino  
 Dr. Jan Marie Aramini & Michael  
     Pettersen  
 Alice Pfeffer\*  
 Kathleen A. Holden & David  
     Prochaska  
 Jill & James Quisenberry\*  
 Gloria Rainer  
 Arlene & Julian Rappaport  
 Susan & Sam Reese  
 Karen & Michael Retzer  
 Connie Rieken  
 Marlyn Rinehart  
 Carole & Jerry Ringer\*  
 Clarette Ritz  
 Linda & Ronald Roaks  
 Phyllis Robeson  
 Lisa & Eric Robeson  
 Anne Robin  
 Julia & Gene Robinson  
 Karen Altay-Rosenberg & Paul  
     Rosenberg  
 Taya & Mike Ross  
 Deborah & Brian Ruddell  
 Deborah & Stephen Rugg\*  
 Shozo Sato  
 Carol & Ed Scharlau\*  
 Jane & Christian Scherer  
 Susan & Richard Schnuer  
 Kim Robeson-Schwenk & Dean  
     Schwenk\*  
 Susan & Ronald Serfoss  
 Kay & John Shaner  
 Anne & David Sharpe  
 Diana Sheets  
 Trent Shepard  
 Janice Sherbert

Jan & David Sholem  
 Diane & Richard Siemer  
 Birute & Vaidotas Simaitis  
 Patricia & Charles Simpson  
 Mary Schuler & Stephen Sligar  
 Audrey Ishii & Charles Smyth  
 Prudence Spodek  
 Cecile Steinberg  
 Margaret Stillwell  
 Sheila Sullivan  
 Patricia Plaut & Kenneth Suslick  
 Iris Swanson  
 Michelle & Jason Swearingen  
 Bonnie & Bob Switzer  
 Nancy & Edward Tepper  
 Shirley & Arthur Traugott\*  
 Masha & Brent Trenhaile  
 Carolyn Casady-Trimble & Ralph  
     Trimble  
 Devon Hague & Dallas Trinkle  
 Pat & Allan Tuchman\*  
 Carl L. Vacketta  
 Pamela & Michael VanBlaricum  
 Stella B. & C. Max Volk  
 Lynn Weisel Wachtel & Ira  
     Wachtel  
 Chip Walgren  
 Paula Watson  
 Catherine Webber  
 Tracy McCabe & Fabien Wecker  
 Kathy & Al Wehrmann  
 Barry Weiner  
 Susan & Robert Welke  
 Hana & David Wickersheimer  
 Rebecca & Paul Wigley  
 Sarah Wigley  
 Karen & William Wilkinson  
 Sarah & Charles Wisseman  
 Margaret Yeh  
 Elaine & Harold Yoon  
 Joan & Theodore Zernich  
 And gifts from four Anonymous  
     donors

---

\*Former member of the Krannert Center Advancement Council

---

**Memorial Gifts to the Marquee Circle**

Arthur Chitz & Stephen Levinson

Diana Sheets

Eric Dalheim

Melissa Huff & Richard Alkire

Robert L. Foote

Cheryl Hughes

Karen & Michael Retzer

Charles J. & Joanne J. McIntyre

Elizabeth Kaufman

Amy A. Rappaport-Lo

Arlene & Julian Rappaport

Atron Regen

Bernadine & Charles Hines



Pat Januszki & Dick Adams  
Ruth Wyman & Juan Alvarez  
Ellen & Gene Amberg  
Susan & Donald Armstrong  
Carol & Richard Arnould  
Charlotte Arnstein  
Grace Ashenfelter  
Keely Ashman  
Paul Blobaum & Dennis Azuma  
Judith Bach  
Susan & G. Tim Bachman  
Nancy & Earnest Barenberg  
Meredith & Joseph Barnes  
Sandra & Ritchie Barnett  
Maeline & Robert Barnstable  
Jim Barrett  
Jane & Peter Barry  
Kathleen & S. Eugene Barton  
Ronald & Susan J. Bates  
Starley Baxter  
Norma Bean  
Mary Beastall  
William Bechem  
Nora Few & Douglas Beck  
Susan & Wayne Bekiares  
Meredith Belber  
Kathleen & John Lansingh  
Bennett\*  
Laura & Kenneth Berk  
Carol & Richard Betts  
Sue Biddle  
Cynthia Biggers  
Mary Ann Boggs  
Tamara Bouseman  
Kathryn & Van Bowersox  
Kelly Bradham  
Vevi & Richard Brannon  
Hannah & Justin Brauer  
M. Q. Brewster  
Susan Stock & Anthony Brienza  
Kathleen Brinkmann  
Margaret & Donald Briskin  
Rebecca Brown

Leigh Deusinger & David Bruns  
Rosemary Buck  
Donald Buss  
Christine & Edwin Cahill  
David Campbell  
Helen & Andreas Cangellaris  
Carol Lite & Kenneth Cantor  
Donna & Steven Carter  
David Ceperly  
Elaine Bearden & Craig  
Chamberlain  
Sheryl & Robert Chambers  
Alexander Chang  
Candice Chirgotis  
Joan Clement  
Maureen & Neal Cohen  
Kristin Patton & John Coleman  
Janet & William Coombe  
Nancy Coombs  
Brad & Meggin Cooper  
Catherine & Jay Corwin  
Marguerite Courtright  
Kathleen Vance & Charles  
Cowger  
Nancy Creason  
Brian Cudiamat  
Barbara Curtis  
Luis Cuza  
Elizabeth & Robert Czyn  
Sandra Darby  
Millie Davis  
Patricia & Robert Davis  
Janis Chadsey & Al Davis  
Amy Hassinger & Adam Davis  
Susan Meinkoth & Peter Davis\*  
Lucia & Ron Deering  
Jo Ellen DeVilbiss  
Nancy & Harold Diamond  
Carol Diener  
Terri Dodson  
Victoria Pifalo & Kieran Donaghy  
Jean Driscoll  
Elizabeth & Don Dulany  
Astrid & John Dussinger  
Emily Edwards  
Joyce Eisenstein  
Sandra Ahten & Kevin Elliot  
Ellen & Douglas Elrick  
E. R. Ensrud  
Tara Toren-Rudisill & Dustin  
Erickson

Mary Ann Espeseth  
Lea Mellom & Nicholas Fakis  
Eleanor & Walter Feinberg  
Kim & Allan File  
Rebecca Netti-Fiol & Stephen  
Fiol  
Sandy & Joe Finnerty  
Judith & Dale Flach  
Catherine Flood  
Kristin & James Flores  
Rose Marie & Brendan Foley  
Barbara Ford  
Tracey Ford  
Robin & Robert Fossum\*\*  
Shari & Ben Fox  
Claudia & Eduardo Fradkin  
Carrie & Stephen Franke  
Natalie Frankenberg  
Karen & Alain Fresco  
Barbara Fuller-Curry  
Margie Harris & Richard Furr  
Pamela & Samuel Furrer  
Janet Kalmar & Benjamin  
Galewsky  
Laurie Rund & Rex Gaskins  
Donna & J. Fred Giertz  
Amy Gilbertz  
Inga Giles  
Evelyn & Joseph Gill  
Martha & Rhanor Gillette  
Alquin Gliane  
Nirmal Gokarn  
Jennifer Arp & Brian Gonner  
Michelle Gonzales  
Nancy Goodall  
Rose & William Goodman  
Miranda Machula & Christopher  
Green  
Karl Greve  
Megan & Ronald Guenther  
Kimiko Gunji  
Lila Sullivan & Don Gunning  
Rosangela Silva & Ibrahim Hajj  
Barbara Danley & Robin Hall  
Karen Greenwalt & David  
Hamilton  
Karen & David Harris  
Cynthia Capek & Edward Harvey  
Jenny & Dick Harvey  
Dauna Hayman  
Christine & Bruce Hegemann



John Heiligenstein  
 Jannette & Donald Helfrich  
 Marne Helgesen  
 Susan & Edwin Herricks  
 Beverly Herzog  
 Shawna Scherer & Steve Higgins  
 Lila & Larry Hill  
 Paul Hinson  
 Jennifer & Paul Hixson  
 Zarina & Hans Hock  
 Kay Hodson  
 Judith Hoffman  
 Marilee & Robert Hoffswell  
 Jean Holley  
 Edit & Leland Holloway  
 Rhonda Fallon & Brant Houston  
 Jessie Houston  
 Kimberly & Mark Hubbard  
 Gail Hug  
 Brady Hughes  
 Ann Roseman & Bob Huhn  
 Rhonda Hunter  
 Laura Keller & Robert Hurst  
 Michael Lambert & Timothy  
     Hutchison  
 Karen & David Hyman  
 Andrew Ingram  
 Elizabeth & Henry Jackson  
 Meghan & Cyril Jacquot  
 Janet Elaine Guthrie & Mark  
     Jaeger  
 Helen & Francis Jahn  
 Leah & Michael Jay  
 Stephen Follis & Daniel Jensen  
 Bruce Johnson  
 David Johnson  
 Elizabeth Johnston  
 Patricia & John Jordon  
 Debra Karplus  
 Lizbeth Katsinas  
 Benita & John Katzenellenbogen  
 Viktoria Ford & Stephen Kaufman  
 Laura & Don Keefer  
 Patrick Keenan  
 Megan & David Kees  
 Martha & Rolland Kelley  
 Beverly & George Kieffer  
 Anna Koem & Jin Kim  
 Reeva & Daniel Kimble  
 Janice Kimpel  
 Margaret Patten & Todd Kinney

Jeffrey & Patricia Kirby  
 Gerri Kirchner  
 Nancy Kintzel  
 Mary Klein  
 Julia Kling  
 Patricia & Frank Knowles  
 Laura & Kipling Knox  
 Christa Knust  
 Janice Hiland & Stephen  
     Kolderup  
 Marilyn Kohl  
 Antje & Edward Kolodziej  
 Jean & Thomas Korder  
 Shari L. Kouba  
 Joan Kozoll  
 Elizabeth & David Krchak  
 Curtis Krock  
 Carrie & Richard Kubetz  
 Judith Kutzko  
 Barbara Wilson & John Lammers  
 James Land  
 Susan & Bruce Landreth  
 Annette & Charles Lansford  
 Casandra & Kenneth Larvenz  
 Janet Schultz & Russell Lascelles  
 Bernadette & Gary Laumann  
 Kathy Lee  
 Cecilia & Robert Lentz  
 Faye Lesht  
 Janet & David Leslie  
 Lil Levant  
 Daniel Leward  
 Patricia & Vernon Lewis  
 Mary & Louis Liay  
 Larry Lister  
 Gail & John Little  
 Xinran Liu  
 Barbara & James Linder  
 Jaclyn & Jeffrey Loewenstein  
 Lori & James Lohrberg  
 Cynthia & Michael Loui  
 Margaret & Erick Loven  
 Brandi & Jason Lowe  
 Ann Lowry  
 Robin Luebs  
 Scott Macleod  
 Marguerite & Walter Maguire  
 Jeanne Connell & Joseph  
     Mahoney  
 Tracy & J. Victor Malkovich\*  
 S. Pauline & Mankin Mak

Jeannine Malmsbury  
 Beth Martin  
 Mairead Martin  
 Leslie & Gary Mason  
 Dwayne D. McBride  
 Jane & Michael McCulley  
 Charles J. & Joanne J. McIntyre  
     by Family  
 Alina Reeves & Joseph Meier  
 Carol Meitz  
 Yonghwa & Daryl Meling  
 Christen Mercier  
 Sharron & David Mies  
 Fadi Mikhail  
 Charlotte Mattax Moersch &  
     William Moersch  
 Anna Louise & Terry Moore  
 Linda & Mark Moore  
 Liz & Dan Morrow  
 Marie Mueller  
 Diane & Michael Murphy  
 Lucy Miller Murray & Martin L.  
     Murray  
 Jane & Alan Nathan  
 Carol Neely  
 Jeffrey Nelson  
 Eve Harwood & Mark Netter  
 Stephanie Nevins  
 Peter Newman & Jerome Ng  
 Jack Nibling  
 Lynda Dautenhahn & Lee  
     Nickelson  
 Matthew Noel  
 Holly Nordheden  
 Jenene & Richard Norton  
 Julie O'Neill  
 Donna & Paul Offenbecher  
 Julia & David Ohlsson  
 Mary & Robert Oliver  
 Janice Olson  
 David Ostrodka  
 Elaine Fowler Palencia & Michael  
     Palencia-Roth  
 Martha Palit  
 Tracy Parsons  
 Michaela Passalacqua  
 Marjorie Perrino  
 Aiko Perry  
 Jaya Yodh & Curtis Perry  
 Jean & G. David Peters  
 Linda & Lyn Peterson

Constance & James Phillips  
 Mary Phillips  
 Laura & Mark Pils  
 Julie Woodworth & Daniel Pope  
 Jan Porterfield-Keenan  
 Patricia Powell  
 Nancy & Lester Rabe  
 Japhia Jayasingh Ramkumar &  
     Davendra Ramkumar  
 Lois & Edward Rath  
 Judith Rathgeber  
 Margaret A. Reagan  
 Deborah & Michael Reagan  
 Bruce Zimmerman & Maureen  
     Reagan  
 Yvonne & Paul Redman  
 Lisa Courtney & Charles Reifsteck  
 Lisa & William Rettberg  
 Louise Rogers  
 Christie Roszkowski  
 Thomas Rozanski  
 Katherine Ryan  
 Lynn Ryle  
 Lynne & Gregory Sancken  
 Beverly Sanford  
 Joan Farwell-Sargent & Michael  
     Sargent  
 Mary Jane & Todd Schermer  
 Susan K. & Paul K. Schlesinger  
 Grace & William Schoedel  
 Kathleen & Mark Schoeffmann  
 Dawn Schultz  
 Patricia Fowler & Jose Schutt-  
     Aine  
 Molly & John Scott  
 Rose & James Scott  
 Judy & John Sehy  
 Rochelle Sennet  
 Kay & Gary Senteney  
 Jon Seydl  
 Crystal & Michael Shaw  
 Alys & Daniel Shin  
 Sonya Sholem  
 Kim Simmons  
 Ralph Simmons  
 Lily Siu  
 Kim L. Smith & David Skadden  
 Elzbieta & Piotr Skorupa  
 Elon Slaughter  
 Donna Hacker Smith

Deborah & James Smith  
 Marianne Abbey-Smith &  
     Campbell Smith  
 Elyse Rosenbaum & Robert Smith  
 Avigail & Marc Snir  
 Melissa Breen & Cheryl Snyder  
 Penelope & Anthony Soskin  
 Nancy Sottos  
 Becky Wauthier\* & Gary Spezia  
 Peter Cohen & Jeffrey Sposato  
 Elizabeth Stern  
 Deborah Stewart  
 Gary Stitt  
 Andrea Beller & Kenneth  
     Stolarsky  
 Heather Stone  
 Cathy Gao & Peter Sun  
 Cynthia Swanson  
 Tara & Jeff Swearingen  
 Kathryn & Jonathan Sweedler  
 Curtis Stephens & Alethea Taylor  
 Kristine Light & Donald Taylor  
 Wes Taylor  
 Kevin Teeven  
 Charles Titus  
 Diane Durbin & David Tjaden  
 Sharon & Ross Toedte  
 Peter Tomaras  
 Joan & Walter Tousey  
 Susan & John Townsend  
 Marty & Richard Traver  
 Jonathan Trupin  
 Joan & Stanley Tunnell  
 Julia & Thomas Ulen  
 Grant Ullrich  
 Candice & Frederick Underhill  
 Kathryn & Alfonso Valdes  
 Linda Van Dyke  
 Linda & R. E. Veltman  
 Julie Mason-Vermeulen & Paul  
     Henri Vermeulen  
 George Vickery  
 Yvonne & Joseph Vitosky  
 Michael Vitoux  
 Shirley Walker  
 June & Ashton Waller  
 Diane & James Wardrop  
 Mari McKeeth & Heidi  
     Weatherford  
 Ann & Ronald Webbink

Carl Pius Weibel  
 Cecelia & Morton Weir  
 Elizabeth Weiss  
 Paula & Kenneth Weissman  
 Michelle & Michael Wellens  
 Hannah Werner  
 Glennys Mensing & Roger West  
 Deborah & Michael Westjohn  
 Karen & John Whisler  
 Stephanie Daniels & Steven  
     White  
 Donna & Thomas Williams  
 Robert Malik Winter by  
     Sarah Hasib, Pete & Molly  
     Yunyongying  
 Deanna & Kurt Wisthuff  
 Susan & Mark Wisthuff  
 Ava & Richard Wolf  
 Helen Zhang & Tony Wong  
 Irene & Stanley Wu  
 Mary & Gene Wurth  
 Ruth Wyman  
 Janie & Ehud Yairi  
 Wendy & Glen Yang  
 Rittchell & Peter Yau  
 Michael Yonan  
 Sally & Stephen Zahos  
 Yvonne & Gerard Ziegler  
 Sharon Shavitt & Steven  
     Zimmerman  
 And gifts from four Anonymous  
     donors

---

### Student Loop

Sudhanshu Agarwal  
 Evelyn Ashley  
 Ana Downing & David Balut  
 Abigail Berg  
 Jessica Blomberg  
 John Bullock  
 Yu-Ju Chang  
 Hsinju Chen  
 Kevin Chen  
 Pyunghwa Choi  
 Trisha Choudhary  
 Ellen Cockman  
 Sriram Devata  
 Ozum Erzurumlu  
 Qiuling Fan

Lily Freebery  
 Ruo-Jing Ho  
 Daniel Hong  
 Chang Hu  
 Muyan Hu  
 Allyson Imig  
 Molly Jennings  
 Abhishek Joshi  
 Matt Kelley  
 Kathryn King  
 Zackary Landers  
 Julia Lee  
 Cassie Liu  
 Hongyi Liu  
 Liam McBride  
 Jacob McGrath  
 Grace McMahon  
 Isaiah Menard  
 Rachel Moan  
 Qiaoyi Nie  
 Avanthi Obadage  
 Matthew O'Brien  
 Yanni Ovalle  
 Kyuri Park  
 Samuel Rosner  
 Kathleen Roush  
 Qihao Zhan & Paul Rozzi  
 Mary Sanderson  
 Joseph Self  
 Keyi Shen  
 Wilson Shrout  
 Jinghan Sun  
 Zhuoqi Tao  
 Zeyu Tian  
 Thinh Tran  
 Rebecca Vandewalle  
 George Vickery  
 Gloria Wang  
 Po-Wen Wang  
 Irene Wilken  
 Catherine Winter  
 Ananya Yammanuru  
 Yi Yang  
 Yuyuan Yang  
 Christopher Young  
 Lisa Young  
 Hongrui Zhao  
 Yucheng Liang & Zhongmin Zhu  
 And a gift from one Anonymous  
 donor

---

### Honorary Gifts to the Loop

In honor of Adi Berman  
 Maya Crystal  
 In honor of Marie Cassioppi  
 Kevin Langreck  
 In honor of Janis Chadsey  
 Al Davis  
 In honor of the Chinese American  
 Association of Central Illinois  
 Helen Zhang & Tony Wong  
 In honor of Nathan Gunn  
 Nancy Kintzel  
 In honor of Gail W. Hague  
 Devon Hague & Dallas Trinkle  
 In honor of Michael H. Leroy  
 Deborah & James Smith  
 In honor of Richard Noel  
 Matthew Noel  
 In honor of Doug Nelson  
 Patricia Powell  
 In honor of Mary A. Perlstein  
 Nancy & Kenneth Kirsch  
 In honor of Michael D. Ross  
 Barbara Danley & Robin Hall  
 In honor of Shozo Sato  
 Kristin Patton & John Coleman  
 In honor of Cheryl Snyder  
 Jane & Walter Myers

---

### Memorial Gifts to the Loop

Jane M. Barrett  
 James Barrett  
 Helen Zhang & Tony Wong  
 Alex P. Bhanos  
 Susanne Bhanos  
 Donald W. Clegg  
 Susan & John Townsend  
 Patricia A. Coleman  
 Kristin Patton & John Coleman  
 Ralph D. DeMoss  
 Linda & Edwin Goebel  
 Norman K. Denzin  
 Katherine Ryan  
 Bob Eisenstein  
 Joyce Eisenstein  
 Peter Feuille  
 Deborah & James Smith

Ernest Gullerud  
 Walter Alspaugh  
 Joan & Peter Hood  
 Marguerite & Walter Maguire  
 Walter T. Gunn  
 Julia & Gene Robinson  
 Sandy I Helman  
 Carol & Carl Belber  
 Meredith Belber  
 Stephen Gobel  
 Elizabeth Simmons-O'Neill & John  
 O'Neill  
 Murray Robbins  
 Rose & Daniel Sloven  
 Nancy & Edward Tepper  
 Peter S. Kimble  
 Sandra Hamm  
 Reeva & Daniel Kimble  
 Maxine & David Kuehn  
 Jan, Harold, Lori, Tim, Dan, & Pat  
 Porterfield  
 Audrey Wells & Jeff Zolitor  
 Alvin G. Klein  
 Mary Klein  
 Stephen E. Levinson  
 Robin & Robert Fossum  
 Nancy & Phillippe Geubelle  
 Ondine & George Gross  
 Karen & David Hyman  
 Janet & Douglas Nelson  
 Susan S. McDonald  
 Anonymous  
 Carolyn H. McElrath  
 Ellen & Gene Amberg  
 Charles J. & Joanne J. McIntyre  
 Kira & Chad Swanson  
 Joyce D. Meyer  
 Faye Lesht  
 Dirk V. Mol  
 Martha & Thom Moore  
 Janet & Douglas Nelson  
 Anne & David Sharpe  
 Diana Sheets  
 Cecile Steinberg  
 Nancy F. Morse  
 Alice Pfeffer  
 Elizabeth Mulvaney & Christopher  
 Ramsey  
 Rosann G. Noel  
 Matthew Noel

Barbara Orden  
   Fran Abramson  
   Tara Blau & Ephraim Back  
   Carol Lite & Kenneth Cantor  
   Ann Einhorn  
   Sheila & Philip Krein  
   Jaclyn & Jeffrey Loewenstein  
   Melissa & Samuel Moore  
   Janet & Douglas Nelson  
   Michelle Perry  
   Alice Pfeffer  
   Jan & David Sholem  
   Jordan Smith  
   Audrey Wells & Jeff Zolitor  
 David Prochaska  
   Mary & Francis Brady  
   Debra & James Busey  
   Carol Diener  
   Mary Gentry  
   Megan & Ronald Guenther  
   Judith Iversen  
   Barbara Kammer  
   Laurie & Arthur Kramer  
   Barbara Wilson & John Lammers  
   Annette & Charles Lansford  
   Emmie Fisher & Shung-Wu Lee  
   Penelope & Anthony Soskin  
   Catherine Thurston  
 Robert W. Resek  
   Donna & J. Fred Giertz  
   Martha Green  
   Joan & Peter Hood  
   Brenda & Morgan Lyng  
 Terry D. Roush  
   Kathleen Roush  
 Melvin Rubin  
   Lesley Rubin  
 Annette H. Schoenberg  
   Jannette & Donald Helfrich  
 Janet Simmons  
   Ralph Simmons  
 Ina Tomaras  
   Peter Tomaras  
 Dorothy H. Ulbrick  
   Martha & Rhanor Gillette  
 Scott R. White  
   Nancy Sottos  
 William J. Wilkinson  
   Camille & Robert Born  
   Linda Van Dyke  
   Paula, Ken, Rachel, Marc, & Yoni  
 Weissman

---

# KRANNERT CENTER VOLUNTEERS

## COMMUNITY VOLUNTEERS

Paula Abdullah  
Charles Adegboie  
David Allen  
Elizabeth Allison  
Shiela Anderson  
Todd Anderson  
Faith Arnold  
Rocio Arroyave-Jamison  
Richard Balsbaugh  
Dan Bard  
Assel Barinova  
David Barnett  
Jane Barry  
Mary Berg  
Ann Bergeron  
Kathryn Bergeron  
Andres Bielenberg  
Cameron Bigler  
Elisa Booth  
Lisa Bourial  
Deborah Bramowicz  
George Brock  
Jonne Brown  
Reuben Brown  
Jeff Buoy  
Susan Cannon  
Catherine Capei  
John Carmody  
Karen Chaddick  
Felix Chan  
Allen Chandlier  
Katherine Chang  
Sharon Chao  
Molly Chartrand  
Paige Chew  
Trisha Choudhar  
Pei Hsien Chu  
Kathy Cimakasky  
Emma Rose Conway  
Evie Cordell  
Nicole Cruz  
Pamela Cultra  
Paul D'Agostino  
Susan Darmody  
Robert Daughery  
Jean Davidson  
Pamela De Ley

Tiffany Dean  
Karen Decker  
Lori Deyoung  
Nancy DiBello  
Sun Dieker  
Janelle Dobbins  
Rory Dodge  
John Donovan  
David Dorman  
Tamara Ducey  
Martin Dull  
Debra Eichelberger  
Stephanie Ellis  
Beth Engelbrecht-Wiggans  
Richard Engelbrecht-Wiggans  
Roger Epperson  
Beth Evans  
DJ Evans  
Clifford Federmeier  
Judith Federmeier  
Susan Feldman  
Darwin Fields  
Angela Fikes  
Roger Fredenhagen  
Michael Freeman  
Isabella Galgano  
David Gay  
Sherry Geraths  
Robin Goettel  
Katrina Good  
Barbara Gordon  
Gene Grass  
Robin Hadley  
Katherine Hansen  
Samuel Harrison  
Christiana Heidich  
Sarah Henn  
Kathleen Henry  
Jill Hieronymus  
Casey Higgins  
Brenda Hinthorn  
Karen Hite  
Carol Ho  
Steve Holstein  
Kaylee-Ann Hopkins  
Clifford Jakopo  
Cynthia Jean  
Roland Jean  
Linea Johnson

Ron Johnson  
Marcy Joncich  
Alice Jones  
Barbara Jones  
Dave Jordan  
Mary Ann Judd  
Carl Kagawa  
Rashimi Kapoor  
Debra Karplus  
Rafal Kendracki  
Cody Kielzman  
Marina Kolodyazhnaya  
Charles Kroner  
Bruce Kruger  
Susumu Kudo  
Robert Lanier  
Diane Lassila  
Jake Lattyak  
Sydney Lazarus  
Rudy Leon  
Qingyun Li  
Jean Liang  
Qingwen Liang  
Lynn Lin  
Lynda Lopez  
Penny Lopez  
Pezz Lopez  
Virginia Lozar  
Nico Lynx  
Fallon MacFarland  
Lorraline Maimborg  
Christina Majchizak  
Kendra Marsh  
Maria Martin  
Bobbi McCall  
Jeannine McDonald  
James McEnerney  
Linda McEnerney  
Bridget McGill  
Emilee McGill  
Linda Meachum  
Kathleen Metcalf  
Sharron Mies  
Carol Miles  
Carol Miller  
Amy Mills  
Julie Mills  
Patrick Mills  
Susan Mitze

Carol Mizrahi  
Frank Modica  
Lisa Mullins  
Heather Munro  
Christina Myers  
Nguyen Nguyen  
Debbie Nickey  
Judy Nolan  
Dick Norton  
Angela O'Brien  
Marjorie Olson  
Volodymyr Opryschenko  
Irem Orsei  
Carol Osgood  
Brenda Pacey  
Cecillia Paoppi  
Eric Peters  
Brittney Pillow  
Sarah Pirila  
Mark Polland  
Tressa Porter  
Renee Potter  
Rosa Pullen  
Robert Rasmus  
Gloria Rendon  
Gail Rice  
Lan Richart  
Nancy Rickey  
Jordan Rinkenberger  
Linda & Ronald Roaks  
Judy Rudnicke  
Teresa Rupsch  
Barbara Schleicher  
Mark Sellers  
Christel Seyfert  
Lei Shanbhag  
Carolyn Sharp  
William Shaw  
Beth Shelton  
Mary Shultz  
Connie Smith  
Pierre Stephens  
Deb Stoltz  
Carrie Storrs  
Kelli Stretesky  
Steven Stuff  
Shandra Summerville  
Zhuoqi Tao  
Alice Taylor

John Taylor  
Sarah Taylor  
Donna Telley  
Marissa Terronez  
Catherine Testory  
Tracy Thomas  
Susan Thompson  
Joy Thornton- Walker  
Marina Tinone  
Lee Trail  
Karla Trimble  
Owen Tucker  
Delaney Valese  
Rodney Vanous  
Patti VerStrat  
Brenda Wakeland  
Mary Walker  
Qin Wang  
Kelly Warner  
Jean Weigel  
Whitney Welsh  
Taylor White  
Liesel Wildhagen  
Douglas Williams  
Jessica Williams  
Julie Wirth  
Erik Wolfing  
Lowre Young  
Rui Zhao  
Russell Zillman

Emma Chang  
Xixi Chen  
Ti-Chung Cheng  
Judy Chiang  
June Chun  
Leanna Cui  
Amanda DuVall  
Yating Feng  
Ramya Gandhi  
Griffin Garrett-Grossman  
Rashmi Ghonasgi  
Vix Henry  
Uma Iyer  
Marge Jerich  
Xiaorui Jiang  
Yixuan Jin  
Nithya Kalwala  
Andrew Klopp  
Susan Koernr  
Maria Kozar  
Mildred Kumar  
Toby Kutz  
Maria Kuzniar  
Amani Lalial  
Lucas Langley  
Jessica Larri  
Erin Lee  
Isabella Lee  
Joy Lee  
Edward Li  
Zilu Li  
Tina Lin  
Wei Liu  
Xiangyi Liu  
Utsav Majumdar  
Liliana Mansfield  
Anne Margalith  
Emma Mayes  
Morgan Miller  
Ethan Miranda  
Kevin Nie  
Qiaoyi Nie  
Nicholas Orr  
Steven Ortega  
Yingrui Ouyang  
Suraj Patel  
Wesley Pereira  
Diana Pham  
Natalia Rafalko  
Malika Raffensperger-Schill  
Eliza Refaat  
Nicolle Reynolds  
Julia Rhodes

Jacqueline Perez Rivas  
Trevor Santiago  
Anna Schuster  
Kaustabh Sharma  
Dan Shen  
Bangyan Shi  
Zhan Shi  
Patricia Simpson  
Pratik Sinha  
Daniel Song  
Wenjie Song  
Lea Stangenes  
Deepak Subramanian  
Pooja Tetali  
Alexandria Thomas  
Tejashree Tirunagari  
Jenny Tran  
Kelly Trevillian  
Jiaxin Wan  
Gloria Wang  
Yining Wang  
Cierra Welch  
Samyla Williams  
Nicholas Wooden  
Ananya Yammanuru  
Huiya Yang  
Jie Zhang  
Nicole Zhang  
Bowang Zhou  
Ino Zhu

---

#### **KRANNERT CENTER STUDENT ASSOCIATION**

Aminah Adebayo  
K. Rae Ambroz  
Helen Anil  
Yusra Ansari  
Caroline Atkinson  
Claire Baffes  
Subhodeep Bakshi  
Kirsten Barker  
Josie Besch  
Aakash Bhide  
Surman Bhowmick  
Alyx Bibbs  
Nick Boivin  
Zach Bottoms  
Alexa Bucio  
Andrew A. Butterworth  
Danielle Caccamo  
Alice Cao

Utsav Majumdar  
Liliana Mansfield  
Anne Margalith  
Emma Mayes  
Morgan Miller  
Ethan Miranda  
Kevin Nie  
Qiaoyi Nie  
Nicholas Orr  
Steven Ortega  
Yingrui Ouyang  
Suraj Patel  
Wesley Pereira  
Diana Pham  
Natalia Rafalko  
Malika Raffensperger-Schill  
Eliza Refaat  
Nicolle Reynolds  
Julia Rhodes

---

# KRANNERT CENTER STAFF

Mike Ross, Director  
Cheryl Snyder, Director of Advancement  
Terri Anne Ciofalo, Associate Director for Production  
Maureen V. Reagan, Associate Director for Administration and Patron Experience  
Lindsay Dalrymple, Assistant Director for Operations  
Julianne Ehre, Assistant Director for Programming and Engagement

---

## EVENTS

Andrew Almeter, Senior Production Coordinator for Events  
Bree Brock, Production Coordinator for Events  
Rachel Gladd, Performing Arts Events Coordinator  
Rebecca Russell, Events Technical Supervisor

---

## PROGRAMMING AND ENGAGEMENT

Julianne Ehre, Assistant Director for Programming and Engagement  
Jason Finkelman, Artistic Director of Global Arts Performance Initiatives  
Emily Laugesen, Director of Community Engagement  
Sam Smith, Director of Civic Engagement and Social Practice  
Dora Watkins, Director of Campus Engagement

---

## ADVANCEMENT

Cheryl Snyder, Director of Advancement  
Bethany Whoric, Associate Director of Advancement  
David Drake, Advancement Team Assistant  
Frank Niemeyer, FAA Annual Giving Officer

---

## OPERATIONS

Lindsay Dalrymple, General Manager

### Director's Office

Zia Moon, Krannert Center Showcase Director, Office and Communications Support Specialist  
Vanessa Lane, Office Manager

## Building Operations

John O. Williams, Facility Manager  
Tony Mapson, Assistant Facility Manager  
Joe Butsch, Building Electrician  
Scott Butler, Eric Carr, Austin Dearth, Sara Dietrich, Jessica Fancher, Bryan Franzen, Jacob Lerch, Chad Schwenk, Attendants

---

## MARKETING

Maureen V. Reagan, Associate Director for Administration and Patron Experience

## Communications

Sean Kutzko, Assistant Communications Director  
Nicholas Mulvaney, Art Director  
Jodee Stanley, Program and Web Editor

## Public Services

Amy Thomas, Food Services Director  
Elizabeth Henke, Stage 5 Bar Manager  
Michael Bunting, Hospitality Supervisor  
John Ingalls, Culinary Worker  
Whitney Havice, Ticketing and Patron Services Director  
Ann-Marie Dittmann, Patron Services Assistant Director  
Ty Mingo, Assistant Ticket Services Director  
Jon Proctor, Nick Wurl, Ticket Sales Supervisors  
Adrian Rochelle, Front of House Performance Supervisor

---

## PRODUCTION

Terri Anne Ciofalo, Director of Production  
Maria Miguens, Production Manager

## Audio Department

Rick Scholwin, Audio Director  
Alec LaBau, Associate Audio Director/Video Director  
Tyler Knowles, Assistant Audio Director

## Costume Shop

Andrea Bouck, Costume Director  
Richard Gregg, Costume Rentals Director/Wardrobe Adviser/Associate Costume Director  
Paige Stewart-Rankins, Hair & Makeup Supervisor

Julianna Steitz, First Hand  
April McKinnis, EB McTigue, Cutters/Drapers  
Kari Little-McKinney, Theatrical Stitcher

## Lighting Department

Lisa Kidd, Lighting Director  
David Krupla, Associate Lighting Director  
Nick Jukes, Theatrical Lighting Coordinator

## Properties Department

Adriane Binky Donley, Properties Director  
Kira Lyon, Assistant Properties Director

## Scene Shop

Ryan Schultz, Technical Director  
Tatsuya Ito, Associate Technical Director  
Bill Kephart, Scene Shop Office Administrator  
Bobby Reynolds, Theatrical Scene Shop Coordinator  
Kayley Woolums, Theatrical Scene Shop Assistant

---

## PERFORMING ARTS BUSINESS SERVICE CENTER

Jenell Hardy, Director of Business Services  
Macauley Allen, Business Services Specialist  
Debbie Delaney, Accounting Staff

# WE'RE SO GLAD YOU'RE AT THE CENTER

We work to create the best possible setting for the experiences you seek and find here.

## NECESSARIES

Restrooms are located in the foyers of Foellinger Great Hall, Tryon Festival Theatre, and Colwell Playhouse; the east entrances on the Lobby level; and in each elevator lobby on Level 1 and Level 3. Lobby restrooms and one restroom in each elevator lobby are fully accessible and contain baby-changing stations.

Ushers will be happy to provide you cough drops courtesy of St. Joseph Apothecary, or disposable foam earplugs if the place starts rockin'.

If you or a companion needs medical assistance, contact an usher or other staff member.

Please take a moment before the performance to note the theatre exits nearest to you. If it becomes necessary to evacuate the theatre, please remain calm, follow the instructions of the house staff, and exit in an orderly fashion to the appropriate safe meeting location, which will be announced to you.

## PHONES AND DEVICES

The use of cell phones, cameras, and recording devices during performances is prohibited unless otherwise announced from the stage.

## LATE ARRIVALS

As a courtesy to performers and audience members, latecomers will be seated only at times selected in advance by the artist. Should you find that you've arrived late to a performance, our Patron Services staff will keep you informed about the earliest seating opportunity.

## LOST ITEMS

If you are in need of Lost and Found, please visit the Patron Services counter. We will do our best to reunite object and owner!

## TICKET RETURNS

If you find you can't attend a performance, please contact the Ticket Office in advance, preferably by 6pm the day before the performance ([kran-tix@illinois.edu](mailto:kran-tix@illinois.edu) or 217.333.6280). We never charge a handling fee on ticket transactions.

## ACCESSIBILITY

Krannert Center for the Performing Arts is committed to making experiences accessible for all patrons, and we are delighted to provide a number of services to assist you. Krannert Center is equipped with an assisted listening system, wheelchair-accessible and no-step/few-step seating, and large-print programs, Braille programs, and American Sign Language interpreters are available with three weeks' advance notice.

For assistance regarding your visit, please contact [patronservices@krannertcenter.illinois.edu](mailto:patronservices@krannertcenter.illinois.edu) or 217.333.9716 or visit [go.KrannertCenter.com/Accessibility](http://go.KrannertCenter.com/Accessibility).

Para ayuda en relación con su visita, favor de enviar un email a:

Pour vous aider dans votre visite, prière de nous envoyer un courriel à:

欢迎! 如若您对您的造访需要帮助, 请发送电子邮件至:

स्वागत है! अगर आपको अपने रहने के लिए मदद चाहिए, ईमेल कीजिए:

환영합니다! 방문에 관해 도움이 필요하실 때에는 ...  
에게 이메일로 문의하시기 바랍니다:

**PATRONSERVICES@KRANNERTCENTER.ILLINOIS.EDU**  
**217.333.9716**



SA APR 26 AT 7:30PM

# JESSIE MONTGOMERY AND THIRD COAST PERCUSSION



krannert center  
FOR THE PERFORMING ARTS AT ILLINOIS