

PHOTO BY ANDREW ECCLES / DECCA



**RENÉE FLEMING, SOPRANO**  
**HOWARD WATKINS, PIANO**  
**VOICE OF NATURE – THE ANTHROPOCENE**

Saturday, January 25, 2025, at 7:30pm  
Foellinger Great Hall

---

# PROGRAM

RENÉE FLEMING, SOPRANO

HOWARD WATKINS, PIANO

VOICE OF NATURE – THE ANTHROPOCENE

*The following is accompanied by a film provided by National Geographic. The audience is asked kindly to hold applause until the end of this set.*

Hazel Dickens (1925–1911)	“Pretty bird”
Georg Frideric Handel (1685–1759)	“Care Selve” from <i>Atalanta</i>
Nico Muhly (b. 1981)	“Endless Space”
Joseph Canteloube (1879–1957)	“Bailero” from <i>Songs of the Auvergne</i>
Maria Schneider (b. 1960)	“Our Finch Feeder” from <i>Winter Morning Walks</i>
Björk (b. 1965)	“All is Full of Love”
Heitor Villa-Lobos (1887–1959)	“Epílogo” from <i>Floresta do Amazonas</i> (piano solo)
Howard Shore (b. 1946)	“Twilight and Shadow” from <i>Lord of the Rings</i>
Kevin Puts (b. 1972)	“Evening”
Curtis Green	“Red Mountains Sometimes Cry”
Burt Bacharach (1928–2023)	“What the World Needs Now”

## *Intermission*

*Entr’acte: Jackson Browne “Before the Deluge” (recording)*

*Arrangement: Caroline Shaw, with Rhiannon Giddens, Alison Krauss, Renée Fleming, & Yannick Nézet-Séguin, piano*

Reynaldo Hahn (1874 –1947)	“L’heure exquise” “Si mes vers avaient des ailes” “Les Étoiles”
Ruggero Leoncavallo (1857 –1919)	“Musette svara sulla bocca viva” from <i>La bohème</i>
Francesco Cilea (1866 –1950)	“Io son l’umile ancella” from <i>Adriana Lecouvreur</i>
Jerome Kern (1885 –1945)	“All the Things You Are”
Andrew Lippa (b. 1964)	“The Diva”

*Renée Fleming appears by arrangement with IMG Artists, [www.imgartists.com](http://www.imgartists.com).*

*Ms. Fleming’s jewelry is by Ann Ziff for Tamsen Z.*

## THANK YOU FOR SPONSORING THIS PERFORMANCE

With deep gratitude, Krannert Center for the Performing Arts thanks all 2024–25 Patron Sponsors and Corporate and Community Sponsors, and all those who have invested in Krannert Center.

In addition to performance sponsors, Krannert Center is deeply grateful for the generosity and steadfast support from our season-long patrons and corporate and community partners showcased in the Philanthropy & Advocacy section of our program book. These relationships form the cornerstone of our ability to bring unforgettable performances and enriching experiences to our audiences.

This event is supported by:



**CAROL & JERRY RINGER**

*Endowed Sponsors*

Thirty-three Previous Sponsorships  
Two Current Sponsorships



**JOAN & PETER HOOD**

*Endowed Sponsors*

Thirty-three Previous Sponsorships  
Two Current Sponsorships

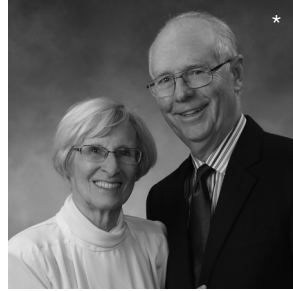


"Our favorite sights and sounds are found at Krannert Center, and new favorites await us."  
—**SARAH K. SPAULDING**, *Endowed Sponsor*



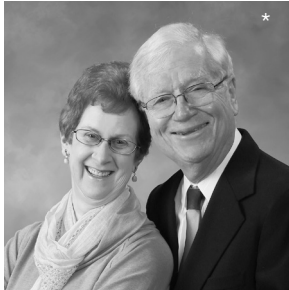
**MARGARET ROSSO GROSSMAN &  
MICHAEL GROSSMAN**

*Endowed Co-sponsors*  
Eight Previous Sponsorships  
Two Current Sponsorships



**JAYNE & RICHARD  
BURKHARDT JR.**

Six Previous Sponsorships  
Two Current Sponsorships



**ANNE MISCHAKOFF HEILES &  
WILLIAM HEILES**

Twenty-nine Previous Sponsorships  
Five Current Sponsorships



**CAROL BERTHOLD**

Twenty-six Previous Sponsorships  
Two Current Sponsorships

\*PHOTO: ILLINI STUDIO



**HARRIET & HERSCHEL CLINE**

Six Previous Sponsorships  
One Current Sponsorship



**JONGIN CRAGGS**

*First-time Sponsor*  
One Current Sponsorship



**SUSAN & MICHAEL HANEY**

Fifty-eight Previous Sponsorships  
Nine Current Sponsorships



**PEGGY & CHRISTOPHER HUSON**

Seventeen Previous Sponsorships  
Three Current Sponsorships



**MARY SCHULER &  
STEPHEN SLIGAR**

Nineteen Previous Sponsorships  
Two Current Sponsorships

---

# ARTIST'S STATEMENT

When I was 14, the film *Soylent Green* was released, a sci-fi thriller about a dystopian future of worldwide pollution, dying oceans, depleted resources, and rampant starvation. The story was set in the year 2022.

The movie has faded from memory, but one scene left a profound impression. An aged researcher, unable to go on, has chosen assisted suicide at a government clinic. To ease his last moments of life, he is shown videos of a world that no longer exists: flowers and savannahs, flocks and herds, unpolluted skies and waters, all set to a soundtrack of classical music by Tchaikovsky, Beethoven, and Grieg.

This scene captured my imagination in a terrifying way. The impact increased when I later learned that the actor playing the researcher, Edward G. Robinson, was terminally ill at the time it was filmed.

Fast forward to the pandemic. After more than two decades of constant touring, usually to urban cultural centers, performances abruptly ceased, and I suddenly found myself at home. I sought comfort in long walks outside near my house. I needed this time outdoors to maintain my emotional equilibrium, and I was reminded that nature would always be my touchstone. At the same time, the news about climate change grew more alarming: the extinction of animals we took for granted when we were children, the knowledge that white rhinos had disappeared from the wild, and daily reports of heat, fires, and flooding. I realized that the crisis we had been warned of for so long had arrived.

I thought of the great legacy of song literature that I love, when Romantic-era poets and composers reveled in imagery of nature,

finding reflections of human experience in the environment. I decided to record some of this music, and to juxtapose these classics with the voices of living composers, addressing our current, troubled relationship with the natural world.

The result, in collaboration with my friend Yannick Nézet-Séguin, was the album *Voice of Nature: the Anthropocene*. When it received the 2023 Grammy Award for Best Classical Solo Vocal Album, I was thrilled, and I had the idea to tour music addressing this theme of nature as both our inspiration and our victim.

I was incredibly fortunate to connect with the imaginative, dedicated leadership at the National Geographic Society, the global non-profit committed to exploring, illuminating, and protecting the wonder of our world. It has been so exciting to work with this universally respected, landmark institution. I am deeply grateful for the help of President and Chief Operating Officer Michael Ulica, Chief Executive Officer Jill Tiefenthaler, and Producer/Editor Sam Deleon, whose expertise and vision have been instrumental in creating the video you will see in the first half of tonight's program.

Thankfully, the stunning natural world depicted in this film still exists, unlike that movie scene so upsetting to my younger self. In blending these beautiful images with music, my hope is, in some small way, to rekindle your appreciation of nature, and encourage any efforts you can make to protect the planet we share.

Sincerely,  
*Renée Fleming*

---

# TEXTS AND TRANSLATIONS

## HAZEL DICKENS

"Pretty Bird"

Fly away, little pretty bird  
Fly, fly away  
Fly away, little pretty bird  
And pretty you'll always stay  
I see in your eyes a promise  
Your own tender love you'll bring  
But fly away, little pretty bird  
Cold runneth the spring

## GEORG FRIDERIC HANDEL

"Care Selve" from *Atalanta*

*Care selve, ombre beate,  
vengo in traccia del mio cor!*

Beloved forests, joyous shadows:  
I come in search of my heart.

## NICO MUHLY

"Endless Space"

(Robinson Meyer and Thomas Traheme, lyrics)

One of the great things about Earth as an image  
is that . . . it's too much.  
It helps me to think about how we share the planet,  
and the fact that it's always half day  
and it's always half night.  
Your midnight is someone else's noon.  
It doesn't work in language:  
I try to talk about it, and it comes out as clichés.  
But this is seeing it.  
Prompted to seek my Bliss above the Skies,  
How often did I lift mine Eyes  
Beyond the Spheres!  
Dame Nature told me there was endless Space  
Within my Soul; I spy'd its very face:  
Sure it not for nought appears.  
What is there which a Man may see  
Beyond the Spheres?  
Felicity.

Whether the emergencies of the coming century  
arrive in the form of fires, or floods, or plagues  
that rise invisibly from the ground  
They're likely to become more and more extreme  
and less and less familiar.

Even in its quietest places,  
the world will become newly hostile.  
No empty Space: it is all full of Sight  
All Soul and Life, an Eye most bright,  
All Light and Love,

Which doth at once all things possess and give,  
Heaven and Earth, and All that therein live;  
It rests as quiet, and doth move;  
Eternal is, yet Time includes;  
A scene above  
all Interludes.

One of the great things about Earth as an image  
is that... it's too much.  
But this is seeing it.

### **JOSEPH CANTELOUBE**

"Baïlèro" from *Chants d'Auvergne*

Pastré, dè dèlaï l'aïo, as gairé dé boun tèms?  
Dio lou baïlèro lèro, lèro, lèro, lèro, baïlèro, lô!  
È n'aï pa gaïre, è dio, tu?  
Baïlèro lèro, lèro, lèro, lèro, baïlèro, lô!  
Pastré, couci foraï, en obal io lou bel riou!  
Dio lou baïlèro lèro, lèro, lèro, lèro, baïlèro, lô!  
Es pèromè, té baô çirca!  
Baïlèro lèro, lèro, lèro, lèro, baïlèro, lô!

"Baïlèro" from *Songs of the Auvergne*

Shepherd across the river, you don't seem to be afraid,  
sing the Bailero, etc.  
Indeed I'm not, and you too,  
sing the Bailero, etc.  
Shepherd, the stream separates us, and I can't cross it,  
sing the Bailero, etc.  
Then I'll come and get you further down,  
Bailero, etc.

### **MARIA SCHNEIDER**

"Our Finch Feeder" from *Winter Morning Walks*  
(Ted Kooser, text)

Our finch feeder, full of thistle seed  
oily and black as ammunition, swings wildly in the wind  
and the finches in olive drab like little commandos  
cling to the perches, cling to the perches,  
six birds at a time, ignoring the difficult ride.



## BJÖRK

“All Is Full of Love”

You'll be given love  
You'll be taken care of  
You'll be given love  
You have to trust it  
Maybe not from the sources  
You have poured yours  
Maybe not from the directions  
You are staring at  
Twist your head around  
It's all around you  
All is full of love  
All around you  
All is full of love  
You just ain't receiving  
All is full of love  
Your phone is off the hook  
All is full of love  
Your doors are all shut  
All is full of love

## HOWARD SHORE

“Twilight and Shadow” from *The Lord of the Rings*  
(Phillipa Boyens, lyrics, based on text by J. R. R. Tolkien)

Ngil nin el nel  
Naun el kree ú a mae  
Ú el me Síli mae  
Nin fi li na lo me le ne Menel audial  
Dúr i fuin i vah mae  
Ngil nin el nel  
Du Gli li mae  
Ngil fi el me i  
Dúr fu Nae mae  
An i lu na cu  
An i naun lui  
A na naun annen  
Annen ne perónen A

I saw a star rise high in the  
Evening sky,  
It hung like a jewel,  
Softly shining.  
I saw a star fade in the  
Evening sky,  
The dark was too deep and so light died,  
Softly pining.  
For what might have been,  
For what never was.  
For a life, long lived  
For a love half given

## KEVIN PUTS

"Evening"

(Dorianne Laux, lyrics)

Moonlight pours down  
without mercy, no matter  
how many have perished  
beneath the trees.

The river rolls on.

There will always be  
silence, no matter  
how long someone  
has wept against  
the side of a house,  
bare forearms pressed  
to the shingles.

Everything ends.

Even pain, even sorrow.

The swans drift on.

Reeds bear the weight  
of their feathery heads.

Pebbles grow smaller,  
smoother beneath night's  
rough currents. We walk  
long distances, carting  
our bags, our packages.

Burdens or gifts.

We know the land  
is disappearing beneath  
the sea, islands swallowed  
like prehistoric fish.

We know we are doomed,  
done for, damned, and still  
the light reaches us, falls  
on our shoulders even now,  
even here where the moon is  
hidden from us, even though  
the stars are so far away.

**BURT BACHARACH**

“What the World Needs Now”

(Hal David, lyrics)

What the world needs now is love, sweet love  
 It's the only thing that there's just too little of  
 What the world needs now is love, sweet love  
 No not just for some, but for everyone  
 Lord, we don't need another mountain  
 There are mountains and hillsides enough to climb  
 There are oceans and rivers enough to cross  
 Enough to last 'til the end of time  
 What the world needs now is love, sweet love  
 It's the only thing that there's just too little of  
 What the world needs now is love, sweet love  
 No, not just for some, but for everyone  
 Lord, we don't need another meadow  
 There are cornfields and wheatfields enough to grow  
 There are sunbeams and moonbeams enough to shine  
 Oh listen, Lord, if you want to know  
 What the world needs now is love, sweet love  
 It's the only thing that there's just too little of  
 What the world needs now is love, sweet love  
 No, not just for some, oh, but just for every, every, everyone

**REYNALDO HAHN**

“L'heure exquise”

La lune blanche  
 Luit dans les bois.  
 De chaque branche  
 Part une voix  
 Sous la ramée.  
 Ô bien-aimée . . .

L'étang reflète  
 Profond miroir,  
 La silhouette  
 Du saule noir  
 Où le vent pleure.  
 Rêvons, c'est l'heure.

Un vaste et tendre  
 Apaisement

The exquisite hour

The white moon  
 Glimmers in the woods;  
 From each branch  
 A voice sounds  
 Beneath the canopy . . .  
 O my beloved.

The pond reflects,  
 Deep mirror,  
 The silhouette  
 Of the black willow  
 Where the wind weeps . . .  
 Let us dream, it is the hour.

A vast and tender  
 Solace

Semble descendre  
Du firmament  
Que l'astre irise.  
C'est l'heure exquise!

"Si mes vers avaient des ailes"  
(Poet: Victor Hugo)]

Mes vers fuiraient, doux et frêles,  
Vers votre jardin si beau,  
Si mes vers avaient des ailes,  
Comme l'oiseau.

Ils voleraient, étincelles,  
Vers votre foyer qui rit,  
Si mes vers avaient des ailes,  
Comme l'esprit.

Près de vous, purs et fidèles,  
Ils accourraient nuit et jour,  
Si mes vers avaient des ailes,  
Comme l'amour.

### **THÉODORE DE BANVILLE**

"Les Etoiles"

Les cieux resplendissants d'Étoiles  
Aux radieux frissonnements,  
Ressemblent à des flots dormants  
Que sillonnent de blanches voiles.

Quand l'azur déchire ses voiles,  
Nous voyons les bleus firmaments,  
Les cieux resplendissant d'Étoiles,  
Aux radieux frissonnements.

Quel peintre mettra sur ses toiles,  
O dieu! leurs clairs fourmillements,  
Ces fournaises de diamants  
Qu'à nos yeux ravis tu dévoiles,  
Les cieux resplendissants d'Étoiles?

Seems to descend  
From the heavens  
The iridescent moon shines . . .  
It is the exquisite hour!

"If my verses had wings"  
(translation © Richard Stokes)

My verses would flee, sweet and frail,  
To your garden so fair,  
If my verses had wings,  
Like a bird.

They would fly, like sparks,  
To your smiling hearth,  
If my verses had wings,  
Like the mind.

Pure and faithful, to your side  
They'd hasten night and day,  
If my verses had wings,  
Like love!

The Stars

The skies resplendent with stars  
Shimmering with radiance,  
Resemble sleeping waves  
Furrowed by white sails.

When the sky tears its veils,  
We see the blue firmament,  
The skies resplendent with stars  
Shimmering with radiance.

What painter will put on his canvases,  
O god! their bright glittering,  
These furnaces of diamonds  
Revealed to our delighted eyes,  
The skies resplendent with stars?

## RUGGERO LEONCAVALLO

"Musette svaraia sulla bocca viva" from *La bohème*

Musette svaraia sulla bocca viva  
le canzonette belle:  
rompe la voce come da sorgiva  
per mille fontanelle.  
Canta i vent'anni e al fresco tintinnire  
il piè muove alla danza;  
la scorge Amor dall'ultimo gioire  
alla nuova speranza.  
Brilla ne l'ombra dei suoi lunghi cigli  
un riso civettuolo;  
e i desideri con aperti artigli  
levante intorno il volo!  
Ah! Ella consente, nega e rinnamora  
come le parli il core:  
non vezzi ed ori seguita:  
ella adora un tesoro -  
l'amor!

The sweetest of songs  
are on Musette's lips:  
her voice flows as if from a spring  
into a thousand little fountains.  
She sings of youth and the silvery sound  
invites everyone to dance;  
Love leads her from her latest delight  
toward a new hope.  
In the shadow of her long eyelashes  
there sparkles a flirtatious laugh;  
and desires with talons showing  
take flight around her!  
Ah! She yields, rejects and loves again  
according to her heart's desire:  
charms and wealth mean nothing to her:  
there's only one treasure she adores—  
love!

## FRANCESCO CILEA

"Io son l'umile ancella" from *Adriana Lecouvreur*  
Libretto by Arturo Colautti

Ecco: respire appena. . . .  
Io son l'umile ancella  
del Genio creator;  
ei m'offre la favella,  
io la diffondo ai cor.  
Del verso io son l'accento,  
l'eco del drama uman,  
il fragile strumento  
vassallo della man.  
Mite, gioconda, atroce,  
mi chiamo Fedeltà:  
un soffio è la mia voce,  
che la novo di morrà

See, I can scarcely breath. . . .  
I am the humble maidservant  
of the creative spirit;  
he offers me the words  
and I make them known to people's hearts.  
I give the verses their stress  
and echo the human drama,  
I am the delicate instrument  
that serves the hand.  
Quiet, happy, terrible;  
my name is Fidelity.  
My voice is but a breath  
which tomorrow will die.

## **JEROME KERN AND OSCAR HAMMERSTEIN II**

### **"All the Things You Are"**

Time and again I've longed for adventure  
Something to make my heart beat the faster  
What did I long for? I never really knew  
Finding your love I've found my adventure  
Touching your hand, my heart beats the faster  
All that I want in all of this world is you  
You are the promised kiss of springtime  
That makes the lonely winter seem long  
You are the breathless hush of evening  
That trembles on the brink of a lovely song  
You are the angel glow that lights a star  
The dearest things I know are what you are  
Some day my happy arms will hold you  
And some day I'll know that moment divine  
When all the things you are, are mine  
You are the angel glow that lights a star  
The dearest things I know are what you are  
Some day my happy arms will hold you  
And some day I'll know that moment divine  
When all the things you are, are mine



**Renée Fleming** is one of the most highly acclaimed singers of our time, performing on the stages of the world's great opera houses and concert halls. A 2023 Kennedy Center Honoree, winner of five Grammy awards and the US National Medal of Arts, she has sung for

momentous occasions from the Nobel Peace Prize ceremony to the Diamond Jubilee for Queen Elizabeth II at Buckingham Palace. A groundbreaking distinction came in 2008 when she became the first woman in the 125-year history of the Metropolitan Opera to solo headline an opening night gala, and in 2014 she became the first classical artist ever to sing the National Anthem at the Super Bowl. In 2023, the World Health Organization appointed her as a Goodwill Ambassador for Arts and Health.

Renée's latest recital and concert program, *Voice of Nature: the Anthropocene*, inspired by her 2023 Grammy-winning album, includes an original film created by the National Geographic Society to reflect the musical selections. In May at the Metropolitan Opera, she reprised her role in *The Hours*, an opera based on the Pulitzer Prize-winning novel and award-winning film. In 2023, she portrayed Pat Nixon in a new production of *Nixon in China* at the Opéra de Paris.

Renée's anthology, *Music and Mind: Harnessing the Arts for Health and Wellness*, was published in 2024. A prominent advocate for research at the intersection of arts, health, and neuroscience, as Artistic Advisor to the Kennedy Center for the Performing Arts, Renée launched the first ongoing collaboration between America's national cultural center and its largest health research institute, the National Institutes of Health. She created her own program called *Music and the Mind*, which

she has presented in more than fifty cities around the world, earning Research!America's Rosenfeld Award for Impact on Public Opinion. In 2020, Renée launched *Music and Mind LIVE*, a weekly web show exploring the connections between arts, human health, and the brain, amassing nearly 700,000 views, from 70 countries. She is now an advisor for major initiatives in this field, including the Sound Health Network at the University of California San Francisco and the NeuroArts Blueprint at Johns Hopkins University.

Renée has recorded everything from complete operas and song recitals to indie rock and jazz. Last year, Decca released a special double-length album of live recordings from Renée's greatest performances at the Metropolitan Opera. In 2023 Renée received the Grammy Award for Best Classical Vocal Solo for her album *Voice of Nature: The Anthropocene*, with Yannick Nézet-Séguin as pianist. Known for bringing new audiences to classical music and opera, Renée has sung not only with Luciano Pavarotti and Andrea Bocelli, but also with Elton John, Paul Simon, Sting, Josh Groban, and Joan Baez. Renée's voice is featured on the soundtracks of Best Picture Oscar winners *The Shape of Water* and *The Lord of the Rings*.

Co-Artistic Director of the Aspen Opera Center and VocalArts at the Aspen Music Festival, Renée is also Advisor for Special Projects at LA Opera. Renée's other awards include the 2023 Crystal Award from the World Economic Forum in Davos, the Fulbright Lifetime Achievement Medal, Germany's Cross of the Order of Merit, Sweden's Polar Music Prize, and honorary doctorates from 10 major universities.

[www.reneefleming.com](http://www.reneefleming.com)



American pianist **Howard Watkins** is a frequent associate of some of the world's leading musicians on the concert stage and as an assistant conductor at the Metropolitan Opera. His appearances throughout the Americas, Europe, Asia, Russia, and Israel have included collaborations with Joyce DiDonato, Diana Damrau, Thomas

Hampson, Kathleen Battle, Grace Bumbry, Mariusz Kwiecien, Anna Netrebko, and Matthew Polenzani at such venues as the Metropolitan Museum of Art, Kennedy Center, the United States Supreme Court, Alice Tully Hall, Carnegie Hall, the Elbphilharmonie, and the Bolshoi Theater. His current and former faculty affiliations include The Juilliard School, the Bard College Conservatory of Music, the Merola Opera Program, the Santa Fe Opera Apprentice Program, the Yale School of Music as a Visiting Presidential Fellow, the Tanglewood Music Center, the Aspen Music Festival, the Mannes School of Music, the North Carolina School of the Arts, the

International Vocal Arts Institute (Israel, Japan, and China), IIVA in Italy, the Brancaleoni Music Festival in Italy, the Tokyo International Vocal Arts Academy (TIVAA), and VOICEexperience in Orlando, Tampa, and Savannah. A native of Dayton, Ohio, Mr. Watkins completed the Doctor of Musical Arts degree in accompanying and chamber music at the University of Michigan. Honored as the 2004 recipient of the Paul C. Boylan award from the University of Michigan for his outstanding contributions to the field of music, he is also the 2019 recipient of the Lift Every Voice Legacy Award from the National Opera Association.



---

## LAND ACKNOWLEDGMENT

The University of Illinois System carries out its mission in its namesake state, which includes the traditional territory of the Peoria, Kaskaskia, Piankashaw, Wea, Miami, Mascoutin, Odawa, Sauk, Mesquaki, Kickapoo, Potawatomi, Ojibwe, Menominee, Ho-Chunk, and Chickasaw Nations. These lands continue to carry the stories of these Nations and their struggles for survival and identity.

As a land-grant institution, the University of Illinois has a particular responsibility to acknowledge the peoples of these lands, as well as the histories of dispossession that have allowed for the growth of this institution. We are also obligated to reflect on and actively address these histories and the role that this university has played in shaping them.

This acknowledgment and the centering of Native peoples is a start as we move forward.

Krannert Center affirms the commitment by the university to move beyond these statements, toward building deeper relationships and taking actions that uphold and preserve Indigenous rights and cultural equity.

As we gather to experience this performance, we have an opportunity to reflect on the ways that systems of oppression have shaped our society. We can work together to create systems that support human dignity, establish equity, strengthen cross-cultural relationships, and draw upon the creative capacity of all people that make up this community, state, nation, and world.



# INVEST IN THE FUTURE OF THE ARTS

Support Krannert Center today



---

## **MAKING IT POSSIBLE**

***Support Krannert Center Today***

### **Where Creativity Ignites Passion**

Krannert Center is committed to providing an inclusive space where students, community members, visiting artists, and friends can gather for enriching performances and cultural experiences. The support of our donors and friends enables the Center to produce creative programming that ignites a passion for the arts that is invaluable.

**Together, we can ensure that students and the greater community continue to have access to transformative performing arts experiences.**

Please consider making a gift to Krannert Center today. With your help, we can sustain the high level of excellence you have come to expect, while strengthening the lasting impact of the Center's work.

You make it possible.

### **Make Your Gift Today**

advancement@krannertcenter.illinois.edu • 217.333.6700

KrannertCenter.com/Give

### **Would you like to make Krannert Center part of your legacy?**

Contact Cheryl Snyder (217.333.2533 | [casnyder@illinois.edu](mailto:casnyder@illinois.edu)) or Bethany Whoric (217.300.6042 | [bbwhoric@illinois.edu](mailto:bbwhoric@illinois.edu)) to learn more about making a planned gift to Krannert Center for the Performing Arts.

# KRANNERT CENTER PHILANTHROPY AND ADVOCACY

Krannert Center's dedication to the celebration, exploration, and cross-pollination of the arts is advanced through these special programs. Donors who champion such work make it possible for more people in our community to participate in life-affirming experiences.

## 2024-2025 ADVANCEMENT COUNCIL

This passionate group of arts advocates assists Krannert Center staff in expanding the Center's leadership and financial resources.

### Co-Chairs:

Michelle Gonzales &  
Shandra Summerville  
Ghazala Ahmad  
Jill Clements  
Terry & Barbara England  
Susan & Michael Haney  
Lisa & Mark Klinger  
Leonard (Len) Lewicki

Marina & Nenad  
Marjanovic  
Susan & Brendan  
McGinty  
Tracy Parsons  
Susan & Sam Reese  
Kathryn King, Sr. Lyric  
Theatre @ Illinois

## 2024-2025 KRANNERT CENTER YOUTH SERIES

The Youth Series features daytime performances, online media created by performing artists, and educational activities designed especially for pre-K through high-school-aged students. Children who participate learn to appreciate the performing arts, gain knowledge, build social skills, and integrate live performance experiences into classroom work. Thank you to our Youth Series sponsors.

Ann H. Bender Youth  
Series Endowment  
The Susan Sargeant  
McDonald Endowed  
Fund for Youth  
Programming (Suzi  
was the founder/  
developer of the  
Krannert Center Youth  
Series)  
Bernard and Prudence  
Spodek Endowed  
Fund

Illinois Arts Council  
National Endowment  
for the Arts  
Judith Bojar  
Susan & Michael Haney  
Brenda & Stephen Pacey  
Jill & James Quisenberry  
Linda & Ronald Roaks  
Carol & Ed Scharlau  
Jane & Christian Scherer  
Anne & David Sharpe

## 2024-2025 CAMPAIGN FOR YOUNG AUDIENCES

Through the Campaign for Young Audiences, students at the U of I enjoy \$10 tickets for nearly every event presented at Krannert Center while other college students and children receive significant discounts.

### Campaign for Young Audiences Lead Sponsors



Phyllis Robeson & Family

### Campaign for Young Audiences Sponsors

Susan & Michael Haney  
Fund for Young  
Audiences  
Gertrude Brokaw  
McCloy Endowment

Clarette & Zvi Ritz  
UpClose Marketing  
and Printing

## 2024-2025 SEASON-LONG SPONSOR

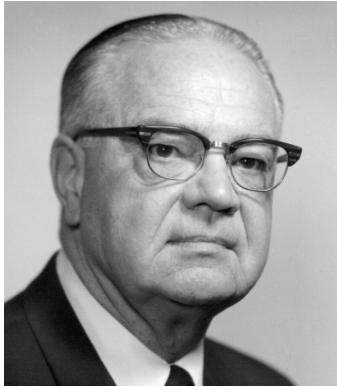


A. Mark Neuman  
*80 years ago, in 1945, members  
of the United States Armed  
Forces liberated my father, Rab-  
bi Isaac Neuman, from Ebensee,  
Austria.  
If US soldiers had not been  
there, I would not be here.*

**If you'd like to learn how you can become a sponsor, please contact Krannert Center Advancement at 217.333.6700 or [advancement@krannertcenter.illinois.edu](mailto:advancement@krannertcenter.illinois.edu).**

## KRANNERT SOCIETY

The University of Illinois, the College of Fine and Applied Arts, and Krannert Center are profoundly grateful for the commitment of Krannert Society members. Through donations, pledges, and residual gifts of \$1 million or more, these open-hearted visionaries help build a thriving community and encourage cross-cultural understanding. Their support sustains the extraordinary vision of Herman and Ellnora Krannert to create a vibrant gathering place like no other.



**VALENTINE JOBST III** (1904-1993)  
March 1994



**CLAIR MAE ARENDS** (1912-2000)  
**G. WILLIAM ARENDS** (1914-1997)  
March 2000



**MARILYN PFLEDERER ZIMMERMAN**  
(1929-1995)  
**VERNON K. ZIMMERMAN**  
(1928-1996)  
November 2003



**HELEN FARMER**  
**JAMES FARMER** (1931-2020)  
April 2014

## FOELLINGER SOCIETY

Demonstrating their steadfast dedication to the arts, members of the Foellinger Society have donated or pledged \$500,000 to \$999,999. Because of their generosity, everyone in this community can unite in joyful and engaging experiences. These magnanimous arts lovers celebrate the spirit of Helene Foellinger, whose memorial gift honored her sister, Loretta Foellinger Teeple, and established the Marquee Performance Endowment.



**AVIS HILFINGER (1915-2004)**  
**DEAN HILFINGER (1912-2006)**  
April 2000



**KENNETH ANDERSEN (1933-2020)**  
**MARY ANDERSEN**  
August 2009



**CAROLYN G. BURRELL**  
April 2012



**CAROLE & JERRY RINGER**  
April 2014



**EDITH ANN STOTLER**  
(1946-2022)  
August 2017



**K. SARAH SPAULDING**  
(1930-2022)  
Feb 2017



**JANE BUFORD SCHERER & CHRIS  
SCHERER**  
June 2022



**DENA & JIM VERMETTE**  
June 2022



**HOWARD "CHIP" WALGREN  
DONALD LEE ALLEN**  
March 2024



**LEONARD (LEN) LEWICKI**  
August 2024

## **IKENBERRY SOCIETY**

University of Illinois President Emeritus and First Lady Stan and Judy Ikenberry have long demonstrated their love for the arts and their deep commitment to enhancing learning experiences for all University of Illinois students. Krannert Center gratefully acknowledges their steadfast support by introducing the Ikenberry Society to recognize donated gifts or pledges of \$250,000 to \$499,999.



**JUDITH & STANLEY IKENBERRY**  
September 2014



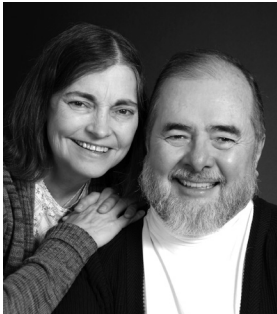
**JERALD WRAY & DIRK MOL**  
March 2016



**DAVID A. KROOKS**  
August 2016



**HELEN RICHARDS**  
(1936-2023)  
**DANIEL RICHARDS**  
June 2016



**HOLLY & KURT HIRCHERT**  
February 2017



**ANONYMOUS**  
May 2018



**JOAN & PETER HOOD**  
November 2018



**SUSAN & MICHAEL HANEY**  
April 2019





**LYNN WEISEL WACHTEL  
& IRA WACHTEL**  
June 2019



**JOHN & KAY SHANER**  
July 2019



**TIMOTHY TEMPLE & JERRY  
CARDEN**  
June 2022



**FRAN & MARC ANSEL**  
June 2022



**TRENT A. SHEPARD**  
September 2023



**DALE STEFFENSEN**  
(1922-2018)  
**MARGARET  
STEFFENSEN**  
(1936-2024)  
August 2024

## COLWELL SOCIETY

Dr. John B. Colwell, Pauline Groves Colwell, and R. Forrest Colwell provided critical funding for the Marquee Performance Endowment, and the Colwell Society gratefully acknowledges their invaluable assistance. Members have donated or pledged \$100,000 to \$249,999 for celebrating, preserving, and exploring the arts right here and around the globe.



**DOLORIS DWYER**  
(1918-1997)  
April 1996



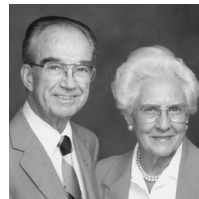
**EMILY GILLESPIE**  
(1909-2000)  
**JAMES GILLESPIE**  
(1905-1999)  
December 1996



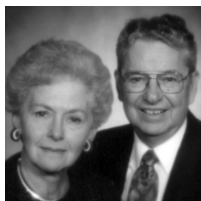
**ROSANN NOEL**  
(1932-2018)  
**RICHARD NOEL**  
April 1997



**JAMES W. ARMSEY**  
(1917-2008)  
**BETH L. ARMSEY**  
(1918-2019)  
February 1998



**LOIS KENT**  
(1912-1999)  
**LOUIS KENT**  
(1914-1994)  
October 2000



**JUNE SEITZINGER**  
(1928-2020)  
**GROVER SEITZINGER**  
(1925-2019)  
September 2001



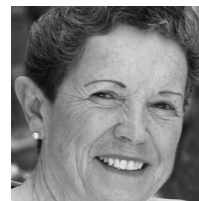
**RICHARD MERRITT**  
(1933-2005)  
**ANNA MERRITT**  
November 2006



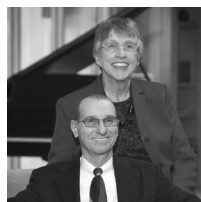
**JOHN PFEFFER**  
(1935-2017)  
**ALICE PFEFFER**  
November 2006



**ANONYMOUS**  
November 2006



**LINDA M. MILLS**  
(1940-2006)  
October 2007



**JUDITH LIEBMAN**  
(1936-2023)  
**JON LIEBMAN**  
January 2008



**MICHAEL CARRAGHER**  
(1946-2009)  
September 2008



**VIRGINIA R. IVENS**  
(1922-2008)  
February 2009

**THE SUSAN SARGEANT MCDONALD ENDOWED FUND FOR YOUTH PROGRAMMING**  
Suzi was the founder/ developer of the Krannert Center Youth Series  
July 2010



**MISAHO & RICHARD BERLIN**  
October 2010



**DIANA & WARD  
MCDONALD**  
March 2011



**GRACE & JOHN  
MICETICH**  
March 2011



**JO ANN TRISLER**  
(1946-2010)  
November 2011



**LEA GIESELMAN**  
(1932-2014)  
**BOB GIESELMAN**  
(1932-2015)  
April 2013



**JULIE & NATHAN  
GUNN**  
April 2014



**MICHAEL SWINDLE**  
April 2014



**ANONYMOUS**  
November 2015



**LINDA WEINER**  
(1944-2021)  
**BARRY WEINER**  
February 2017



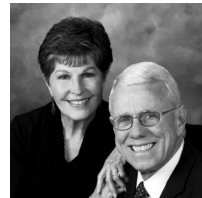
**ANNE MISCHAKOFF  
HEILES & WILLIAM  
HEILES**  
May 2017



**JILL & JAMES  
QUISENBERRY**  
May 2017



**CECILE & IRA  
LEBENSTON**  
December 2017



**BURT SWANSON**  
(1939-2020)  
**IRIS SWANSON**  
December 2017



**TERRY & BARBARA  
ENGLAND**  
April 2018



**PHYLLIS ROBESON  
& FAMILY**  
February 2019  
**KYLE ROBESON**  
(1929-2021)



**JAMES R. FRAME  
& CANDACE PENN  
FRAME**  
April 2019



**MICHAEL &  
MARGARET ROSSO  
GROSSMAN**  
July 2019



**PATRICIA & ALLAN  
TUCHMAN**  
April 2021



**VICTOR FELDMAN**  
(1935-2018)  
**JUDITH FELDMAN**  
(1938-2021)  
September 2021



**SUSAN & RICHARD  
SCHNUER**  
November 2021



**JUDITH & RICHARD  
KAPLAN**  
February 2022



**KATHRYN I. SEYBERT  
& MICHAEL J.  
ANDRECHAK**  
June 2022



**PATRICIA PLAUT &  
KENNETH SUSLICK**  
October 2022



**RICHARD & JAYNE  
BURKHARDT**  
January 2023



**SELMA K. RICHARDSON**  
(1931-2019)  
March 2023



**WILLIAM K. ARCHER**  
(1927-1997)  
**FOROUGH ARCHER**  
July 2023



**KENNETH BENGOCHEA**  
(1937-2022)  
**NANCY L. JOHNSON**  
September 2023

---

*Donations by society members include estate gifts; outright donations; charitable gift annuities; charitable remainder trusts; gifts of real estate, insurance, and securities; and pledges fulfilled over a period of five years. To explore how you can create your own lasting legacy, contact us at 217.333.6700 or [advancement@krannertcenter.illinois.edu](mailto:advancement@krannertcenter.illinois.edu).*

## 2024-2025 MARQUEE CORPORATE & COMMUNITY SPONSORS

Corporate and community support—both cash and in-kind—deepens Krannert Center’s capacity to inspire public discourse, communal respect, and collective joy. Please join Krannert Center in thanking the following corporate and community sponsors for their support of Krannert Center performances and initiatives.

---

### Corporate & Community Platinum Sponsors

(\$30,000 OR MORE)



HOTEL



ILLINOIS  
CONFERENCE CENTER



SURFACE 51

---

**Corporate & Community Lead Gold Sponsors**

(\$20,000-\$29,999)



---

**Corporate & Community Gold Sponsors**

(\$10,000-\$19,999)



---

**Corporate & Community Silver Sponsors**

(\$5,000-\$9,999)

Adams Outdoor Advertising  
Chambanamoms  
Champaign-Urbana Mass Transit District (MTD)

Christie Clinic  
Kessler Optical  
Smile Politely

---

**Corporate & Community Bronze Sponsors**

(\$2,500-\$4,999)

BodyWork Associates  
Carter's Furniture  
Comfort Suites  
Experience Champaign-Urbana

Glenn Poor's Audio & Video  
Illini Studio  
The Piano Shop  
WEFT 90.1 FM  
Willard Airport

---

**TO JOIN THIS POWERFUL NETWORK** of like-minded professionals while receiving guaranteed visibility and marketing benefits, visit [KrannertCenter.com/Give](http://KrannertCenter.com/Give) or contact Bethany Whoric at 217.300.6042 or [bbwhoric@illinois.edu](mailto:bbwhoric@illinois.edu).

---

# 2024-2025 GRANTS



DORIS DUKE  
CHARITABLE FOUNDATION

## DORIS DUKE CHARITABLE FOUNDATION

Endowment support from the Doris Duke Charitable Foundation continues to enhance Krannert Center's presentation of diverse, world-class national and international visiting artistry; supporting the creation of new work; and increasing engagement and collaboration across campus.



## ILLINOIS ARTS COUNCIL

The Illinois Arts Council Agency provides general programming support to ensure that audiences of all ages have direct access to world-class theatre, dance, and music.

## THE AUGUSTINE FOUNDATION

### THE AUGUSTINE FOUNDATION

The Augustine Foundation provides continued major support for ELLNORA | The Guitar Festival.



THIS PROJECT FUNDED BY  
STUDENT SUSTAINABILITY COMMITTEE

## THE STUDENT SUSTAINABILITY COMMITTEE

The Student Sustainability Committee provided funding for the Krannert Center Audiences Lighting Retrofit Project, which continues to increase energy efficiency, decrease labor requirements, and improve safety conditions.



## GEORGE A. MILLER ENDOWMENT PROGRAMS COMMITTEE

The George A. Miller Endowment Programs Committee supports CultureTalk and other special collaborative projects.

## MARQUEE PATRON SPONSORS

Krannert Center is grateful for the passion and commitment of the following individuals whose gifts support the expansive range of experiences offered at Krannert Center: formative moments for tomorrow's global leaders, performances that comfort and transform, opportunities to create and enjoy groundbreaking work, engagement activities that offer self-discovery and hope, architectural treasures to delight the senses, and remarkable moments to foster lifelong memories. **If you'd like to learn more about how to become a sponsor, please contact Krannert Center Advancement at 217.333.6700 or [advancement@krannertcenter.illinois.edu](mailto:advancement@krannertcenter.illinois.edu).**

### Season-Long Patron Sponsor

(\$25,000 OR MORE PER SEASON)

A. Mark Neuman  
Anonymous

---

### Endowed Underwriters

(\$10,000 OR MORE PER EVENT)

Clair Mae & G. William Arends  
Avis & Dean Hilfinger  
Valentine Jobst III  
Edith Ann Stotler  
Marilyn Pflederer & Vernon K. Zimmerman

---

### Endowed Sponsors

(\$5,000-\$9,999 PER EVENT)

Beth & James Armsey  
Doloris Dwyer  
Terry & Barbara England  
Joan & Peter Hood  
Lois & Louis Kent  
Carole & Jerry Ringer  
Trent A. Shepard  
Sarah K. Spaulding  
Bernard and Prudence Spodek Endowed Fund

---

### Endowed Co-sponsors

(\$2,500-\$4,999 PER EVENT)

Ann H. Bender Youth Series Endowment  
Victor & Judith Feldman  
Lena & Bob Gieselman  
Emily & James Gillespie  
Margaret Rosso Grossman & Michael Grossman  
Susan & Michael Haney  
The Susan & Michael Haney Fund for Young Audiences

Virginia R. Ivens  
Kathryn & Stephen Marshak  
The Susan Sargeant McDonald Endowed Fund for Youth Programming (Suzi was the founder/developer of the Krannert Center Youth Series)

Joanne & Charles McIntyre  
Anna Merritt  
Mildred Maddox Rose  
June & Grover Seitzinger  
Jo Ann Trisler  
Pat & Allan Tuchman

---

### Patron Underwriters

(\$10,000 OR MORE PER EVENT)

Jayne & Richard Burkhardt Jr.  
Carol & Willis Colburn

---

### Patron Sponsors

(\$5,000-\$9,999 PER EVENT)

Anonymous  
Channing Brown  
Jayne & Richard Burkhardt Jr.  
Dixie & Evan Dickens  
Anastasia Economy  
Shirley Soo & Matthew Gorman  
Anne Mischakoff Heiles & William Heiles  
Marilyn & Don Krummel  
Cecile & Ira Lebonson  
Jon Liebman  
Carole & Jerry Ringer  
Carol & Ed Scharlau  
Patricia Plaut & Kenneth Suslick

Iris Swanson  
Shirley & Arthur Traugott  
Pamela & Michael VanBlaricum  
Barry Weiner  
Susan & Robert Welke  
Karen & William Wilkinson

---

### Patron Co-sponsors

(\$2,500-\$4,999 PER EVENT)

Ghazala Ahmad  
Anonymous  
Frances & Marc Ansel  
Dianna Armstrong  
Sherry & Nelson Beck  
Carol Berthold  
Marsha Clinard & Charles Boast  
Carolyn Burrell  
Ann & Roy Campbell  
Timothy Temple & Jerry Carden  
Beth & David Chasco  
Harriet & Herschel Cline  
Jongin Craggs  
Emmie Fisher  
Melanie Loots & George Gollin  
Shirley Soo & Matthew Gorman  
Diane Gottheil  
Susan & Michael Haney  
Anne Mischakoff Heiles & William Heiles  
Cheryl Hughes  
Peggy & Christopher Huson  
Marianne Kalinke  
Judith & Richard Kaplan  
Leonard (Len) Lewicki  
Ann & Stephen Long

Gigi & Frank Miles  
Martha & Thom Moore  
Jerald Wray & Dirk Mol Deb & Ty Newell  
Claudia Reich & Gary Olsen  
Brenda & Stephen Pacey  
Jill & James Quisenberry  
Karen & Michael Retzer  
Linda & Ronald Roaks  
Julia & Gene Robinson  
Deborah & Stephen Rugg  
Richard & Susan Schnuer  
Carol & Ed Scharlau  
Anne & David Sharpe  
Diana Sheets  
Mary Schuler & Stephen Sligar  
Nancy & Edward Tepper  
Pat & Allan Tuchman  
Hana & David Wickersheimer  
Rebecca & Paul Wigley  
Sarah Wigley  
Sarah & Charles Wisseman

---

### HELP ENSURE THE IMPACT OF THE ARTS

for future generations by becoming a donor today. Visit [KrannertCenter.com/Give](http://KrannertCenter.com/Give), contact us at 217.333.6700 or [advancement@krannertcenter.illinois.edu](mailto:advancement@krannertcenter.illinois.edu).



## MARQUEE CIRCLE AND LOOP MEMBERS

We gratefully acknowledge these individuals and businesses for their generosity and commitment to the arts. Their support enabled the Center to welcome back in-person audiences for Music, Theatre, Dance, and visiting artist productions this past season. Krannert Center continues to make accessibility improvements, co-commission works to help support artist partners, and focus on engagement work within the community. If your membership has lapsed and you'd like to renew, please contact Krannert Center Advancement at 217.333.6700 or [advancement@krannertcenter.illinois.edu](mailto:advancement@krannertcenter.illinois.edu).

[LIST CURRENT AS OF AUGUST 15, 2024]



Ghazala Ahmad  
Melissa Huff & Richard Alkire\*  
Walter Alspaugh  
Nadja & Carl Altstetter  
Mary & Kenneth Andersen\*  
Ruth & James Anderson  
Sally Anderson  
Jean Manning & Alan Andreasen  
Kathryn Seybert & Michael  
Andrechak  
Frances & Marc Ansel\*  
Dianna Armstrong\*  
Barbara E. Barnes  
Paula & Clifford Barnes  
Tangül & Tamer Basar  
Jeanette & John Beck  
Sherry & Nelson Beck  
Carol & Carl Belber  
Dorothy Bell  
Erica & Alessandro Bellina  
Carol Berthold  
Doug Blair  
Mary Blair  
Marsha Clinard & Charles Boast  
Arlene & James Borbely  
Amy Mueller & James Brennan  
Lois & Jack Brodsky by Daniel  
Brodsky  
Abbie & Mike Broga  
Channing Brown  
Elizabeth & Michael Brunk  
Annette & John Buckmaster  
Jayne & Richard Burkhardt Jr.  
Carolyn G. Burrell

Ann & Roy Campbell  
Timothy Temple & Jerry Carden  
Beth & David Chasco  
Kathleen & Felix Cimasky  
Carol & John Clavadetscher  
Harriet & Herschel Cline  
Carol & Willis Colburn  
Casey Sutherland & Linda  
Coleman  
Tina & John Colombo  
Jongin Craggs  
Deborah Day  
Judith & Jack DeAtley  
Elizabeth Cardman & Paul  
Debevec  
Nancy Dehmlow  
Richard DeLong  
Dixie & Evan Dickens\*  
Anastasia Economy  
Matthew Nelson & Kim Eilts  
Ann Einhorn  
Lorene & Paul Ellinger  
Anne Ellison  
Jo & Thomas Emerson  
Terry & Barbara England\*  
Karen & Michael Folk  
Sue Anne Fischer  
Jill & Rusty Freeland  
Beverly & Michael Friese  
Michael Fuerst  
Nancy & Bert Fuller  
Michael Hughes & Dr. Marty Fung  
Rita Garman  
Victoria Christensen & Gary  
Gladding  
Melanie Loots & George Gollin\*  
Shirley Soo & Matthew Gorman  
Diane Gottheil  
Ondine & George Gross

Margaret Rosso Grossman &  
Michael Grossman  
Julie & Nathan Gunn  
Susan & Michael Haney  
Sharon & Terence Harkness  
Kathlene & Ron Harshman  
Gözen & Chris Hartman\*  
Melissa & Peter Hartman  
Kathleen Harvey  
Clare & Alan Haussermann  
Jane Trishman Heaton  
Barbara & John Hecker  
Anne Mischakoff Heiles & William  
Heiles  
Jan & Bruce Hinely  
Bernadine & Charles Hines  
Holly & Kurt Hirschert  
Kathryn Rybka & Darrell  
Hoemann Photography  
Janice Bahr & Erwin Hoffman  
Joan & Peter Hood\*  
Cheryl Hughes  
Mary-Alayne & Robert Hughes  
Peggy & Christopher Huson  
Ingrid & Bruce Hutchings  
Judith & Stanley Ikenberry\*  
Laura & Gale Jamison  
Michelle Sanden Johlas & John  
Johlas  
Nancy Johnson  
Ronald Johnson  
Joan Volkmann & John Jones  
Patricia Jurgens  
Patricia & Peter Kale  
Maxine Kaler  
Marianne Kalinke  
Judith & Richard Kaplan  
Paula Kaufman  
Therese & Lawrence Kessler

Josephine & Douglas Kibbee  
Brenda & Peter Kimble  
Jennifer Durham King & Roy King  
Lisa & Mark Klinger  
Sharon Pomerantz & Howard  
Korey  
Wynne Sandra Korr  
Sheila & Philip Krein  
David A. Krooks  
Marilyn & Don Krummel  
Nancy Parker & James Kuklinski  
Cecile & Ira Lebonson\*  
Brenda Lerner-Berg  
Leonard (Len) Lewicki  
Jon Liebman  
Ann & Stephen Long  
Brenda & Morgan Lynge  
Marina & Nenad Marjanovic  
Kathryn & Stephen Marshak  
Marilyn Marshall  
Betsy Bachmann & Rebecca  
McBride  
Erica McClure  
Susan & Brendan McGinty  
Charles J. & Joanne J. McIntyre  
by Family  
Mrs. Jack H. McKenzie  
Anna Merritt\*  
Grace & John Micetich  
Theresa & Bruce Michelson  
Gigi & Frank Miles  
Elizabeth & George Miley  
Sallie & Norman Miller  
Jerald Wray & Dirk Mol\*  
Martha & Thom Moore\*  
Armine & Rudolf Mortimer  
Jane & Walter Myers  
Janet & Douglas Nelson\*  
Lubitsa Nenadov  
A. Mark Neuman  
Ty & Deb Newell  
Richard Noel  
Jeanette Nugen  
Wilma & William O'Brient  
Claudia Reich & Gary Olsen\*  
Brenda & Stephen Pacey  
Jean Paley

Donald Perrero  
Dr. Jan Marie Aramini & Michael  
Pettersen  
Alice Pfeffer\*  
Kathleen A. Holden & David  
Prochaska  
Jill & James Quisenberry\*  
Gloria Rainer  
Arlene & Julian Rappaport  
Susan & Sam Reese  
Karen & Michael Retzer  
Connie Rieken  
Marlyn Rinehart  
Carole & Jerry Ringer\*  
Clarette Ritz  
Linda & Ronald Roaks  
Phyllis Robeson  
Lisa & Eric Robeson  
Anne Robin  
Julia & Gene Robinson  
Taya & Mike Ross  
Deborah & Brian Ruddell  
Deborah & Stephen Rugg\*  
Shozo Sato  
Carol & Ed Scharlau\*  
Jane & Christian Scherer  
Susan & Richard Schnuer  
Kim Robeson-Schwenk & Dean  
Schwenk\*  
Susan & Ronald Serfoss  
Kay & John Shaner  
Anne & David Sharpe  
Diana Sheets  
Trent Shepard  
Janice Sherbert  
Jan & David Sholem  
Diane & Richard Siemer  
Birute & Vaidotas Simaitis  
Patricia & Charles Simpson  
Mary Schuler & Stephen Sligar  
Audrey Ishii & Charles Smyth  
Prudence Spodek  
Cecile Steinberg  
Margaret Stillwell  
Sheila Sullivan  
Patricia Plaut & Kenneth Suslick  
Iris Swanson

Michelle & Jason Swearingen  
Bonnie & Bob Switzer  
Nancy & Edward Tepper  
Shirley & Arthur Traugott\*  
Masha & Brent Trenhaile  
Carolyn Casady-Trimble & Ralph  
Trimble  
Devon Hague & Dallas Trinkle  
Pat & Allan Tuchman\*  
Carl L. Vacketta  
Pamela & Michael VanBlaricum  
Stella B. & C. Max Volk  
Lynn Weisel Wachtel & Ira  
Wachtel  
Chip Walgren  
Paula Watson  
Catherine Webber  
Tracy McCabe & Fabien Wecker  
Kathy & Al Wehrmann  
Barry Weiner  
Susan & Robert Welke  
Hana & David Wickersheimer  
Rebecca & Paul Wigley  
Sarah Wigley  
Karen & William Wilkinson  
Sarah & Charles Wisseman  
Margaret Yeh  
Elaine & Harold Yoon  
Joan & Theodore Zernich  
And gifts from four Anonymous  
donors

---

**Memorial Gifts to the Marquee Circle**

Arthur Chitz & Stephen Levinson  
Diana Sheets  
Eric Dalheim  
Melissa Huff & Richard Alkire  
Robert L. Foote  
Cheryl Hughes  
Karen & Michael Retzer  
Charles J. & Joanne J. McIntyre  
Elizabeth Kaufman  
Amy A. Rappaport-Lo  
Arlene & Julian Rappaport  
Atron Regen  
Bernadine & Charles Hines

---

\*Former member of the Krannert Center Advancement Council



Pat Januszki & Dick Adams  
Ruth Wyman & Juan Alvarez  
Ellen & Gene Amberg  
Susan & Donald Armstrong  
Carol & Richard Arnould  
Charlotte Arnstein  
Grace Ashenfelder  
Keely Ashman  
Paul Blobaum & Dennis Azuma  
Judith Bach  
Susan & G. Tim Bachman  
Meredith & Joseph Barnes  
Sandra & Ritchie Barnett  
Maeline & Robert Barnstable  
Jim Barrett  
Jane & Peter Barry  
Kathleen & S. Eugene Barton  
Ronald & Susan J. Bates  
Starley Baxter  
Norma Bean  
Mary Beastall  
William Bechem  
Nora Few & Douglas Beck  
Susan & Wayne Bekiares  
Meredith Belber  
Kathleen & John Lansingh  
Bennett\*  
Laura & Kenneth Berk  
Carol & Richard Betts  
Sue Biddle  
Cynthia Biggers  
Mary Ann Boggs  
Tamara Bouseman  
Kathryn & Van Bowersox  
Kelly Bradham  
Vevi & Richard Brannon  
Hannah & Justin Brauer  
M. Q. Brewster  
Susan Stock & Anthony Brienza  
Kathleen Brinkmann  
Margaret & Donald Briskin  
Rebecca Brown  
Leigh Deusinger & David Bruns  
Rosemary Buck

Donald Buss  
Christine & Edwin Cahill  
David Campbell  
Helen & Andreas Cangelaris  
Carol Lite & Kenneth Cantor  
Donna & Steven Carter  
David Ceperly  
Elaine Bearden & Craig  
Chamberlain  
Sheryl & Robert Chambers  
Alexander Chang  
Candice Chirgotis  
Joan Clement  
Maureen & Neal Cohen  
Kristin Patton & John Coleman  
Janet & William Coombe  
Nancy Coombs  
Brad & Meggin Cooper  
Catherine & Jay Corwin  
Marguerite Courtright  
Kathleen Vance & Charles  
Cowger  
Nancy Creason  
Brian Cudiamat  
Barbara Curtis  
Luis Cuza  
Elizabeth & Robert Czys  
Sandra Darby  
Millie Davis  
Patricia & Robert Davis  
Janis Chadsey & Al Davis  
Amy Hassinger & Adam Davis  
Susan Meinkoth & Peter Davis\*  
Lucia & Ron Deering  
Jo Ellen DeVilbiss  
Nancy & Harold Diamond  
Terri Dodson  
Victoria Pifalo & Kieran Donaghy  
Jean Driscoll  
Elizabeth & Don Dulany  
Astrid & John Dussinger  
Emily Edwards  
Joyce Eisenstein  
Sandra Ahten & Kevin Elliot  
Ellen & Douglas Elrick  
E. R. Ensrud  
Tara Toren-Rudisill & Dustin  
Erickson  
Mary Ann Espeseth  
Lea Mellom & Nicholas Fakis  
Eleanor & Walter Feinberg  
Kim & Allan File

Rebecca Nettle-Fiol & Stephen  
Fiol  
Sandy & Joe Finnerty  
Judith & Dale Flach  
Catherine Flood  
Kristin & James Flores  
Rose Marie & Brendan Foley  
Barbara Ford  
Tracey Ford  
Robin & Robert Fossum\*\*  
Shari & Ben Fox  
Claudia & Eduardo Fradkin  
Carrie & Stephen Franke  
Natalie Frankenberg  
Karen & Alain Fresco  
Barbara Fuller-Curry  
Margie Harris & Richard Furr  
Pamela & Samuel Furrer  
Janet Kalmar & Benjamin  
Galewsky  
Laurie Rund & Rex Gaskins  
Donna & J. Fred Giertz  
Evelyn & Joseph Gill  
Alquin Gliane  
Nirmal Gokarn  
Jennifer Arp & Brian Gonner  
Michelle Gonzales  
Nancy Goodall  
Rose & William Goodman  
Miranda Machula & Christopher  
Green  
Karl Greve  
Kimiko Gunji  
Lila Sullivan & Don Gunning  
Rosangela Silva & Ibrahim Hajj  
Barbara Danley & Robin Hall  
Karen Greenwalt & David  
Hamilton  
Karen & David Harris  
Cynthia Capek & Edward Harvey  
Jenny & Dick Harvey  
Dauna Hayman  
Christine & Bruce Hegemann  
John Heiligenstein  
Jannette & Donald Helfrich  
Marne Helgesen  
Susan & Edwin Herricks  
Beverly Herzog  
Shawna Scherer & Steve Higgins  
Lila & Larry Hill  
Paul Hinson  
Jennifer & Paul Hixson

Zarina & Hans Hock  
Kay Hodson  
Judith Hoffman  
Marilee & Robert Hoffswell  
Jean Holley  
Edit & Leland Holloway  
Rhonda Fallon & Brant Houston  
Jessie Houston  
Kimberly & Mark Hubbard  
Gail Hug  
Brady Hughes  
Ann Roseman & Bob Huhn  
Rhonda Hunter  
Laura Keller & Robert Hurst  
Michael Lambert & Timothy  
Hutchison  
Karen & David Hyman  
Andrew Ingram  
Elizabeth & Henry Jackson  
Meghan & Cyril Jacquot  
Janet Elaine Guthrie & Mark  
Jaeger  
Helen & Francis Jahn  
Leah & Michael Jay  
Stephen Follis & Daniel Jensen  
Bruce Johnson  
David Johnson  
Elizabeth Johnston  
Patricia & John Jordon  
Debra Karplus  
Lizbeth Katsinas  
Benita & John Katzenellenbogen  
Viktoria Ford & Stephen Kaufman  
Laura & Don Keefer  
Patrick Keenan  
Megan & David Kees  
Martha & Rolland Kelley  
Beverly & George Kieffer  
Anna Koem & Jin Kim  
Reeva & Daniel Kimble  
Janice Kimpel  
Margaret Patten & Todd Kinney  
Jeffrey & Patricia Kirby  
Gerri Kirchner  
Nancy Kintzel  
Julia Kling  
Patricia & Frank Knowles  
Laura & Kipling Knox  
Christa Knust  
Janice Hiland & Stephen  
Kolderup  
Marilyn Kohl

Antje & Edward Kolodziej  
Jean & Thomas Korder  
Shari L. Kouba  
Joan Kozoll  
Elizabeth & David Krchak  
Curtis Krock  
Carrie & Richard Kubetz  
Judith Kutzko  
James Land  
Susan & Bruce Landreth  
Annette & Charles Lansford  
Casandra & Kenneth Larvenz  
Janet Schultz & Russell Lascelles  
Bernadette & Gary Laumann  
Kathy Lee  
Cecilia & Robert Lentz  
Faye Lesht  
Janet & David Lesle  
Lil Levant  
Daniel Leward  
Patricia & Vernon Lewis  
Mary & Louis Liay  
Larry Lister  
Gail & John Little  
Xinran Liu  
Barbara & James Linder  
Jaclyn & Jeffrey Loewenstein  
Lori & James Lohrberg  
Cynthia & Michael Loui  
Margaret & Erick Loven  
Brandi & Jason Lowe  
Ann Lowry  
Robin Luebs  
Scott Macleod  
Marguerite & Walter Maguire  
Jeanne Connell & Joseph  
Mahoney  
Tracy & J. Victor Malkovich\*  
S. Pauline & Mankin Mak  
Jeannine Malmsbury  
Beth Martin  
Mairead Martin  
Leslie & Gary Mason  
Dwayne D. McBride  
Jane & Michael McCulley  
Charles J. & Joanne J. McIntyre  
by Family  
Alina Reeves & Joseph Meier  
Carol Meitz  
Yonghwa & Daryl Meling  
Christen Mercier  
Sharron & David Mies

Fadi Mikhail  
Charlotte Mattax Moersch &  
William Moersch  
Anna Louise & Terry Moore  
Linda & Mark Moore  
Liz & Dan Morrow  
Marie Mueller  
Diane & Michael Murphy  
Lucy Miller Murray & Martin L.  
Murray  
Jane & Alan Nathan  
Carol Neely  
Jeffrey Nelson  
Eve Harwood & Mark Netter  
Stephanie Nevins  
Peter Newman & Jerome Ng  
Jack Nibling  
Lynda Dautenhahn & Lee  
Nickelson  
Matthew Noel  
Holly Nordheden  
Julie O'Neil  
Donna & Paul Offenbecher  
Julia & David Ohlsson  
Mary & Robert Oliver  
Janice Olson  
David Ostrodka  
Elaine Fowler Palencia & Michael  
Palencia-Roth  
Martha Palit  
Tracy Parsons  
Michaela Passalacqua  
Marjorie Perrino  
Aiko Perry  
Jaya Yodh & Curtis Perry  
Jean & G. David Peters  
Linda & Lyn Peterson  
Constance & James Phillips  
Mary Phillips  
Laura & Mark Pils  
Julie Woodworth & Daniel Pope  
Jan Porterfield-Keenan  
Patricia Powell  
Nancy & Lester Rabe  
Japhia Jayasingh Ramkumar &  
Davendra Ramkumar  
Lois & Edward Rath  
Judith Rathgeber  
Margaret A. Reagan  
Deborah & Michael Reagan  
Bruce Zimmerman & Maureen  
Reagan

Yvonne & Paul Redman  
Lisa Courtney & Charles Reifsteck  
Julie & William Rettberg  
Louise Rogers  
Christie Roszkowski  
Thomas Rozanski  
Katherine Ryan  
Lynn Ryle  
Lynne & Gregory Sancken  
Beverly Sanford  
Joan Farwell-Sargent & Michael  
Sargent  
Mary Jane & Todd Schermer  
Susan K. & Paul K. Schlesinger  
Grace & William Schoedel  
Kathleen & Mark Schoeffmann  
Dawn Schultz  
Patricia Fowler & Jose Schutt-  
Aine  
Molly & John Scott  
Rose & James Scott  
Judy & John Sehy  
Rochelle Sennet  
Kay & Gary Senteney  
Jon Seydl  
Crystal & Michael Shaw  
Alys & Daniel Shin  
Sonya Sholem  
Kim Simmons  
Ralph Simmons  
Lily Siu  
Kim L. Smith & David Skadden  
Elzbieta & Piotr Skorupa  
Elon Slaughter  
Donna Hacker Smith  
Deborah & James Smith  
Marianne Abbey-Smith &  
Campbell Smith  
Elyse Rosenbaum & Robert Smith  
Avigail & Marc Snir  
Melissa Breen & Cheryl Snyder  
Penelope & Anthony Soskin  
Nancy Sottos  
Becky Wauthier\* & Gary Spezia  
Peter Cohen & Jeffrey Sposato  
Elizabeth Stern  
Deborah Stewart  
Gary Stitt  
Andrea Beller & Kenneth  
Stolarsky  
Heather Stone  
Cathy Gao & Peter Sun

Cynthia Swanson  
Tara & Jeff Swearingen  
Kathryn & Jonathan Sweedler  
Curtis Stephens & Alethea Taylor  
Kristine Light & Donald Taylor  
Wes Taylor  
Kevin Teeven  
Charles Titus  
Diane Durbin & David Tjaden  
Sharon & Ross Toedte  
Peter Tomaras  
Joan & Walter Tousey  
Susan & John Townsend  
Marty & Richard Traver  
Jonathan Trupin  
Joan & Stanley Tunnell  
Julia & Thomas Ulen  
Grant Ullrich  
Candice & Frederick Underhill  
Kathryn & Alfonso Valdes  
Linda Van Dyke  
Linda & R. E. Veltman  
Julie Mason-Vermeulen & Paul  
Henri Vermeulen  
George Vickery  
Yvonne & Joseph Vitosky  
Michael Vitoux  
Shirley Walker  
June & Ashton Waller  
Diane & James Wardrop  
Mari McKeeth & Heidi  
Weatherford  
Ann & Ronald Webbink  
Carl Pius Weibel  
Cecelia & Morton Weir  
Elizabeth Weiss  
Paula & Kenneth Weissman  
Michelle & Michael Wellens  
Hannah Werner  
Glennys Mensing & Roger West  
Deborah & Michael Westjohn  
Karen & John Whisler  
Stephanie Daniels & Steven  
White  
Donna & Thomas Williams  
Robert Malik Winter by  
Sarah Hasib, Pete & Molly  
Yunyongying  
Deanna & Kurt Wisthuff  
Susan & Mark Wisthuff  
Ava & Richard Wolf  
Helen Zhang & Tony Wong

Irene & Stanley Wu  
Mary & Gene Wurth  
Ruth Wyman  
Janie & Ehud Yairi  
Wendy & Glen Yang  
Rittchell & Peter Yau  
Michael Yonan  
Sally & Stephen Zahos  
Yvonne & Gerard Ziegler  
Sharon Shavitt & Steven  
Zimmerman

And gifts from three Anonymous  
donors

---

### Student Loop

Sudhanshu Agarwal  
Evelyn Ashley  
Ana Downing & David Balut  
Abigail Berg  
Jessica Blomberg  
John Bullock  
Yu-Ju Chang  
Hsinju Chen  
Kevin Chen  
Pyunghwa Choi  
Trisha Choudhary  
Ellen Cockman  
Sriram Devata  
Ozum Erzurumlu  
Qiuling Fan  
Ruo-Jing Ho  
Daniel Hong  
Chang Hu  
Muyan Hu  
Allyson Imig  
Molly Jennings  
Abhishek Joshi  
Matt Kelley  
Kathryn King  
Zackary Landers  
Julia Lee  
Cassie Liu  
Hongyi Liu  
Liam McBride  
Jacob McGrath  
Grace McMahan  
Isaiah Menard  
Rachel Moan  
Qiaoyi Nie  
Avanthi Obadage

Matthew O'Brien  
Yanni Ovalle  
Kyuri Park  
Samuel Rosner  
Qihao Zhan & Paul Rozzi  
Mary Sanderson  
Joseph Self  
Keyi Shen  
Wilson Shrout  
Jinghan Sun  
Zhuoqi Tao  
Zeyu Tian  
Thinh Tran  
Rebecca Vandewalle  
George Vickery  
Gloria Wang  
Po-Wen Wang  
Irene Wilken  
Ananya Yammanuru  
Yi Yang  
Yuyuan Yang  
Christopher Young  
Lisa Young  
Hongrui Zhao  
Yucheng Liang & Zhongmin Zhu

And a gift from one Anonymous  
donor

---

### Honorary Gifts to the Loop

In honor of Adi Berman  
Maya Crystal  
In honor of Marie Cassioppi  
Kevin Langreck  
In honor of Janis Chadsey  
Al Davis  
In honor of the Chinese American  
Association of Central Illinois  
Helen Zhang & Tony Wong  
In honor of Nathan Gunn  
Nancy Kintzel  
In honor of Gail W. Hague  
Devon Hague & Dallas Trinkle  
In honor of Michael H. Leroy  
Deborah & James Smith  
In honor of Richard Noel  
Matthew Noel  
In honor of Doug Nelson  
Patricia Powell  
In honor of Mary A. Perlstein  
Nancy & Kenneth Kirsch

In honor of Michael D. Ross  
Barbara Danley & Robin Hall  
In honor of Shozo Sato  
Kristin Patton & John Coleman  
In honor of Cheryl Snyder  
Jane & Walter Myers

---

### Memorial Gifts to the Loop

Jane M. Barrett  
James Barrett  
Helen Zhang & Tony Wong  
Alex P. Bhanos  
Susanne Bhanos  
Donald W. Clegg  
Susan & John Townsend  
Patricia A. Coleman  
Kristin Patton & John Coleman  
Ralph D. DeMoss  
Linda & Edwin Goebel  
Norman K. Denzin  
Katherine Ryan  
Bob Eisenstein  
Joyce Eisenstein  
Peter Feuille  
Deborah & James Smith  
Ernest Gullerud  
Walter Alspaugh  
Joan & Peter Hood  
Marguerite & Walter Maguire  
Walter T. Gunn  
Julia & Gene Robinson  
Sandy I Helman  
Carol & Carl Belber  
Meredith Belber  
Stephen Gobel  
Elizabeth Simmons-O'Neill & John  
O'Neill  
Murray Robbins  
Rose & Daniel Sloven  
Nancy & Edward Tepper  
Peter S. Kimble  
Sandra Hamm  
Reeva & Daniel Kimble  
Maxine & David Kuehn  
Jan, Harold, Lori, Tim, Dan, & Pat  
Porterfield  
Audrey Wells & Jeff Zolitor  
Stephen E. Levinson  
Robin & Robert Fossum  
Nancy & Phillipe Geubelle  
Ondine & George Gross  
Karen & David Hyman

Janet & Douglas Nelson  
Susan S. McDonald  
Anonymous  
Carolyn H. McElrath  
Ellen & Gene Amberg  
Joyce D. Meyer  
Faye Lesht  
Dirk V. Mol  
Martha & Thom Moore  
Janet & Douglas Nelson  
Diana Sheets  
Cecile Steinberg  
Nancy F. Morse  
Alice Pfeffer  
Elizabeth Mulvaney & Christopher  
Ramsey  
Rosann G. Noel  
Matthew Noel  
Barbara Orden  
Fran Abramson  
Tara Blau & Ephraim Back  
Carol Lite & Kenneth Cantor  
Ann Einhorn  
Sheila & Philip Krein  
Jaclyn & Jeffrey Loewenstein  
Melissa & Samuel Moore  
Janet & Douglas Nelson  
Michelle Perry  
Alice Pfeffer  
Jan & David Sholem  
Jordan Smith  
Audrey Wells & Jeff Zolitor  
Robert W. Resek  
Donna & J. Fred Giertz  
Martha Green  
Joan & Peter Hood  
Brenda & Morgan Lyngre  
Melvin Rubin  
Lesley Rubin  
Annette H. Schoenberg  
Jannette & Donald Helfrich  
Janet Simmons  
Ralph Simmons  
Ina Tomaras  
Peter Tomaras  
Scott R. White  
Nancy Sottos  
William J. Wilkinson  
Camille & Robert Born  
Linda Van Dyke  
Paula, Ken, Rachel, Marc, & Yoni  
Weissman

---

# KRANNERT CENTER VOLUNTEERS

## COMMUNITY VOLUNTEERS

Paula Abdullah  
Charles Adegoboie  
David Allen  
Elizabeth Allison  
Shiela Anderson  
Todd Anderson  
Faith Arnold  
Rocio Arroyave-Jamison  
Richard Balsbaugh  
Dan Bard  
Assel Barinova  
David Barnett  
Jane Barry  
Mary Berg  
Ann Bergeron  
Kathryn Bergeron  
Andres Bielenberg  
Cameron Bigler  
Elisa Booth  
Lisa Bourial  
Deborah Bramowicz  
George Brock  
Jonne Brown  
Reuben Brown  
Jeff Buoy  
Susan Cannon  
Catherine Capei  
John Carmody  
Karen Chaddick  
Felix Chan  
Allen Chandlier  
Katherine Chang  
Sharon Chao  
Molly Chartrand  
Paige Chew  
Trisha Choudhar  
Pei Hsien Chu  
Kathy Cimansky  
Emma Rose Conway  
Evie Cordell  
Nicole Cruz  
Pamela Cultra  
Paul D'Agostino  
Susan Darmody  
Robert Daughery  
Jean Davidson  
Pamela De Ley

Tiffany Dean  
Karen Decker  
Lori Deyoung  
Nancy DiBello  
Sun Dieker  
Janelle Dobbins  
Rory Dodge  
John Donovan  
David Dorman  
Tamara Ducey  
Martin Dull  
Debra Eichelberger  
Stephanie Ellis  
Beth Engelbrecht-Wiggans  
Richard Engelbrecht-Wiggans  
Roger Epperson  
Beth Evans  
DJ Evans  
Clifford Federmeier  
Judith Federmeier  
Susan Feldman  
Darwin Fields  
Angela Fikes  
Roger Fredenhagen  
Michael Freeman  
Isabella Galgano  
David Gay  
Sherry Geraths  
Robin Goettel  
Katrina Good  
Barbara Gordon  
Gene Grass  
Robin Hadley  
Katherine Hansen  
Samuel Harrison  
Christiana Heidich  
Sarah Henn  
Kathleen Henry  
Jill Hieronymus  
Casey Higgins  
Brenda Hinthorn  
Karen Hite  
Carol Ho  
Steve Holstein  
Kaylee-Ann Hopkins  
Clifford Jakopo  
Cynthia Jean  
Roland Jean  
Linea Johnson

Ron Johnson  
Marcy Joncich  
Alice Jones  
Barbara Jones  
Dave Jordan  
Mary Ann Judd  
Carl Kagawa  
Rashimi Kapoor  
Debra Karplus  
Rafal Kendracki  
Cody Kielzman  
Marina Kolodyazhnaya  
Charles Kroner  
Bruce Kruger  
Susumu Kudo  
Robert Lanier  
Diane Lassila  
Jake Lattyak  
Sydney Lazarus  
Rudy Leon  
Qingyun Li  
Jean Liang  
Qingwen Liang  
Lynn Lin  
Lynda Lopez  
Penny Lopez  
Pezz Lopez  
Virginia Lozar  
Nico Lynx  
Fallon MacFarland  
Lorraline Maimborg  
Christina Majchizak  
Kendra Marsh  
Maria Martin  
Bobbi McCall  
Jeannine McDonald  
James McEnerney  
Linda McEnerney  
Bridget McGill  
Emilee McGill  
Linda Meachum  
Kathleen Metcalf  
Sharron Mies  
Carol Miles  
Carol Miller  
Amy Mills  
Julie Mills  
Patrick Mills  
Susan Mitze

Carol Mizrahi  
Frank Modica  
Lisa Mullins  
Heather Munro  
Christina Myers  
Nguyen Nguyen  
Debbie Nickey  
Judy Nolan  
Dick Norton  
Angela O'Brien  
Marjorie Olson  
Volodymyr Opryschenko  
Irem Orsei  
Carol Osgood  
Brenda Pacey  
Cecillia Paoppi  
Eric Peters  
Brittney Pillow  
Sarah Pirila  
Mark Pollard  
Tressa Porter  
Renee Potter  
Rosa Pullen  
Robert Rasmus  
Gloria Rendon  
Gail Rice  
Lan Richart  
Nancy Rickey  
Jordan Rinkenberger  
Linda & Ronald Roaks  
Judy Rudnicke  
Teresa Rupsch  
Barbara Schleicher  
Mark Sellers  
Christel Seyfert  
Lei Shanbhag  
Carolyn Sharp  
William Shaw  
Beth Shelton  
Mary Shultz  
Connie Smith  
Pierre Stephens  
Deb Stoltz  
Carrie Storrs  
Kelli Stretesky  
Steven Stuff  
Shandra Summerville  
Zhuoqi Tao  
Alice Taylor

John Taylor  
Sarah Taylor  
Donna Telley  
Marissa Terronez  
Catherine Testory  
Tracy Thomas  
Susan Thompson  
Joy Thornton- Walker  
Marina Tinone  
Lee Trail  
Karla Trimble  
Owen Tucker  
Delaney Valese  
Rodney Vanous  
Patti VerStrat  
Brenda Wakeland  
Mary Walker  
Qin Wang  
Kelly Warner  
Jean Weigel  
Whitney Welsh  
Taylor White  
Liesel Wildhagen  
Douglas Williams  
Jessica Williams  
Julie Wirth  
Erik Wolfing  
Lowre Young  
Rui Zhao  
Russell Zillman

Emma Chang  
Xixi Chen  
Ti-Chung Cheng  
Judy Chiang  
June Chun  
Leanna Cui  
Amanda DuVall  
Yating Feng  
Ramyra Gandhi  
Griffin Garrett-Grossman  
Rashmi Ghonasgi  
Vix Henry  
Uma Iyer  
Marge Jerich  
Xiaorui Jiang  
Yixuan Jin  
Nithya Kalwala  
Andrew Klopp  
Susan Koernr  
Maria Kozar  
Mildred Kumar  
Toby Kutz  
Maria Kuzniar  
Amani Lalial  
Lucas Langley  
Jessica Larri  
Erin Lee  
Isabella Lee  
Joy Lee  
Edward Li  
Zilu Li  
Tina Lin  
Wei Liu  
Xiangyi Liu  
Utsav Majumdar  
Liliana Mansfield  
Anne Margalith  
Emma Mayes  
Morgan Miller  
Ethan Miranda  
Kevin Nie  
Qiaoyi Nie  
Nicholas Orr  
Steven Ortega  
Yingrui Ouyang  
Suraj Patel  
Wesley Pereira  
Diana Pham  
Natalia Rafalko  
Malika Raffensperger-Schill  
Eliza Refaat  
Nicolle Reynolds  
Julia Rhodes

Jacqueline Perez Rivas  
Trevor Santiago  
Anna Schuster  
Kaustabh Sharma  
Dan Shen  
Bangyan Shi  
Zhan Shi  
Patricia Simpson  
Pratik Sinha  
Daniel Song  
Wenjie Song  
Lea Stangenes  
Deepak Subramanian  
Pooja Tetali  
Alexandria Thomas  
Tejashree Tirunagari  
Jenny Tran  
Kelly Trevillian  
Jiaxin Wan  
Gloria Wang  
Yining Wang  
Cierra Welch  
Samyla Williams  
Nicholas Wooden  
Ananya Yammanuru  
Huiya Yang  
Jie Zhang  
Nicole Zhang  
Bowang Zhou  
Ino Zhu

---

**KRANNERT CENTER  
STUDENT ASSOCIATION**

Aminah Adebayo  
K. Rae Ambroz  
Helen Anil  
Yusra Ansari  
Caroline Atkinson  
Claire Baffes  
Subhodeep Bakshi  
Kirsten Barker  
Josie Besch  
Aakash Bhide  
Surman Bhowmick  
Alyx Bibbs  
Nick Boivin  
Zach Bottoms  
Alexa Bucio  
Andrew A. Butterworth  
Danielle Caccamo  
Alice Cao



---

# KRANNERT CENTER STAFF

Mike Ross, Director  
Cheryl Snyder, Director of Advancement  
Terri Anne Ciofalo, Associate Director  
for Production  
Maureen V. Reagan, Associate Director  
for Administration and Patron  
Experience  
Lindsay Dalrymple, Assistant Director for  
Operations  
Julianne Ehre, Assistant Director for  
Programming and Engagement

---

## EVENTS

Andrew Almeter, Senior Production  
Coordinator for Events  
Bree Brock, Production Coordinator  
for Events  
Rachel Gladd, Performing Arts Events  
Coordinator

---

## PROGRAMMING AND ENGAGEMENT

Julianne Ehre, Assistant Director for  
Programming and Engagement  
Jason Finkelman, Artistic Director of  
Global Arts Performance Initiatives  
Emily Laugesen, Director of Community  
Engagement  
Sam Smith, Director of Civic Engagement  
and Social Practice  
Dora Watkins, Director of Campus  
Engagement

---

## ADVANCEMENT

Cheryl Snyder, Director of Advancement  
Bethany Whoric, Associate Director  
of Advancement  
David Drake, Advancement Team  
Assistant  
Frank Niemeyer, FAA Annual Giving  
Officer

---

## OPERATIONS

Lindsay Dalrymple, General Manager

## Director's Office

Zia Moon, Krannert Center Showcase  
Director, Office and Communications  
Support Specialist  
Vanessa Lane, Office Manager

## Building Operations

John O. Williams, Facility Manager  
Tony Mapson, Assistant Facility Manager  
Joe Butsch, Building Electrician  
Jared Painter, Assistant Chief Building  
Operations Engineer  
Scott Butler, Eric Carr, Austin Dearth,  
Sara Dietrich, Jessica Fancher, Bryan  
Franzen, Mark Lashbrook, Jacob Lerch,  
Chad Schwenk, Attendants

---

## MARKETING

Maureen V. Reagan, Associate Director  
for Administration and Patron  
Experience

## Communications

Sean Kutzko, Assistant Communications  
Director  
Nicholas Mulvaney, Art Director  
Jodee Stanley, Program and Web Editor

## Public Services

Amy Thomas, Food Services Director  
Elizabeth Henke, Stage 5 Bar Manager  
Michael Bunting, Hospitality Supervisor  
John Ingalls, Culinary Worker  
Whitney Havice, Ticketing and Patron  
Services Director  
Ann-Marie Dittmann, Patron Services  
Assistant Director  
Ty Mingo, Assistant Ticket Services  
Director  
Jon Proctor, Nick Wurl, Ticket Sales  
Supervisors  
Adrian Rochelle, Front of House  
Performance Supervisor

---

## PRODUCTION

Terri Anne Ciofalo, Director  
of Production  
Maria Miguens, Production Manager

## Audio Department

Rick Scholwin, Audio Director  
Alec LaBau, Associate Audio Director/  
Video Director  
Tyler Knowles, Assistant Audio Director

## Costume Shop

Andrea Bouck, Costume Director

Richard Gregg, Costume Rentals Director/  
Wardrobe Adviser/Associate Costume  
Director  
Paige Stewart-Rankins, Hair & Makeup  
Supervisor  
Julianna Steitz, First Hand  
April McKinnis, EB McTigue,  
Cutters/Drapers  
Kari Little-McKinney, Theatrical Stitcher

## Lighting Department

Lisa Kidd, Lighting Director  
David Krupla, Associate Lighting Director  
Nick Jukes, Theatrical Lighting  
Coordinator

## Properties Department

Adriane Binky Donley, Properties Director  
Kira Lyon, Assistant Properties Director

## Scene Shop

Ryan Schultz, Technical Director  
Tatsuya Ito, Associate Technical Director  
Bill Kephart, Scene Shop Chief Clerk  
Bobby Reynolds, Theatrical Scene Shop  
Coordinator  
Kayley Woolums, Theatrical Scene Shop  
Assistant

---

## PERFORMING ARTS BUSINESS SERVICE CENTER

Jenell Hardy, Director of Business  
Services  
Macauley Allen, Business Services  
Specialist  
Debbie Delaney, Accounting Staff

---

# WE'RE SO GLAD YOU'RE AT THE CENTER

We work to create the best possible setting for the experiences you seek and find here.

## NECESSARIES

Restrooms are located in the foyers of Foellinger Great Hall, Tryon Festival Theatre, and Colwell Playhouse; the east entrances on the Lobby level; and in each elevator lobby on Level 1 and Level 3. Lobby restrooms and one restroom in each elevator lobby are fully accessible and contain baby-changing stations.

Ushers will be happy to provide you cough drops courtesy of St. Joseph Apothecary, or disposable foam earplugs if the place starts rockin'.

If you or a companion needs medical assistance, contact an usher or other staff member.

Please take a moment before the performance to note the theatre exits nearest to you. If it becomes necessary to evacuate the theatre, please remain calm, follow the instructions of the house staff, and exit in an orderly fashion to the appropriate safe meeting location, which will be announced to you.

## PHONES AND DEVICES

The use of cell phones, cameras, and recording devices during performances is prohibited unless otherwise announced from the stage.

## LATE ARRIVALS

As a courtesy to performers and audience members, latecomers will be seated only at times selected in advance by the artist. Should you find that you've arrived late to a performance, our Patron Services staff will keep you informed about the earliest seating opportunity.

## LOST ITEMS

If you are in need of Lost and Found, please visit the Patron Services counter. We will do our best to reunite object and owner!

## TICKET RETURNS

If you find you can't attend a performance, please contact the Ticket Office in advance, preferably by 6pm the day before the performance (kran-tix@illinois.edu or 217.333.6280). We never charge a handling fee on ticket transactions.

## ACCESSIBILITY

Krannert Center for the Performing Arts is committed to making experiences accessible for all patrons, and we are delighted to provide a number of services to assist you. Krannert Center is equipped with an assisted listening system, wheelchair-accessible and no-step/few-step seating, and large-print programs, Braille programs, and American Sign Language interpreters are available with three weeks' advance notice.

For assistance regarding your visit, please contact [patronservices@krannertcenter.illinois.edu](mailto:patronservices@krannertcenter.illinois.edu) or 217.333.9716 or visit [go.KrannertCenter.com/Accessibility](http://go.KrannertCenter.com/Accessibility).

Para ayuda en relación con su visita, favor de enviar un email a:

Pour vous aider dans votre visite, prière de nous envoyer un courriel à:

欢迎! 如若您对您的造访需要帮助, 请发送电子邮件至:

स्वागत हे! अगर आपको अपने रहने के लिए मदद चाहिए, ईमेल कीजिए:

환영합니다! 방문에 관해 도움이 필요하실 때에는...  
에게 이메일로 문의하시기 바랍니다:

**PATRONSERVICES@KRANNERTCENTER.ILLINOIS.EDU**  
**217.333.9716**

# STUDENT TICKETS FOR ONLY \$10

Students: being on a budget doesn't mean you have to miss the show! You can enjoy most of our world-class national and international music, dance, and theatre performances for only \$10.

Contact the Ticket Office  
for details at  
[kran-tix@illinois.edu](mailto:kran-tix@illinois.edu)  
or 217.333.6280

 University  
of Illinois  
Students



visit [go.krannertcenter.com/students](http://go.krannertcenter.com/students)

FR FEB 21 AT 7:30PM

SA FEB 22 AT 3PM

# MARK MORRIS DANCE GROUP AND MUSIC ENSEMBLE



krannert center  
FOR THE PERFORMING ARTS AT ILLINOIS