



ILLINOIS THEATRE PRESENTS

I WISH
AN ESCAPE ROOM

Amber Dewey Schultz and Genesee Spridco, directors

Friday–Sunday, April 5–14, 2024

CU Adventures in Time and Space

WELCOME

Welcome and welcome back to Illinois Theatre! This season we invite you to join us as we present our productions—a range of new work and innovative approaches to performance—on campus and about town. We're excited that our student artists will have the opportunity to extend their education beyond the classroom on the stages of the Krannert Center for the Performing Arts as well as other performance spaces in Champaign-Urbana. We look forward to our collaborations at the Virginia Theatre, CU Adventures in Time and Space, and Fat City Bar and Grill for our 2023–2024 season. Our season invites you to dream, play, contemplate and connect in unexpected places and in new ways.

Fall 2023 marks the return of our Daniel J. Sullivan Playwright-in-Residency Program. Inaugurated with Chicago-based playwright Mallory Raven-Ellen Backstrom's *A Darkling at Nightfall*, this program allows us to engage in the early stages of development of new work by exciting American playwrights. This year, our alum and celebrated writer Matthew-Lee Erlbach returns to campus to develop a brand-new work, *Birds of North America*. Questions about displacement and extinction are at the core of this dark

comedy. We are thrilled to work with Erlbach just before his new play, *Revelations*, premieres on Broadway next year.

This season offers musical and satirical adaptations focusing on connection and discovery in unstable, unpredictable worlds. Some of the authors we showcase—Jonathan Larson (*RENT*), Jen Silverman (*Witch*) and Bertolt Brecht in adaptation (*The Gangster Play: CIRCUS/ CIRCUS*, forcibly adapted from Brecht's *The Resistible Rise of Arturo Ui*) look to the shadows of the past as a guide—or a warning—about the futures we build. The productions explore games, gameplaying, and gamesmanship—whether we watch the gamesmanship of a demagogue or a devil, see characters who win or lose at playing pretend, or play the games ourselves—this season brings new attention to the games we play. I hope you'll explore new worlds with us at Krannert Center and join us as we venture into spaces throughout Champaign-Urbana.

—Valleri Robinson
Associate Professor and Head, Theatre

THANK YOU TO OUR SPONSORS

*I Wish: An Escape Room is sponsored in part by
the following generous donors:*



SUSAN & MICHAEL HANEY

PROGRAM

I WISH: AN ESCAPE ROOM

Amber Dewey Schultz and Genesee Spridco, directors

Friday–Sunday, April 5–14, 2024

CU Adventures in Time and Space

ILLINOIS THEATRE

This production is recommended for ages 13 and up.

I WISH: AN ESCAPE ROOM

DIRECTORS

Amber Dewey Schultz
Genesee Spridco

SCENIC DESIGNER

Will Sexton

COSTUME DESIGNER

Chantel Renee

LIGHTING DESIGNER

Yingman Tang

SOUND DESIGNER

Madison Ferris

MEDIA DESIGNER

Danielle Monet

PUZZLE DESIGNERS

Duncan Baird
Emilie Butt

STAGE MANAGER

Lydia Pryzbylski

DIRECTOR'S NOTE

We advocate for theatre that moves away from the passive audience experience of receiving into a proactive, immersive depth of character and collaboration. While theatre is often shackled to the text of a scene held at arm's distance from the audience, the characters of theatre live beyond the words. They are capable of becoming richly complex beings, fully living and breathing engagements of perspective for the audience to connect with as much or as little as they dare. In this immersive experience, we look to share the characters' perspective, challenge the audience's perspective, and provoke conversations of the impact of action.

More and more clearly we are seeing how our actions have consequences, regardless of

the intention. The impact creates ripples that expand past the range of our limited scope. This interactive piece of playable theatre gives agency over to the audience players to fully engage and act upon a knot of wishes and wants. We may feel we have the ability to control our actions, but what does it take to gain control of the cascade of consequences and conundrums that erupt forth from it?

Welcome, play as fully as you dare, and thank you for being a part of the story.

—Genesee Spridco and Amber
Dewey Schultz, directors

CAST

NARRATORS

Anthony DeGregorio
Laney Rodriguez

RAPUNZEL'S PRINCE

Calvin Pennington
Jake Majerczyk

WITCH

Gracie Benson
Jailene Torres

CINDERELLA

Cocoa Afonso
Julia Clavadetscher

MILKY WHITE

Charlotte Howard-Check
Justine Ryan

VOICE OVER CHARACTERS

Courtney Mazeika

PROFILES



Cocoa Afonso (Cinderella) is a junior acting major, as well as a psychology major, at the University of Illinois. They are originally from Brazil, having moved to Champaign-Urbana in 2012. They graduated from Uni High in Urbana in 2019, where they were in many

shows such as *Arsenic and Old Lace*, *Crimes of the Heart* (Babe), *Midsummer Night's Dream* (Hippolyta), and *Noises Off* (Lloyd Dallas). So far in their college career, they have had the opportunity to be onstage at Krannert Center in the fall 2022 in *The Revolutionists* and in Spring 2023 in *Valiente*. Additionally, they performed at the Armory Free Theatre in *Chasing the Ghost* in fall 2021. They are excited to see what the future holds.

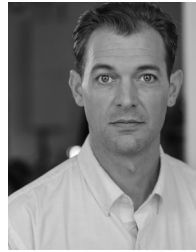


Gracie Benson (Witch) is currently a senior pursuing a BFA in acting at the University of Illinois Urbana-Champaign. She was previously seen onstage at Illinois in *The Revolutionists* (Marie Antoinette U/S, ensemble crew) and *Coriolanus* (Volscian

Soldier 2), as well as at the Armory Free Theater in *The Gulf* (Kendra) and *So You Think You Can Stay?* (America). Last year, she took part in a short film entitled *After Algos* in association with a few media students on campus. She is very grateful for everything she's learned as a student and artist at the U of I. Enjoy the show!



Julia Clavadetscher (Cinderella) (she/her) is a third-year acting major at the University of Illinois Urbana-Champaign. You might have seen her as Hope in *Urinetown* or as Volscian Soldier #1 in *Coriolanus*. Outside of the U of I, she has been in *Mac Beth* as Lady M and in *Hurricane Diane* as Carol.



Anthony DeGregorio (Narrator) is an actor/director/comic from Northern California who received his BA in theatre performance at California State University Long Beach and is currently pursuing his MFA at the University of Illinois Urbana-Champaign. He was

most recently seen as Aufidius in Illinois Theatre's production of *Coriolanus*. He is a company member with the Echo Theater Company, and is a founding member of the LA THTR TRUK, which brings free theatre to communities all across the greater Los Angeles Area. He would like to thank his family for all their constant support, Riel Paley for helping him find his inner clown, and the Wu-Tang Clan for teaching him to bring da ruckus.



Charlotte Howard-Check (Milky White) is a junior acting major with a musical theatre minor. She has been recently seen in *The Wild Party* (Ensemble), *Coriolanus* (Citizen), and *Urinetown* (Penelope Pennywise). In her free time, Charlotte loves cooking and

writing music. She would like to thank her friends and family for their continued support.



Jake Majerczyk (Rapunzel's Prince) is a sophomore pursuing a BFA in acting at the University of Illinois. Jake hails from the south suburbs of Chicago and now resides in Champaign, Illinois. This fall, Jake made his Illinois Theatre debut in *The Birds of North America* written

by U of I alum Matthew-Lee Erlbach and directed by Latrelle Bright. When not at Krannert Center, Jake spends his time with the What You Will Shakespeare Company, playing King Hamlet in their fall production of *Hamlet*.



Courtney Mazeika (Voice Over Characters) is currently a senior pursuing her BFA in acting at the University of Illinois. Recent Illinois Theatre credits include *On the Verge* (Alex), *Fefu and Her Friends* (Julia), *A Dance in the Dark* (Amber), *Urinetown: The Musical* (Soupy Sue), and

The Heist (Charlie). When she's not creating with Illinois Theatre, Courtney enjoys writing and performing stand-up comedy, modeling for The Fashion Network, and collaborating with her improv troupe (Odd Request) and sketch comedy troupe (Potted Meat) as president within the Champaign-Urbana community.



Calvin Pennington (Rapunzel's Prince) is currently a freshman pursuing a BFA in acting at the University of Illinois. He is very excited to be making his Illinois Theatre debut. Recently he has performed in a scene from *Cyrano de Bergerac* (Christian) as a part of a directing

workshop in the Armory Free Theatre. When not studying in the Krannert lobby Calvin spends his time listening to Billy Joel and loves to sing, too.



Laney Rodriguez (Narrator) (she/her) is overjoyed to be joining Illinois Theatre in this exciting production of *I Wish*. Laney is a Cuban actress and choreographer hailing from Miami, Florida. She is currently in her second year pursuing an MFA in acting at the University

of Illinois Urbana-Champaign. She holds a BFA in acting from Florida International University. Illinois Theatre credits include: Ali/Vendor/Mimi's Mom in *RENT* and Menenius in *Coriolanus*. Armory Free Theatre credits include: Contestant Four in *So You Think You Can Stay?* Notable South Florida theatre credits include: *Everybody (Somebody)*, *Tres Hermanas* (Olga), *Sonnets for an Old Century* (Cordelia), *Right You Are If You Think You Are* (Mrs. Sirelli). Big thanks to all the artists who made this production possible! All the love and dedication to my family, friends, advisors, and teachers. Seguimos pa'lante! Website: www.laneyrodriguez.com / IG: @laneyrodz



Justine C. Ryan (Milky White) is making her third Krannert Center appearance as an MFA student. She recently appeared as an ensemble member in *RENT* and as Osric in Notre Dame's Shakespeare Festival *Hamlet 50/50*. She debuted at TheatreSquared as the show

understudy for *School Girls; or the African Mean Girls Play* in 2021. Ryan returned to appear as Mrs. Phelps in TheatreSquared's summer (2021) production of *Matilda the Musical*, 2021 ANPF reading, Pearl understudy in *Miss You Like Hell*, and is an understudy in the world premiere of

FLEX. Her credits include being a member of the LatinX Theatre Project cohort (2019–2022), playing Ciera Johnson on the TV One Network series *For My Man* (S:4, Ep.23); and co-writing and starring in a one-woman show called *Lessons From My Suitcase*, which premiered at the 2018 Kansas City Fringe Festival. Justine earned her Bachelor of Fine Arts in theatre from Bennett College.



Jailene Torres (Witch) is a senior BFA acting major here at the University of Illinois Urbana-Champaign. Her Krannert Center credits include Prima in *The Realness*, Virgilia in *Coriolanus*, Andrea/Mary 2 in *The Neverland*, Ensemble/US Tania in *Native Gardens*, and US

Alma in *The Redline Collection*. She's also appeared on campus at the Armory Free Theatre as Contestant Three in *So You Think You Can Stay?* and as Emilie in *The Moors*. Offstage, Jai loves to spend time with friends and family, play with sparkly makeup, cook yummy meals, and drink Dr. Pepper. She would like to thank everyone in her life for their ongoing love and support.

Amber Dewey Schultz (Director), a Clinical Assistant Professor of Design in the University of Illinois' Department of Theatre and affiliated faculty in Game Studies and Design, also leads the Academic Programs department at the Siebel Center for Design. Specializing in gamified storytelling, her designs range from playable theatre and theatrical escape rooms to tabletop role-playing games. Notable works include *The Heist: A Theatrical Escape Room* (Illinois Theatre), *Thank you, Five!* (a stage management-themed board game), and *Murder on Klein Island* (a tabletop RPG whodunit). Theatrical escape rooms that students designed within Amber's courses can be found at the Museum of the Grand Prairie

(Mahomet, Illinois) and U of I's Molecule Maker Lab Institute. Amber previously served in stage management and production management roles at such performing arts companies as San Francisco Opera, the Dallas Opera, and Krannert Center for the Performing Arts. Amber holds a BFA in design and production from the University of North Carolina School of the Arts and is pursuing an MFA in experience design at Miami University.



Genesee Spridco (Director) has been performing professionally across the country in various forms of interactive theatre for over 20 years. Genesee currently tours with the *Washing Well Wenchies*, which was voted the best non-musical

stage act in the nation for 2023. She has also directed and performed award-winning nonverbal immersive Fantastikal experiences in Chicago and Los Angeles. Genesee earned her MFA in devised acting from Dell'Arte International School for Physical Theatre. Illinois Theatre credits include *Varslaren: The Whistleblower* (Devising Director), *Pshitter!* (Associate Dir/Movement Director), *The Curious Incident of the Dog in the Night Time* (Movement Director). Genesee is an advocate for new works in their various creation processes and currently serves as regional chair for the National Playwriting Program with the Kennedy Center American College Theatre Festival. Genesee teaches movement at Illinois Theatre as Assistant Teaching Professor with emphasis on Alexander technique, mask work, Viewpoints, circus and clown, and vocabularies for physical embodiment of character.

Duncan Baird (Puzzle Designer) is one of the lead instructors for the Champaign-Urbana Community Fab Lab and affiliated faculty within the Games Studies and Design program at the

University of Illinois Urbana-Champaign. He has been teaching makerspace-related courses for the university since 2017, from introductions to makerspaces to working with Emilie Butt to create game- and design oriented experiences. He has designed and developed *Glider Grove* (2022 CUDO Plays Board Game Design Competition Winner) and *Escape from the Hospital: A Complex Interprofessional Geriatric Discharge Planning Exercise*. His students have developed escape rooms used by the Molecule Maker Lab Institute and Museum of the Grand Prairie for public engagement.

Emilie N. Butt (Puzzle Designer) (MSLIS) is the Engagement & Instruction Coordinator for the Champaign-Urbana Community Fab Lab, and affiliated faculty within the Game Studies and Design program at the University of Illinois Urbana-Champaign. She is a makerspace and game design educator focused on community engagement and programming around games literacies, art, board games, and escape room design for all ages. She has designed and developed *Glider Grove* (2022 CUDO Plays Board Game Design Competition Winner) and *Escape From the Hospital: A Complex Interprofessional Geriatric Discharge Planning Exercise* (Carle Illinois College of Medicine). Her students have developed escape rooms used by the Molecule Maker Lab Institute and Museum of the Grand Prairie for public engagement, and she has presented on developing and teaching escape room design courses at the Game Developers Conference (2022).

Madison Ferris (Sound Designer) is a third-year graduate student pursuing an MFA in sound design and technology at the University of Illinois Urbana-Champaign. At Illinois, she has previously served as the sound designer for *The Realness*, *Urinetown*, and *Redline Collection*. She has also served as the audio engineer for *Carnaval! 2023*

and as the A1 for *City of Angels*. Outside of the U of I, she has served as the sound department head at Contemporary American Theater Festival. Beyond her studies, she enjoys spending her free time on photography and videography.

Danielle Monet (Media Designer) is a multimedia designer with experience in theatrical and themed entertainment. She received her Bachelors of Arts in design and technology from San Diego State University. While in San Diego she worked in technical entertainment and aided in the grand opening of a local theme park. Her credits include *A Raisin in the Sun* at San Diego State University, *The Royale* and media in pieces from *October Dance 2023* and *February Dance 2024* at Krannert Center Danielle is currently a second-year graduate student pursuing a Master of Fine Arts at the University of Illinois with an emphasis in media design and technology.

Chantel Renee (Costume Designer) is an MFA candidate in costume design in her last semester at the University of Illinois. Chantel is from Detroit, Michigan and received her BFA in apparel and textile design from Michigan State University; she also studied briefly at Ohio University before coming to the U of I. Her Illinois Theatre credits include *RENT* (Costume Designer), *Coriolanus* (Assistant Costume Designer), and *Urinetown* (Assistant Costume Designer and Wardrobe Supervisor). Other credits include *Absentia* (Costume Designer), *Vibrancy Theater*; *Everybody* (Craft Shop Supervisor), *Be Head*, *The Women of Lockerbie* (Costume Designer) Ohio University Theater; *Bonnets: How Ladies of Good Breeding are Induced to Murder* (Costume Designer), *Frankenstein* (Hair and Makeup Designer) Michigan State University Theatre. More of Chantel's work can be viewed on her website chantelreneedesigns.com. Chantel is also the Owner of So'Cha Handmade a jewelry and

accessories business, Find me on Instagram @sochahandmade.

Yingman Tang (Lighting Designer) is currently a fourth-year graduate student in lighting design at the University of Illinois Urbana-Champaign. She comes from Szechuan, China. Her credits include *The Royale*, *Urinetown*, and *February Dance 2022* at Krannert Center; *Newsies* and *Shrek* at Balibay Theatre; *Fear and Misery of the Third Reich* at Duanjun Theatre, Shanghai; Maigi Jiao's personal concert and Siena Nishizawa's personal concert at Morden Sky, Shanghai; and ICME/EMW's new media concert at Shanghai Concert Hall; etc. She directed *Death Variations* at Armory Free Theatre. Yingman's installation artist work *The whole was* was selected for Prague Quadrennial 2019.

Will Sexton (Scenic Designer) is an Air Force veteran and third-year scenic design MFA candidate with his BA in theatre arts and BS in business management from Bridgewater State University. Previous scene design work includes *RENT* and *The Revolutionists* (Illinois Theatre); *Descendants: The Musical*, *Moana*, and *James and the Giant Peach* (Ogunquit Playhouse); *Constellations*, *The Totalitarians*, and *The Bald Soprano* (Bridgewater State University). He has presented at the United States Institute for Theatre Technology on the topic "Integrating Military Experience into an Undergraduate Theatre Education." Additionally, Will was scenic carpenter for *Singin' in the Rain*, *On Your Feet!*, *The Da Vinci Code*, *The Cher Show*, *The Nutty Professor*, *Dr. Holland's Opus* (Ogunquit Playhouse); *Much Ado About Nothing* (Brown Box Theatre Project); and was Crew Chief/Deck Carpenter for *Into the Woods*, *Gertrude and Claudius*, and *Fall Springs* (Barrington Stage Company). Upcoming work includes his scene design for *Pass Over* at the Armory Free Theater.

PRODUCTION STAFF

PRODUCTION MANAGER

Joshua K Stenger

TECHNICAL DIRECTOR

Hanna Bowen

PROPERTIES MANAGER

Charles Pascale

**HAIR AND MAKEUP
SUPERVISOR**

Paige Stewart-Rankins

**HAIR AND MAKEUP
COORDINATOR**

Chantel Renee

ASSISTANT STAGE MANAGER

Sarah Lenehan

Shea Manning

**ASSISTANT SCENIC
DESIGNER**

Nicholas J. Taboni

**ASSISTANT COSTUME
DESIGNER**

Stephanie Spotts

SCENIC CHARGE

Kate Spademan

MEDIA ENGINEER

Lili Federico

AUDIO ENGINEER

Daniella Brown

PUZZLE SYSTEMS ENGINEER

Addie Hoegberg

DRAFTER

Teagan Bednarek

PROPS ASSISTANT

Emma Brutman

PUZZLE TECHNICIANS

Yuxuan Wang

**PLAYABLE THEATRE
ARCHIVIST**

Will Helmke

DEVISING

Kashara Bennett

Emilie Gilles

Julie Oelerich

Anishi Patel

Sophia Urban

PRODUCTION CARPENTER

Jason Jakubaitis

WARDROBE SUPERVISOR

Stephanie Spotts

LAND ACKNOWLEDGMENT

The University of Illinois System carries out its mission in its namesake state, which includes the traditional territory of the Peoria, Kaskaskia, Piankashaw, Wea, Miami, Mascoutin, Odawa, Sauk, Mesquaki, Kickapoo, Potawatomi, Ojibwe, Menominee, Ho-Chunk, and Chickasaw Nations. These lands continue to carry the stories of these Nations and their struggles for survival and identity.

As a land-grant institution, the University of Illinois has a particular responsibility to acknowledge the peoples of these lands, as well as the histories of dispossession that have allowed for the growth of this institution. We are also obligated to reflect on and actively address these histories and the role that this university has played in shaping them.

This acknowledgment and the centering of Native peoples is a start as we move forward.

Krannert Center affirms the commitment by the university to move beyond these statements, toward building deeper relationships and taking actions that uphold and preserve Indigenous rights and cultural equity.

As we gather to experience this performance, we have an opportunity to reflect on the ways that systems of oppression have shaped our society. We can work together to create systems that support human dignity, establish equity, strengthen cross-cultural relationships, and draw upon the creative capacity of all people that make up this community, state, nation, and world.

FRIENDS OF ILLINOIS THEATRE

MAKING THEATRE MAKERS SINCE 1967

We are living through history. In the midst of it, Illinois Theatre continues to be a leader in producing art that helps us know ourselves and the world we live in. We are training students today to imagine the art of tomorrow. If you'd like to help, we welcome you as a Friend of Illinois Theatre. We'll use your financial contributions to support our students through scholarships, visiting artist residencies, new work development, and production. Help Illinois Theatre make theatre that matters today, tomorrow, and beyond.

*Contributions to Friends of Illinois Theatre can be made by visiting **theatre.illinois.edu/about/giving**, scanning the QR code, or by check payable to UIF/Friends of Illinois Theatre and sent to: University of Illinois Foundation, PO Box 3429, Champaign, IL 61826-3429.*



ILLINOIS THEATRE DONOR SUPPORT

The Illinois Department of Theatre is grateful to those who support us in providing opportunities for our theatre students to grow and develop their skills in all facets of production and performance.

Thanks to all of the 2023-24 donors listed below for your generous contributions.

Anonymous
Mary Beastall
Charles Boast and Marsha Clinard
Hannah and Justin Brauer
Ian Brooks and Rebecca Bigelow
Cody Chen
Candice Chirgotis
John Coleman and Kristin Patton
Rebecca Crystal and Paul Balik
Jane and Daniel Curry
Matthew and Karen Dettmer
Diana and Robert Dignan
Susan Dingle and Paul Picha
Lisa G. Dixon
Stephanie Drake
Martin Dull
Eileen and David Dunlap
Lynn A. Facht
Friends of Rick Orr
Marita Geraghty
Nobuko Graves
Susan and Michael Haney
Lon Hoegberg
Shuyu Hua

Diana Jaher
Robert Jenista
Daniel and Lyra Kelly
Brian and Susie LaDuca
Yudong Li
Jeffrey and Holly Lieber
Alan Lindahl
Tiffany and James McNeely
George Monahan and Susan Cohen
Timothy Ortmann
Lynn Peters
Alan Rapoport and Tess Chappuis
Yea Jin Rha
Mark Rhodes
Stephen and Deborah Rugg
Mary and Ronald Suter
Ross and Sharon Toedte
Timothy Veach and Christina Kirk
Royal Ward
Travis Williams
Carl Wisniewski
Zhiheng Ye
Taige Zhang
Claire Zinnes

DEPARTMENT OF THEATRE

FACULTY

Valleri Robinson (Head)
Lisa Gaye Dixon (Co-producer)
Eben Alguire
Robert G. Anderson
John Boesche
Latrelle Bright
Jordan Coughtry
Kim Curtis
José Díaz-Soto
Reiko Huffman
Jeffrey Eric Jenkins
Rose Kaczmarowski
Dylan Kind
Cynthia Kocher
Olga Maslova
Kim McKean
Thom Miller (Co-producer)
Allison Moody
J.W. Morrisette (Associate Head)
Aaron Muñoz
Brant Murray
Scott Neale
Robert Perry (Co-director, Level21)
Kirsten Pullen
Christina Rainwater
Brett Ashley Robinson
Sandra Ruiz
Katyoun Salmasi
Genesee Spridco
Zev Steinrock
Nisi Sturgis

KRANNERT CENTER/THEATRE FACULTY

Andrea Bouck
Terri Anne Ciofalo (Co-director, Level21)
Amber Dewey Schultz
Adriane Binky Donley
Richard Gregg
Tatsuya "Tito" Ito
Lisa Kidd
David Krupla
Alec LaBau
Kira Lyon
Maria Miguens
Paige Stewart-Rankins
Bobby Reynolds
Rick Scholwin
Ryan Schultz

AFFILIATE THEATRE FACULTY

Robert Barrett (English)
Jeffrey Magee (Music)
Andrea Stevens (English)
Carol Symes (History)
Ariana Traill (Classics)
Deke Weaver (Art+Design)

COUNSELING CENTER/THEATRE FACULTY

Lisa Fay

EMERITUS FACULTY

John Ahart
Kathleen Conlin
James Berton Harris
Robin McFarquhar
Tom Mitchell
Kathy Perkins
Shozo Sato
Daniel Sullivan

ADMINISTRATION

Academic Advisor and Assistant to the
Head: Cathy Feely
Business Services Manager: Greg
Anderson
Business Services Support: Debbie
Delaney, Stacey Elliott, Tara Heiser,
Shelly Thomas-Eichorn
Office Manager: Corey Campbell
Photographer: Darrell Hoemann

GRADUATE STUDENTS

Tiffany Adams
Capri Agresta
Daniella Brown
Vincent Carlson
Jaritt Catellier
Kenneth Church
Mitchel Civello
Anna Compton
Anthony Degregorio
Bridgette Dona
Joshua Doniek
Shannon Donovan
Nicolas Dudt
Jessica Elliott
Robyn Farley
Lili Federico
Madison Ferris

Austin Fuoss Feinberg
Sarah Goldstein
Emily Goodell
Matt Grenier
Meliza Gutierrez
Angela Harrington
Margaret Horstman
Ty Hudson
Carlee Ihde
Jesse Jaeckel
Danielle Johnson
Robert Kaylor
Dan Kipp
Anne Kolaczowski-Magee
Kev Kollmann
M. Landon
Mary Lewis
Kaitlyn Meegan
Toyosi Morgan
Byron Mrowiec
Charles Pascale
Ernest Emmanuel Peeples
Courtney Pobst
Fallon Podrazik
Wesley Price
Lydia Przybylski
Sissy Anne Quaranta
Jessica Reddig
Chantel Renee
Laney Rodriguez
Justine Ryan
Will Sexton
Lizi Shaul
Emery Smith
Y'vonne Rose Smith
Nicolas Sole
Kate Spademan
Stephanie Spotts
Joshua Stenger
Nicholas Taboni
Avery Tang
Yingman Tang
KHetag Tsabolov
Kyglo Webb
Kyle Wurtz
Yiqi Zhang

KRANNERT CENTER VOLUNTEERS

COMMUNITY VOLUNTEERS

Paula Abdullah
Charles Adegboie
David Allen
Elizabeth Allison
Shiela Anderson
Todd Anderson
Faith Arnold
Rocio Arroyave-Jamison
Richard Balsbaugh
Dan Bard
Assel Barinova
David Barnett
Jane Barry
Mary Berg
Ann Bergeron
Kathryn Bergeron
Andres Bielenberg
Cameron Bigler
Elisa Booth
Lisa Bourial
Deborah Bramowicz
George Brock
Jonne Brown
Reuben Brown
Jeff Buoy
Susan Cannon
Catherine Capei
John Carmody
Karen Chaddick
Felix Chan
Allen Chandlier
Katherine Chang
Sharon Chao
Molly Chartrand
Paige Chew
Trisha Choudhar
Pei Hsien Chu
Kathy Cimansky
Emma Rose Conway
Evie Cordell
Nicole Cruz
Pamela Cultra
Paul D'Agostino
Susan Darmody
Robert Daughery
Jean Davidson
Pamela De Ley

Tiffany Dean
Karen Decker
Lori Deyoung
Nancy DiBello
Sun Dieker
Janelle Dobbins
Rory Dodge
John Donovan
David Dorman
Tamara Ducey
Martin Dull
Debra Eichelberger
Stephanie Ellis
Beth Engelbrecht-Wiggans
Richard Engelbrecht-Wiggans
Roger Epperson
Beth Evans
DJ Evans
Clifford Federmeier
Judith Federmeier
Susan Feldman
Darwin Fields
Angela Fikes
Roger Fredenhagen
Michael Freeman
Isabella Galgano
David Gay
Sherry Geraths
Robin Goettel
Katrina Good
Barbara Gordon
Gene Grass
Robin Hadley
Katherine Hansen
Samuel Harrison
Christiana Heidich
Sarah Henn
Kathleen Henry
Jill Hieronymus
Casey Higgins
Brenda Hinthorn
Karen Hite
Carol Ho
Steve Holstein
Kaylee-Ann Hopkins
Clifford Jakopo
Cynthia Jean
Roland Jean
Linea Johnson

Ron Johnson
Marcy Joncich
Alice Jones
Barbara Jones
Dave Jordan
Mary Ann Judd
Carl Kagawa
Rashimi Kapoor
Debra Karplus
Rafal Kendracki
Cody Kielzman
Marina Kolodyazhnaya
Charles Kroner
Bruce Kruger
Susumu Kudo
Robert Lanier
Diane Lassila
Jake Lattyak
Sydney Lazarus
Rudy Leon
Qingyun Li
Jean Liang
Qingwen Liang
Lynn Lin
Lynda Lopez
Penny Lopez
Pezz Lopez
Virginia Lozar
Nico Lynx
Fallon MacFarland
Lorraline Maimborg
Christina Majchizak
Kendra Marsh
Maria Martin
Bobbi McCall
Jeannine McDonald
James McEnerney
Linda McEnerney
Bridget McGill
Emilee McGill
Linda Meachum
Kathleen Metcalf
Sharron Mies
Carol Miles
Carol Miller
Amy Mills
Julie Mills
Patrick Mills
Susan Mitze

Carol Mizrahi
Frank Modica
Lisa Mullins
Heather Munro
Christina Myers
Nguyen Nguyen
Debbie Nickey
Judy Nolan
Dick Norton
Angela O'Brien
Marjorie Olson
Volodymyr Opryschenko
Irem Orsei
Carol Osgood
Brenda Pacey
Cecillia Paoppi
Eric Peters
Brittney Pillow
Sarah Pirila
Mark Polland
Tressa Porter
Renee Potter
Rosa Pullen
Robert Rasmus
Gloria Rendon
Gail Rice
Lan Richart
Nancy Rickey
Jordan Rinkenberger
Linda & Ronald Roaks
Judy Rudnicke
Teresa Rupsch
Barbara Schleicher
Mark Sellers
Christel Seyfert
Lei Shanbhag
Carolyn Sharp
William Shaw
Beth Shelton
Mary Shultz
Connie Smith
Pierre Stephens
Deb Stoltz
Carrie Storrs
Kelli Stretesky
Steven Stuff
Shandra Summerville
Zhuoqi Tao
Alice Taylor

John Taylor
Sarah Taylor
Donna Telley
Marissa Terronez
Catherine Testory
Tracy Thomas
Susan Thompson
Joy Thornton- Walker
Marina Tinone
Lee Trail
Karla Trimble
Owen Tucker
Delaney Valese
Rodney Vanous
Patti VerStrat
Brenda Wakeland
Mary Walker
Qin Wang
Kelly Warner
Jean Weigel
Whitney Welsh
Taylor White
Liesel Wildhagen
Douglas Williams
Jessica Williams
Julie Wirth
Erik Wolfing
Lowre Young
Rui Zhao
Russell Zillman

Emma Chang
Xixi Chen
Ti-Chung Cheng
Judy Chiang
June Chun
Leanna Cui
Amanda DuVall
Yating Feng
Ramya Gandhi
Griffin Garrett-Grossman
Rashmi Ghonasgi
Vix Henry
Uma Iyer
Marge Jerich
Xiaorui Jiang
Yixuan Jin
Nithya Kalwala
Andrew Kloop
Susan Koernr
Maria Kozar
Mildred Kumar
Toby Kutz
Maria Kuzniar
Amani Lalial
Lucas Langley
Jessica Larri
Erin Lee
Isabella Lee
Joy Lee
Edward Li

Zilu Li
Tina Lin
Wei Liu
Xiangyi Liu
Utsav Majumdar
Liliana Mansfield
Anne Margalith
Emma Mayes
Morgan Miller
Ethan Miranda
Kevin Nie
Qiaoyi Nie
Nicholas Orr
Steven Ortega
Yingrui Ouyang
Suraj Patel
Wesley Pereira
Diana Pham
Natalia Rafalko
Malika Raffensperger-Schill
Eliza Refaat
Nicolle Reynolds
Julia Rhodes

Jacqueline Perez Rivas
Trevor Santiago
Anna Schuster
Kaustabh Sharma
Dan Shen
Bangyan Shi
Zhan Shi
Patricia Simpson
Pratik Sinha
Daniel Song
Wenjie Song
Lea Stangenes
Deepak Subramanian
Pooja Tetali
Alexandria Thomas
Tejashree Tirunagari
Jenny Tran
Kelly Trevillian
Jiaxin Wan
Gloria Wang
Yining Wang
Cierra Welch
Samyla Williams
Nicholas Wooden
Ananya Yammanuru
Huiya Yang
Jie Zhang
Nicole Zhang
Bowang Zhou
Ino Zhu

**KRANNERT CENTER
STUDENT ASSOCIATION**

Aminah Adebayo
K. Rae Ambroz
Helen Anil
Yusra Ansari
Caroline Atkinson
Claire Baffes
Subhodeep Bakshi
Kirsten Barker
Josie Besch
Aakash Bhide
Surman Bhowmick
Alyx Bibbs
Nick Boivin
Zach Bottoms
Alexa Bucio
Andrew A. Butterworth
Danielle Caccamo
Alice Cao

KRANNERT CENTER STAFF

Mike Ross, Director
Cheryl Snyder, Director of Advancement
Terri Anne Ciofalo, Associate Director
for Production
Maureen V. Reagan, Associate Director
for Administration and Patron
Experience
Julianne Ehre, Assistant Director for
Programming and Engagement

EVENTS

Andrew Giza, Events Director
Andrew Almeter, Senior Production
Coordinator for Events
Bree Brock, Production Coordinator
for Events
Seth Wheeler, Technical Coordinator
for Events
Rachel Gladd, Performing Arts Events
Coordinator

PROGRAMMING AND ENGAGEMENT

Julianne Ehre, Assistant Director for
Programming and Engagement
Jason Finkelman, Artistic Director of
Global Arts Performance Initiatives
Emily Laugesen, Co-Director of
Engagement
Sam Smith, Director of Civic Engagement
and Social Practice

ADVANCEMENT

Cheryl Snyder, Director of Advancement
Bethany Whoric, Associate Director
of Advancement
David Drake, Advancement Team
Assistant
Frank Niemeyer, FAA Annual Giving
Officer

FINANCE AND OPERATIONS

Director's Office

Zia Moon, Krannert Center Showcase
Director, Office and Communications
Support Specialist
Vanessa Lane, Office Manager

Building Operations

John O. Williams, Facility Manager
Tony Mapson, Assistant Facility Manager
Joe Butsch, Building Electrician

Jared Painter, Assistant Chief Building
Operations Engineer
Scott Butler, Eric Carr, Emmett Catlin,
Austin Dearth, Sara Dietrich, John
Ekstrom, Jessica Fancher, Bryan
Franzen, Mark Lashbrook, Jacob Lerch,
Chad Schwenk, Attendants
Glenda Dalton, Operations Office
Support Associate

MARKETING

Maureen V. Reagan, Associate Director
for Marketing

Communications

Sean Kutzko, Assistant Communications
Director
Nicholas Mulvaney, Art Director
Jodee Stanley, Program and Web Editor

Public Services

Amy Thomas, Food Services Director
Abraham Castro, Intermezzo Kitchen
Lead
Elizabeth Henke, Stage 5 Bar Manager
Michael Bunting, Hospitality Supervisor
Whitney Havice, Ticketing and Patron
Services Director
Ty Mingo, Assistant Ticket Services
Director
Jon Proctor, Nick Wurl, Ticket Sales
Supervisors
Ann-Marie Dittmann, Patron Services
Assistant Director
Adrian Rochelle, Front of House
Performance Supervisor

PRODUCTION

Terri Anne Ciofalo, Director
of Production
Maria Miguens, Production Manager

Audio Department

Rick Scholwin, Audio Director
Alec LaBau, Associate Audio Director/
Video Director

Costume Shop

Andrea Bouck, Costume Director
Richard Gregg, Costume Rentals Director/
Wardrobe Adviser/Associate Costume
Director

Paige Stewart-Rankins, Hair & Makeup
Supervisor
Julianna Steitz, First Hand
April McKinnis, EB McTigue,
Cutters/Drapers
Kari Little-McKinney, Theatrical Stitcher

Lighting Department

Lisa Kidd, Lighting Director
David Krupla, Associate Lighting Director
Nick Jukes, Theatrical Lighting
Coordinator

Properties Department

Adriane Binky Donley, Properties Director
Kira Lyon, Assistant Properties Director

Scene Shop

Ryan Schultz, Technical Director
Tatsuya Ito, Associate Technical Director
Bill Kephart, Scene Shop Chief Clerk
Bobby Reynolds, Theatrical Scene Shop
Coordinator
Liam Romano, Kayley Woolums, Theatrical
Scene Shop Assistants

PERFORMING ARTS BUSINESS SERVICE CENTER

Debbie Delaney, Stacey Elliott,
Accounting Staff

WE'RE SO GLAD YOU'RE AT THE CENTER

We work to create the best possible setting for the experiences you seek and find here.

NECESSARIES

Restrooms are located in the foyers of Foellinger Great Hall, Tryon Festival Theatre, and Colwell Playhouse; the east entrances on the Lobby level; and in each elevator lobby on Level 1 and Level 3. Lobby restrooms and one restroom in each elevator lobby are fully accessible and contain baby-changing stations.

Ushers will be happy to provide you cough drops courtesy of St. Joseph Apothecary, or disposable foam earplugs if the place starts rockin'.

If you or a companion needs medical assistance, contact an usher or other staff member.

Please take a moment before the performance to note the theatre exits nearest to you. If it becomes necessary to evacuate the theatre, please remain calm, follow the instructions of the house staff, and exit in an orderly fashion to the appropriate safe meeting location, which will be announced to you.

PHONES AND DEVICES

The use of cell phones, cameras, and recording devices during performances is prohibited unless otherwise announced from the stage.

LATE ARRIVALS

As a courtesy to performers and audience members, latecomers will be seated only at times selected in advance by the artist. Should you find that you've arrived late to a performance, our Patron Services staff will keep you informed about the earliest seating opportunity.

LOST ITEMS

If you are in need of Lost and Found, please visit the Patron Services counter. We will do our best to reunite object and owner!

TICKET RETURNS

If you find you can't attend a performance, please contact the Ticket Office in advance, preferably by 6pm the day before the performance (kran-tix@illinois.edu). We never charge a handling fee on ticket transactions.

ACCESSIBILITY

Krannert Center for the Performing Arts is committed to making experiences accessible for all patrons, and we are delighted to provide a number of services to assist you. Krannert Center is equipped with an assisted listening system, wheelchair-accessible and no-step/few-step seating, and large-print programs, Braille programs, and American Sign Language interpreters are available with three weeks' advance notice.

For assistance regarding your visit, please email:

Para ayuda en relación con su visita, favor de enviar un email a:

Pour vous aider dans votre visite, prière de nous envoyer un courriel à:

欢迎! 如若您对您的造访需要帮助, 请发送电子邮件至:

स्वागत है! अगर आपको अपने रहने के लिए मदद चाहिए, ईमेल कीजिए:

환영합니다! 방문에 관해 도움이 필요하실 때에는 ...
에게 이메일로 문의하시기 바랍니다:

PATRONSERVICES@KRANNERTCENTER.ILLINOIS.EDU
217.333.9716



COME AS YOU ARE. LEAVE DIFFERENT.



U of I students, come on in. In whatever clothes, whatever state of mind, from whatever world of experience, you are welcome here. We don't have a dress code, we don't have an opinion code, and we want the Center to be your kind of place. Because of the vital support of Krannert Center donors and the Krannert Center U of I student fee, U of I students never pay more than \$10 for a ticket, and dozens of events each year are completely free.

Your presence helps to make Krannert Center a place like nowhere else—and what you can experience here makes your education like nobody else's. If you are inspired by what you find here, invite others to join you.

When you come to Krannert Center, we promise that you'll leave different: refreshed, reaffirmed, renewed!

I