



**THE STRANGE UNDOING OF PRUDENCIA HART**

By David Grieg, co-created with Wils Wilson

Wednesday, March 1–Friday, March 3, 2023, at 7:30pm

Saturday, March 4, at 2:00pm and 7:30pm

Studio Theatre

---

# PROGRAM

## **THE STRANGE UNDOING OF PRUDENCIA HART**

Written and co-created by David Greig

Directed and co-created by Wils Wilson

*A revival of the original National Theatre of Scotland commissioned production, produced by Double M Arts & Events, LLC and The Royal Lyceum Theatre Edinburgh*

### **CAST**

Ewan Black

Charlene Boyd

Natali McCleary

Charlie West

Gavin Jon Wright

### **WRITER & CO-CREATOR**

David Greig

### **DIRECTOR & CO-CREATOR**

Wils Wilson

### **DESIGNER**

Georgia McGuinness

### **MUSICAL DIRECTOR**

Alasdair Macrae

### **MOVEMENT DIRECTOR**

Janice Parker

### **ASSOCIATE MOVEMENT DIRECTOR**

Jack Webb

### **ASSOCIATE DIRECTOR (SCOTLAND)**

Andrea Cabrera Luna

### **ASSOCIATE DIRECTOR (US)**

Hunter Bird

### **PRODUCERS**

Neil Murray and Michael Mushalla for Double M Arts & Events

The Royal Lyceum Theatre Edinburgh

### **CASTING DIRECTOR**

Laura Donnelly CDG

### **PRODUCTION MANAGER**

Craig Fleming

### **COSTUME SUPERVISOR**

Ailsa Munro

### **COMPANY STAGE MANAGER**

Millie Hannah Jones

### **ASSISTANT STAGE MANAGER**

Scott Ringan

*Recommended for ages 14 and up*

## THANK YOU FOR SPONSORING THIS PERFORMANCE

With deep gratitude, Krannert Center thanks all 2022-23 Patron Sponsors and Corporate and Community Sponsors, and all those who have invested in Krannert Center. Please view their names later in this program and join us in thanking them for their support.

This event is supported by:



"Our favorite sights and sounds are found at  
Krannert Center, and new favorites await us"  
—Sarah Spaulding, Endowed Sponsor



**JOAN & PETER HOOD**

*Endowed Co-sponsors*

Twenty-six Previous Sponsorships

Five Current Sponsorships



**ILLINI STUDIO**

Corporate & Community  
Bronze Sponsor



**DIXIE & EVAN DICKENS**

Thirty-six Previous Sponsorships  
One Current Sponsorship

# PROFILES



## EWAN BLACK

Training: Bristol Old Vic Theatre School. Peter O'Toole Prize Winner 2015/16.

Theatre credits include: *James IV: Queen of the Fight* (National Theatre of Scotland, RAW Materials); *Dr Semmelweis*, *A Christmas*

*Carol*, *Sleeping Beauty*, *Grinning Man* (Bristol Old Vic Theatre); *The Grinning Man*, *West End Transfer* (Bristol Old Vic, Trafalgar Studios); *Signal Fires*, *Nat-Die 2020* (Fuel Theatre, Eden Court); *Romeo and Juliet* (Bath Theatre Royal); *Treats* (Tobacco Factory, Brewery); *The Comedy of Errors* (Tour, Edinburgh Fringe - Assembly).

Television/Film credits include: *Matilda the Musical* (TriStar Productions, Working Title Netflix); *The Crown* (Left Bank, Sony Pictures, Netflix); *The Grinning Man AR Motion Capture* (Imaginarium Studios); *Bobby in Company*, *The Sound of Musicals* (BBC)

Ewan is also a film director and director of photography; his latest works include *Baked Beans* (BFI Network 2021 in collaboration with Bigger Picture Productions and Ellen Spence).



## CHARLENE BOYD

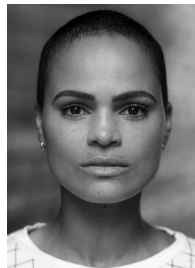
Theatre credits include: *The Ticket Meister*, *Cranhill Carmen* (Oran Mor); *Monstrous Heart* (Traverse); *The Macbeths*, *Fever Dream - Southside* (Citizens Theatre); *Kind of Silence* (Solar Bear Theatre); *Bondagers* (The Lyceum); *The Devil's Larder*, *Letters Home*, *Barflies* (Grid Iron Theatre

PHOTO: JESS HARDWICK

Company); *Men Should Weep*, *Empty*, *The Miracle Man* (National Theatre of Scotland).

Television credits include: *Mayflies*, *Crime S2*, *The Control Room*, *Annika*, *River City*, *The Macbeths*, *The Trial of Christine Keeler*, *Medical Hospital UK*, *Sketchland*, *Only An Excuse*, *Scot Squad*, *Garrow's Law*, *Taggart*, *Bob Servant Independent*.

Nominated for Best Actress as Lady Macbeth at the CATS Awards 2019.



## NATALI MCCLEARY

Theatre credits include: *Frankenstein* (Horsecross Perth); *Cadaver Police in The Electrocution Afterlife* (National Theatre of Scotland); *The Dark Carnival* (Vanishing Point). Television credits include: *Mayflies*, *The Control Room*, *Jamie Johnson*, *Guilt*.

Natali is currently under new writing commission with the National Theatre of Scotland and Stellar Quines. Her play *Thrown* (Dir. Johnny McKnight) will be presented by the National Theatre of Scotland at the Edinburgh International Festival after a tour of Scotland in summer 2023.



## CHARLIE WEST

Trained at Edinburgh Napier University

Theatre credits include: *An Edinburgh Christmas Carol* (The Royal Lyceum Theatre, Edinburgh); *Celtic the Musical* (Altereian Media); *A War*

of *Two Halves and Sweet FA* (This is My Story Productions); *Thread* (Kick the Door), *Orphans* and *The Cheviot, the Stag, and the Black, Black Oil* (National Theatre of Scotland); *A Christmas Carol* (Dundee Rep); *Jock's Jocks* (Celtic Connections); *A Night at Stobbs* (New Celts Productions); *Lysistrata*, *War in America*, and *The Threepenny Opera* (The Attic Collective).

Television/Film credits include: *F.O.H. The Mockumentary* (web series), *Singulars* (short film), *Kicking Practice* (short film), *365 Stories* (audiobook).



PHOTO: JESS HARDWICK

### **GAVIN JON WRIGHT**

Trained at Coatbridge College.

Theatre credits include: *A New Life*, *Ring Road*, *The Empty Charcoal Box* (Oran Mor); *Square Go* (Francesca Moody Productions @ Summerhall/59 e 59 New York); *Trainspotting* (Citizens Theatre); *Dragon*

(Vox Motus, National Theatre of Scotland); *Black Watch* (National Theatre of Scotland); *The Lying Kind*, *Ulysses*, *Scenes Unseen* (Tron Theatre); *The Secret Garden*, *Titus* (Red Bridge Arts); *Jack & The Beanstalk*, *Jamie & The Unicorn* (Ayr Gaiety); *Whisky Galore! - A Musical*, *The Servant o' Two Maisters*, *The Life of Stuff* (Pitlochry Festival Theatre); *A Respectable Widow Takes to Vulgarly* (Traverse/59 e 59 New York); *Decky Does a Bronco* (Grid Iron); *Spring Awakening* (Grid Iron/Traverse); *Titus*, *Cinderella*, *Sleeping Cutie* (MacRobert); *Potterrow*, *Snow White* (Cumbernauld Theatre).

Television credits include: *Unfair*, *Annika*, *Queen of the New Year*, *River City*, *In Plain Sight*, *Shetland*, *Still Game*, and *Dear Green Place*. Radio credits include: *44 Scotland Street*, *Moyamensing*.

### **DAVID GREIG**

Writer and Co-creator

David Greig is a multi-award-winning playwright who became the Artistic Director of the Royal Lyceum Edinburgh in 2015. David's most notable plays include *The Events*, *The Strange Undoing of Prudencia Hart*, *Midsummer*, *Dunsinane*, and *Europe*. More recently, David's stage adaptation of *Solaris*, based on Stanislaw Lem's 1961 Soviet science fiction novel, was co-produced by the Lyceum, Malthouse Theatre in Melbourne Australia and the Lyric Hammersmith. In 2019, David teamed up with original creators Bill Forsyth and Mark Knopfler to adapt the international hit film *Local Hero* for the stage—this premiered in Edinburgh and opened at the Old Vic in London in June 2020. David's stage adaptation of Joe Simpson's best-selling 1988 memoir *Touching the Void*, which was co-produced by the Lyceum and Bristol Old Vic, enjoyed a run at the Duke of York in London's West End in 2019–20. His other adaptations previously seen on the Lyceum stage include Strindberg's *Creditors* (2018) and Aeschylus' *The Suppliant Women* (2016). David wrote the book for *Charlie and the Chocolate Factory*, which opened in the West End in 2013 and then transferred to Broadway in 2017. His adaptation of Dr Seuss' *The Lorax* opened at the Old Vic for Christmas 2015.

### **WILS WILSON**

Director & Co-creator

Wils Wilson is a theatre maker and director based in Scotland. Having started her directing career as half of renowned site-specific duo wilson+wilson, she continues to balance large-scale building based work with other projects in theatre, film and audio. She is Associate Director at the Lyceum, where her work includes the

award-winning productions of *Life is a Dream* and *Wind Resistance* with Karine Polwart (and Edinburgh International Festival); *Red Ellen*, *Cockpit*, *Twelfth Night*, and *The Hour We Knew Nothing of Each Other*. Her other directing work includes productions for the National Theatre, National Theatre of Scotland, National Theatre Wales, Welsh National Opera, Royal Court, and Manchester Royal Exchange. She is co-founder of the experimental company ghostbag for whom she recently co-directed her first short film with Eszter Marsalko. Her work with musicians includes music videos for Meilyr Jones, audio drama podcasts *The Portal* and *Keli* with writer/composer Martin Green, and live theatre/music shows *Praxis Makes Perfect* and *Candylyon* with Gruff Rhys. She has been the recipient of numerous awards including a Drama Desk Award for the 2017 New York run of *The Strange Undoing of Prudencia Hart*. [www.wilswilson.com](http://www.wilswilson.com)

## GEORGIA MCGUINNESS

Designer

Georgia trained at Motley in London. After working as a theatre designer for 18 years, she also became a midwife 10 years ago. She is currently working on a production of *Macbeth* with Wils Wilson for the Royal Shakespeare Company. Previous work includes: *Life is a Dream* (Royal Lyceum Theatre Edinburgh); *365*, *Miracle Man*, and *Empty* (National Theatre of Scotland); *Midsummer*, *Perfect Days*, and *Abandonment* (Traverse); *Arabian Nights* (Royal Shakespeare Company); *Curse of the Starving Class* (The Lyceum); *Yarn* (Gridiron, Dundee Rep); *Helter Skelter* (Tramway); *Crave* (Paines Plough, Royal Court); *Arabian Nights* (Young Vic); *The Cosmonaut's Last Message to the Woman He Once Loved in the Former Soviet Union*, *Sleeping Around*, and *Crazy Gary's Mobile Disco* (Paines Plough); *Caravan* (National Theatre of Norway);

*Afore Night Come* (Theatre Clwyd); and *The Weavers* (Gate Theatre).

## ALASDAIR MACRAE

Musical Director

Alasdair Macrae trained at Langside College, Glasgow. Theater credits include: *Twelfth Night*, *The Winter's Tale*, *Cockpit*, and *The Beggar's Opera* (The Lyceum); *Skellig* (Hawth, Crawley); *The Cheviot, the Stag and the Black, Black Oil* and *The James Plays* (National Theatre of Scotland); *Fergus Lamont*, *The Government Inspector* (Communicado); *Interiors*, *Subway*, and *Invisible man* (Vanishing Point). Television credits include: *For the Love of Leo*. Alasdair received Critics' Awards for Theatre in Scotland (CATS) nominations for Best Music and Sound nominations for: *Subway*, *Interiors*, *The Government Inspector*, and *The Strange Undoing of Prudencia Hart*.

## JANICE PARKER

Movement Director

Janice Parker is an independent dance maker based in Edinburgh, Scotland. She works across art forms, in collaboration, and often outside the mainstream. Her focus is with the bodies natural capacity for movement, and on creating art as public, personal and collective engagement. Janice also regularly teaches, mentors and shares practice. Theatre credits include: *Life Is A Dream*, *The Hour We Knew Nothing of Each Other*, *Wind Resistance*, *Glory On Earth* (The Lyceum); *Medea* (Edinburgh International Festival/National Theatre of Scotland); *The View From Castle Rock*, *Age of Arousal*, *The Girls of Slender Means* (Stellar Quines); *Crazy Jane* (Birds of Paradise) *Endurance* (A Moments Peace); and *The Maw Broon Monologues* (Glasgay). Dance credits include: *Not Brittle, Not Rigid*,



*Not Fixed* (Edinburgh Art Festival); *Small Acts of Hope and Lament* (Edinburgh International Festival); *Writing The Body* (National Galleries of Scotland); *Glory, What Would Richard Do?*, *You Said You Liked The Dancing*, *Private Dancer* (Janice Parker Projects); *The Living Room Dances* (The Albert Drive Project); *Red Berries and Lost Love* (Tanz die Toleranz); and *Under A Clear Blue Sky* (Residance). Awards include: Saltire Society Outstanding Woman of Scotland; Herald Angel Award; Creative Scotland Award. [www.janiceparker.co.uk](http://www.janiceparker.co.uk)

## **JACK WEBB**

Associate Movement Director

Jack is an award-winning choreographer, movement director, dancer, and teacher working across dance, theatre, opera, and film. He is based in Edinburgh and has been working internationally for the past 16 years. Recent movement direction credits include movement direction/choreography for *L'etoile*, an opera by Emmanuel Chabrier, directed by PJ Harris for the Royal Conservatoire of Scotland; Fringe First-winning *Silkworm* by Vlad Butucea for Pearlfisher, directed by Mojisola Elufowoju; and for the CATS award-winning *I Am Tiger* by Oliver Emmanuel for Perth Theatre and Imagineate, directed by Lu Lemp. Jack's recent creation *Sense of Centre*, a solo dance work, was part of the Made in Scotland showcase at the Edinburgh Festival Fringe 2022 and was nominated for a Scotsman Mental Health Fringe Award. Jack is a movement/physical performance lecturer at the Royal Conservatoire of Scotland and he sits on the board of trustees of Edinburgh based charity Heart and Minds.

## **ANDREA CABRERA LUNA**

Associate Director (Scotland)

Andrea Cabrera Luna is the artistic director of Anahat Theatre. She read directing at the Royal Conservatoire of Scotland. Andrea won the Mexican FONCA scholarship to read an MA in performance and culture at Goldsmiths College, University of London. She holds a BA in acting from the National School of Performing Arts (ENAT) and a BA in English literature from the National Autonomous University of Mexico (UNAM). Directing credits include: *Instructions on How to Cry* (work in progress), Lyceum Studio; *Pig Head*, by Katy Nixon, Traverse Theatre; *The Arsonists*, by Max Frisch, Royal Conservatoire of Scotland; *Scenes from The Duchess of Malfi*, Shakespeare's Globe, London; *Hotel Juárez*, by Víctor Hugo Rascón Banda, University of Edinburgh/Assembly Roxy; *I Am That Girl*, by Andrea Cabrera Luna Scottish Storytelling Centre; *Waterfront Wasteland*, Medea; *Material Landscape with Argonauts*, by Heiner Müller, Etcetera Theatre, London. Assistant Director credits include: *Would You Bet Against Us?* (Additional role of Script Coordinator), *Told by an Idiot*, 2022; *Charlie and Stan*, directed by Paul Hunter; *Told by an Idiot*, 2021; *Life is a Dream*, 2020; *Lyceum Christmas Tales*, Lyceum Theatre Edinburgh. [anahattheatre.com](http://anahattheatre.com)

## **HUNTER BIRD**

Associate Director (US)

Hunter is a Brooklyn-based director, writer, and maker of new work. Directing credits include *Ars Nova*, Roundabout Theatre Company, Chicago Shakespeare Theater, The McKittrick Hotel, Signature Theatre, Village Theatre, The Getty Villa, 59E59, NAMT Festival, Edinburgh Fringe Festival, and Skylight Theater. Associate/assistant director credits include Broadway, Manhattan

Theatre Club, Center Theater Group, La Jolla Playhouse, Shakespeare Theatre Company, Geffen Playhouse, and National Tours. Book writing credits: *The Golden Record* (Angela Sclafani), *She Reached for Heaven* (Oliver Houser), and *The Pansy Craze* (Mason Alexander Park). Writing residencies at Goodspeed Musicals, Warren Miller Performing Arts Center, and Rhinebeck Writer's Retreat. Jonathan Alper Directing Fellow (MTC, 2017 & 2019), The Civilians R&D Group (18/19), the Samuel J. Friedman Assistantship (MTC, 2015), SDCF Observership (2013), UCLA Emerging Director Award (2011), Gilbert Cates Fellowship (2009), Line Producer of ANT Fest – Ars Nova. Current/Upcoming: *Beetlejuice the Musical* (Assistant Director, First National Tour), *The Strange Undoing of Prudencia Hart* (Associate Director, National Tour/ McKittrick Hotel), and *The Other Side of Paradise* (Upcoming NYC). [www.hunter-bird.com](http://www.hunter-bird.com)

## LAURA DONELLY CDG

Casting Director

Theatre credits include: *James IV: Queen of The Fight* (Raw Material/Capital Theatres); *Medea* (NTS/EIF); *Exodus* (NTS); *Enough of Him* (NTS/ Pitlochry Festival Theatre); *Orphans* (NTS); *The Strange Undoing of Prudencia Hart* (Double M Arts/ Royal Lyceum); *Paddington's Marmalade Messiness* (Histrionic Productions); *Solaris* (Malthouse Theatre/ Lyric Hammersmith/ Royal Lyceum); *Terrestrial Salvation* (National Theatre of Scotland (NTS)/Royal Court); *Rhinoceros & Mrs Puntila* (DOT Theatre/ Royal Lyceum); *Twelfth Night* (Bristol Old Vic/Royal Lyceum); *Cockpit* (Royal Lyceum); *Hayfever* (Citizens Theatre/Royal Lyceum); *Them!* (NTS); *The Cheviot* (NTS/ Dundee Rep); *Cyrano De Bergerac* (NTS/Citizens Theatre/ Lyceum); *Midsummer* (NTS/EIF); *My Left Right Foot* (NTS/ BOP); *A Winter's Tale* (Royal Lyceum); *This Restless House* (Citizens Theatre/NTS/

EIF); *How To Act* (NTS); *The 306 Trilogy: Dawn, Day, Dusk* (NTS/Perth Theatre); *Our Ladies of Perpetual Succour* (NTS/Live/ Sonia Friedman/UK/ National Theatre/Duke of Yorks); *The James Plays* (NTS/National Theatre/EIF, UK/International); *The Strange Undoing of Prudencia Hart* (New York,UK/US); *Let the Right One In* (UK/US/Abbey Theatre); *Anything That Gives Off Light* (NTS/The TEAM/EIF). *The Driver's Seat* (NTS)

Film and TV credits include: *Murder Island* (Channel 4/ STV Studios); *Tetris* (Marv Studios/ AI Film/Sigma/Unigram); *Adam* (NTS/Hopscotch Films/BBC Arts); *Jekyll & Hyde* (NTS/Selkie/Sky Arts); *Scenes for Survival* (BBC Scotland/ NTS)

Laura is a UK- and Europe-based casting director working across all media. She is represented by Jess Alford at United Agents. [www.unitedagents.co.uk/laura-donnelly-cdg](http://www.unitedagents.co.uk/laura-donnelly-cdg)

## THE ROYAL LYCEUM THEATRE EDINBURGH

Artistic Director: David Greig

Executive Director: Mike Griffiths

The Royal Lyceum Theatre Edinburgh is the leading producing theatre in Scotland and one of the United Kingdom's most prolific theatre companies.

The Lyceum's beautiful, intimate Victorian theatre was built in 1883 and has played a significant role in the cultural and creative life of the city and surrounding area for over 140 years. Since 1965, the current Lyceum company has developed a reputation for innovative, high-quality theatre, drawing upon the considerable talent in Scotland as well as developing award-winning work with partners across the globe to make theatre in Edinburgh that can speak to the world. We believe that making and watching theatre together is life enhancing. We are committed to being a theatre rooted in our community, a



truly civic theatre entertaining, challenging, and inspiring all the people of Edinburgh. To reach the widest possible audience we find new ways to open our doors and stage to the public, as well as reaching out into Edinburgh's schools and neighborhoods with a range of programs taking place beyond our walls. Under Artistic Director David Greig, The Lyceum has continued to seek out new artistic partnerships, casting hundreds of local citizens in our main stage production of *The Hour We Knew Nothing of Each Other*, *The Suppliant Women* (the acclaimed production that opened David's first season), and *An Edinburgh Christmas Carol*. Since then, we have made work with Malthouse Theatre, Melbourne; DOT Theatre, Istanbul; Bristol Old Vic; National Theatre of Scotland; Citizens Theatre; Scottish Dance Theatre; Stellar Quines; The Old Vic, Lung Ha Theatre Company, and Fuel.

For the latest information about The Lyceum visit [lyceum.org.uk](http://lyceum.org.uk)

## **DOUBLE M ARTS & EVENTS**

Double M Arts & Events, LLC serves as Creative Producer for some of the most captivating performing artists working today. Formed in 1999 by Michael Mushalla, the company specializes in work with the top creators across the disciplines of theater, dance, music, and illusion. This production of *The Strange Undoing of Prudencia Hart* is managed by Neil Murray and Michael Mushalla. On behalf of the creative team, performers, crew, and co-producers, we want to thank the Krannert Center for the Performing Arts for making this presentation possible, and also thank you, the audience, for giving us this incredible opportunity to perform.

[double-m-arts.com](http://double-m-arts.com)

---

## **Land Acknowledgement**

The University of Illinois System carries out its mission in its namesake state, which includes the traditional territory of the Peoria, Kaskaskia, Piankashaw, Wea, Miami, Mascoutin, Odawa, Sauk, Mesquaki, Kickapoo, Potawatomi, Ojibwe, Menominee, Ho-Chunk, and Chickasaw Nations. These lands continue to carry the stories of these Nations and their struggles for survival and identity.

As a land-grant institution, the University of Illinois has a particular responsibility to acknowledge the peoples of these lands, as well as the histories of dispossession that have allowed for the growth of this institution for the past 150 years. We are also obligated to reflect on and actively address these histories and the role that this university has played in shaping them. This acknowledgement and the centering of Native peoples is a start as we move forward for the next 150 years.

Krannert Center affirms the commitment by the university to move beyond these statements, toward building deeper relationships and taking actions that uphold and preserve Indigenous rights and cultural equity.

As we gather to experience this performance, we have an opportunity to reflect on the ways that systems of oppression have shaped our society. We can work together to create systems that support human dignity, establish equity, strengthen cross-cultural relationships, and draw upon the creative capacity of all people that make up this community, state, nation, and world.



# INVEST IN THE FUTURE OF THE ARTS

Support Krannert Center today



---

### **Connecting People, Creating Happiness**

Krannert Center is committed to providing programs that inspire, engage, challenge, and revitalize. The support of our donors and friends enables the Center to bring in diverse international artists and launch transformative initiatives that foster inclusivity and bring about dynamic change.

**Every contribution counts. Together, we can effect powerful change that will impact generations to come.**

Please consider making a gift to Krannert Center today. Together, we can strengthen the lasting impact of the Center's work, while ensuring that students and the greater community have access to enriching performances and cultural experiences.

Join us as we invest in the future of the arts.

### **Make Your Gift Today**

advancement@krannertcenter.illinois.edu • 217.333.6700  
KrannertCenter.com/Give

### **Would you like to make Krannert Center part of your legacy?**

Contact Cheryl Snyder (217.333.2533 | [casnyder@illinois.edu](mailto:casnyder@illinois.edu))  
or Bethany Whoric (217.300.6042 | [bbwhoric@illinois.edu](mailto:bbwhoric@illinois.edu)) to learn more  
about making a planned gift to Krannert Center for the Performing Arts.

---

# KRANNERT CENTER PHILANTHROPY AND ADVOCACY

Krannert Center’s dedication to the celebration, exploration, and cross-pollination of the arts is advanced through these special programs. Donors who champion such work make it possible for more people in our community to participate in life-affirming experiences.

## 2022-2023 ADVANCEMENT COUNCIL

This passionate group of arts advocates assists Krannert Center staff in expanding the Center’s leadership and financial resources.

### Co-Chairs:

Janet & Douglas Nelson  
Ghazala Ahmad  
Terry & Barbara England  
Michelle Gonzales  
Susan & Michael Haney  
Lisa & Mark Klinger

Leonard (Len) Lewicki  
Marina & Nenad Marjanovic  
Susan & Brendan McGinty  
Tracy Parsons  
Susan & Sam Reese  
Shandra Summerville

## 2022-2023 KRANNERT CENTER YOUTH SERIES

The Youth Series features daytime performances, online media created by performing artists, and educational activities designed especially for pre-K through high-school-aged students. Children who participate learn to appreciate the performing arts, gain knowledge, build social skills, and integrate live performance experiences into classroom work. Thank you to our Youth Series sponsors. If you’d like to learn how you can become a sponsor for the Krannert Center Youth Series, please contact Krannert Center Advancement at 217.333.6700 or [advancement@krannertcenter.illinois.edu](mailto:advancement@krannertcenter.illinois.edu).

Bernard and Prudence Spodek  
Endowed Fund  
Ann H. Bender Youth Series  
Endowment  
The Susan Sargeant McDonald  
Endowed Fund for Youth  
Programming (Suzi was  
the founder/developer  
of the Krannert Center  
Youth Series)  
Susan & Michael Haney  
Robert & Mary-Alayne Hughes

Jane & Christian Scherer  
Brenda & Stephen Pacey  
Jill & James Quisenberry  
Carol & Ed Scharlau  
Anne & David Sharpe  
Audrey Ishii & Charlie Smyth  
The Rotary Club of Champaign  
Illinois Arts Council  
National Endowment  
for the Arts

## 2022-2023 CAMPAIGN FOR YOUNG AUDIENCES

Through the Campaign for Young Audiences, students at the U of I enjoy \$10 tickets for nearly every event presented at Krannert Center while other college students and children receive significant discounts. If you’d like to learn how you can become a sponsor, please contact Krannert Center Advancement at 217.333.6700 or [advancement@krannertcenter.illinois.edu](mailto:advancement@krannertcenter.illinois.edu).

## Lead Sponsors



Phyllis Robeson & Family

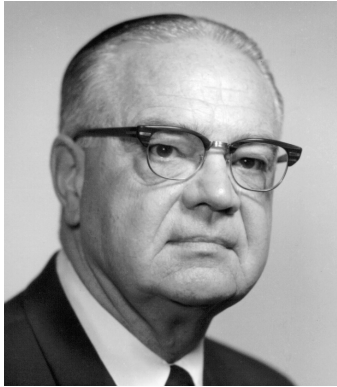
## Sponsors

Susan & Michael Haney Fund  
for Young Audiences  
Gertrude Brokaw McCloy  
Endowment  
Clarette & Zvi Ritz

Jennifer & Tom Dillavou  
Anke & Paul Tucker  
UpClose Marketing  
and Printing

## KRANNERT SOCIETY

The University of Illinois, the College of Fine and Applied Arts, and Krannert Center are profoundly grateful for the commitment of Krannert Society members. Through donations, pledges, and residual gifts of \$1 million or more, these open-hearted visionaries help build a thriving community and encourage cross-cultural understanding. Their support sustains the extraordinary vision of Herman and Ellnora Krannert to create a vibrant gathering place like no other.



**VALENTINE JOBST III** (1904-1993)  
March 1994



**CLAIR MAE ARENDS** (1912-2000)  
**G. WILLIAM ARENDS** (1914-1997)  
March 2000



**MARILYN PFLEDERER ZIMMERMAN**  
(1929-1995)  
**VERNON K. ZIMMERMAN**  
(1928-1996)  
November 2003



**HELEN FARMER**  
**JAMES FARMER** (1931-2020)  
April 2014



## FOELLINGER SOCIETY

Demonstrating their steadfast dedication to the arts, members of the Foellinger Society have donated or pledged \$500,000 to \$999,999. Because of their generosity, everyone in this community can unite in joyful and engaging experiences. These magnanimous arts lovers celebrate the spirit of Helene Foellinger, whose memorial gift honored her sister, Loretta Foellinger Teeple, and established the Marquee Performance Endowment.



AVIS HILFINGER (1915-2004)  
DEAN HILFINGER (1912-2006)  
April 2000



KENNETH ANDERSEN (1933-2020)  
MARY ANDERSEN  
August 2009



CAROLYN G. BURRELL  
April 2012



CAROLE & JERRY RINGER  
April 2014



**EDITH ANN STOTLER**  
(1946-2022)  
August 2017



**K. SARAH SPAULDING**  
(1930-2022)  
Feb 2017



**JANE BUFORD SCHERER & CHRIS  
SCHERER**  
June 2022



**DENA & JIM VERMETTE**  
June 2022

**IKENBERRY SOCIETY**

University of Illinois President Emeritus and First Lady Stan and Judy Ikenberry have long demonstrated their love for the arts and their deep commitment to enhancing learning experiences for all University of Illinois students. Krannert Center gratefully acknowledges their steadfast support by introducing the Ikenberry Society to recognize donated gifts or pledges of \$250,000 to \$499,999.



JUDITH & STANLEY IKENBERRY  
September 2014



JERALD WRAY & DIRK MOL  
March 2016



DAVID A. KROOKS  
August 2016



HELEN & DANIEL RICHARDS  
June 2016



HOLLY & KURT HIRCHERT  
February 2017



ANONYMOUS  
May 2018



JOAN & PETER HOOD  
November 2018



SUSAN & MICHAEL HANEY  
April 2019



**LYNN WEISEL WACHTEL  
& IRA WACHTEL**  
June 2019



**JOHN & KAY SHANER**  
July 2019



**LEONARD (LEN) LEWICKI**  
May 2021



**TIMOTHY TEMPLE & JERRY  
CARDEN**  
June 2022



**FRAN & MARC ANSEL**  
June 2022

## COLWELL SOCIETY

Dr. John B. Colwell, Pauline Groves Colwell, and R. Forrest Colwell provided critical funding for the Marquee Performance Endowment, and the Colwell Society gratefully acknowledges their invaluable assistance. Members have donated or pledged \$100,000 to \$249,999 for celebrating, preserving, and exploring the arts right here and around the globe.



**DOLORIS DWYER**  
(1918-1997)  
April 1996



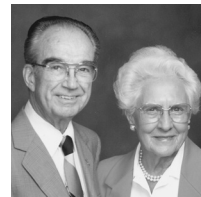
**EMILY GILLESPIE**  
(1909-2000)  
**JAMES GILLESPIE**  
(1905-1999)  
December 1996



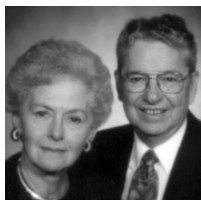
**ROSANN NOEL**  
(1932-2018)  
**RICHARD NOEL**  
April 1997



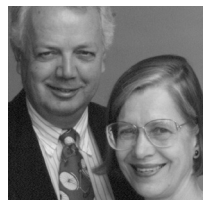
**JAMES W. ARMSEY**  
(1917-2008)  
**BETH L. ARMSEY**  
(1918-2019)  
February 1998



**LOIS KENT**  
(1912-1999)  
**LOUIS KENT**  
(1914-1994)  
October 2000



**JUNE SEITZINGER**  
(1928-2020)  
**GROVER SEITZINGER**  
(1925-2019)  
September 2001



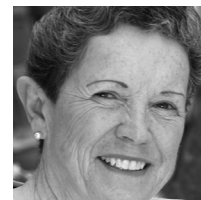
**RICHARD MERRITT**  
(1933-2005)  
**ANNA MERRITT**  
November 2006



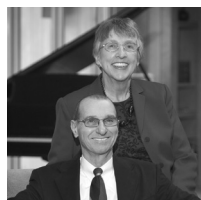
**JOHN PFEFFER**  
(1935-2017)  
**ALICE PFEFFER**  
November 2006



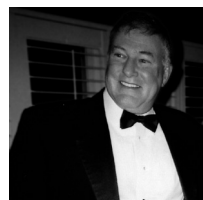
**ANONYMOUS**  
November 2006



**LINDA M. MILLS**  
(1940-2006)  
October 2007



**JUDITH & JON LIEBMAN**  
January 2008



**MICHAEL CARRAGHER**  
(1946-2009)  
September 2008

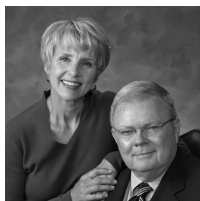


**VIRGINIA R. IVENS**  
(1922-2008)  
February 2009

**THE SUSAN SARGEANT MCDONALD ENDOWED FUND FOR YOUTH PROGRAMMING**  
Suzi was the founder/ developer of the Krannert Center Youth Series  
July 2010



**MISAHO & RICHARD BERLIN**  
October 2010



**DIANA & WARD  
MCDONALD**  
March 2011



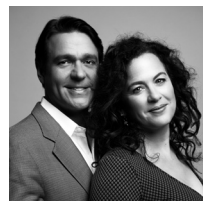
**GRACE & JOHN  
MICETICH**  
March 2011



**JO ANN TRISLER**  
(1946-2010)  
November 2011



**LEA GIESELMAN**  
(1932-2014)  
**BOB GIESELMAN**  
(1932-2015)  
April 2013



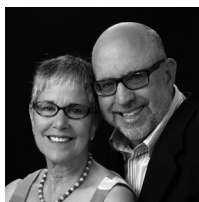
**JULIE & NATHAN  
GUNN**  
April 2014



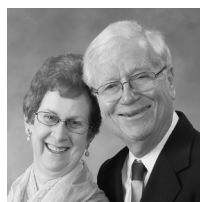
**MICHAEL SWINDLE**  
April 2014



**ANONYMOUS**  
November 2015



**LINDA WEINER**  
(1944-2021)  
**BARRY WEINER**  
February 2017



**ANNE MISCHAKOFF  
HEILES & WILLIAM  
HEILES**  
May 2017



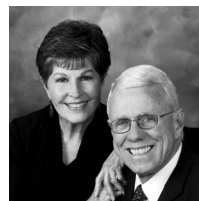
**JILL & JAMES  
QUISENBERRY**  
May 2017



**DALE STEFFENSEN**  
(1922-2018)  
**MARGARET  
STEFFENSEN**  
June 2017



**CECILE & IRA  
LEBENSON**  
December 2017



**BURT SWANSON**  
(1939-2020)  
**IRIS SWANSON**  
December 2017



**TERRY & BARBARA  
ENGLAND**  
April 2018



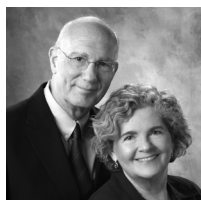
**PHYLLIS ROBESON  
& FAMILY**  
February 2019  
**KYLE ROBESON**  
(1929-2021)





**JAMES R. FRAME  
& CANDACE PENN  
FRAME**

April 2019



**MICHAEL &  
MARGARET ROSSO  
GROSSMAN**

July 2019



**PATRICIA & ALLAN  
TUCHMAN**

April 2021



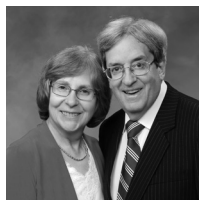
**VICTOR FELDMAN  
(1935-2018)  
JUDITH FELDMAN**

(1938-2021)  
September 2021



**SUSAN & RICHARD  
SCHNUER**

November 2021



**JUDITH & RICHARD  
KAPLAN**

February 2022



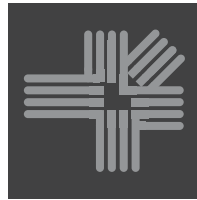
**KATHRYN I. SEYBERT  
& MICHAEL J.  
ANDRECHAK**

June 2022



**PATRICIA PLAUT &  
KENNETH SUSLICK**

October 2022



**JAYNE & RICHARD  
BURKHARDT JR.**

January 2023

---

*Donations by society members include estate gifts; outright donations; charitable gift annuities; charitable remainder trusts; gifts of real estate, insurance, and securities; and pledges fulfilled over a period of five years. To explore how you can create your own lasting legacy, contact us at 217.333.6700 or [advancement@krannertcenter.illinois.edu](mailto:advancement@krannertcenter.illinois.edu).*

**2022-2023 MARQUEE CORPORATE & COMMUNITY SPONSORS**

Corporate and community support—both cash and in-kind—deepens Krannert Center’s capacity to inspire public discourse, communal respect, and collective joy. Please join Krannert Center in thanking the following corporate and community sponsors for their support of Krannert Center performances and initiatives.

---

**Corporate & Community Platinum Sponsors**  
(\$30,000 OR MORE)



**Corporate & Community Lead Gold Sponsors**  
(\$20,000-\$29,999)



**Corporate & Community Gold Sponsors**  
(\$10,000-\$19,999)



**TO JOIN THIS POWERFUL NETWORK** of like-minded professionals while receiving guaranteed visibility and marketing benefits, visit [KrannertCenter.com/Give](http://KrannertCenter.com/Give) or contact Bethany Whoric at 217.300.6042 or [bbwhoric@illinois.edu](mailto:bbwhoric@illinois.edu).

# 2022-2023 GRANTS



DORIS DUKE  
CHARITABLE FOUNDATION

## DORIS DUKE CHARITABLE FOUNDATION

Endowment support from the Doris Duke Charitable Foundation continues to enhance Krannert Center’s presentation of diverse, world-class national and international visiting artistry; supporting the creation of new work; and increasing engagement and collaboration across campus.



## ILLINOIS ARTS COUNCIL

The Illinois Arts Council Agency provides general programing support to ensure that audiences of all ages have direct access to world-class theatre, dance, and music.

## FRANCES P. ROHLEN VISITING ARTISTS FUND/ COLLEGE OF FINE + APPLIED ARTS

This grant, a generous gift from the Rohlen Family.



THIS PROJECT FUNDED BY  
STUDENT SUSTAINABILITY COMMITTEE

## THE STUDENT SUSTAINABILITY COMMITTEE

The Student Sustainability Committee provided funding for the Krannert Center Audiences Lighting Retrofit Project, which continues to increase energy efficiency, decrease labor requirements, and improve safety conditions.



Center for  
Advanced  
Study

## GEORGE A. MILLER ENDOWMENT PROGRAMS COMMITTEE

The George A. Miller Endowment Programs Committee supports CultureTalk.

## THE AUGUSTINE FOUNDATION

### THE AUGUSTINE FOUNDATION

The Augustine Foundation provides continued major support for ELLNORA | The Guitar Festival.

MARQUEE PATRON SPONSORS

Krannert Center is grateful for the passion and commitment of the following individuals whose gifts support the expansive range of experiences offered at Krannert Center: formative moments for tomorrow’s global leaders, performances that comfort and transform, opportunities to create and enjoy groundbreaking work, engagement activities that offer self-discovery and hope, architectural treasures to delight the senses, and remarkable moments to foster lifelong memories. If you’d like to learn more about how to become a sponsor, please contact Krannert Center Advancement at 217.333.6700 or advancement@krannertcenter.illinois.edu.

Endowed Underwriters  
(\$10,000 OR MORE PER EVENT)

Clair Mae & G. William Arends  
Avis & Dean Hilfinger  
Judith & Stanley Ikenberry  
Valentine Jobst III  
Edith Ann Stotler  
Marilyn Pflederer & Vernon K. Zimmerman

Jo Ann Trisler  
Pat & Allan Tuchman

Campaign for Young Audiences

Anonymous  
Jennifer & Tom Dillavou  
Susan & Michael Haney Fund for Young Audiences  
Gertrude Brokaw McCloy Endowment  
Clarette & Zvi Ritz  
Phyllis Robeson & Family  
Anke & Paul Tucker  
UpClose Marketing and Printing

Endowed Sponsors  
(\$5,000-\$9,999 PER EVENT)

Mary & Kenneth Andersen  
Beth & James Armsey  
Doloris Dwyer  
Terry & Barbara England  
Helen & James Farmer  
Joan & Peter Hood  
Lois & Louis Kent  
Carole & Jerry Ringer  
June & Grover Seitzinger  
Sarah K. Spaulding  
Bernard and Prudence Spodek Endowed Fund

Patron Underwriters  
(\$10,000 OR MORE PER EVENT)

Anne Slichter  
Susan & Robert Welke

Patron Sponsors  
(\$5,000-\$9,999 PER EVENT)

Carol & Willis Colburn  
Dixie & Evan Dickens  
Beverly & Michael Frieze  
Lois & Ernest Gullerud  
Ann Mischakoff Heiles & William Heiles  
Judith & Richard Kaplan  
Cecile & Ira Levenson  
Judith & Jon Liebman  
Lois & Robert Resek  
Marlyn Rinehart  
Trent Shepard  
Iris & Burton Swanson  
Shirley & Arthur Traugott

Endowed Co-sponsors  
(\$2,500-\$4,999 PER EVENT)

Ann H. Bender Youth Series Endowment  
Robert Bender  
Victor & Judith Feldman  
Lena & Bob Gieselman  
Emily & James Gillespie  
Margaret Rosso Grossman & Michael Grossman  
Virginia R. Ivens  
Anna Merritt  
The Susan Sargeant McDonald Endowed Fund for Youth Programming (Suzi was the founder/developer of the Krannert Center Youth Series)  
Joanne & Charles McIntyre  
Mildred Maddox Rose  
Kay & John Shaner

Patron Co-sponsors  
(\$2,500-\$4,999 PER EVENT)

Ghazala Ahmad  
Amy & Matthew Ando  
Frances & Marc Ansel

Dianna Armstrong  
Jim Barrett  
Sherry & Nelson Beck  
Robert Bender  
Timothy Temple & Jerry Carden  
Beth & David Chasco  
Harriet & Herschel Cline  
Emmie Fisher  
Susan & Michael Haney  
Janice Bahr & Erwin Hoffman  
Peggy & Christopher Huson  
Diane Gottheil  
Marianne Kalinke  
Lisa & Mark Klinger  
Leonard (Len) Lewicki  
Ann & Stephen Long  
Kathryn & Stephen Marshak  
Gigi & Frank Miles  
Jerald Wray & Dirk Mol  
Martha & Thom Moore  
Claudia Reich & Gary Olsen  
Brenda & Stephen Pacey  
Dr. Jan Marie Aramini & Michael Pettersen  
Jill & James Quisenberry  
Mildred Maddox Rose  
Deborah & Stephen Rugg  
Anne & David Sharpe  
Carol & Franklin Shupp  
Mary Schuler & Stephen Sligar  
Margaret Stillwell  
Masako Takayasu  
Nancy & Edward Tepper  
Joan & Walter Tousey  
Pat & Allan Tuchman  
The Weiner Family  
Sarah Wigley  
Karen & William Wilkinson  
Sarah & Charles Wisseman

HELP ENSURE THE IMPACT OF THE ARTS for future generations by becoming a donor today. Visit [KrannertCenter.com/Give](http://KrannertCenter.com/Give), contact us at 217.333.6700 or [advancement@krannertcenter.illinois.edu](mailto:advancement@krannertcenter.illinois.edu).

## MARQUEE CIRCLE AND LOOP MEMBERS

We gratefully acknowledge these individuals and businesses for their generosity and commitment to the arts. Their support enabled the Center to welcome back in-person audiences for Music, Theatre, Dance, and visiting artist productions this past season. Krannert Center continues to make accessibility improvements, co-commission works to help support artist partners, and focus on engagement work within the community. If your membership has lapsed and you'd like to renew, please contact Krannert Center Advancement at 217.333.6700 or [advancement@krannertcenter.illinois.edu](mailto:advancement@krannertcenter.illinois.edu).

[LIST CURRENT AS OF OCTOBER 20, 2022]



Ghazala Ahmad  
Melissa Huff & Richard Alkire\*  
Walter Alspaugh  
Nadja & Carl Altstetter  
Ruth & James Anderson  
Colleen Chon & Quintin Anderson  
Amy & Matthew Ando  
Kathryn Seybert & Michael Andrechak  
Frances & Marc Ansel\*  
Dianna Armstrong\*  
Barbara E. Barnes  
Jim Barrett  
Tangül & Tamer Basar  
Diane A. Tasca & Norman Beamer  
Sherry & Nelson Beck  
Dorothy Bell  
Erica & Alessandro Bellina  
Carol Berthold  
Mary Blair  
Doug Blair  
Marsha Clinard & Charles Boast  
Abbie & Mike Broga  
Elizabeth & Michael Brunk  
Annette & John Buckmaster  
Joyce & Rabel Burdge  
Jayne & Richard Burkhardt Jr.  
Carolyn G. Burrell  
Ann & Roy Campbell  
Helen & Andreas Cangellaris  
Timothy Temple & Jerry Carden  
Nancy & Allen Carter  
Beth & David Chasco  
Kathleen & Felix Cimasky  
Harriet & Herschel Cline  
Carol & Willis Colburn

Casey Sutherland & Linda Coleman  
Tina & John Colombo  
Jongin & Robert Craggs  
Janis Chadsey & Al Davis  
Deborah Day  
Elizabeth Cardman & Paul Debevec  
Richard DeLong  
Dixie & Evan Dickens\*  
Jennifer & Tom Dillavou  
Anastasia & James Economy  
Ann Einhorn  
Paul Ellinger  
Jo & Thomas Emerson  
Terry & Barbara England  
Karen & Michael Folk  
Shari & Ben Fox  
Beverly & Michael Friese  
Michael Fuerst  
Nancy & Bert Fuller  
Victoria Christensen & Gary Gladding  
Melanie Loots & George Gollin\*  
Shirley Soo & Matthew Gorman  
Diane Gottheil  
Ondine & George Gross  
Margaret Rosso Grossman & Michael Grossman  
Lois & Ernest Gullerud  
Julie & Nathan Gunn  
Susan & Michael Haney  
Sharon & Terence Harkness  
Ron Harshman  
Kathleen Harvey  
Clare & Alan Haussermann  
Jane Trishman Heaton  
Barbara & John Hecker\*  
Anne Mischakoff Heiles & William Heiles  
Jan & Bruce Hinely  
Ellen Hinterlong  
Holly & Kurt Hirschert  
Kathryn Rybka & Darrell Hoemann

Photography  
Janice Bahr & Erwin Hoffman  
Joan & Peter Hood\*  
Mary-Alayne & Robert Hughes  
Peggy & Christopher Huson  
Ingrid & Bruce Hutchings  
Laura & Gale Jamison  
Nancy Johnson  
Ronald Johnson  
Joan Volkmann & John Jones  
Martha Ann Jones  
Patricia & James Jurgens  
Patricia & Peter Kale  
Marianne Kalinke  
Judith & Richard Kaplan  
Nancy & Edward Karrels  
Paula Kaufman  
Josephine & Douglas Kibbee  
Brenda & Peter Kimble  
Lisa & Mark Klinger  
Antje & Edward Kolodziej  
Wynne Sandra Korr  
Sheila & Philip Krein  
Marion & Herman Krier  
David A. Krooks  
Nancy Parker & James Kuklinski  
Cecile & Ira Levenson\*  
Brenda Lerner-Berg  
Emily Levin  
Diana Sheets & Stephen Levinson  
Leonard (Len) Lewicki  
Kun Jiang & Xuan Li  
Judith & Jon Liebman  
Ann & Stephen Long  
Brenda & Morgan Lyng  
Marina & Nenad Marjanovic  
Kathryn & Stephen Marshak  
Leslie & Gary Mason  
Betsy Bachmann & Rebecca McBride  
Gertrude Brokaw McCloy Endowment  
Erica & Malcolm McClure



Carolyn and Dale McElrath  
 Susan & Brendan McGinty  
 Mrs. Jack H. McKenzie  
 Anna Merritt\*  
 Theresa & Bruce Michelson  
 Gigi & Frank Miles  
 Sallie & Norman Miller  
 Jerald Wray & Dirk Mol\*  
 Martha & Thom Moore\*  
 Nancy Morse\*  
 Armine & Rudolf Mortimer  
 Jane & Walter Myers  
 Janet & Douglas Nelson\*  
 A. Mark Neuman  
 Debra Lee & Ty Newell  
 Richard Noel  
 Jeanette Nugent  
 Claudia Reich & Gary Olsen\*  
 Brenda & Stephen Pacey  
 Jean Paley  
 Donald Perrero  
 Marjorie Perrino  
 Carolyn & Todd Petersen  
 Alice Pfeffer\*  
 Kathleen A. Holden & David  
 Prochaska  
 Jill & James Quisenberry\*  
 Gloria Rainer  
 Susan & Sam Reese  
 Lois & Robert Resek\*  
 Karen & Michael Retzer  
 Helen & Daniel Richards\*  
 Marlyn Rinehart  
 Carole & Jerry Ringer\*  
 Clarette Ritz  
 Linda & Ronald Roaks  
 Phyllis Robeson  
 Lisa & Eric Robeson  
 Anne Robin  
 Julia & Gene Robinson  
 Taya & Mike Ross  
 Christie Roszkowski  
 Deborah & Brian Ruddell  
 Deborah & Stephen Rugg\*  
 Jane & John Santogrossi  
 Shozo Sato  
 Carol & Ed Scharlau\*  
 Jane & Christian Scherer  
 Susan & Richard Schnuer  
 Kim Robeson-Schwenk & Dean  
 Schwenk\*

Kay & John Shaner  
 Anne & David Sharpe  
 Trent Shepard  
 Janice Sherbert  
 Jan & David Sholem  
 Carol Shupp  
 Birute & Vaidotas Simaitis  
 Patricia & Charles Simpson  
 Brenda & Dale Slack  
 E. Jean Smith  
 Mary Schuler & Stephen Sligar  
 Audrey Ishii & Charles Smyth  
 Prudence Spodek  
 Elaine & Case Sprenkle  
 Cecile Steinberg  
 Margaret Stillwell  
 Sheila Sullivan  
 Patricia Plaut & Kenneth Suslick  
 Iris & Burton Swanson\*  
 Cynthia Swanson  
 Jason & Michelle Swearingen  
 Bonnie & Bob Switzer  
 Masako Takayasu\*  
 Nancy & Edward Tepper  
 Ray Timpone  
 Joan & Walter Tousey  
 Shirley & Arthur Traugott\*  
 Carolyn Casady-Trimble & Ralph  
 Trimble  
 Devon Hague & Dallas Trinkle  
 Pat & Allan Tuchman\*  
 Carl L. Vacketta  
 Dena & Jim Vermette  
 Stella B. & C. Max Volk  
 Lynn Weisel Wachtel & Ira Wachtel  
 Chip Walgren  
 Joy Thornton-Walter  
 Paula Watson  
 Barry Weiner  
 Susan & Robert Welke  
 Hana & David Wickersheimer  
 Sarah Wigley  
 Rebecca & Paul Wigley  
 Karen & William Wilkinson  
 Sarah & Charles Wiseman  
 Patricia Cassidy & Andrew Wycislak  
 Elaine & Harold Yoon  
 Joan & Theodore Zernich  
 And gifts from three Anonymous  
 donors

---

### Memorial Gifts to the Marquee Circle

Jane M. Barrett  
 James Barrett  
 Martha & Morris Hecker  
 Barbara & John Hecker  
 Rosann Noel  
 Matthew Noel

---

\*Former member of the Krannert Center Advancement Council



Pat Januszki & Dick Adams  
Karen & Larry Apfelbaum  
Carol & Richard Arnould  
Charlotte Arnstein  
Grace Ashenfelter  
Judith Bach  
Susan & G. Tim Bachman  
Joseph Barnes  
Paula & Clifford Barnes  
Sandra & Ritchie Barnett  
Maeline & Robert Barnstable  
Jane & Peter Barry  
Rita Bartholomew  
Kathleen & S. Eugene Barton  
Ronald & Susan J. Bates  
Norma Bean  
Mary Beastall  
Susan & Wayne Bekiares  
Carol & Carl Belber  
Dorothy & James Bennett  
Kathleen & John Lansingh Bennett\*  
Laura & Kenneth Berk  
Mary & Kenneth Beth  
Carol & Richard Betts  
Debra & Kenneth Bezan  
Sue Biddle  
Bruce Bonds  
Tamara Bouseman  
Kathryn & Van Bowersox  
Hannah & Justin Brauer  
Amy Mueller & James Brennan  
Liora & Yoram Bresler  
Margaret & Donald Briskin  
William Brooks  
Channing Brown  
Donald Buss  
David Campbell  
Louise Walczak & Joseph Carey  
Sandra Carr  
Susan Hinrichs & Alan Carroll  
Donna & Steven Carter  
Sandra Casserly  
Joyce & Salvatore Castronovo  
Yvonne & Robert Cataneo  
Elaine Bearden & Craig Chamberlain  
Alexander Chang  
Chen Chen  
Matthew Chen

Candice Chirgotis  
Eileen & Dennis Coleman  
Deborah Cook  
Janet & William Coombs  
Nancy & Fred Coombs  
Kathleen Vance & Charles Cowger  
Nancy Creason  
Sandra & Luis Cuza  
Elizabeth & Robert Czyn  
Millie Davis  
Patricia & Robert Davis  
Susan Meinkoth & Peter Davis\*  
Lucia & Ron Deering  
Nancy & Harold Diamond  
Deborah & Joseph Dipietro  
Terri Dodson  
Victoria Pifalo & Kieran Donaghy  
Robert Donohue  
Jean Driscoll  
John & Astrid Dussinger  
Ellen & Douglas Elrick  
Rhoda Engel  
E. R. Ensrud  
Breanne Ertmer  
Sharol & Victor Escobar  
Mary Ann & Robert Espeseth  
Eleanor & Walter Feinberg  
Jane Mohraz & A. Belden Fields  
Kim & Allan File  
Sandy & Joe Finnerty  
Rebecca Netti-Fiol & Stephen Fiol  
Sue Anne & Don Fischer  
Judith & Dale Flach  
Catherine Flood  
Kristin & James Flores  
Rose Marie & Brendan Foley  
Barbara Ford  
Tracey Ford  
Priscilla & Andrew Fortier  
Claudia & Eduardo Fradkin  
Karen & Alain Fresco  
Richard Furr  
Pamela & Samuel Furrer  
Janet Kalmar & Benjamin Galewsky  
Evelyn & Joseph Gill  
Derek Girtton  
Vicki & Alan Good  
Nancy Goodall  
Rose & William Goodman  
Strefanie Borntrager & Zachary  
Gordon  
Karen Grano  
Susan & Lewis Greenstein  
Karl Greve  
Phyllis Gron  
Kimiko Gunji  
Lila Sullivan & Don Gunning  
Karen Greenwalt & David Hamilton

K.S. & Torin Hannan  
Karen & David Harris  
Cynthia Capek & Edward Harvey  
Jenny & Dick Harvey  
Susan Bonner & Dena Hasselbring  
Dauna Hayman  
Christine & Bruce Hegemann  
John Heiligenstein  
Jannette & Donald Helfrich  
Marne Helgesen  
Deloris & Grant Henry  
Mary Henson  
Thomas Herbold  
Susan & Edwin Herricks  
Herbert Hiestand  
Caroline Phelps & Patrick Higgins  
Shawna Scherer & Steve Higgins  
Bonnie & Steven Hill  
Lila & Larry Hill  
Paul Hinson  
Jennifer & Paul Hixson  
Zarina & Hans Hock  
JoAnn Hodges  
Laurie & Robert Hodrick  
Kay Hodson  
Judith Hoffman  
Marilee & Robert Hoffswell  
Jean Holley  
Edit & Leland Holloway  
Jessie Houston  
Michael Lambert & Timothy  
Hutchison  
Andrew Ingram  
Margaret Inman  
Dixie & Gary Jackson  
Elizabeth & Henry Jackson  
Meghan & Cyril Jacquot  
Janet Elaine Guthrie & Mark Jaeger  
Helen & Francis Jahn  
Daniel Jensen  
Bruce Johnson  
Elizabeth Johnston  
Patricia & John Jordan  
JoAnn McNaughton Kade &  
Christopher Kade  
Elizabeth Kakoma  
Beverly & George Kieffer  
Janice Kimpel  
Margaret Patten & Todd Kinney  
Jeffrey & Patricia Kirby  
Gerri Kirchner  
Julia Kling  
Patricia & Frank Knowles  
Christa Knust  
Marilyn Kohl  
Jean & Thomas Korder  
Barbara & Gary Koritz  
Shari L. Kouba

Joan & Charles Kozoll  
 Elizabeth & David Krchak  
 Susan & Curtis Krock  
 Marilyn & Don Krummel  
 Jane Block & Paul Kruty  
 Carrie & Richard Kubetz  
 Judith Kutzko  
 James Land  
 Janet Schultz & Russell Lascelles  
 Linda Lebie  
 Carol Leff  
 Jean Halstead & Beth Lehman  
 Joyce Meyer & Faye Lesht  
 Patricia & Vernon Lewis  
 Mary & Louis Liay  
 Cynthia & Michael Loui  
 Brandi & Jason Lowe  
 Ann Lowry  
 Robin Luebs  
 Suzanne & John Magerko  
 Marguerite & Walter Maguire  
 S. Pauline & Mankin Mak  
 Tracey & J. Victor Malkovich\*  
 Jeannine Malmsbury  
 Kate Malmsbury  
 Patricia & Charles Manns  
 Norma & Herbert Marder  
 Susan Gonzo & Numa Markee  
 Dwayne D. McBride  
 Jane & Michael McCulley  
 Alina Reeves & Joseph Meier  
 Carol & David Meitz  
 Christen Mercier  
 Sharon & David Mies  
 James Miller  
 Charlotte Mattax Moersch & William  
 Moersch  
 Monahan Partners  
 Linda & Mark Moore  
 Anna Louise & Terry Moore  
 Liz & Dan Morrow  
 Cara Finnegan & John Murphy  
 Catherine & Robert Murphy  
 Lloyd Murphy  
 Lucy Miller Murray & Martin L. Murray  
 Paul Nash  
 Jane & Alan Nathan  
 Carol Neely  
 Jeffrey Nelson  
 Eve Harwood & Mark Netter  
 Peter Newman & Jermon Ng  
 Jack Nibling  
 Lynda Dautenhahn & Lee Nickelson  
 Roxanna Nixon  
 Holly Nordheden  
 Jenene & Richard Norton

Valerie & Thomas Oakley  
 Charles Oellermann  
 Donna & Paul Offenbecher  
 Julia O'Neill  
 Janice Olson  
 David Ostrodka  
 Terry Conour & Georgia Oswald  
 Martha Palit  
 Carolyn & Larry Pater  
 Esther Patt  
 Donna Cox & Robert Patterson  
 Vicki & Robert Patton  
 Lois Pausch  
 Jean & G. David Peters  
 Mary Phillips  
 Ann & Keith Pollok  
 Angela & David Purkiss  
 Karen Rao  
 Lori Rath  
 Judith Rathgeber  
 Deborah & Michael Reagan  
 Margaret A. Reagan  
 Julie & William Rettberg  
 Carole & Adam Richardson  
 Connie Rieken  
 Charles Rohrbach  
 Thomas Rozanski  
 The Walter E. Rucker Family  
 Beverly Sanford  
 Deborah Allen & Howard Schein  
 Mary Jane and Todd Schermer  
 Peggy Schickedanz  
 Susan K. & Paul K. Schlesinger  
 Grace & William Schoedel  
 Kathleen & Mark Schoeffmann  
 Karl Heinz Schoeps  
 Dawn Schultz  
 Patricia Fowler & Jose Schutt-Aine  
 Judy & John Sehy  
 Philip J. Seldis  
 Rochelle Sennet  
 Alys & Daniel Shin  
 Lily Siu  
 Elzbieta & Piotr Skorupa  
 Deborah & James Smith  
 Elyse Rosenbaum & Robert Smith  
 Marianne Abbey-Smith & Campbell  
 Smith  
 Avigail & Marc Snir  
 Melissa Breen & Cheryl Snyder  
 Leellen & Philip Solter  
 Penelope & Anthony Soskin  
 Nancy Sottos  
 Peter Cohen & Jeffrey Sposato  
 Beth Stafford  
 Deborah Stewart

Jane Teresi & James Stewart  
 Gary Stitt  
 Andrea Beller & Kenneth Stolarsky  
 Tara & Jeff Swearingen  
 Catherine Thurston  
 Debra & Edward Tiedemann  
 Diane Durbin & David Tjaden  
 Jonathan Trupin  
 Joan & Stanley Tunnell  
 Julia & Thomas Ulen  
 Grant Ullrich  
 Candice & Frederick Underhill  
 Anne Silvis & Albert Valocchi  
 Cynthia Vandeventer  
 Bette & Johannes Van Es  
 Helen Vedder  
 Carol Veit  
 Linda & R. E. Veltman  
 Julie Mason-Vermeulen & Paul Henri  
 Vermeulen  
 Shirley Walker  
 June & Ashton Waller  
 Diane & James Wardrop  
 Mari McKeeth & Heidi Weatherford  
 Ann & Ronald Webbink  
 Cheryl & Russ Weber  
 Kathy & Al Wehrmann  
 Carl Pius Weibel  
 Elizabeth Weiss  
 Michelle & Michael Wellens  
 Deborah & Michael Westjohn  
 Paul E. Weston  
 Karen & John Whisler  
 Stephanie Daniels & Steven White  
 Donna & Thomas Williams  
 Karen Taylor Willis & Tymothé Willis  
 Susan & Mark Wisthuff  
 Ava & Richard Wolf  
 Timothy Wong  
 Janie & Ehud Yairi  
 Wendy & Glen Yang  
 Rittchell & Peter Yau  
 Michael Yonan  
 Ruth Yontz  
 Sally & Stephen Zahos  
 Zhongmin Zhu  
 Yvonne & Gerard Ziegler  
 Maureen Reagan & Bruce Zimmerman  
 Sharon Shavitt & Steven Zimmerman  
 Jillian & Christopher Zwilling

And gifts from five Anonymous donors

## Student Loop

Ziyi Cao  
Yu Ju Chang  
Pyunghwa Choi  
Min-Hsueh Chiang  
Zhijie Dong  
Xinyi He  
Alexander Ho  
Ethan Huang  
Abhishek Joshi  
Hannah Leung  
Andre Li  
Samuel Li  
Zeyu Li  
Tongyu Liu  
Siang Liu  
Sinyee Lu  
Xuhao Luo  
Haozhe Si  
Angela Sun  
Jinghan Sun  
Zhuoqi Tao  
Minyang Tian  
Yannan Tian  
Michelle Wang  
Runxuan Wang  
Zikui Wang  
Minshan Wei  
Tatum Wilson  
Junzhe Wu  
Xinhe Xu  
Xinyang Xu  
Zhi Yan  
Junhong Ye  
Zhiheng Ye  
Mingyue Yu  
Shuning Zhang  
Taige Zhang  
Xingjian Zhang  
Yifan Zhang  
Zhengyu Zheng  
Huilin Zhu

---

## Memorial Gifts to the Loop

Robert L. Bender  
Amy Chrise  
Margaret & Scott Cline  
Susan & Michael Haney  
Betsy Hendrick  
Cherie & William Hodrick  
Laurie & Robert Hodrick  
Ingrid & Bruce Hutchings  
Judith & J.T. Iversen

Elizabeth Johnston  
Mary & L.R. Jones  
Kimberly & Donald Knoche  
Barbara & Gary Koritz  
Linda & J.B. Luedeke  
Suzanne & John Magerko  
Sarah & Robert Nemeth  
Charles Oellermann  
Lois & Robert Resek\*  
The Walter E. Rucker Family  
Sheleen Sandberg  
Julia & Thomas Ulen  
MaryBeth Walker  
Alex P. Bhanos  
Susanne Bhanos  
George R. Carlisle  
Debra & Kenneth Bezan  
Donald W. Clegg  
Ingrid & Bruce Hutchings  
Doris H. Harvey  
Vicki & Alan Good  
Jenny & Dick Harvey  
Harry Haile  
Mary & William Bahnfleth  
Mary & Kevin Barry  
Marcia Billhartz  
Cindy & Brette Dorris  
Karen & Robert Sibert  
Louise & Douglas Wadas  
James B. Kaler  
Kristen Fischer  
Elizabeth Rockman & Gregg  
Homerding  
Jennace & David Linton  
Alice Pfeffer  
Joan Farwell-Sargent & Michael  
Sargent  
University of Illinois Department of  
Astronomy  
Paula Watson  
Ann & Ronald Webbink  
Deborah A. Klippel  
Kathryn Kelly  
Gary E. Mason  
Vicki & Donald Burke  
Ann Einhorn  
Sue & Tom Falender  
Eileen & William Kohen  
Paula Kaufman  
Marsha & Robert Klein  
Jan Erkert & Bernt Lewy  
Susan Cohen & George Monahan  
Michelle Suhrbur-Morrell & Richard  
Morrell  
Janet & Douglas Nelson

Diane & Fred Ore  
Brenda & Stephen Pacey  
Mary Perlstein  
Marie & Tom Slattery  
Phyllis & Rand Spiro  
Diane Durbin & David Tjaden  
Bette & Johannes Van Es  
Lynn Weisel Wachtel & Ira Wachtel  
Ann & Ronald Webbink  
Hana & David Wickersheimer  
Susan S. McDonald  
Anonymous  
Charles J. & Joanne J. McIntyre  
The McIntyre Family  
Diane K. Miller  
Ann Einhorn  
Marilyn J. Nichols  
K.S. & Torin Hannan  
Campo E. Palencia  
Elaine Fowler Palencia & Michael  
Palencia-Roth  
Melvin Rubin  
Lesley Rubin  
Annette H. Schoenberg  
Jannette & Donald Helfrich  
Myron J. Sholem  
Frances & Marc Ansel  
Edith A. Stotler  
Richard Noel  
Julia O'Neill  
Kathy & Al Wehrmann  
Scott White  
Nancy Sottos  
Robert Malik Winter  
Sarah Hasib  
Pete & Molly Yunyongying

---

# KRANNERT CENTER VOLUNTEERS

## COMMUNITY VOLUNTEERS

Nousa Abdullah  
Nisha Aggarwal  
Elizabeth Allison  
Harold Allston  
Brant Asplund  
Tammy Asplund  
Mike Atkinson  
Debora Avelino  
Ron Baker  
Jane Barry  
Heather Baseler  
Pam Bedford  
Paul Beinhoff  
Janice Bellington  
Ann Bergeron  
Kathy Bergeron  
Priya Bhatt  
Shohan Bhattacharya  
Karen Bojda  
Brunna Bozzi  
George Brock  
Jonne Brown  
Krishni Burns  
Mark Casco  
Felix Chan  
Yoline Chandler  
Coco Chen  
Wen-Chi Chen  
Kathleen Corley  
Kathleen Correa  
Jessica Crane  
Jessica Dager  
Millie Davis  
Cara Day  
Kasandra Delafuente  
Lori Deyoung  
William Dick  
David Dorman  
Astrid Dussinger  
Kathy Dwyer  
Sheryl Dyck  
Peter Dyck  
Debra Eichelberger  
Stacey Elliott  
Beth Engelbrecht-Wiggans  
Richard Engelbrecht  
-Wiggans  
Roger Epperson  
Vennie Ewing  
Elizabeth Faulkinberry  
Judy Federmeier  
Cliff Federmeier  
Dee Feickert  
Andrea Fierro

Peter Floess  
Patricia Floess  
B. Jean Flood  
Richard Flood  
Elizabeth Frankie  
Roger Fredenhagen  
Bianca Galvez  
Zeidy Garcia  
Inga Giles  
Emma Glezer  
Robin Goettel  
Michelle Gonzales  
Gene Grass  
Sandy Haas  
Catherine Haney  
Katherine Hansen  
Susan Hansen  
Tonya Hartman  
Mike Havey  
Kathy Havey  
Judith Haydel  
James Hayes Jr.  
Kate Heiberger  
Cynthia Helms  
Kathy Henry  
Abby Heras  
Joan Hood  
Peter Hood  
Mary Hosier  
Betsy Hunter  
Ingrid Hutchings  
Elizanena Ibarra  
Janice Impey  
Laurie Jacob  
Roland Jean  
Cynthia Jean  
Sten Johansen  
Diana Johns  
Marcy Joncich  
Carlton Kagawa  
Debra Karplus  
Karan Keith  
Janeane Keller  
Patti Ketchmark  
Ashley Kirby  
Daniel Krehbiel  
Spencer Landsman  
Linda Larson  
Diane Lassila  
Warren Lavey  
Josephine Lee  
Hannah Lee  
Eunsun Lee  
Vincent Leonard  
Jennifer Lin  
Fei Lin

Feikai Lin  
Xiao Lin  
Sheila Loosevelt  
Penny Lopez  
Lynda Lopez  
Robert Lou  
Ginger Lozar  
Michelle Lynn Gill  
Janice Maddox  
Marguerite Maguire  
Mary Manley  
Marina Marjanovic  
Nenad Marjanovic  
Nicole Martinez  
Bobbi McCall  
Teri McCarthy  
Sarah McDougal  
Jim McEnerney  
Linda McEnerney  
Liz McMillen  
Susan Meinkoth  
Kathy Metcalf  
Sharron Mies  
David Mies  
Martha Milas  
Carol Miles  
Carol Miller  
Michael Miller  
Julie Mills  
Patrick Mills  
Jihyeon Min  
Margrith Mistry  
Frank Modica  
Martha Moore  
Thom Moore  
Pnina Motzafi-Haller  
Christina Myers  
Jane Myers  
Manisha Naganatanahalli  
Linda Neider  
Michael Nelson  
Peter Newman  
Jerome Ng  
Johnson Nguyen  
Dick Norton  
Saray Ocampo  
Alejandra Ochoa  
Marjorie Olson  
Carol Osgood  
Brenda Pacey  
Cynthia Perez  
Pezz Pezz  
Joel Plutchak  
Renee Potter  
Carolyn Presley  
Robbie Pulliam

James Quisenberry  
Jill Quisenberry  
Anne Raczak  
Beverly Rauffuss  
Sam Reese  
Victoria Rice  
Monique Rivera  
Marcelo Rosa Mazzocato  
Laurel Rosch  
Joyce Ruder Jackson  
Tanya S  
Faaiza Saif  
Corinne Saldeen  
Uriel Sanchez  
Jean Sandall  
Christian Sarol  
Barbara Schleicher  
Dawn Schultz  
Izzy Scott  
Christel Seyfert  
Lei Shanbhag  
Edward Snyder  
Isaac Soloveychik  
Jennifer Steele  
Carolyn Stewart  
Margaret Stillwell  
Carrie Storrs  
Judy Swiger  
Weifeng Sun  
Casey Tan  
John Taylor  
Alice Taylor  
Adrian Testo  
Jamie Thomas-Ward  
Lee Trail  
Pat Tuchman  
Allan Tuchman  
Barbara Turner  
Julia Ulen  
Lynda Umbarger  
Valeria Vargas  
Dianna Visek  
Frank Vivirito  
Kathy Vivirito  
Louise Walczak  
Spencer Walden  
Anna Maria Watkin  
Jean Weigel  
Whitney Welsh  
Linda Wessels  
Jasmine White  
Kathy Wicks  
Liesel Wildhagen  
Diane Wilhite  
Ed Wilhite  
Douglas Williams

Susie Wright  
Lei Xia  
Yu Xia  
Nancy Yeagle  
Sally Zahos  
Jennie Zermeno  
Nicole Zhang  
Rui Zhao  
Wenbin Zhou  
Bruce Zimmerman  
**KRANNERT CENTER  
STUDENT ASSOC.  
Administrative Board**  
Diana Pham, President  
Alexa Bucio, Vice President  
Rochelle Tham, Secretary  
Trevor Santiago, RSO  
Liaison Officer  
Judy Chiang, Event  
Coordinator  
Emily Yan, Website Chair  
Cedric Mathew, Treasurer

## Members

Aki Akhauri  
Michelle Burns  
Jingwen Dai  
Rowan Frantz  
Elena Gonzalez  
Jessica Gossen  
Stanley Gu  
Ally Guo  
Hayley Kelleck  
Haley Kennedy  
Ryan Lin  
Xiao Lin  
Jenny Liu  
Seren Liu  
Sian Liu  
Yuanze Luo  
Christine Millins  
Samantha Moran  
Jess Nathan  
Daniel Oster  
Yueting Su  
Fu Sun  
Haley Van Patten  
Claire Wu  
Xuan Yi  
Andy Yoon  
Menghao Yu  
Yangxue Yu  
Lucia Zhang  
Valerie Zhao

---

# KRANNERT CENTER STAFF

---

Mike Ross, Director  
Terri Anne Ciofalo, Associate Director  
for Production  
Maureen V. Reagan, Associate Director  
for Marketing

---

## EVENTS

Andrew Giza, Events Director  
Andrew Almeter, Senior Production  
Coordinator for Events  
Bree Brock, Production Coordinator  
for Events  
Seth Wheeler, Technical Coordinator  
for Events

---

## PROGRAMMING AND ENGAGEMENT

Jason Finkelman, Artistic Director of  
Global Arts Performance Initiatives  
Emily Laugesen, Co-Director of  
Engagement  
Sam Smith, Director of Civic Engagement  
and Social Practice

---

## ADVANCEMENT

Cheryl Snyder, Director of Advancement  
Bethany Whoric, Associate Director  
of Advancement

---

## FINANCE AND OPERATIONS

### Business Office

Katie Brucker, Debbie Delaney, Stacey  
Elliott, Shelly Thomas-Eichorn,  
Accounting Staff  
Tara Heiser, Human Resources Support

## Building Operations

John O. Williams, Facility Manager  
Tony Mapson, Assistant Facility Manager  
Joe Butsch, Building Electrician  
Jared Painter, Assistant Chief Building  
Operations Engineer  
Scott Butler, Eric Carr, Emmett Catlin,  
Austin Dearth, John Ekstrom, Bryan  
Franzen, Mark Lashbrook, Jacob  
Lerch, Kevin Logue, Jessica Fancher,  
Attendants  
Glenda Dalton, Office Support Associate

---

## MARKETING

Maureen V. Reagan, Associate Director  
for Marketing

## Communications

Sean Kutzko, Assistant Communications  
Director  
Nicholas Mulvaney, Senior Designer  
Jodee Stanley, Program and Web Editor

## Public Services

Lisa Lillig, Client & Food Services Director  
Elizabeth Henke, Stage 5 Bar Manager  
Michael Bunting, Intermezzo Supervisor  
Amy Thomas, Director of Food Production  
Abraham Castro, Assistant Director of  
Food Preparation  
Zia Moon, Krannert Center Showcase  
Director, Office and Communications  
Support Specialist  
Whitney Havice, Interim Ticketing and  
Patron Services Director  
Ty Mingo, Assistant Ticket Services  
Director  
Jon Proctor, Nick Wurl, Ticket Sales  
Supervisors  
Ann-Marie Dittmann, Patron Services  
Assistant Director  
Adrian Rochelle, Front of House  
Performance Supervisor

## PRODUCTION

Terri Anne Ciofalo, Director  
of Production  
Maria Miguens, Interim Production  
Manager

## Audio Department

Rick Scholwin, Audio Director  
Alec LaBau, Associate Audio Director/  
Video Director

## Costume Shop

Andrea Bouck, Costume Director  
Richard Gregg, Costume Rentals Director/  
Wardrobe Adviser/Associate Costume  
Director  
April McKinnis, EB McTigue,  
Cutters/Drapers  
Julianna Steitz, Kari Little-McKinney,  
Theatrical Stitchers

## Lighting Department

Lisa Kidd, Lighting Director  
David Krupla, Associate Lighting Director  
Nick Jukes, Lighting and Media  
Technician

## Properties Department

Adriane Binky Donley, Properties Director  
Kira Lyon, Assistant Properties Director

## Scene Shop

Ryan Schultz, Technical Director  
Tatsuya Ito, Associate Technical Director  
Bill Kephart, Scene Shop Chief Clerk  
Bobby Reynolds, Theatrical Scene Shop  
Coordinator  
Liam Romano, Theatrical Scene Shop  
Assistant



---

# WE'RE SO GLAD YOU'RE AT THE CENTER

We work to create the best possible setting for the experiences you seek and find here.

## NECESSARIES

Restrooms are located in the foyers of Foellinger Great Hall, Tryon Festival Theatre, and Colwell Playhouse; the east entrances on the Lobby level; and in each elevator lobby on Level 1 and Level 3. Lobby restrooms and one restroom in each elevator lobby are fully accessible and contain baby-changing stations.

Ushers will be happy to provide you cough drops courtesy of St. Joseph Apothecary, or disposable foam earplugs if the place starts rockin'.

If you or a companion needs medical assistance, contact an usher or other staff member.

Please take a moment before the performance to note the theatre exits nearest to you. If it becomes necessary to evacuate the theatre, please remain calm, follow the instructions of the house staff, and exit in an orderly fashion to the appropriate safe meeting location, which will be announced to you.

## SIGHTS AND SOUNDS

The use of cell phones, cameras, and recording devices during performances is prohibited unless otherwise announced from the stage.

## LATE ARRIVALS

As a courtesy to performers and audience members, latecomers will be seated only at times selected in advance by the artist. Should you find that you've arrived late to a performance, our Patron Services staff will keep you informed about the earliest seating opportunity.

## LOST ITEMS

If you are in need of Lost and Found, please visit the Patron Services counter. We will do our best to reunite object and owner!

## TICKET RETURNS

If you find you can't attend a performance, please contact the Ticket Office in advance, preferably by 6pm the day before the performance (kran-tix@illinois.edu or 217.333.6280). We never charge a handling fee on ticket transactions.

## SERVICES

Krannert Center for the Performing Arts is committed to making experiences accessible for all patrons, and we are delighted to provide a number of services to assist you. Krannert Center is equipped with an assisted listening system, wheelchair-accessible and no-step/few-step seating, and large-print programs, Braille programs, and American Sign Language interpreters are available with three weeks' advance notice.

For assistance regarding your visit, please email: Para ayuda en relación con su visita, favor de enviar un email a: Pour vous aider dans votre visite, prière de nous envoyer un courriel à:

欢迎! 如若您对您的造访需要帮助, 请发送电子邮件至:

स्वागत है! अगर आपको अपने रहने के लिए मदद चाहिए, ईमेल कीजिए:

환영합니다! 방문에 관해 도움이 필요하실 때에는...

에게 이메일로 문의하시기 바랍니다:


**PATRONSERVICES@KRANNERTCENTER.ILLINOIS.EDU**  
**217.333.9716**



TH APR 13 - SA APR 15 AT 7:30PM

KRANNERT CENTER  
AT THE VIRGINIA: LYRIC THEATRE  
@ ILLINOIS PRESENTS

# CITY OF ANGELS

 krannert center

FR-SA APR 14-15 AT 7:30PM

# MARK MORRIS DANCE GROUP: THE LOOK OF LOVE



 krannert center





EST.  
19  
69

