

PHOTO BY PEDRO GREIG



**CIRCA: SACRE**

Friday, October 21, 2022, at 7:30pm  
Foellinger Great Hall

---

# PROGRAM

## **CIRCA: SACRE**

Created by Yaron Lifschitz and the Circa Ensemble

Commissioned by Merrigong Theatre Company

Co-produced by La Comete

Ten acrobats from the Circa ensemble bring Stravinsky's seminal *The Rite of Spring* to the circus stage. Pulsating with tension and infused with dark humour, this distinctive production from Artistic Director Yaron Lifschitz confronts humanity's interconnectivity, our inherent sexual desire, and relationship with divinity.

*This performance will be presented with a 20-minute intermission.*

## **THE CAST**

Fran Alvarez  
Jon Bonaventura  
Marty Evans  
Sam Letch

Nancy Gutierrez Luna  
Hamish McCorty  
Lachlan Sukroo  
Luke Thomas

Violetta Van Geyzel  
Georgia Webb  
Billie Wilson-Coffey

### **Director**

Yaron Lifschitz

### **Lighting Designer**

Veronique Bennett

### **Technical Director**

Jason Organ

### **Music**

Philippe Bachman and  
Igor Stravinsky

### **Costume Designer**

Libby McDonnell

### **Producer**

Danielle Kellie

# CIRCA



---

*Circa acknowledges the assistance of the Australian Government through the Australia Council, its arts funding and advisory body and the Queensland Government through Arts Queensland.*

*Circa is based in Meanjin (Brisbane) on the lands of the Jagera and Turrbal people. We respectfully acknowledge the Traditional Custodians of the many lands on which we create and perform. We pay our respects to Elders past, present and emerging. Always was. Always will be.*

## THANK YOU FOR SPONSORING THIS PERFORMANCE

With deep gratitude, Krannert Center thanks all 2022–23 Patron Sponsors and Corporate and Community Sponsors, and all those who have invested in Krannert Center. Please view their names later in this program and join us in thanking them for their support.

This event is supported by:



**LENA & BOB GIESELMAN  
ENDOWMENT FUND**



**DR. JAN MARIE ARAMINI &  
MICHAEL PETTERSEN**  
Four Current Sponsorships

---

# DIRECTOR'S NOTE

## SACRE

It begins in darkness  
You can just make out bodies, moving in the  
black.  
Individuals emerge, flickers of light, moments  
caught and held.  
Then small encounters, the light grows.  
Explosions, connections, departures.  
The first half of *Sacre* takes us through the stew of  
human DNA  
chains of possibility combine and split as if a new  
species is emerging.

Savage, tender, raw.

But also lyrical  
like an entire universe reduced  
to a stark choreography  
10 acrobats  
one light  
no colour  
just absence and presence,  
together or apart

Philippe Bachman's music is a series of sketches  
towards *Rite of Spring*. As if we are hurtling  
towards an inevitability.

And then the famous C on the bassoon  
Stravinsky's *Rite of Spring*.  
The possibility wave collapses to the fate of a  
single group, this one, here.  
The skills grow, the physical intensity rises  
A dangerous collective will drives us forward  
in search of sacrifice  
in search of blood.

My work doesn't tell stories  
I'm not interested in themes or ideas  
I work in circus because it is actual  
Intense, real,  
It isn't about,  
it is.

And *Rite of Spring* went from causing a riot in  
1913 to being a children's cartoon in 1940.  
I love the music  
but my problem was I never felt anyone was  
actually going to die

Circus can change that. It can take us to the edge.

Welcome to *Sacre*, Circa style.

*Yaron Lifschitz, artistic director*

## PROFILES



**YARON LIFSCHITZ** is a graduate of the University of New South Wales, University of Queensland, and National Institute of Dramatic Arts (NIDA), where he was the youngest director ever accepted into its prestigious graduate director's course.

Since graduating, Yaron has directed over 60 productions including large-scale events, opera, theatre, physical theatre, and circus.

His work has been seen in 40+ countries and across six continents by over 1.5 million people and has won numerous awards including six Helpmann awards and the Australia Council Theatre Award. His productions have been presented at major festivals and venues around the world, including Brooklyn Academy of Music, the Barbican, Les Nuits de Fourvière, Chameleon, and all the major Australian festivals. His film work was selected for the Berlin and Melbourne Film Festivals. He was founding artistic director of the Australian Museum's Theatre Unit, head tutor in directing at Australian Theatre for Young People and has been a regular guest tutor in directing at NIDA.

He is currently artistic director and CEO of Circa, and was creative director of Festival 2018: the arts and cultural program of the 21st Commonwealth Games.

**PHILIPPE BACHMAN** is a musician, artistic director and producer based in Paris. After his studies at Paris Conservatoire (CNSMDP) and at SciencesPo Paris, he has been awarded Villa Medicis Hors-les-



Murs (France) and Fulbright Scholar (USA), and lived in New York City. He has toured as a trio in a dozen countries and he composes for international stage productions, including for Canadian director Robert Lepage.

In 2015, he was chair of the National Committee for New Music Commissions (Ministry of Culture) and has worked for UNESCO, Paris "Cité de la Musique," Ircam. He has been CEO of the Mediterranean Youth Orchestra (1997–2001) and the Chamber Choir Accentus (2002–2003).

Since January 2019, he has been teaching a seminar on "Being an Artist in Today's World: Facts and Fantasies" at SciencesPo Paris (Europe–America and Europe–Africa programs).

Since 2004, he has been CEO and artistic director of La Comète–Scène nationale de Châlons-en-Champagne, a national performing arts venue (three halls, 120 performances, including an international dance season), awarded one of the eight European Artistic Hubs by French Ministry of Culture since 2018. He is founding member of Tour de Dance, an informal network bringing together dance venues and programmers from France, Belgium, Luxemburg, and Germany, sharing international dance projects and tours. In 2008, he created the 360° Network, bringing together 18 circular performing arts venues from 11 countries. Since 2013, he has been the CEO and artistic director of the War on Screen International Film Festival.



**VERONIQUE BENETT** is a lighting, set, and costume designer. As a lighting designer, Veronique's credits include: *Banging Denmark* (Sydney Theatre Company); *Wolves* (Belvoir); *The Smallest Hour* (Griffin Theatre); *John* (Outhouse Theatre Co.), for

which she was nominated for a Sydney Theatre Award; *The Life of Us* (Hayes Theatre); *Nosferatu* (Old 505); *Stupid Fucking Bird* (New Theatre); *Chorus*, *Anatomy of a Suicide*, *Permission to Spin*, *Howie the Rookie* (Old Fitz); *A Girl Is a Half-Formed Thing* (KXT). Veronique's associate lighting designer credits include: *Cursed!* designed by Chloe Oglvie (Belvoir); *No Pay? No Way!* designed by Paul Jackson (Sydney Theatre Company); *Prima Facie*, designed by Trent Suidgeest (Griffin Theatre); *Cry-Baby*, directed and designed by Alexander Berlage (Hayes Theatre Co); and *Macbeth*, *The Tempest*, and *A Midsummer's Night Dream* for Sport for Jove.



**LIBBY MCDONNELL** is a designer and choreographer and she is currently head of design at Circa. Libby works in diverse genres and forms. At the heart of her work is people and movement.

Libby has a bachelor of fine arts (honours) in visual art from Queensland College of Art–Griffith University and an associate degree in dance from Queensland University of Technology. Her professional career has included performing and making independent dance work, as an artistic director of Ballet Theatre of Queensland and choreographer for Blue Roo Theatre Company. For 11 years, Libby has worked with the team at Circa to

imagine, develop, and deliver their productions locally, nationally, and internationally. During her time at Circa, she has designed costumes for over 30 productions, co-directed three main stage productions, and led many of the company's engagement projects including the pilot of the Circability program. Libby is based in Brisbane with her family.



**JASON ORGAN** graduated from Queensland University of Technology in 1988 and has had an extensive career as a lighting designer, production manager, technician and rigger.

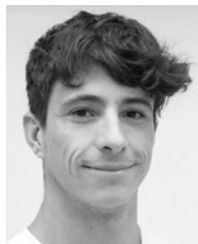
He has worked with companies such as Queensland Ballet, Queensland Theatre, La Boite Theatre Company, and Kooemba Jdarra, and festivals such as Out of the Box, Queensland Music Festival, and Brisbane Festival. Jason was the co-founder of JLX productions, a lighting design and technical consultancy, based in Brisbane. Since 2010, Jason has been working exclusively with Circa as technical director. In this time, he has helped deliver more than 20 new productions.



**DANIELLE KELLIE** began her career as a stage manager and production manager touring Australia and internationally for festivals and companies such as Queensland Theatre; Melbourne Theatre Company; Brisbane Powerhouse, La Boite; Brisbane Festival;

QPAT; Queensland Music Festival, Sydney Fringe Festival and Kooemba Jdarra. She was the resident stage manager of Queensland Ballet 1998–1999 and Opera Queensland 2003–2007.

In 2010, Danielle commenced working at Circa moving into the senior producer role in 2011 and executive producer in 2021. Danielle has a broad role at Circa—she is responsible for Australian and New Zealand sales; delivering Circa’s national and international touring program which averages 400 shows in 15 countries per year; and producing Circa’s new creations with a current total of 32 during her time at Circa.



**FRAN ALVAREZ** was introduced to circus at the age of 16, after a restless adolescence looking for an activity to focus his abundant energy on. He went on to start his circus career at 18 at the preparatory school of Madrid, Carampa, and later at

the Ecole Supérieure des Arts du Cirque de Bruxelles, specialising in hand to hand and group acrobatics.

With a focus on improving his core technique—and becoming a human trampoline—Fran continued his training in France and was involved in the creative development of several shows with high-level acrobatic collectives across Europe.

In his free time, Fran enjoys Olympic-style weightlifting and reading epic fantasy books.



**JON BONAVENTURA**, discovered on a friend’s trampoline in Melbourne, caught his big break at the age of 12, working as a stunt double for Warner Brothers *Where The Wild Things Are*. After over a decade in gymnastics, Jon went on to

study at the National Institute of Circus Arts, specialising in rope. Jon graduated in 2014 and

began touring independent projects around Australia before performing internationally with some of the country’s best circus companies—Circa, Casus, and Circus Oz. Jon can be found hiding in a cafe, hanging from his rope, or standing on people all around the world.

Marty joined the Circa Ensemble full time in 2015, and has been involved in the creation of numerous Circa productions including *When One Door Closes* and *Humans*.



**MARTY EVANS** came to circus by a more roundabout route than most. After watching nothing but circus videos during his lunchbreaks at Australia’s only nuclear reactor, Marty left behind his published scientific career, embracing his physical sports

background to pursue a career in circus.

His first taste of circus came at the University of Sydney in 2010 as he tried to entertain himself during free periods by learning to throw people into the air and trying to catch them again. Marty trained at the National Institute of Circus Arts in Melbourne. He is a fiercely determined and hardworking hand-to-hand base that enjoys exploring new challenges and techniques.

Marty joined the Circa Ensemble full time in 2015, and has been involved in the creation of numerous Circa productions including *When One Door Closes* and *Humans*.

**SAM LETCH** focused all of his energy on throwing himself around in the cold and rainy north west of England, where he grew up, instead of paying attention at school. At the ripe old age of 15, Sam decided that doing back tucks off sand dunes wasn’t enough. The answer to his problem:





Parkour. He trained for three years until his acrobatics took him to the National Centre for Circus Arts (London) where he picked up such skills as teeterboard, hand-to-hand, banquine, and floor and group acrobatics. After graduating, Sam's first job performing at

the Edinburgh Fringe Festival lead him on to work with such companies as Cirque Eloize.

Sam's primary love is performing, shortly after that is his moustache, followed by singing musicals at the top of his lungs for anyone who will listen.



**NANCY LUNA**, an artist born in the city of Guadalajara, Jalisco Mexico on January 10, 1997, began her training in circus at 15 years of age through aerial techniques. Her development and learning were shaped thanks to her previous acrobatics training at

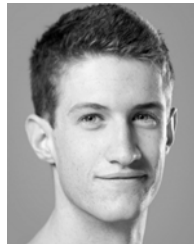
Fly Academy Gymnastics. At the age of 16 years, she began her professional career, joining the main cast of the Mexican production company Circo Dragón as an artist. With Circo Dragón, Nancy participated in many national and international festivals, while also continuing her training in circus, specialising in hand-to-hand and aerial hoop. Nancy participated as a guest artist in the gala presentations of three consecutive editions of the Periplo International Circus Festival, and won the third place as an aerialist (aerial hoop) in the National Circus Competition of Ficho International Festival of Circus and Show of Mexico in 2015.



**HAMISH MCCOURTY** is an acrobat and musician. He began his circus journey at Cirkidz in Adelaide when he was eight years old and, after graduating from the performance program, he's been creating his own work touring nationally and

internationally.

Hamish is currently working on fusing together his passion for music and circus on stage. His main specialties are tumbling and basing pair and group acrobatics and he prides himself on making people laugh and being a loon onstage. Hamish is a keen performer and multi-talented acrobat with his sights set on leaving his mark in the world of circus.



**LACHLAN SUKROO**, in an effort to curb some of his seemingly boundless energy, was enrolled by his mother in Canberra's Warehouse Circus at the age of eight. After graduating from Warehouse's Emerging Artist Program, Lachlan cofounded an

independent circus troupe named Poncho Circus. Lachlan performed with Poncho for a year before deciding that a career in circus was definitely more appealing than sitting behind a desk.

He attended the National Institute of Circus Arts (NICA) studying Chinese pole, teeterboard and group acrobatics. After graduating, he performed with Circus Oz for two years performing internationally and around Australia before joining the Circa Ensemble in January 2019.





**LUKE THOMAS**, as a child, was always driven to pursue an acrobatic career, constantly found swinging upside down on the hills hoist in his backyard. At age 11, he joined Circus 35° South, and trained aerials, tumbling and manipulation for seven years before studying at the National Institute of Circus Arts, graduating in 2017.

During his study, Luke specialised in tissue, foot juggling and group acrobatics. Luke co-created and performed *Out of This World Children's Show*, with seasons at Woodford Folk Festival and Melbourne Fringe Festival. Luke also performed in One Fell Swoop's *By a Thread* at Mullumbimby Circus Festival, Perth Fringe Festival, Adelaide Fringe Festival, and the Circa Festival at Auch, France.

Luke joined the Circa Ensemble in 2018, performing in the world premiere of Circa's Peepshow.



**VIOLETTA VAN GEYZEL** is a playful, adventure-loving circus artist drawn to quirky, inquisitive work. Vi grew up in Queensland, Australia competing in artist gymnastics and, as her love for competing faded, she moved to Melbourne to pursue performing arts. She

graduated NICA in 2020 having specialised in partner acrobatics and aerial rope.

**GEORGIA WEBB**, born and raised in outback Western Australia, was a competitive gymnast and dancer for 13 years. This background gave her the discipline and work ethic which now informs her circus practice. After both parents insisted that their only child join the military, Georgia decided to forgo



those plans to follow her own dream of running away with the circus. Graduating from the National Institute of Circus Arts in 2019, Georgia joined Circa as a full-time ensemble member in January 2020.

In her spare time Georgia enjoys motorbike riding, surfing and free diving. She also hopes to travel the world skydiving someday.



**BILLIE WILSON-COFFEY** discovered Spaghetti Circus at the age of 11 before moving to Melbourne to study at the National Institute of Circus Arts (NICA) in 2007. In her graduating year, Billie made her international debut at the 4th World Circus Festival in

Moscow. Billie joined Circa as a guest artist in 2011 for the world premiere of *Nocturne* in South Korea, whilst continuing her solo work performing in cabarets and festivals nationwide.

Becoming a Circa ensemble member at Circa in 2014, Billie toured *How Like an Angel* before an eight-month residency at the Chameleon Theatre in Berlin performing *Beyond*.

---

# CIRCA

## **"The mighty Circa"**

—Lyn Gardner, *The Guardian*

Circa Contemporary Circus is one of the world's leading performance companies. Since 2004, from its base in Brisbane, Australia, Circa has toured the world—performing in 40+ countries to over 1.5 million people. Circa's works have been greeted with standing ovations, rave reviews and sold-out houses across six continents.

Circa is at the forefront of the new wave of contemporary Australian circus—pioneering how extreme physicality can create powerful and moving performances. It continues to push the boundaries of the art form, blurring the lines between movement, dance, theatre and circus. Compelled by the question "what is possible in circus?" Circa is leading the way with a diverse range of thrilling creations that "redraw the limits to which circus can aspire." (The Age).

Under the direction of circus visionary Yaron Lifschitz, Circa features an ensemble of exceptional, multi-skilled circus artists who have been a regular fixture at leading festivals and

venues in New York, London, Berlin, and Montreal with seasons at Brooklyn Academy of Music, The Barbican Centre, Les Nuits de Fourvière, Chamäleon Theatre as well as major Australian Festivals.

Visit [circa.org.au](http://circa.org.au) to find a Circa performance near you and discover why Circa has been hailed as nothing short of "... a revolution in the spectacle of circus." —*Les Echos*

Circa is committed to fostering the next generation of circus artists and runs public circus classes from its studio in Brisbane. Circa also runs regular circus programs with communities throughout Queensland and around Australia.

As a champion of live performance, Circa was the creative lead for the Gold Coast 2018 Commonwealth Games arts and cultural program.

Discover more about Circa by subscribing to enews at [circa.org.au](http://circa.org.au) and following the company on [facebook.com/circacontemporarycircus](https://facebook.com/circacontemporarycircus), [instagram.com/circapresents](https://instagram.com/circapresents), [spotify.com/user/circapresents](https://spotify.com/user/circapresents) and via #circacircus.

TH FEB 23 AT 7:30PM

# THE QUEEN'S CARTOONISTS

*The Queen's  
Cartoonists*



krannert center

---

## **Land Acknowledgement**

The University of Illinois System carries out its mission in its namesake state, which includes the traditional territory of the Peoria, Kaskaskia, Piankashaw, Wea, Miami, Mascoutin, Odawa, Sauk, Mesquaki, Kickapoo, Potawatomi, Ojibwe, Menominee, Ho-Chunk, and Chickasaw Nations. These lands continue to carry the stories of these Nations and their struggles for survival and identity.

As a land-grant institution, the University of Illinois has a particular responsibility to acknowledge the peoples of these lands, as well as the histories of dispossession that have allowed for the growth of this institution for the past 150 years. We are also obligated to reflect on and actively address these histories and the role that this university has played in shaping them. This acknowledgement and the centering of Native peoples is a start as we move forward for the next 150 years.

Krannert Center affirms the commitment by the university to move beyond these statements, toward building deeper relationships and taking actions that uphold and preserve Indigenous rights and cultural equity.

As we gather to experience this performance, we have an opportunity to reflect on the ways that systems of oppression have shaped our society. We can work together to create systems that support human dignity, establish equity, strengthen cross-cultural relationships, and draw upon the creative capacity of all people that make up this community, state, nation, and world.

---



## DINING

Our lobby services are open day and evening to serve you:



**intermezzo cafe**

SUSTAINABLE SPECIALS +  
EVERYDAY INDULGENCES

**STAGE5BAR**

SMOOTH SELECTIONS +  
ARTISANAL APPETIZERS

### WHY WAIT?

Order before you head into the theatre, and we'll have your food and beverages waiting for you at intermission or after the show.



# INVEST IN THE FUTURE OF THE ARTS

Support Krannert Center today



---

### **Connecting People, Creating Happiness**

Krannert Center is committed to providing programs that inspire, engage, challenge, and revitalize. The support of our donors and friends enables the Center to bring in diverse international artists and launch transformative initiatives that foster inclusivity and bring about dynamic change.

**Every contribution counts. Together, we can effect powerful change that will impact generations to come.**

Please consider making a gift to Krannert Center today. Together, we can strengthen the lasting impact of the Center's work, while ensuring that students and the greater community have access to enriching performances and cultural experiences.

Join us as we invest in the future of the arts.

### **Make Your Gift Today**

advancement@krannertcenter.illinois.edu • 217.333.6700  
KrannertCenter.com/Give

### **Would you like to make Krannert Center part of your legacy?**

Contact Cheryl Snyder (217.333.2533 | [casnyder@illinois.edu](mailto:casnyder@illinois.edu))  
or Bethany Whoric (217.300.6042 | [bbwhoric@illinois.edu](mailto:bbwhoric@illinois.edu)) to learn more  
about making a planned gift to Krannert Center for the Performing Arts.

---



# KRANNERT CENTER PHILANTHROPY AND ADVOCACY

Krannert Center’s dedication to the celebration, exploration, and cross-pollination of the arts is advanced through these special programs. Donors who champion such work make it possible for more people in our community to participate in life-affirming experiences.

## 2022-2023 ADVANCEMENT COUNCIL

This passionate group of arts advocates assists Krannert Center staff in expanding the Center’s leadership and financial resources.

### Co-Chairs:

Janet & Douglas Nelson  
Ghazala Ahmad  
Terry & Barbara England  
Michelle Gonzales  
Susan & Michael Haney  
Lisa & Mark Klingner

Leonard (Len) Lewicki  
Marina & Nenad Marjanovic  
Susan & Brendan McGinty  
Tracy Parsons  
Susan & Sam Reese

## 2022-2023 KRANNERT CENTER YOUTH SERIES

The Youth Series features daytime performances, online media created by performing artists, and educational activities designed especially for pre-K through high-school-aged students. Children who participate learn to appreciate the performing arts, gain knowledge, build social skills, and integrate live performance experiences into classroom work. Thank you to our Youth Series sponsors. If you’d like to learn how you can become a sponsor for the Krannert Center Youth Series, please contact Krannert Center Advancement at 217.333.6700 or [advancement@krannertcenter.illinois.edu](mailto:advancement@krannertcenter.illinois.edu).

Bernard and Prudence Spodek  
Endowed Fund  
Ann H. Bender Youth Series  
Endowment  
The Susan Sargeant McDonald  
Endowed Fund for Youth  
Programming (Suzi was  
the founder/developer  
of the Krannert Center  
Youth Series)  
Susan & Michael Haney  
Robert & Mary-Alayne Hughes

Jane & Christian Scherer  
Brenda & Stephen Pacey  
Jill & James Quisenberry  
Carol & Ed Scharlau  
Anne & David Sharpe  
Audrey Ishii & Charlie Smyth  
The Rotary Club of Champaign  
Illinois Arts Council  
National Endowment  
for the Arts

## 2022-2023 CAMPAIGN FOR YOUNG AUDIENCES

Through the Campaign for Young Audiences, students at the U of I enjoy \$10 tickets for nearly every event presented at Krannert Center while other college students and children receive significant discounts. If you’d like to learn how you can become a sponsor, please contact Krannert Center Advancement at 217.333.6700 or [advancement@krannertcenter.illinois.edu](mailto:advancement@krannertcenter.illinois.edu).

### Lead Sponsors



Phyllis Robeson & Family

### Sponsors

Susan & Michael Haney Fund  
for Young Audiences  
Gertrude Brokaw McCloy  
Endowment  
Clarette & Zvi Ritz

Jennifer & Tom Dillavou  
Anke & Paul Tucker  
UpClose Marketing  
and Printing

## KRANNERT SOCIETY

The University of Illinois, the College of Fine and Applied Arts, and Krannert Center are profoundly grateful for the commitment of Krannert Society members. Through donations, pledges, and residual gifts of \$1 million or more, these open-hearted visionaries help build a thriving community and encourage cross-cultural understanding. Their support sustains the extraordinary vision of Herman and Elnora Krannert to create a vibrant gathering place like no other.



**VALENTINE JOBST III** (1904-1993)  
March 1994



**CLAIR MAE ARENDS** (1912-2000)  
**G. WILLIAM ARENDS** (1914-1997)  
March 2000



**MARILYN PFLEDERER ZIMMERMAN**  
(1929-1995)  
**VERNON K. ZIMMERMAN**  
(1928-1996)  
November 2003



**HELEN FARMER**  
**JAMES FARMER** (1931-2020)  
April 2014

## FOELLINGER SOCIETY

Demonstrating their steadfast dedication to the arts, members of the Foellinger Society have donated or pledged \$500,000 to \$999,999. Because of their generosity, everyone in this community can unite in joyful and engaging experiences. These magnanimous arts lovers celebrate the spirit of Helene Foellinger, whose memorial gift honored her sister, Loretta Foellinger Teeple, and established the Marquee Performance Endowment.



AVIS HILFINGER (1915-2004)  
DEAN HILFINGER (1912-2006)  
April 2000



KENNETH ANDERSEN (1933-2020)  
MARY ANDERSEN  
August 2009



CAROLYN G. BURRELL  
April 2012



CAROLE & JERRY RINGER  
April 2014



**EDITH ANN STOTLER**  
(1946-2022)  
August 2017



**K. SARAH SPAULDING**  
(1930-2022)  
Feb 2017



**JANE BUFORD SCHERER & CHRIS  
SCHERER**  
June 2022



**DENA & JIM VERMETTE**  
June 2022

**IKENBERRY SOCIETY**

University of Illinois President Emeritus and First Lady Stan and Judy Ikenberry have long demonstrated their love for the arts and their deep commitment to enhancing learning experiences for all University of Illinois students. Krannert Center gratefully acknowledges their steadfast support by introducing the Ikenberry Society to recognize donated gifts or pledges of \$250,000 to \$499,999.



**JUDITH & STANLEY IKENBERRY**  
September 2014



**JERALD WRAY & DIRK MOL**  
March 2016



**DAVID A. KROOKS**  
August 2016



**HELEN & DANIEL RICHARDS**  
June 2016



**HOLLY & KURT HIRCHERT**  
February 2017



**ANONYMOUS**  
May 2018



**JOAN & PETER HOOD**  
November 2018



**SUSAN & MICHAEL HANEY**  
April 2019



**LYNN WEISEL WACHTEL  
& IRA WACHTEL**  
June 2019



**JOHN & KAY SHANER**  
July 2019



**LEONARD (LEN) LEWICKI**  
May 2021



**JERRY A. CARDEN & TIMOTHY  
W. TEMPLE**  
June 2022



**FRAN & MARC ANSEL**  
June 2022

## COLWELL SOCIETY

Dr. John B. Colwell, Pauline Groves Colwell, and R. Forrest Colwell provided critical funding for the Marquee Performance Endowment, and the Colwell Society gratefully acknowledges their invaluable assistance. Members have donated or pledged \$100,000 to \$249,999 for celebrating, preserving, and exploring the arts right here and around the globe.



**DOLORIS DWYER**  
(1918-1997)  
April 1996



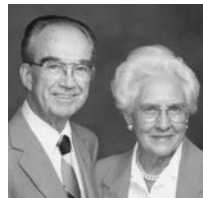
**EMILY GILLESPIE**  
(1909-2000)  
**JAMES GILLESPIE**  
(1905-1999)  
December 1996



**ROSANN NOEL**  
(1932-2018)  
**RICHARD NOEL**  
April 1997



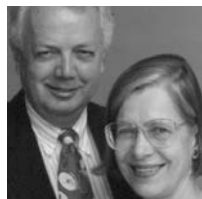
**JAMES W. ARMSEY**  
(1917-2008)  
**BETH L. ARMSEY**  
(1918-2019)  
February 1998



**LOIS KENT**  
(1912-1999)  
**LOUIS KENT**  
(1914-1994)  
October 2000



**JUNE SEITZINGER**  
(1928-2020)  
**GROVER SEITZINGER**  
(1925-2019)  
September 2001



**RICHARD MERRITT**  
(1933-2005)  
**ANNA MERRITT**  
November 2006



**JOHN PFEFFER**  
(1935-2017)  
**ALICE PFEFFER**  
November 2006



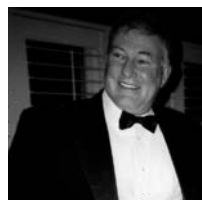
**ANONYMOUS**  
November 2006



**LINDA M. MILLS**  
(1940-2006)  
October 2007



**JUDITH & JON LIEBMAN**  
January 2008



**MICHAEL CARRAGHER**  
(1946-2009)  
September 2008



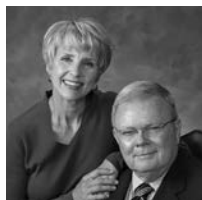
**VIRGINIA R. IVENS**  
(1922-2008)  
February 2009

**THE SUSAN SARGEANT MCDONALD ENDOWED FUND FOR YOUTH PROGRAMMING**  
Suzi was the founder/ developer of the Krannert Center Youth Series  
July 2010



**MISAHO & RICHARD BERLIN**  
October 2010





**DIANA & WARD  
MCDONALD**  
March 2011



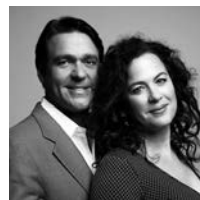
**GRACE & JOHN  
MICETICH**  
March 2011



**JO ANN TRISLER**  
(1946-2010)  
November 2011



**LEA GIESELMAN**  
(1932-2014)  
**BOB GIESELMAN**  
(1932-2015)  
April 2013



**JULIE & NATHAN  
GUNN**  
April 2014



**MICHAEL SWINDLE**  
April 2014



**ANONYMOUS**  
November 2015



**LINDA WEINER**  
(1944-2021)  
**BARRY WEINER**  
February 2017



**ANNE MISCHAKOFF  
HEILES & WILLIAM  
HEILES**  
May 2017



**JILL & JAMES  
QUISENBERRY**  
May 2017



**DALE STEFFENSEN**  
(1922-2018)  
**MARGARET  
STEFFENSEN**  
June 2017



**CECILE & IRA  
LEBENSON**  
December 2017



**BURT SWANSON**  
(1939-2020)  
**IRIS SWANSON**  
December 2017



**TERRY & BARBARA  
ENGLAND**  
April 2018



**PHYLLIS ROBESON  
& FAMILY**  
February 2019  
**KYLE ROBESON**  
(1929-2021)



**JAMES R. FRAME  
& CANDACE PENN  
FRAME**  
April 2019



**MICHAEL &  
MARGARET ROSSO  
GROSSMAN**  
July 2019



**PATRICIA & ALLAN  
TUCHMAN**  
April 2021



**VICTOR FELDMAN  
(1935-2018)  
JUDITH FELDMAN  
(1938-2021)**  
September 2021



**SUSAN & RICHARD  
SCHNUER**  
November 2021



**JUDITH & RICHARD  
KAPLAN**  
February 2022

---

*Donations by society members include estate gifts; outright donations; charitable gift annuities; charitable remainder trusts; gifts of real estate, insurance, and securities; and pledges fulfilled over a period of five years. To explore how you can create your own lasting legacy, contact us at 217.333.6700 or [advancement@krannertcenter.illinois.edu](mailto:advancement@krannertcenter.illinois.edu).*

**2022-2023 MARQUEE CORPORATE & COMMUNITY SPONSORS**

Corporate and community support—both cash and in-kind—deepens Krannert Center’s capacity to inspire public discourse, communal respect, and collective joy. Please join Krannert Center in thanking the following corporate and community sponsors for their support of Krannert Center performances and initiatives.

**Corporate & Community Platinum Sponsors**  
(\$30,000 OR MORE)



**Corporate & Community Lead Gold Sponsors**  
(\$20,000-\$29,999)



**Corporate & Community Gold Sponsors**  
(\$10,000-\$19,999)



**TO JOIN THIS POWERFUL NETWORK** of like-minded professionals while receiving guaranteed visibility and marketing benefits, visit [KrannertCenter.com/Give](http://KrannertCenter.com/Give) or contact Bethany Whoric at 217.300.6042 or [bbwhoric@illinois.edu](mailto:bbwhoric@illinois.edu).

# 2022-2023 GRANTS



DORIS DUKE  
CHARITABLE FOUNDATION

## DORIS DUKE CHARITABLE FOUNDATION

Endowment support from the Doris Duke Charitable Foundation continues to enhance Krannert Center’s presentation of diverse, world-class national and international visiting artistry; supporting the creation of new work; and increasing engagement and collaboration across campus.



## ILLINOIS ARTS COUNCIL

The Illinois Arts Council Agency provides general programing support to ensure that audiences of all ages have direct access to world-class theatre, dance, and music.

## FRANCES P. ROHLEN VISITING ARTISTS FUND/ COLLEGE OF FINE + APPLIED ARTS

This grant, a generous gift from the Rohlen Family.



THIS PROJECT FUNDED BY  
STUDENT SUSTAINABILITY COMMITTEE

## THE STUDENT SUSTAINABILITY COMMITTEE

The Student Sustainability Committee provided funding for the Krannert Center Audiences Lighting Retrofit Project, which continues to increase energy efficiency, decrease labor requirements, and improve safety conditions.



## GEORGE A. MILLER ENDOWMENT PROGRAMS COMMITTEE

The George A. Miller Endowment Programs Committee supports CultureTalk.

## THE AUGUSTINE FOUNDATION

### THE AUGUSTINE FOUNDATION

The Augustine Foundation provides continued major support for ELLNORA | The Guitar Festival.

MARQUEE PATRON SPONSORS

Krannert Center is grateful for the passion and commitment of the following individuals whose gifts support the expansive range of experiences offered at Krannert Center: formative moments for tomorrow’s global leaders, performances that comfort and transform, opportunities to create and enjoy groundbreaking work, engagement activities that offer self-discovery and hope, architectural treasures to delight the senses, and remarkable moments to foster lifelong memories. If you’d like to learn more about how to become a sponsor, please contact Krannert Center Advancement at 217.333.6700 or advancement@krannertcenter.illinois.edu.

Endowed Underwriters

(\$10,000 OR MORE PER EVENT)

Clair Mae & G. William Arends  
Avis & Dean Hilfinger  
Judith & Stanley Ikenberry  
Valentine Jobst III  
Edith Ann Stotler  
Marilyn Pflederer & Vernon K. Zimmerman

Endowed Sponsors

(\$5,000-\$9,999 PER EVENT)

Mary & Kenneth Andersen  
Beth & James Armsey  
Doloris Dwyer  
Terry & Barbara England  
Helen & James Farmer  
Lois & Louis Kent  
Carole & Jerry Ringer  
June & Grover Seitzinger  
Sarah K. Spaulding  
Bernard and Prudence Spodek Endowed Fund

Endowed Co-sponsors

(\$2,500-\$4,999 PER EVENT)

Ann H. Bender Youth Series Endowment  
Victor & Judith Feldman  
Lena & Bob Gieselman  
Emily & James Gillespie  
Margaret Rosso Grossman & Michael Grossman  
Joan & Peter Hood  
Virginia R. Ivens  
Anna Merritt  
The Susan Sargeant McDonald Endowed Fund for Youth Programming (Suzi was the founder/developer of the Krannert Center Youth Series)  
Joanne & Charles McIntyre  
Mildred Maddox Rose  
Kay & John Shaner  
Jo Ann Trisler  
Pat & Allan Tuchman

Campaign for Young Audiences

Anonymous  
Jennifer & Tom Dillavou  
Susan & Michael Haney Fund for Young Audiences  
Gertrude Brokaw McCloy Endowment  
Clarette & Zvi Ritz  
Phyllis Robeson & Family  
Anke & Paul Tucker  
UpClose Marketing and Printing

Patron Underwriters

(\$10,000 OR MORE PER EVENT)

Anne Slichter

Patron Sponsors

(\$5,000-\$9,999 PER EVENT)

Carol & Willis Colburn  
Beverly & Michael Friese  
Lois & Ernest Gullerud  
Judith & Richard Kaplan  
Cecile & Ira Lebenson  
Judith & Jon Liebman  
Iris & Burton Swanson  
Shirley & Arthur Traugott

Patron Co-sponsors

(\$2,500-\$4,999 PER EVENT)

Amy & Matthew Ando  
Frances & Marc Ansel  
Dianna Armstrong  
Jim Barrett  
Robert Bender  
Beth & David Chasco  
Harriet & Herschel Cline  
Emmie Fisher  
Susan & Michael Haney  
Janice Bahr & Erwin Hoffman  
Diane Gottheil  
Marianne Kalinke  
Lisa & Mark Klinger

Leonard (Len) Lewicki  
Ann & Stephen Long  
Gigi & Frank Miles  
Martha & Thom Moore  
Claudia Reich & Gary Olsen  
Brenda & Stephen Pacey  
Dr. Jan Marie Aramini & Michael Pettersen  
Mildred Maddox Rose  
Anne & David Sharpe  
Carol & Franklin Shupp  
Mary Schuler & Stephen Sligar  
Masako Takayasu  
Pat & Allan Tuchman  
The Weiner Family  
Karen & William Wilkinson  
Sarah & Charles Wisseman

HELP ENSURE THE IMPACT OF THE

**ARTS** for future generations by becoming a donor today. Visit [KrannertCenter.com/Give](http://KrannertCenter.com/Give), contact us at 217.333.6700 or [advancement@krannertcenter.illinois.edu](mailto:advancement@krannertcenter.illinois.edu).

## MARQUEE CIRCLE AND LOOP MEMBERS

We gratefully acknowledge these individuals and businesses for their generosity and commitment to the arts. Their support enabled the Center to welcome back in-person audiences for Music, Theatre, Dance, and visiting artist productions this past season. Krannert Center continues make accessibility improvements, co-commission works to help support artist partners, and focus on engagement work within the community. If your membership has lapsed and you'd like to renew, please contact Krannert Center Advancement at 217.333.6700 or [advancement@krannertcenter.illinois.edu](mailto:advancement@krannertcenter.illinois.edu).

[LIST CURRENT AS OF AUGUST 26, 2022]



Ghazala Ahmad  
 Melissa Huff & Richard Alkire\*  
 Walter Alspaugh  
 Nadja & Carl Altstetter  
 Marlys Scarbrough & Chet Alwes  
 Ruth & James Anderson  
 Colleen Chon & Quintin Anderson  
 Amy & Matthew Ando  
 Frances & Marc Ansel\*  
 Dianna Armstrong\*  
 Judith Bach  
 Barbara E. Barnes  
 Tangül & Tamer Basar  
 Diane A. Tasca & Norman Beamer  
 Sherry & Nelson Beck  
 Carol & Carl Belber  
 Dorothy Bell  
 Erica & Alessandro Bellina  
 Carol Berthold  
 Mary Blair  
 Doug Blair  
 Marsha Clinard & Charles Boast  
 Abbie & Mike Broga  
 Elizabeth & Michael Brunk  
 Annette & John Buckmaster  
 Joyce & Rabel Burdge  
 Jayne & Richard Burkhardt Jr.  
 Carolyn G. Burrell  
 Ann & Roy Campbell  
 Helen & Andreas Cangellaris  
 Timothy Temple & Jerry Carden  
 Nancy & Allen Carter  
 Beth & David Chasco  
 Kathleen & Felix Cimaskasy  
 Harriet & Herschel Cline  
 Carol & Willis Colburn

Casey Sutherland & Linda Coleman  
 Tina & John Colombo  
 Jongin & Robert Craggs  
 Janis Chadsey & Al Davis  
 Deborah Day  
 Elizabeth Cardman & Paul Debevec  
 Richard DeLong  
 Dixie & Evan Dickens\*  
 Jennifer & Tom Dillavou  
 Anastasia & James Economy  
 Ann Einhorn  
 Jo & Thomas Emerson  
 Paul Ellinger  
 Karen & Michael Folk  
 Shari & Ben Fox  
 Beverly & Michael Friese  
 Michael Fuerst  
 Nancy & Bert Fuller  
 Victoria Christensen & Gary Gladding  
 Melanie Loots & George Gollin\*  
 Shirley Soo & Matthew Gorman  
 Diane Gottheil  
 Ondine & George Gross  
 Margaret Rosso Grossman & Michael Grossman  
 Lois & Ernest Gullerud  
 Julie & Nathan Gunn  
 Susan & Michael Haney  
 Sharon & Terence Harkness  
 Ron Harshman  
 Gözen & Chris Hartman\*  
 Kathleen Harvey  
 Clare & Alan Haussermann  
 Jane Trishman Heaton  
 Betsy Hendrick  
 Jan & Bruce Hinely  
 Ellen Hinterlong  
 Holly & Kurt Hirschert  
 Kathryn Rybka & Darrell Hoemann  
 Photography  
 Janice Bahr & Erwin Hoffman  
 Joan & Peter Hood

Mary-Alayne & Robert Hughes  
 Peggy & Christopher Huson  
 Ingrid & Bruce Hutchings  
 Laura & Gale Jamison  
 Nancy Johnson  
 Ronald Johnson  
 Joan Volkmann & John Jones  
 Martha Ann Jones  
 Patricia & James Jurgens  
 Patricia & Peter Kale  
 Marianne Kalinke  
 Judith & Richard Kaplan  
 Paula Kaufman  
 Josephine & Douglas Kibbee  
 Brenda & Peter Kimble  
 Lisa & Mark Klinger  
 Antje & Edward Kolodziej  
 Wynne Sandra Korr  
 Sheila & Philip Krein  
 Marion & Herman Krier  
 Nancy Parker & James Kuklinski  
 Cecile & Ira Levenson\*  
 Brenda Lerner-Berg  
 Emily Levin  
 Diana Sheets & Stephen Levinson  
 Leonard (Len) Lewicki  
 Kun Jiang & Xuan Li  
 Judith & Jon Liebman  
 Ann & Stephen Long  
 Kathryn & Stephen Marshak  
 Leslie & Gary Mason  
 Betsy Bachmann & Rebecca McBride  
 Gertrude Brokaw McCloy Endowment  
 Erica & Malcolm McClure  
 Carolyn and Dale McElrath  
 Susan & Brendan McGinty  
 Mrs. Jack H. McKenzie  
 Anna Merritt\*  
 Theresa & Bruce Michelson  
 Gigi & Frank Miles  
 Elizabeth & George Miley  
 Sallie & Norman Miller



Jerald Wray & Dirk Mol\*  
Martha & Thom Moore\*  
Jane & Walter Myers  
Janet & Douglas Nelson\*  
A. Mark Neuman  
Debra Lee & Ty Newell  
Peter Newman & Jermone Ng  
Claudia Reich & Gary Olsen\*  
Brenda & Stephen Pacey  
Jean Paley  
Donald Perrero  
Marjorie Perrino  
Carolyn & Todd Petersen  
Alice Pfeffer\*  
Kathleen A. Holden & David  
Prochaska  
Jill & James Quisenberry\*  
Gloria Rainer  
Arlene & Julian Rappaport  
Lois & Robert Resek\*  
Karen & Michael Retzer  
Helen & Daniel Richards\*  
Marlyn Rinehart  
Carole & Jerry Ringer\*  
Clarette Ritz  
Phyllis Robeson  
Lisa & Eric Robeson  
Taya & Mike Ross  
Christie Roszkowski  
Deborah & Brian Ruddell  
Deborah & Stephen Rugg\*  
Jane & John Santogrossi  
Shozo Sato  
Carol & Ed Scharlau\*  
Jane & Christian Scherer  
Susan & Richard Schnuer  
Kim Robeson-Schwenk & Dean  
Schwenk\*  
Kay & John Shaner  
Anne & David Sharpe  
Trent Shepard  
Janice Sherbert  
Jan & David Sholem  
Carol Shupp  
Patricia & Charles Simpson  
Brenda & Dale Slack  
E. Jean Smith  
Mary Schuler & Stephen Sligar  
Audrey Ishii & Charles Smyth  
Prudence Spodek  
Elaine & Case Sprenkle  
Cecile Steinberg  
Margaret Stillwell  
Edith Ann Stotler

Patricia Plaut & Kenneth Suslick  
Iris & Burton Swanson\*  
Cynthia Swanson  
Jason & Michelle Swearingen  
Bonnie & Bob Switzer  
Masako Takayasu\*  
Nancy & Edward Tepper  
Ray Timpone  
Marie Griffith Tompkins  
Joan & Walter Tousey  
Shirley & Arthur Traugott\*  
Devon Hague & Dallas Trinkle  
Pat & Allan Tuchman\*  
Anke & Paul Tucker  
Carl L. Vacketta  
Dena & Jim Vermette  
Stella & Max Volk  
Lynn Weisel Wachtel & Ira Wachtel  
Chip Walgren  
Joy Thornton-Walter  
Aimee & John Ward  
Paula Watson  
Barry Weiner  
Susan & Robert Welke  
Sarah Wigley  
Rebecca & Paul Wigley  
Karen & William Wilkinson  
Sarah & Charles Wisseman  
Patricia Cassidy & Andrew Wycislak  
Elaine & Harold Yoon  
Joan & Theodore Zernich

And gifts from four Anonymous  
donors

---

### **Memorial Gifts to the Marquee Circle**

James Economy  
Kun Jiang & Xuan Li  
Rosann Noel  
Matthew Noel  
George B. Perlstein  
Anonymous  
Amy A. Rappaport-Lo  
Arlene & Julian Rappaport  
Donald R. Sherbert  
Janice Sherbert & Family  
James Barrett in memory of  
Jane M. Barrett

---

\*Former member of the Krannert  
Center Advancement Council



Pat Januszki & Dick Adams  
Ellen & Gene Amberg  
Jane Archer  
Carol & Richard Arnould  
Charlotte Arnstein  
Grace Ashenfelter  
Susan & G. Tim Bachman  
Joseph Barnes  
Paula & Clifford Barnes  
Sandra & Ritchie Barnett  
Jim Barrett  
Jane & Peter Barry  
Rita Bartholomew  
Kathleen & S. Eugene Barton  
Ronald & Susan J. Bates  
Norma Bean  
Mary Beastall  
Susan & Wayne Bekiares  
Dorothy & James Bennett  
Kathleen & John Lansingh Bennett\*  
Laura & Kenneth Berk  
Mary & Kenneth Beth  
Carol & Richard Betts  
Debra & Kenneth Bezan  
Sue Biddle  
Bruce Bonds  
Tamara Bouseman  
Hannah & Justin Brauer  
Amy Mueller & James Brennan  
Liora & Yoram Bresler  
Margaret & Donald Briskin  
William Brooks  
Channing Brown  
Donald Buss  
David Campbell  
Louise Walczak & Joseph Carey  
Sandra Carr  
Susan Hinrichs & Alan Carroll  
Donna & Steven Carter  
Sandra Casserly  
Elaine Bearden & Craig Chamberlain  
Alexander Chang  
Chen Chen  
Matthew Chen  
Eileen & Dennis Coleman  
Deborah Cook  
Janet & William Coombs  
Nancy & Fred Coombs

Ruth Cortright  
Kathleen Vance & Charles Cowger  
Nancy Creason  
Sandra & Luis Cuza  
Elizabeth & Robert Czyns  
Millie Davis  
Susan Meinkoth & Peter Davis\*  
Lucia & Ron Deering  
Nancy & Harold Diamond  
Deborah & Joseph Dipietro  
Terri Dodson  
Jean Driscoll  
John & Astrid Dussinger  
Ellen & Douglas Elrick  
Rhoda Engel  
E. R. Ensrud  
Breanne Ertmer  
Sharol & Victor Escobar  
Jane Mohraz & A. Belden Fields  
Kim & Allan File  
Sandy & Joe Finnerty  
Rebecca Netti-Fiol & Stephen Fiol  
Sue Anne & Don Fischer  
Judith & Dale Flach  
Catherine Flood  
Kristin & James Flores  
Rose Marie & Brendan Foley  
Barbara Ford  
Tracey Ford  
Priscilla & Andrew Fortier  
Claudia & Eduardo Fradkin  
Natalie Frankenberg  
Karen & Alain Fresco  
Richard Furr  
Pamela & Samuel Furrer  
Janet Kalmar & Benjamin Galewsky  
Laurie Rund & Rex Gaskins  
Evelyn & Joseph Gill  
Derek Girtton  
Brian Gonner  
Nancy Goodall  
Rose & William Goodman  
Karen Grano  
Susan & Lewis Greenstein  
Karl Greve  
Judith & Michael Griffin  
Phyllis Gron  
Kimiko Gunji  
Lila Sullivan & Don Gunning  
Karen Greenwalt & David Hamilton  
K.S. & Torin Hannan  
Karen & David Harris  
Cynthia Capek & Edward Harvey  
Jenny & Dick Harvey  
Susan Bonner & Dena Hasselbring  
Dauna Hayman  
Christine & Bruce Hegemann  
John Heiligenstein

Marne Helgesen  
Deloris & Grant Henry  
Mary Henson  
Thomas Herbold  
Susan & Edwin Herricks  
Herbert Hiestand  
Caroline Phelps & Patrick Higgins  
Shawna Scherer & Steve Higgins  
Bonnie & Steven Hill  
Paul Hinson  
Jennifer & Paul Hixson  
Zarina & Hans Hock  
Laurie & Robert Hodrick  
Kay Hodson  
Judith Hoffman  
Marilee & Robert Hoffswell  
Jean Holley  
Edit & Leland Holloway  
Jessie Houston  
Laura Keller & Robert Hurst  
Michael Lambert & Timothy Hutchison  
Janice Impey  
Andrew Ingram  
Margaret Inman  
Dixie & Gary Jackson  
Elizabeth & Henry Jackson  
Meghan & Cyril Jacquot  
Janet Elaine Guthrie & Mark Jaeger  
Helen & Francis Jahn  
Daniel Jensen  
Bruce Johnson  
Elizabeth Johnston  
Patricia & John Jordan  
JoAnn McNaughton Kade & Christopher Kade  
Aaron Kaplan  
Janeane Keller  
JoAnne & James Kenyon  
Beverly & George Kieffer  
Janice Kimpel  
Margaret Patten & Todd Kinney  
Nancy Kintzel  
Jeffrey & Patricia Kirby  
Gerri Kirchner  
Julia Kling  
Patricia & Frank Knowles  
Laura & Kipling Knox  
Christa Knust  
Marilyn Kohl  
Jean & Thomas Korder  
Barbara & Gary Koritz  
Shari L. Kouba  
Elizabeth & David Krchak  
Susan & Curtis Krock  
Marilyn & Don Krummel  
Carrie & Richard Kubetz  
Judith Kutzko

James Land  
Sharon Irish & Reed Larson  
Janet Schultz & Russell Lascelles  
Linda Lebie  
Shung-Wu Lee  
Carol Leff  
Jean Halstead & Beth Lehman  
Cecilia & Robert Lentz  
Joyce Meyer & Faye Lesht  
Patricia & Vernon Lewis  
Cynthia & Michael Loui  
Ann Lowry  
Robin Luebs  
Janice & Joseph Maddox  
Suzanne & John Magerko  
Marguerite & Walter Maguire  
Christine & David Main  
S. Pauline & Mankin Mak  
Tracey & J. Victor Malkovich\*  
Kate Malmsbury  
Norma & Herbert Marder  
Suzanne & Robert Martensen  
Madonna & Phillip Matteson  
Dwayne D. McBride  
Teri McCarthy  
Jane & Michael McCulley  
Mari McKeeth & Heidi Weatherford  
Alina Reeves & Joseph Meier  
Carol & David Meitz  
Christen Mercier  
Kathleen & Alan Metcalf  
Sharon & David Mies  
Lynda & John Minor  
Charlotte Mattax Moersch & William  
Moersch  
Linda & Mark Moore  
Anna Louise & Terry Moore  
Liz & Dan Morrow  
Diane Mortensen  
Cara Finnegan & John Murphy  
Catherine & Robert Murphy  
Lloyd Murphy  
Lucy Miller Murray & Martin L. Murray  
Paul Nash  
Jane & Alan Nathan  
Carol Neely  
Jeffrey Nelson  
Eve Harwood & Mark Netter  
Jack Nibling  
Lynda Dautenhahn & Lee Nickelson  
Roxanna Nixon  
Holly Nordheden  
Jenene & Richard Norton  
Valerie & Thomas Oakley  
Charles Oellermann  
Donna & Paul Offenbecher  
Janice Olson

David Ostrodka  
Terry Conour & Georgia Oswald  
Tracy Parsons  
Carolyn & Larry Pater  
Esther Patt  
Donna Cox & Robert Patterson  
Vicki & Robert Patton  
Lois Pausch  
Jean & G. David Peters  
Linda & Lyn Peterson  
Mary Phillips  
Ann & Keith Pollok  
Karen Rao  
Lori Rath  
Judith Rathgeber  
Margaret A. Reagan  
Susan & Sam Reese  
Julie & William Rettberg  
Carole & Adam Richardson  
Charles Rohrbaugh  
Thomas Rozanski  
The Walter E. Rucker Family  
Deborah Allen & Howard Schein  
Peggy Schickedanz  
Susan K. & Paul K. Schlesinger  
John Schneider  
Grace & William Schoedel  
Kathleen & Mark Schoeffmann  
Karl Heinz Schoeps  
Dawn Schultz  
Vicki Schumacher  
Patricia Fowler & Jose Schutt-Aine  
Geraldine Sczygiel  
Philip J. Seldis  
Rochelle Sennet  
Alys & Daniel Shin  
Lily Siu  
Elzbieta & Piotr Skorupa  
Deborah & James Smith  
Elyse Rosenbaum & Robert Smith  
Marianne Abbey-Smith & Campbell  
Smith  
Avigail & Marc Snir  
Melissa Breen & Cheryl Snyder  
Leellen & Philip Solter  
Penelope & Anthony Soskin  
Nancy Sottos  
Peter Cohen & Jeffrey Sposato  
Beth Stafford  
Deborah Stewart  
Gary Stitt  
Andrea Beller & Kenneth Stolarsky  
Tara & Jeff Swearingen  
Ellen & Thomas Swengel  
Catherine Thurston  
Diane Durbin & David Tjaden  
Jonathan Trupin

Joan & Stanley Tunnell  
Julia & Thomas Ulen  
Grant Ullrich  
Candice & Frederick Underhill  
Chris Vallillo  
Anne Silvis & Albert Valocchi  
Cynthia Vandeventer  
Helen Vedder  
Carol Veit  
Linda & R. E. Veltman  
Julie Mason-Vermeulen & Paul Henri  
Vermeulen  
Alice & Leon Waldooff  
Shirley Walker  
June & Ashton Waller  
Shengze Wang  
Diane & James Wardrop  
Ann & Ronald Webbink  
Cheryl & Russ Weber  
Carl Pius Weibel  
Larry Weinberg  
Elizabeth Weiss  
Michelle & Michael Wellens  
Janice & Gail Wernette  
Deborah & Michael Westjohn  
Paul E. Weston  
Karen & John Whisler  
Stephanie Daniels & Steven White  
Karen Taylor Willis & Tymothé Willis  
Susan & Mark Wisthuff  
Ava & Richard Wolf  
Timothy Wong  
Janie & Ehud Yairi  
Wendy & Glen Yang  
Rittchell & Peter Yau  
Michael Yonan  
Ruth Yontz  
Sally & Stephen Zahos  
Zhongmin Zhu  
Yvonne & Gerard Ziegler  
Maureen Reagan & Bruce Zimmerman  
Sharon Ravitt & Steven Zimmerman  
Jillian & Christopher Zwilling

And gifts from five Anonymous donors

---

### **Student Loop**

Pyunghwa Choi  
Abhishek Joshi  
Hannah Leung  
Xuhao Luo  
Mingyue Yu  
Minshan Wei

---

### **Memorial Gifts to the Loop**

Robert L. Bender  
 Amy Chrise  
 Margaret & Scott Cline  
 Susan & Michael Haney  
 Betsy Hendrick  
 Cherie & William Hodrick  
 Laurie & Robert Hodrick  
 Ingrid & Bruce Hutchings  
 Judith & J.T. Iversen  
 Elizabeth Johnston  
 Mary & L.R. Jones  
 Kimberly & Donald Knoche  
 Barbara & Gary Koritz  
 Linda & J.B. Luedeke  
 Suzanne & John Magerko  
 Sarah & Robert Nemeth  
 Charles Oellermann  
 Lois & Robert Resek\*  
 The Walter E. Rucker Family  
 Sheleen Sandberg  
 Julia & Thomas Ulen  
 MaryBeth Walker  
 Alex P. Bhanos  
 Susanne Bhanos  
 George R. Carlisle  
 Debra & Kenneth Bezan  
 James Economy  
 Donna Decamara & Chris Dangles  
 Anthony DeStefano  
 Kelly & Danny Frich  
 Melanie Loots & George Gollin\*  
 Yongqing Huang  
 Tiffany & James Langer  
 Catherine & Jay Menacher  
 The Orphanos Family  
 Deba & Nihal Parkar  
 Diane & Thomas Shipp  
 Shelby & John Stifle  
 Iris & Burton Swanson\*  
 Yin Liu & Jinwen Wang  
 Ling Wang & Zhongren Yue  
 Donald A. Fischer  
 Sue Anne Fischer  
 Doris H. Harvey  
 Vicki & Alan Good  
 Jenny & Dick Harvey  
 Grace F. Homma  
 Sweeny Joog  
 Susan S. McDonald  
 Anonymous  
 Charles J. & Joanne J. McIntyre  
 The McIntyre Family  
 Diane K. Miller  
 Ann Einhorn  
 Marilyn J. Nichols  
 K.S. & Torin Hannan  
 Howard & Jean Osborn  
 Beverly & Michael Frieze

Jean Osborn  
 Rachel Halfar  
 Judith Miller  
 Ellen & Thomas Swengel  
 George B. Perlstein  
 Rita & Arnold Blockman  
 Toby & Ralph Bransky  
 Harriet & Kenneth Cooke  
 Reva & William Eggherman  
 Ann Einhorn  
 Kristin Fasy  
 Beverly & Michael Frieze  
 Susan & Lewis Greenstein  
 Bonnie & Steven Hill  
 Nancy & Kenneth Kirsch  
 Lynda & John Minor  
 Joan & Anthony Peressini  
 Nancy Pickus  
 Barbara Powell  
 Gloria Rainer  
 Vicki Schumacher  
 JoAnn Murray-Spencer & Clifford  
 Spencer  
 Cecile Steinberg  
 Iris & Burton Swanson  
 Elizabeth Talbot  
 Nancy Tennant  
 Nancy & Edward Tepper  
 Ellen Walbert  
 Christie Watkins  
 Larry Weinberg  
 Kathryn M. Romans  
 The Karmia Family  
 Cynthia & Edward Pillar  
 Bernadine & Ed Pillar  
 Julia & Casey Wold  
 Melvin Rubin  
 Lesley Rubin  
 Robert Malik Winter  
 Sarah Hasib  
 Pete & Molly Yunyongying

---

\*Former member of the Krannert  
 Center Advancement Council

---

# KRANNERT CENTER VOLUNTEERS

## COMMUNITY VOLUNTEERS

Paula Abdullah  
Nisha Aggarwal  
Elizabeth Allison  
Harold Allston  
Brant Asplund  
Tammy Asplund  
Mike Atkinson  
Debora Avelino  
Ron Baker  
Jane Barry  
Heather Baseler  
Pam Bedford  
Paul Beinhoff  
Janice Bellington  
Ann Bergeron  
Kathy Bergeron  
Priya Bhatt  
Shohan Bhattacharya  
Karen Bojda  
Brunna Bozzi  
George Brock  
Jonne Brown  
Krishni Burns  
Mark Casco  
Felix Chan  
Yoline Chandler  
Coco Chen  
Wen-Chi Chen  
Kathleen Corley  
Kathleen Correa  
Jessica Crane  
Jessica Dager  
Millie Davis  
Cara Day  
Kasandra Delafuente  
Lori Deyoung  
William Dick  
David Dorman  
Astrid Dussinger  
Kathy Dwyer  
Sheryl Dyck  
Peter Dyck  
Debra Eichelberger  
Stacey Elliott  
Beth Engelbrecht-Wiggans  
Richard Engelbrecht  
-Wiggans  
Roger Epperson  
Vennie Ewing  
Elizabeth Faulkinberry  
Judy Federmeier  
Cliff Federmeier  
Dee Feickert  
Andrea Fierro

Peter Floess  
Patricia Floess  
B. Jean Flood  
Richard Flood  
Elizabeth Frankie  
Roger Fredenhagen  
Bianca Galvez  
Zeidy Garcia  
Inga Giles  
Emma Glezer  
Robin Goettel  
Michelle Gonzales  
Gene Grass  
Sandy Haas  
Catherine Haney  
Katherine Hansen  
Susan Hansen  
Tonya Hartman  
Mike Havey  
Kathy Havey  
Judith Haydel  
James Hayes Jr.  
Kate Heiberger  
Cynthia Helms  
Kathy Henry  
Abby Heras  
Joan Hood  
Peter Hood  
Mary Hosier  
Betsy Hunter  
Ingrid Hutchings  
Elizanena Ibarra  
Janice Impey  
Laurie Jacob  
Roland Jean  
Cynthia Jean  
Sten Johansen  
Diana Johnsn  
Marcy Joncich  
Carlton Kagawa  
Debra Karplus  
Karan Keith  
Janeane Keller  
Patti Ketchmark  
Ashley Kirby  
Daniel Krehbiel  
Spencer Landsman  
Linda Larson  
Diane Lassila  
Warren Lavey  
Josephine Lee  
Hannah Lee  
Eunsun Lee  
Vincent Leonard  
Jennifer Lin  
Fei Lin

Feikai Lin  
Xiao Lin  
Sheila Loosevelt  
Penny Lopez  
Lynda Lopez  
Robert Lou  
Ginger Lozar  
Michelle Lynn Gill  
Janice Maddox  
Marguerite Maguire  
Mary Manley  
Marina Marjanovic  
Nenad Marjanovic  
Nicole Martinez  
Bobbi McCall  
Teri McCarthy  
Sarah McDougal  
Jim McEnerney  
Linda McEnerney  
Liz McMillen  
Susan Meinkoth  
Kathy Metcalf  
Sharon Mies  
David Mies  
Martha Milas  
Carol Miles  
Carol Miller  
Michael Miller  
Julie Mills  
Patrick Mills  
Jihyeon Min  
Margrith Mistry  
Frank Modica  
Martha Moore  
Thom Moore  
Pnina Motzafi-Haller  
Christina Myers  
Jane Myers  
Manisha Naganatanahalli  
Linda Neider  
Michael Nelson  
Peter Newman  
Jerome Ng  
Johnson Nguyen  
Dick Norton  
Saray Ocampo  
Alejandra Ochoa  
Marjorie Olson  
Carol Osgood  
Brenda Pacey  
Cynthia Perez  
Pezz Pezz  
Joel Plutchak  
Renee Potter  
Carolyn Presley  
Robbie Pulliam

James Quisenberry  
Jill Quisenberry  
Anne Raczak  
Beverly Rauchfuss  
Sam Reese  
Victoria Rice  
Monique Rivera  
Marcelo Rosa Mazzocato  
Laurel Rosch  
Joyce Ruder Jackson  
Tanya S  
Faaiza Saif  
Corinne Saldeen  
Uriel Sanchez  
Jean Sandall  
Christian Sarol  
Barbara Schleicher  
Dawn Schultz  
Izzy Scott  
Christel Seyfert  
Lei Shanbhag  
Edward Snyder  
Isaac Soloveychik  
Jennifer Steele  
Carolyne Stewart  
Margaret Stillwell  
Carrie Storrs  
Judy Swiger  
Weifeng Sun  
Casey Tan  
John Taylor  
Alice Taylor  
Adrian Testo  
Jamie Thomas-Ward  
Lee Trail  
Pat Tuchman  
Allan Tuchman  
Barbara Turner  
Julia Ulen  
Lynda Umbarger  
Valeria Vargas  
Dianna Visek  
Frank Vivirito  
Kathy Vivirito  
Louise Walczak  
Spencer Walden  
Anna Maria Watkin  
Jean Weigel  
Whitney Welsh  
Linda Wessels  
Jasmine White  
Kathy Wicks  
Liesel Wildhagen  
Diane Wilhite  
Ed Wilhite  
Douglas Williams

Susie Wright  
Lei Xia  
Yu Xia  
Nancy Yeagle  
Sally Zahos  
Jennie Zermeno  
Nicole Zhang  
Rui Zhao  
Wenbin Zhou  
Bruce Zimmerman

## KRANNERT CENTER STUDENT ASSOC. Administrative Board

Diana Pham, President  
Alexa Bucio, Vice President  
Rochelle Tham, Secretary  
Trevor Santiago, RSO  
Liaison Officer  
Judy Chiang, Event  
Coordinator  
Emily Yan, Website Chair  
Cedric Mathew, Treasurer

## Members

Aki Akhauri  
Michelle Burns  
Jingwen Dai  
Rowan Frantz  
Elena Gonzalez  
Jessica Gossen  
Stanley Gu  
Ally Guo  
Hayley Kelleck  
Haley Kennedy  
Ryan Lin  
Xiao Lin  
Jenny Liu  
Seren Liu  
Sian Liu  
Yuanze Luo  
Christine Millins  
Samantha Moran  
Jess Nathan  
Daniel Oster  
Yueting Su  
Fu Sun  
Haley Van Patten  
Claire Wu  
Xuan Yi  
Andy Yoon  
Menghao Yu  
Yangxue Yu  
Lucia Zhang  
Valerie Zhao

---

# KRANNERT CENTER STAFF

---

Mike Ross, Director  
Terri Anne Ciofalo, Associate Director  
for Production  
Maureen V. Reagan, Associate Director  
for Marketing

---

## EVENTS

Andrew Giza, Events Director  
Andrew Almeter, Senior Production  
Coordinator for Events  
Bree Brock, Production Coordinator  
for Events  
Seth Wheeler, Technical Coordinator  
for Events

---

## PROGRAMMING AND ENGAGEMENT

Jason Finkelman, Artistic Director of  
Global Arts Performance Initiatives  
Emily Laugesen, Co-Director of  
Engagement  
Sam Smith, Director of Civic Engagement  
and Social Practice

---

## ADVANCEMENT

Cheryl Snyder, Director of Advancement  
Bethany Whoric, Assistant Director  
of Advancement  
Ellen Fred, Advancement Support  
Associate

---

## FINANCE AND OPERATIONS

### Business Office

Katie Brucker, Debbie Delaney, Stacey  
Elliott, Shelly Thomas-Eichorn,  
Accounting Staff  
Tara Heiser, Human Resources Support

## Building Operations

John O. Williams, Facility Manager  
Tony Mapson, Assistant Facility Manager  
Joe Butsch, Building Electrician  
Jared Painter, Assistant Chief Building  
Operations Engineer  
Scott Butler, Eric Carr, Emmett Catlin,  
Austin Dearth, John Ekstrom, Bryan  
Franzen, Mark Lashbrook, Jacob  
Lerch, Kevin Logue, Jessica Fancher,  
Attendants  
Glenda Dalton, Office Support Associate

---

## MARKETING

Maureen V. Reagan, Associate Director  
for Marketing

## Communications

Sean Kutzko, Assistant Communications  
Director  
Nicholas Mulvaney, Senior Designer  
Jodee Stanley, Program and Web Editor

## Public Services

Lisa Lillig, Client & Food Services Director  
Elizabeth Henke, Catering Manager  
Michael Bunting, Intermezzo Supervisor  
Zia Moon, Krannert Center Showcase  
Director, Office and Communications  
Support Specialist  
Whitney Havice, Interim Ticketing and  
Patron Services Director  
Ty Mingo, Assistant Ticket Services  
Director  
Jon Proctor, Nick Wurl, Ticket Sales  
Supervisors  
Ann-Marie Dittmann, Patron Services  
Assistant Director  
Adrian Rochelle, Front of House  
Performance Supervisor

## PRODUCTION

Terri Anne Ciofalo, Associate Director  
for Production

## Audio Department

Rick Scholwin, Audio Director  
Alec LaBau, Associate Audio Director/  
Video Director

## Costume Shop

Andrea Bouck, Costume Director  
Richard Gregg, Costume Rentals Director/  
Wardrobe Adviser  
April McKinnis, EB McTigue,  
Cutters/Drapers  
Julianna Steitz, Kari Little-McKinney,  
Theatrical Stitchers

## Lighting Department

Lisa Kidd, Lighting Director  
David Krupla, Associate Lighting Director

## Properties Department

Adriane Binky Donley, Properties Director  
Kira Lyon, Assistant Properties Director

## Scene Shop

Ryan Schultz, Technical Director  
Tatsuya Ito, Associate Technical Director  
Bill Kephart, Scene Shop Chief Clerk  
Bobby Reynolds, Theatrical Scene Shop  
Assistant  
Liam Romano, Theatrical Scene Shop  
Assistant

## Stage Management

Cynthia Kocher, Production Stage Manager

---

# WE'RE SO GLAD YOU'RE AT THE CENTER

We work to create the best possible setting for the experiences you seek and find here.

## NECESSARIES

Restrooms are located in the foyers of Foellinger Great Hall, Tryon Festival Theatre, and Colwell Playhouse; the east entrances on the Lobby level; and in each elevator lobby on Level 1 and Level 3. Lobby restrooms and one restroom in each elevator lobby are fully accessible and contain baby-changing stations.

Ushers will be happy to provide you cough drops courtesy of St. Joseph Apothecary, or disposable foam earplugs if the place starts rockin'.

If you or a companion needs medical assistance, contact an usher or other staff member.

Please take a moment before the performance to note the theatre exits nearest to you. If it becomes necessary to evacuate the theatre, please remain calm, follow the instructions of the house staff, and exit in an orderly fashion to the appropriate safe meeting location, which will be announced to you.

## SIGHTS AND SOUNDS

The use of cell phones, cameras, and recording devices during performances is prohibited unless otherwise announced from the stage.

## LATE ARRIVALS

As a courtesy to performers and audience members, latecomers will be seated only at times selected in advance by the artist. Should you find that you've arrived late to a performance, our Patron Services staff will keep you informed about the earliest seating opportunity.

## LOST ITEMS

If you are in need of Lost and Found, please visit the Patron Services counter. We will do our best to reunite object and owner!

## TICKET RETURNS

If you find you can't attend a performance, please contact the Ticket Office in advance, preferably by 6pm the day before the performance (kran-tix@illinois.edu or 217.333.6280). We never charge a handling fee on ticket transactions.

## SERVICES

Krannert Center for the Performing Arts is committed to making experiences accessible for all patrons, and we are delighted to provide a number of services to assist you. Krannert Center is equipped with an assisted listening system, wheelchair-accessible and no-step/few-step seating, and large-print programs, Braille programs, and American Sign Language interpreters are available with three weeks' advance notice.

For assistance regarding your visit, please email:

Para ayuda en relación con su visita, favor de enviar un email a:

Pour vous aider dans votre visite, prière de nous envoyer un courriel à:

欢迎! 如若您对您的造访需要帮助, 请发送电子邮件至:

स्वागत है! अगर आपको अपने रहने के लिए मदद चाहिए, ईमेल कीजिए:

환영합니다! 방문에 관해 도움이 필요하실 때에는 ...  
에게 이메일로 문의하시기 바랍니다:

**PATRONSERVICES@KRANNERTCENTER.ILLINOIS.EDU**  
**217.333.9716**