

PHOTO BY J SOHN



**PILOBOLUS: *BIG FIVE-OH!***

Tuesday, September 13, 2022, at 7:30pm

Tryon Festival Theatre

---

# PROGRAM

## PILOBOLUS: *BIG FIVE-OH!*

### EXECUTIVE DIRECTOR

Renée Jaworski

### ARTISTIC DIRECTORS

Renée Jaworski  
Matt Kent

### DANCERS

Nathaniel Buchsbaum  
Quincy Ellis  
Marlon Feliz  
Hannah Klinkman  
Paul Liu  
Zachary Weis

### DANCE CAPTAINS

Nathaniel Buchsbaum  
Quincy Ellis

### GENERAL MANAGERS

Anna Bate  
Kirsten Leon

### SENIOR ADVISOR

Richard Bell

### DIRECTOR OF EDUCATION

Emily Kent

### DEVELOPMENT ASSOCIATE

Christine Harris

### ADMINISTRATIVE COORDINATOR

Christine Harris

### STAGE MANAGER

Danielle Devito

### LIGHTING SUPERVISOR

Yannick Godts

### DECK MANAGER

Maxwell Jabara



Major support for Pilobolus Artistic Programming provided by the National Endowment for the Arts, which believes that a great nation deserves great art, and by The Shubert Foundation.

Pilobolus appears by arrangement with:  
IMG Artists, 1.212.994.3500, [imgartists.com](http://imgartists.com)  
General Inquiries: +1.860.868.0538 · [info@pilobolus.org](mailto:info@pilobolus.org)  
Tour Marketing and Publicity: C Major Marketing, Inc.

[@pilobolus](https://www.instagram.com/pilobolus) [f/pilobolusdance](https://www.facebook.com/pilobolusdance)

[PILOBOLUS.ORG](http://PILOBOLUS.ORG)



Keep in contact and receive exclusive discounts by scanning QR code.

## **UNTITLED** (1975)

Choreographed by Robby Barnett, Alison Chase, Martha Clarke, Moses Pendleton, Michael Tracy, and Jonathan Wolken

Performed by: Nathaniel Buchsbaum, Quincy Ellis, Marlon Feliz, Hannah Klinkman, Paul Liu, and Zack Weiss

Music: Robert Dennis

Costumes: Kitty Daly and Malcolm McCormick

Lighting: Neil Peter Jampolis

Commission from ADF at Connecticut College  
"Project Music and Dance"

## **BEHIND THE SHADOWS** (2021)

Created by Renée Jaworski and Matt Kent in collaboration with Nathaniel Buchsbaum, Quincy Ellis, Marlon Feliz, Hannah Klinkman, Paul Liu, and Zack Weiss

Performed by Nathaniel Buchsbaum, Quincy Ellis, Marlon Feliz, Hannah Klinkman, Paul Liu, and Zack Weiss

Music: David Poe

Lighting: Yannick Godts

*Behind the Shadows* is inspired by work from *Shadowland* (2009), and the contributions of Steve Banks, David Poe, Robby Barnett, Renée Jaworski, Matt Kent, Michael Tracy, Neil Peter Jampolis, Neil Patel, Liz Prince, and the original cast of *Shadowland*.

## **ON THE NATURE OF THINGS** (2014)

Created by Robby Barnett, Renée Jaworski, Matt Kent, and Itamar Kubovy in collaboration with Shawn Fitzgerald Ahern, Benjamin Coalter, Matt Del Rosario, Eriko Jimbo, Jordan Kriston, Jun Kuribayashi, Derion Loman, Nile Russell, and Mike Tyus

Performed by Nathaniel Buchsbaum, Quincy Ellis, and Marlon Feliz OR Hannah Klinkman, Paul Liu, and Zack Weiss

Music: Vivaldi; Michelle DiBucci and Edward Bilous

Mezzo Soprano: Clare McNamara

Violin Solo: Krystof Witek

Lighting and Set Design: Neil Peter Jampolis

*On The Nature Of Things* was commissioned by The Dau Family Foundation in honor of Elizabeth Hoffman and David Mechlin; Treacy and Darcy Beyer; The American Dance Festival with support from the SHS Foundation and the Charles L. and Stephanie Reinhart Fund; and the National Endowment for the Arts.

*20-minute intermission*

## **THE BALLAD** (2022)

Created by Darlene Kascak, Renée Jaworski, and Matt Kent in collaboration with Eryn Barnes, Nathaniel Buchsbaum, Quincy Ellis, Marlon Feliz, Hannah Klinkman, Paul Liu, and Zack Weiss  
Performed by Nathaniel Buchsbaum, Marlon Feliz, Hannah Klinkman, Paul Liu, and Zack Weiss

Storytelling: Darlene Kascak of the Schaghticoke Tribal Nation

Soundscape: Ben Sollee

Costumes: Valerie St. Pierre Smith

Lighting: Brian Tovar

Props: Yannick Godts

*The Ballad* is commissioned by the American Dance Festival with support from the Doris Duke/SHS Foundations Award for New Works. Additional support provided by the Institute of American Indian Studies and The Ballet Foundation.

## **BRANCHES** (2017)

Created by Renée Jaworski and Matt Kent in collaboration with Itamar Kubovy, Mark Fucik and Antoine Banks-Sullivan, Nathaniel Buchsbaum, Krystal Butler, Isabella Diaz, Heather Jean Favretto, and Jacob Michael Warren  
Performed by Nathaniel Buchsbaum, Quincy Ellis, Marlon Feliz, Hannah Klinkman, Paul Liu, and Zack Weiss

Music: David Van Tieghem, David Darling, Riley Lee, Olivier Messiaen, Stuart Bogie

Sound Design: David Van Tieghem

Costume Design: Liz Prince

Lighting Design: Thom Weaver

*Branches* premiered at Jacob's Pillow Dance Festival Inside/Out Series, June 21, 2017, and was commissioned by Jacobs Pillow Dance Festival and the National Endowment for the Arts, which believes a great nation deserves great art.

## THANK YOU FOR SPONSORING THIS PERFORMANCE

With deep gratitude, Krannert Center thanks all 2022–23 Patron Sponsors and Corporate and Community Sponsors, and all those who have invested in Krannert Center. Please view their names later in this program and join us in thanking them for their support.

This event is supported by:



### CECILE & IRA LEBENSON

Twenty-Five Previous Sponsorships  
Two Current Sponsorships



**BodyWork**  
A s s o c i a t e s

**CORPORATE & COMMUNITY  
BRONZE SPONSOR**

---

# PROGRAM NOTES

## ABOUT PILOBOLUS

Since 1971, Pilobolus has tested the limits of human physicality to explore the beauty and power of connected bodies. During the COVID-19 pandemic, Pilobolus has drawn on these decades of experience in telling stories with the human form to reach audiences in new ways, from our physically-distanced Roving Art Safari to digital performances and classes. Today, Pilobolus is thrilled to return to the proscenium stage, for its 50th Anniversary, performing works that span our half century.

This innovative dance company has created and toured over 120 pieces of repertory to more than 65 countries, and collaborated with more than 75 organizations in finance, retail, media, fashion, sports, and more to create bespoke performances for television, film, and live events. Learn more at [pilobolus.org](http://pilobolus.org).

---

# PROFILES

**RENÉE JAWORSKI** (co-artistic director) has had an extensive creative career working with Pilobolus since 2000, and in 2011 was honored to have been chosen by the founding Artistic Directors to lead Pilobolus into and beyond its post succession evolution. She served as choreographer and creator for exciting projects and collaborations for stage, film and video such as the 79th Annual Academy Awards, the Grammy® nominated video for OKGo's *All is Not Lost*, *Radiolab Live: In the Dark*, *World Science Festival*; *Time and the Creative Cosmos* and works with myriad outside artists through the International Collaborators Project, as well as overseeing the daily functioning and long term planning for the company's creative endeavors. As a teacher, she facilitates workshops and group projects in diverse communities with dancers and non-dancers alike. In 2010, her alma mater honored her with the University of the Arts Silver Star Alumni Award for her work as an artist in the field of dance. She has performed and toured the world with Momix and Carolyn Dorfman Dance Company. Renée lives in Connecticut with her husband and a menagerie of animals.

**MATT KENT** (co-artistic director) began his career with Pilobolus as a dancer in 1996, helping create many pieces, including classics like *Gnomon* and *Selection*, a collaboration with Maurice Sendak. In 2011, Matt was chosen by the founding Artistic Directors to lead Pilobolus in its post succession evolution. He has directed for the stage and screen choreographing on horses, Chinese acrobats, giant Michael Curry puppets, zombies on the *The Walking Dead*, jugglers, break dancers, actors, LED umbrellas and dancers. He was nominated for Best

Choreography by the L.A. Drama Critics Circle for *The Tempest* directed by Aaron Posner and Teller. Matt loves exploring and executing the ever-evolving work of Pilobolus as it reaches out to an expanding group of artists, audiences, and populations in ever unexpected ways.

**NATHANIEL BUCHSBAUM** (dance captain) Manipulator of Light and Shadow, Harnesser of Momentum, Shepherd of Saccharomyces, Student of the Ephemeral, Walker of the Prime Material plane. When he isn't wandering the lands, delighting both young and old with his nimble, scantily-clad acts of physical storytelling, he dwells in West Virginia where he brews craft beer at Morgantown Brewing Company. Nathaniel was absorbed into Pilobolus in 2012.

**QUINCY ELLIS** (dance captain) began training as a gymnast and figure skater in Maine before earning an acting degree from Emerson College. He has been performing and teaching for the past ten years with companies such as The MoveShop, DeFunes Dance, and Theatre Raleigh. Outside of traditional theatre, Quincy also dances for a variety of NYC Drag Artists, including Juicy Liu and Miz Cracker. Quincy joined Pilobolus in 2017 and does not dye his hair grey . . . it grows that way.

**MARLON FELIZ** (dancer) has danced with Pilobolus since 2014, touring *Shadowland* productions around the world, and now presenting repertory and artistic programming wherever possible. Additional credits include a Broadway debut in the new *West Side Story*, and other musicals, cruise ships, and NYC-based companies. She received her foundational training in ballet and modern dance at New World School

of the Arts, and completed her BFA in dance at NYU's Tisch School of the Arts. She is originally from Miami, Florida.

**HANNAH KLINKMAN** (dancer) was born and raised in Dexter, Michigan where she was classically trained at Ballet Chelsea. She studied at Grand Valley State University and completed her training with BalletMet Columbus in 2016. She has since danced and created with Festival Ballet Providence, Dance The Yard, Rhode Island Women's Choreography Project, and Momix, collaborating on her own choreographic projects when not traveling. Hannah is a Mindfulness Meditation teacher, Pilates instructor, dance teacher, and houseplant enthusiast. Hannah joined Pilobolus in 2021.

**PAUL LIU** (dancer) grew up in New Jersey training in traditional Chinese dance and acrobatics as well as breaking. He has studied with the Nai-Ni Chen Youth Dance Company, the Academy of Dance Arts New Jersey, the Central Academy of Drama in Beijing, and the Boston Conservatory. He has worked with Avary Gerhardt, Fukudance, and Hybridmotion Dance Theatre. He is almost always upside down doing floorwork except when cooking, skating, or getting tattoos. Paul joined Pilobolus in 2019.

**ZACHARY WEISS** (dancer) grew up in Chapel Hill, North Carolina and began his formal dance training at age eight. He has always been a performer whether it be playing the saxophone, singing, acting or dancing. Zack studied contemporary dance at UNC School of the Arts for a year before transferring to Swarthmore College. He graduated in 2020 with a major in engineering and a minor in dance. After working as a data engineer in Washington, DC for a year, Zack joined Pilobolus in 2021. Outside the studio, Zack can be found riding/fixing bikes, finding high places to climb, and reading science fiction (but

not all at the same time).

**ROBBY BARNETT** (co-founder, choreographer) was born and raised in the Adirondack Mountains and attended Dartmouth College. He joined Pilobolus in 1971.

**ALISON CHASE** (co-founder, choreographer) is a choreographer, director, master teacher, and theatrical artist. Her work explores emotional terrain through innovative movement, multidimensional storytelling, fusions of film and dance, and site-specific works. During her three decades with Pilobolus, she built an eclectic repertoire of choreography with unorthodox partnering and aerial techniques. Alison founded Alison Chase/Performance in 2009 to pursue her creative vision in bold collaborations. She has commissions from Wolf Trap, La Scala Opera, the Rockettes, and the Fête de l'Humanité, among others.

**MARTHA CLARKE** (co-founder, choreographer) is a founding member of Pilobolus and Crowsnest, noted for her multidisciplinary approach to theater, dance, and opera. She has choreographed for Nederlands Dans Theater, La Scala Ballet, the Martha Graham company, and is a resident artist for Signature Theatre, with works including *Garden of Earthly Delights*, *Chéri*, and *Angel Reapers*. Awards include a MacArthur fellowship, Drama Desk Award, two Obies, the Scripps/ADF Award for Lifetime Achievement, and two Lortels.

**MOSES PENDLETON** (co-founder, choreographer) has been one of America's most innovative and widely-performed choreographers for almost 50 years. A co-founder of the groundbreaking Pilobolus in 1971, he formed his own company, MOMIX, in 1980, which rapidly established an international reputation for inventive and illusionistic choreography. Mr.



Pendleton has also worked extensively in film, TV, and opera, and as a choreographer for ballet companies and special events, including two Winter Olympics.

**MICHAEL TRACY** (co-founder, choreographer) was born in Florence and raised in New England. He met the other Pilobolus founders at Dartmouth in 1969, and became an artistic director after graduating magna cum laude in 1973. Michael toured with Pilobolus for 14 years and choreographed and directed the company until his retirement. He has set his work on the Joffrey, Ohio, Hartford, Nancy, and Verona Ballets, and with Pilobolus choreographed a production of Mozart's *Magic Flute*. Michael taught at Yale University for two decades and lives in northwestern Connecticut.

**JONATHAN WOLKEN** (1949–2010) (co-founder, choreographer) co-founded Pilobolus and remained an artistic director until his death, creating 46 Pilobolus works in collaboration with co-artistic directors and guest artists, and as sole choreographer. He also choreographed Glyndebourne Festival Opera's production of Maurice Sendak's *Where the Wild Things Are*, and the Royal Danish Ballet's *Oneiric*. Mr. Wolken taught many workshops and was dedicated to the furtherance of Pilobolus technique in dance and as a model for creative thinking.

**DARLENE KASCAK** (collaborator), Schaghticoke Tribal Nation, is education director and traditional Native American storyteller of the Institute of American Indian Studies in Washington, Connecticut. Darlene's experience as an educator, tour guide, museum assistant and traditional Native American storyteller has taught her the importance of educating both young and old about the many misconceptions and stereotypes about her ancestors. Her style of teaching from a Native American's point of

view allows children and adults the opportunity to have a new understanding of Connecticut's Indigenous Peoples lives both in the past and in the present.

**NEIL PETER JAMPOLIS** (1943–2019) (lighting designer) designed for Pilobolus since 1975, spanning 40 years and creating more than 60 new works for the company. He also had a 50-year active career as a set, lighting and costume designer for Broadway—where he received four Tony nominations and a Tony award—and for Off-Broadway, dance, regional theater, and opera, which he also directed. His designs appeared on every continent. Neil was a distinguished professor of theater at UCLA.

**BRIAN TOVAR** (lighting designer) is an award-winning and Drama Desk nominated lighting designer who has created original work for major Off-Broadway and regional theaters, everywhere. His body of work spans theater, dance, installations and live events. As a creative director and producer, Brian has developed and collaborated on multiple groundbreaking and award-winning live experiences, earning multiple Clio Awards. Brian is a frequent collaborator with the City of New York and has created and designed multiple art installations in New York City. [BrianTovarDesign.com](http://BrianTovarDesign.com)

**THOM WEAVER** (lighting designer) studied at Carnegie-Mellon and Yale and first worked with Pilobolus on Teller and Aaron Posner's *The Tempest* at Chicago Shakespeare Theatre. In New York, his work has been seen at NYSF/ Public Theatre, Primary Stages, Signature Theatre, Player's Theatre (*Play Dead* with Teller), 37ARTS, Cherry Lane, Lincoln Center Festival, Lincoln Center Institute, and SPF. Thom has worked regionally at CenterStage, Syracuse Stage, Huntington, Milwaukee Rep, Shakespeare Theatre, Asolo, Berkshire Theatre Festival,

Williamstown, Folger Theatre, Roundhouse Theatre, Cincinnati Playhouse, Hangar, Spoleto Festival USA, City Theatre, Pittsburgh Public Theatre, and Yale Rep. Thom has received three Barrymore Awards (21 nominations), four Helen Hayes nominations, and two AUDELCO Awards.

**KITTY DALY** (costume designer) created costumes for Pilobolus's *Molly's Not Dead*, *The Detail of Phoebe Strickland*, *Bonsai*, *The Empty Sutor*, *Moonblind*, *Lost in Fauna*, *Mirage*, *What Grows in Huygen's Window*, *Stabat Mater*, and *Elegy for the Moment*. She has designed for the Ohio Ballet, the Pennsylvania Ballet, the Milwaukee Ballet, Merce Cunningham, Crowsnest, and Parker/Pucci. Ms. Daly lives in northern Vermont, creating custom evening gowns and beautiful tracks in the snow.

**LIZ PRINCE** (costume designer) designs costumes for dance, theater, and film, and has designed costumes for numerous Pilobolus productions. Her costumes have been exhibited at the Cleveland Center for Contemporary Art, The New York Public Library for the Performing Arts, Snug Harbor Cultural Center, Rockland Center for the Arts, and the 2011 Prague Quadrennial. She received a 1990 New York Dance and Performance Award (BESSIE) for costume design as well as a 2008 Charles Flint Kellogg Award in Arts and Letters from Bard College.

**VALERIE ST. PIERRE SMITH** (costume designer), White Earth Ojibwe-kwe, mischief-maker, scholar, and author, has an eclectic design background including stage, fashion, dance, film, opera, and themed entertainment. Her designs have been seen at The Kennedy Center, Woolly Mammoth Theatre, Mixed Blood Theatre, Sea World: San Diego, the National Museum of the American Indian and more. Valerie's scholarly work on cultural appropriation, inspiration, and representation in design has her presenting for a

variety of institutions and conferences, including Central Saint-Martins Fashion Programme in London, England, and writing for a variety of publications.


**DANIELLE DEVITO** (stage manager) grew up just outside of New York City and was introduced to the production side of the performing arts at her high school's performing arts curriculum program, PACE. She studied at The American University in Washington, DC majoring in both film and dance production and graduating in 2020. Danielle has worked at the American Dance Festival and with dance and theater companies including Dorrance Dance, One Year Lease Theater, and Passion Fruit Dance Company. She also works for the Broadway Education Alliance, putting together kids' ensemble programs at locations such as Carnegie Hall and the Macy's Thanksgiving Day Parade.

**YANNICK GODTS** (lighting supervisor) started with Pilobolus in 2013 as a production intern and has been with the company ever since. In 2014, he joined the staff of *Shadowland* and has been to four continents with the show since then. When not on the road or in the Pilobolus studio, he lives in Washington, DC and works as a visual artist, graphic designer, and lighting and scenic designer at large. He thanks his family for their encouragement and friends for putting up with the fact that he's never home.

**MAXWELL JABARA** (deck manager) hails from southeastern Michigan and went on to study technical theatre at Kent State University in Ohio. Just out of college, Max worked with Pilobolus as a production intern and recently, he worked as a prop hand for the Blue Man Group. He's very excited to be back on tour with Pilobolus!

SA OCT 1 AT 7:30PM

WHY NOT THEATRE:  
**PRINCE  
HAMLET**

 krannert center

---

## **Land Acknowledgement**

The University of Illinois System carries out its mission in its namesake state, which includes the traditional territory of the Peoria, Kaskaskia, Piankashaw, Wea, Miami, Mascoutin, Odawa, Sauk, Mesquaki, Kickapoo, Potawatomi, Ojibwe, Menominee, Ho-Chunk, and Chickasaw Nations. These lands continue to carry the stories of these Nations and their struggles for survival and identity.

As a land-grant institution, the University of Illinois has a particular responsibility to acknowledge the peoples of these lands, as well as the histories of dispossession that have allowed for the growth of this institution for the past 150 years. We are also obligated to reflect on and actively address these histories and the role that this university has played in shaping them. This acknowledgement and the centering of Native peoples is a start as we move forward for the next 150 years.

Krannert Center affirms the commitment by the university to move beyond these statements, toward building deeper relationships and taking actions that uphold and preserve Indigenous rights and cultural equity.

As we gather to experience this performance, we have an opportunity to reflect on the ways that systems of oppression have shaped our society. We can work together to create systems that support human dignity, establish equity, strengthen cross-cultural relationships, and draw upon the creative capacity of all people that make up this community, state, nation, and world.



# DINING

Our lobby services are open day and evening to serve you:



**intermezzo cafe**

SUSTAINABLE SPECIALS +  
EVERYDAY INDULGENCES

**STAGE5BAR**

SMOOTH SELECTIONS +  
ARTISANAL APPETIZERS

## WHY WAIT?

Order before you head into the theatre, and we'll have your food and beverages waiting for you at intermission or after the show.



# INVEST IN THE FUTURE OF THE ARTS

Support Krannert Center today



---

### **Connecting People, Creating Happiness**

Krannert Center is committed to providing programs that inspire, engage, challenge, and revitalize. The support of our donors and friends enables the Center to bring in diverse international artists and launch transformative initiatives that foster inclusivity and bring about dynamic change.

**Every contribution counts. Together, we can effect powerful change that will impact generations to come.**

Please consider making a gift to Krannert Center today. Together, we can strengthen the lasting impact of the Center's work, while ensuring that students and the greater community have access to enriching performances and cultural experiences.

Join us as we invest in the future of the arts.

### **Make Your Gift Today**

advancement@krannertcenter.illinois.edu • 217.333.6700  
KrannertCenter.com/Give

### **Would you like to make Krannert Center part of your legacy?**

Contact Cheryl Snyder (217.333.2533 | [casnyder@illinois.edu](mailto:casnyder@illinois.edu))  
or Bethany Whoric (217.300.6042 | [bbwhoric@illinois.edu](mailto:bbwhoric@illinois.edu)) to learn more  
about making a planned gift to Krannert Center for the Performing Arts.

---

---

# KRANNERT CENTER PHILANTHROPY AND ADVOCACY

Krannert Center's dedication to the celebration, exploration, and cross-pollination of the arts is advanced through these special programs. Donors who champion such work make it possible for more people in our community to participate in life-affirming experiences.

## 2022-2023 ADVANCEMENT COUNCIL

This passionate group of arts advocates assists Krannert Center staff in expanding the Center's leadership and financial resources.

### Co-Chairs:

Janet & Douglas Nelson  
Ghazala Ahmad  
Terry & Barbara England  
Michelle Gonzales  
Susan & Michael Haney  
Lisa & Mark Klingler

Leonard (Len) Lewicki  
Marina & Nenad Marjanovic  
Susan & Brendan McGinty  
Tracy Parsons  
Susan & Sam Reese

## 2022-2023 KRANNERT CENTER YOUTH SERIES

The Youth Series features daytime performances, online media created by performing artists, and educational activities designed especially for pre-K through high-school-aged students. Children who participate learn to appreciate the performing arts, gain knowledge, build social skills, and integrate live performance experiences into classroom work. Thank you to our Youth Series sponsors. If you'd like to learn how you can become a sponsor for the Krannert Center Youth Series, please contact Krannert Center Advancement at 217.333.6700 or [advancement@krannertcenter.illinois.edu](mailto:advancement@krannertcenter.illinois.edu).

Bernard and Prudence Spodek  
Endowed Fund

Ann H. Bender Youth Series  
Endowment

The Susan Sargeant McDonald  
Endowed Fund for Youth  
Programming (Suzi was  
the founder/developer  
of the Krannert Center  
Youth Series)

Susan & Michael Haney  
Robert & Mary-Alayne Hughes

Jane & Christian Scherer  
Brenda & Stephen Pacey  
Jill & James Quisenberry  
Carol & Ed Scharlau  
Anne & David Sharpe  
Audrey Ishii & Charlie Smyth  
The Rotary Club of Champaign  
Illinois Arts Council  
National Endowment  
for the Arts

## 2022-2023 CAMPAIGN FOR YOUNG AUDIENCES

Through the Campaign for Young Audiences, students at the U of I enjoy \$10 tickets for nearly every event presented at Krannert Center while other college students and children receive significant discounts. If you'd like to learn how you can become a sponsor, please contact Krannert Center Advancement at 217.333.6700 or [advancement@krannertcenter.illinois.edu](mailto:advancement@krannertcenter.illinois.edu).

## Lead Sponsors



Phyllis Robeson & Family

## Sponsors

Susan & Michael Haney Fund  
for Young Audiences  
Gertrude Brokaw McCloy  
Endowment  
Clarette & Zvi Ritz

Jennifer & Tom Dillavou  
Anke & Paul Tucker  
UpClose Marketing  
and Printing



## KRANNERT SOCIETY

The University of Illinois, the College of Fine and Applied Arts, and Krannert Center are profoundly grateful for the commitment of Krannert Society members. Through donations, pledges, and residual gifts of \$1 million or more, these open-hearted visionaries help build a thriving community and encourage cross-cultural understanding. Their support sustains the extraordinary vision of Herman and Ellnora Krannert to create a vibrant gathering place like no other.



**VALENTINE JOBST III** (1904-1993)  
March 1994



**CLAIR MAE ARENDS** (1912-2000)  
**G. WILLIAM ARENDS** (1914-1997)  
March 2000



**MARILYN PFLEDERER ZIMMERMAN**  
(1929-1995)  
**VERNON K. ZIMMERMAN**  
(1928-1996)  
November 2003



**HELEN FARMER**  
**JAMES FARMER** (1931-2020)  
April 2014

## FOELLINGER SOCIETY

Demonstrating their steadfast dedication to the arts, members of the Foellinger Society have donated or pledged \$500,000 to \$999,999. Because of their generosity, everyone in this community can unite in joyful and engaging experiences. These magnanimous arts lovers celebrate the spirit of Helene Foellinger, whose memorial gift honored her sister, Loretta Foellinger Teeple, and established the Marquee Performance Endowment.



AVIS HILFINGER (1915-2004)  
DEAN HILFINGER (1912-2006)  
April 2000



KENNETH ANDERSEN (1933-2020)  
MARY ANDERSEN  
August 2009



CAROLYN G. BURRELL  
April 2012



CAROLE & JERRY RINGER  
April 2014



**EDITH ANN STOTLER**  
August 2017



**K. SARAH SPAULDING**  
(1930–2022)  
Feb 2017



**JANE BUFORD SCHERER & CHRIS  
SCHERER**  
June 2022



**DENA & JIM VERMETTE**  
June 2022

## **IKENBERRY SOCIETY**

University of Illinois President Emeritus and First Lady Stan and Judy Ikenberry have long demonstrated their love for the arts and their deep commitment to enhancing learning experiences for all University of Illinois students. Krannert Center gratefully acknowledges their steadfast support by introducing the Ikenberry Society to recognize donated gifts or pledges of \$250,000 to \$499,999.



**JUDITH & STANLEY IKENBERRY**  
September 2014



**JERALD WRAY & DIRK MOL**  
March 2016



**DAVID A. KROOKS**  
August 2016



**HELEN & DANIEL RICHARDS**  
June 2016



**HOLLY & KURT HIRCHERT**  
February 2017



**ANONYMOUS**  
May 2018



**JOAN & PETER HOOD**  
November 2018



**SUSAN & MICHAEL HANEY**  
April 2019



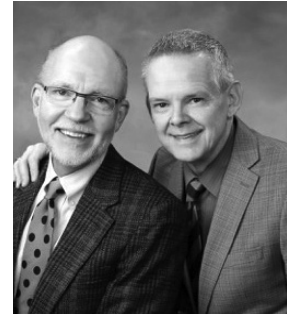
**LYNN WEISEL WACHTEL  
& IRA WACHTEL**  
June 2019



**JOHN & KAY SHANER**  
July 2019



**LEONARD (LEN) LEWICKI**  
May 2021



**JERRY A. CARDEN & TIMOTHY  
W. TEMPLE**  
June 2022



**FRAN & MARC ANSEL**  
June 2022

## COLWELL SOCIETY

Dr. John B. Colwell, Pauline Groves Colwell, and R. Forrest Colwell provided critical funding for the Marquee Performance Endowment, and the Colwell Society gratefully acknowledges their invaluable assistance. Members have donated or pledged \$100,000 to \$249,999 for celebrating, preserving, and exploring the arts right here and around the globe.



**DOLORIS DWYER**  
(1918-1997)  
April 1996



**EMILY GILLESPIE**  
(1909-2000)  
**JAMES GILLESPIE**  
(1905-1999)  
December 1996



**ROSANN NOEL**  
(1932-2018)  
**RICHARD NOEL**  
April 1997



**JAMES W. ARMSEY**  
(1917-2008)  
**BETH L. ARMSEY**  
(1918-2019)  
February 1998



**LOIS KENT**  
(1912-1999)  
**LOUIS KENT**  
(1914-1994)  
October 2000



**JUNE SEITZINGER**  
(1928-2020)  
**GROVER SEITZINGER**  
(1925-2019)  
September 2001



**RICHARD MERRITT**  
(1933-2005)  
**ANNA MERRITT**  
November 2006



**JOHN PFEFFER**  
(1935-2017)  
**ALICE PFEFFER**  
November 2006



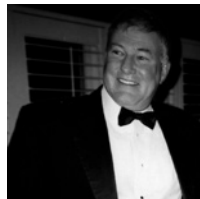
**ANONYMOUS**  
November 2006



**LINDA M. MILLS**  
(1940-2006)  
October 2007



**JUDITH & JON  
LIEBMAN**  
January 2008



**MICHAEL  
CARRAGHER**  
(1946-2009)  
September 2008

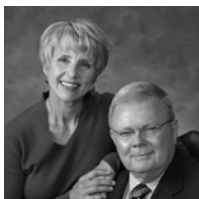


**VIRGINIA R. IVENS**  
(1922-2008)  
February 2009

**THE SUSAN  
SARGEANT  
MCDONALD  
ENDOWED FUND  
FOR YOUTH  
PROGRAMMING**  
Suzi was the founder/  
developer of the  
Krannert Center Youth  
Series  
July 2010



**MISAHO &  
RICHARD BERLIN**  
October 2010



**DIANA & WARD  
MCDONALD**  
March 2011



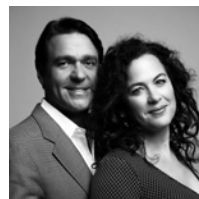
**GRACE & JOHN  
MICETICH**  
March 2011



**JO ANN TRISLER**  
(1946-2010)  
November 2011



**LEA GIESELMAN**  
(1932-2014)  
**BOB GIESELMAN**  
(1932-2015)  
April 2013



**JULIE & NATHAN  
GUNN**  
April 2014



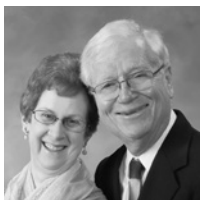
**MICHAEL SWINDLE**  
April 2014



**ANONYMOUS**  
November 2015



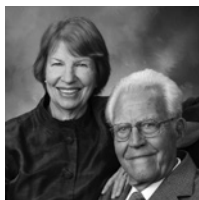
**LINDA WEINER**  
(1944-2021)  
**BARRY WEINER**  
February 2017



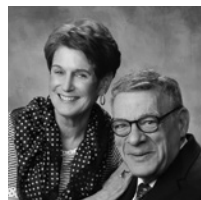
**ANNE MISCHAKOFF  
HEILES & WILLIAM  
HEILES**  
May 2017



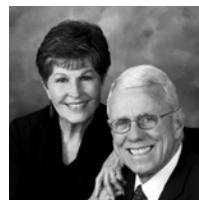
**JILL & JAMES  
QUISENBERRY**  
May 2017



**DALE STEFFENSEN**  
(1922-2018)  
**MARGARET  
STEFFENSEN**  
June 2017



**CECILE & IRA  
LEBENSON**  
December 2017



**BURT SWANSON**  
(1939-2020)  
**IRIS SWANSON**  
December 2017



**TERRY & BARBARA  
ENGLAND**  
April 2018



**PHYLLIS ROBESON  
& FAMILY**  
February 2019  
**KYLE ROBESON**  
(1929-2021)



**JAMES R. FRAME  
& CANDACE PENN  
FRAME**

April 2019



**MICHAEL &  
MARGARET ROSSO  
GROSSMAN**

July 2019



**PATRICIA & ALLAN  
TUCHMAN**

April 2021



**VICTOR FELDMAN  
(1935-2018)  
JUDITH FELDMAN**

(1938-2021)  
September 2021



**SUSAN & RICHARD  
SCHNUER**

November 2021



**JUDITH & RICHARD  
KAPLAN**

February 2022

---

*Donations by society members include estate gifts; outright donations; charitable gift annuities; charitable remainder trusts; gifts of real estate, insurance, and securities; and pledges fulfilled over a period of five years. To explore how you can create your own lasting legacy, contact us at 217.333.6700 or [advancement@krannertcenter.illinois.edu](mailto:advancement@krannertcenter.illinois.edu).*



## 2022-2023 MARQUEE CORPORATE & COMMUNITY SPONSORS

Corporate and community support—both cash and in-kind—deepens Krannert Center’s capacity to inspire public discourse, communal respect, and collective joy. Please join Krannert Center in thanking the following corporate and community sponsors for their support of Krannert Center performances and initiatives.

---

### Corporate & Community Platinum Sponsors (\$30,000 OR MORE)



---

**Corporate & Community Lead Gold Sponsors**

(\$20,000-\$29,999)



---

**Corporate & Community Gold Sponsors**

(\$10,000-\$19,999)



---

**TO JOIN THIS POWERFUL NETWORK** of like-minded professionals while receiving guaranteed visibility and marketing benefits, visit [KrannertCenter.com/Give](http://KrannertCenter.com/Give) or contact Bethany Whoric at 217.300.6042 or [bbwhoric@illinois.edu](mailto:bbwhoric@illinois.edu).

---

# 2022-2023 GRANTS



DORIS DUKE  
CHARITABLE FOUNDATION

## DORIS DUKE CHARITABLE FOUNDATION

Endowment support from the Doris Duke Charitable Foundation continues to enhance Krannert Center's presentation of diverse, world-class national and international visiting artistry; supporting the creation of new work; and increasing engagement and collaboration across campus.



## ILLINOIS ARTS COUNCIL

The Illinois Arts Council Agency provides general programming support to ensure that audiences of all ages have direct access to world-class theatre, dance, and music.

## FRANCES P. ROHLEN VISITING ARTISTS FUND/ COLLEGE OF FINE + APPLIED ARTS

This grant, a generous gift from the Rohlen Family.



THIS PROJECT FUNDED BY  
STUDENT SUSTAINABILITY COMMITTEE

## THE STUDENT SUSTAINABILITY COMMITTEE

The Student Sustainability Committee provided funding for the Krannert Center Audiences Lighting Retrofit Project, which continues to increase energy efficiency, decrease labor requirements, and improve safety conditions.



Center for  
Advanced  
Study

## GEORGE A. MILLER ENDOWMENT PROGRAMS COMMITTEE

The George A. Miller Endowment Programs Committee supports CultureTalk.

## THE AUGUSTINE FOUNDATION

### THE AUGUSTINE FOUNDATION

The Augustine Foundation provides continued major support for ELLNORA | The Guitar Festival.

## MARQUEE PATRON SPONSORS

Krannert Center is grateful for the passion and commitment of the following individuals whose gifts support the expansive range of experiences offered at Krannert Center: formative moments for tomorrow's global leaders, performances that comfort and transform, opportunities to create and enjoy groundbreaking work, engagement activities that offer self-discovery and hope, architectural treasures to delight the senses, and remarkable moments to foster lifelong memories. If you'd like to learn more about how to become a sponsor, please contact Krannert Center Advancement at 217.333.6700 or [advancement@krannertcenter.illinois.edu](mailto:advancement@krannertcenter.illinois.edu).

### Endowed Underwriters

(\$10,000 OR MORE PER EVENT)

Clair Mae & G. William Arends  
Terry & Barbara England  
Avis & Dean Hilfinger  
Judith & Stanley Ikenberry  
Valentine Jobst III  
Marilyn Pfleiderer & Vernon K. Zimmerman

---

### Endowed Sponsors

(\$5,000-\$9,999 PER EVENT)

Mary & Kenneth Andersen  
Doloris Dwyer  
Helen & James Farmer  
Lois & Louis Kent  
Carole & Jerry Ringer  
Bernard and Prudence Spodek Endowed Fund

---

### Endowed Co-sponsors

(\$2,500-\$4,999 PER EVENT)

Ann H. Bender Youth Series Endowment  
Victor & Judith Feldman  
Emily & James Gillespie  
Margaret Rosso Grossman & Michael Grossman  
Joan & Peter Hood  
Virginia R. Ivens  
Anna Merritt  
Mildred Maddox Rose  
The Susan Sargeant McDonald Endowed Fund for Youth  
Programming (Suzi was the founder/developer of the Krannert  
Center Youth Series)  
Kay & John Shaner  
Pat & Allan Tuchman

---

### Campaign for Young Audiences

Anonymous  
Jennifer & Tom Dillavou  
Susan & Michael Haney Fund for Young Audiences  
Gertrude Brokaw McCloy Endowment

Clarette & Zvi Ritz  
Phyllis Robeson & Family  
Anke & Paul Tucker  
UpClose Marketing and Printing

---

### Patron Underwriters

(\$10,000 OR MORE PER EVENT)

Anne Slichter

---

### Patron Sponsors

(\$5,000-\$9,999 PER EVENT)

Judith & Richard Kaplan  
Judith & Jon Liebman  
Iris & Burton Swanson

---

### Patron Co-sponsors

(\$2,500-\$4,999 PER EVENT)

Amy & Matthew Ando  
Jim Barrett  
Harriet & Herschel Cline  
Emmie Fisher  
Susan & Michael Haney  
Diane Gottheil  
Lisa & Mark Klinger  
Leonard (Len) Lewicki  
Ann & Stephen Long  
Gigi & Frank Miles  
Martha & Thom Moore  
Claudia Reich & Gary Olsen  
Brenda & Stephen Pacey  
Dr. Jan Marie Aramini & Michael Pettersen  
Carol & Franklin Shupp  
Mary Schuler & Stephen Sligar  
Masako Takayasu  
Pat & Allan Tuchman

---

**HELP ENSURE THE IMPACT OF THE ARTS** for future generations  
by becoming a donor today. Visit [KrannertCenter.com/Give](http://KrannertCenter.com/Give), contact  
us at 217.333.6700 or [advancement@krannertcenter.illinois.edu](mailto:advancement@krannertcenter.illinois.edu).

## MARQUEE CIRCLE AND LOOP MEMBERS

We gratefully acknowledge these individuals and businesses for their generosity and commitment to the arts. Their support enabled the Center to welcome back in-person audiences for Music, Theatre, Dance, and visiting artist productions this past season. Krannert Center continues make accessibility improvements, co-commission works to help support artist partners, and focus on engagement work within the community. If your membership has lapsed and you'd like to renew, please contact Krannert Center Advancement at 217.333.6700 or [advancement@krannertcenter.illinois.edu](mailto:advancement@krannertcenter.illinois.edu).

[LIST CURRENT AS OF AUGUST 26, 2022]



Ghazala Ahmad  
Melissa Huff & Richard Alkire\*  
Walter Alspaugh  
Nadja & Carl Altstetter  
Marlys Scarbrough & Chet Alwes  
Ruth & James Anderson  
Colleen Chon & Quintin Anderson  
Amy & Matthew Ando  
Frances & Marc Ansel\*  
Dianna Armstrong\*  
Judith Bach  
Barbara E. Barnes  
Tangül & Tamer Basar  
Diane A. Tasca & Norman Beamer  
Sherry & Nelson Beck  
Carol & Carl Belber  
Dorothy Bell  
Erica & Alessandro Bellina  
Carol Berthold  
Mary Blair  
Doug Blair  
Marsha Clinard & Charles Boast  
Abbie & Mike Broga  
Elizabeth & Michael Brunk  
Annette & John Buckmaster  
Joyce & Rabel Burdge  
Jayne & Richard Burkhardt Jr.  
Carolyn G. Burrell  
Ann & Roy Campbell  
Helen & Andreas Cangellaris  
Timothy Temple & Jerry Carden  
Nancy & Allen Carter  
Beth & David Chasco  
Kathleen & Felix Cimakasky  
Harriet & Herschel Cline

Carol & Willis Colburn  
Casey Sutherland & Linda Coleman  
Tina & John Colombo  
Jongin & Robert Craggs  
Janis Chadsey & Al Davis  
Deborah Day  
Elizabeth Cardman & Paul Debevec  
Richard DeLong  
Dixie & Evan Dickens\*  
Jennifer & Tom Dillavou  
Anastasia & James Economy  
Ann Einhorn  
Jo & Thomas Emerson  
Karen & Michael Folk  
Shari & Ben Fox  
Beverly & Michael Friese  
Michael Fuerst  
Nancy & Bert Fuller  
Victoria Christensen & Gary Gladding  
Melanie Loots & George Gollin\*  
Shirley Soo & Matthew Gorman  
Diane Gottheil  
Ondine & George Gross  
Julie & Nathan Gunn  
Susan & Michael Haney  
Sharon & Terence Harkness  
Ron Harshman  
Gözen & Chris Hartman\*  
Kathleen Harvey  
Clare & Alan Haussermann  
Jane Trishman Heaton  
Betsy Hendrick  
Jan & Bruce Hinely  
Ellen Hinterlong  
Holly & Kurt Hirschert  
Kathryn Rybka & Darrell Hoemann  
Photography  
Mary-Alayne & Robert Hughes  
Peggy & Christopher Huson  
Ingrid & Bruce Hutchings

Laura & Gale Jamison  
Nancy Johnson  
Ronald Johnson  
Joan Volkmann & John Jones  
Martha Ann Jones  
Patricia & James Jurgens  
Patricia & Peter Kale  
Marianne Kalinke  
Judith & Richard Kaplan  
Paula Kaufman  
Josephine & Douglas Kibbee  
Brenda & Peter Kimble  
Lisa & Mark Klingler  
Antje & Edward Kolodziej  
Wynne Sandra Korr  
Sheila & Philip Krein  
Marion & Herman Krier  
Nancy Parker & James Kuklinski  
Cecile & Ira Lebenson\*  
Brenda Lerner-Berg  
Emily Levin  
Diana Sheets & Stephen Levinson  
Leonard (Len) Lewicki  
Kun Jiang & Xuan Li  
Judith & Jon Liebman  
Ann & Stephen Long  
Kathryn & Stephen Marshak  
Leslie & Gary Mason  
Betsy Bachmann & Rebecca McBride  
Gertrude Brokaw McCloy Endowment  
Erica & Malcolm McClure  
Carolyn and Dale McElrath  
Susan & Brendan McGinty  
Mrs. Jack H. McKenzie  
Anna Merritt\*  
Theresa & Bruce Michelson  
Gigi & Frank Miles  
Elizabeth & George Miley  
Sallie & Norman Miller  
Jerald Wray & Dirk Mol\*

Martha & Thom Moore\*  
Jane & Walter Myers  
Janet & Douglas Nelson\*  
A. Mark Neuman  
Debra Lee & Ty Newell  
Peter Newman & Jermone Ng  
Claudia Reich & Gary Olsen\*  
Brenda & Stephen Pacey  
Jean Paley  
Donald Perrero  
Marjorie Perrino  
Carolyn & Todd Petersen  
Alice Pfeffer\*  
Kathleen A. Holden & David  
Prochaska  
Jill & James Quisenberry\*  
Gloria Rainer  
Arlene & Julian Rappaport  
Lois & Robert Resek\*  
Karen & Michael Retzer  
Helen & Daniel Richards\*  
Marlyn Rinehart  
Carole & Jerry Ringer\*  
Clarette Ritz  
Phyllis Robeson  
Lisa & Eric Robeson  
Taya & Mike Ross  
Christie Roszkowski  
Deborah & Brian Ruddell  
Deborah & Stephen Rugg\*  
Jane & John Santogrossi  
Shozo Sato  
Carol & Ed Scharlau\*  
Jane & Christian Scherer  
Susan & Richard Schnuer  
Kim Robeson-Schwenk & Dean  
Schwenk\*  
Kay & John Shaner  
Anne & David Sharpe  
Trent Shepard  
Janice Sherbert  
Jan & David Sholem  
Carol Shupp  
Patricia & Charles Simpson  
Brenda & Dale Slack  
Mary Schuler & Stephen Sligar  
Audrey Ishii & Charles Smyth  
Prudence Spodek  
Elaine & Case Sprenkle  
Cecile Steinberg  
Margaret Stillwell  
Edith Ann Stotler  
Patricia Plaut & Kenneth Suslick  
Iris & Burton Swanson\*  
Cynthia Swanson

Jason & Michelle Swearingen  
Bonnie & Bob Switzer  
Masako Takayasu\*  
Nancy & Edward Tepper  
Ray Timpone  
Marie Griffith Tompkins  
Joan & Walter Tousey  
Shirley & Arthur Traugott\*  
Devon Hague & Dallas Trinkle  
Pat & Allan Tuchman\*  
Anke & Paul Tucker  
Carl L. Vacketta  
Dena & Jim Vermette  
Stella & Max Volk  
Lynn Weisel Wachtel & Ira Wachtel  
Chip Walgren  
Joy Thornton-Walter  
Aimee & John Ward  
Paula Watson  
Barry Weiner  
Susan & Robert Welke  
Sarah Wigley  
Rebecca & Paul Wigley  
Karen & William Wilkinson  
Sarah & Charles Wisseman  
Patricia Cassidy & Andrew Wycislak  
Elaine & Harold Yoon  
Joan & Theodore Zernich

And gifts from four Anonymous  
donors

---

### Memorial Gifts to the Marquee Circle

James Economy  
Kun Jiang & Xuan Li  
Rosann Noel  
Matthew Noel  
George B. Perlstein  
Anonymous  
Amy A. Rappaport-Lo  
Arlene & Julian Rappaport  
Donald R. Sherbert  
Janice Sherbert & Family

---

\*Former member of the Krannert  
Center Advancement Council



Pat Januszki & Dick Adams  
Ellen & Gene Amberg  
Jane Archer  
Carol & Richard Arnould  
Charlotte Arnstein  
Grace Ashenfelter  
Susan & G. Tim Bachman  
Joseph Barnes  
Sandra & Ritchie Barnett  
Jim Barrett  
Jane & Peter Barry  
Rita Bartholomew  
Kathleen & S. Eugene Barton  
Ronald & Susan J. Bates  
Norma Bean  
Mary Beastall  
Susan & Wayne Bekiares  
Dorothy & James Bennett  
Kathleen & John Lansing Bennett\*  
Laura & Kenneth Berk  
Mary & Kenneth Beth  
Carol & Richard Betts  
Debra & Kenneth Bezan  
Sue Biddle  
Bruce Bonds  
Tamara Bouseman  
Hannah & Justin Brauer  
Amy Mueller & James Brennan  
Liora & Yoram Bresler  
Margaret & Donald Briskin  
William Brooks  
Channing Brown  
Donald Buss  
David Campbell  
Louise Walczak & Joseph Carey  
Sandra Carr  
Susan Hinrichs & Alan Carroll  
Donna & Steven Carter  
Sandra Casserly  
Elaine Bearden & Craig Chamberlain  
Alexander Chang  
Chen Chen  
Matthew Chen  
Eileen & Dennis Coleman  
Deborah Cook  
Janet & William Coombe  
Nancy & Fred Coombs  
Ruth Cortright

Kathleen Vance & Charles Cowger  
Nancy Creason  
Sandra & Luis Cuza  
Elizabeth & Robert Czyn  
Millie Davis  
Susan Meinkoth & Peter Davis\*  
Lucia & Ron Deering  
Nancy & Harold Diamond  
Terri Dodson  
Jean Driscoll  
John & Astrid Dussinger  
Ellen & Douglas Elrick  
Rhoda Engel  
E. R. Ensrud  
Sharol & Victor Escobar  
Jane Mohraz & A. Belden Fields  
Kim & Allan File  
Sandy & Joe Finnerty  
Rebecca Netti-Fiol & Stephen Fiol  
Sue Anne & Don Fischer  
Catherine Flood  
Kristin & James Flores  
Rose Marie & Brendan Foley  
Barbara Ford  
Tracey Ford  
Priscilla & Andrew Fortier  
Claudia & Eduardo Fradkin  
Natalie Frankenberg  
Karen & Alain Fresco  
Richard Furr  
Pamela & Samuel Furrer  
Janet Kalmar & Benjamin Galewsky  
Laurie Rund & Rex Gaskins  
Evelyn & Joseph Gill  
Derek Girtton  
Brian Gonner  
Nancy Goodall  
Karen Grano  
Susan & Lewis Greenstein  
Karl Greve  
Judith & Michael Griffin  
Phyllis Gron  
Kimiko Gunji  
Lila Sullivan & Don Gunning  
Karen Greenwalt & David Hamilton  
K.S. & Torin Hannan  
Karen & David Harris  
Cynthia Capek & Edward Harvey  
Jenny & Dick Harvey  
Susan Bonner & Dena Hasselbring  
Dauna Hayman  
Christine & Bruce Hegemann  
John Heiligenstein  
Marne Helgesen  
Deloris & Grant Henry  
Susan & Edwin Herricks  
Herbert Hiestand  
Shawna Scherer & Steve Higgins

Bonnie & Steven Hill  
Paul Hinson  
Jennifer & Paul Hixson  
Zarina & Hans Hock  
Laurie & Robert Hodrick  
Kay Hodson  
Judith Hoffman  
Marilee & Robert Hoffswell  
Jean Holley  
Edit & Leland Holloway  
Jessie Houston  
Laura Keller & Robert Hurst  
Michael Lambert & Timothy Hutchin-  
son  
Janice Impey  
Andrew Ingram  
Margaret Inman  
Dixie & Gary Jackson  
Elizabeth & Henry Jackson  
Meghan & Cyril Jacquot  
Janet Elaine Guthrie & Mark Jaeger  
Helen & Francis Jahn  
Daniel Jensen  
Bruce Johnson  
Elizabeth Johnston  
Patricia & John Jordan  
JoAnn McNaughton Kade & Christo-  
pher Kade  
Aaron Kaplan  
Janeane Keller  
JoAnne & James Kenyon  
Beverly & George Kieffer  
Janice Kimpel  
Margaret Patten & Todd Kinney  
Nancy Kintzel  
Jeffrey & Patricia Kirby  
Gerri Kirchner  
Julia Kling  
Patricia & Frank Knowles  
Laura & Kipling Knox  
Christa Knust  
Marilyn Kohl  
Jean & Thomas Korder  
Barbara & Gary Koritz  
Elizabeth & David Krchak  
Susan & Curtis Krock  
Marilyn & Don Krummel  
Carrie & Richard Kubetz  
Judith Kutzko  
James Land  
Sharon Irish & Reed Larson  
Linda Lebie  
Shung-Wu Lee  
Carol Leff  
Jean Halstead & Beth Lehman  
Cecilia & Robert Lentz  
Joyce Meyer & Faye Lesht  
Patricia & Vernon Lewis

Cynthia & Michael Loui  
Ann Lowry  
Robin Luebs  
Janice & Joseph Maddox  
Suzanne & John Magerko  
Marguerite & Walter Maguire  
Christine & David Main  
S. Pauline & Mankin Mak  
Tracey & J. Victor Malkovich\*  
Kate Malmsbury  
Norma & Herbert Marder  
Suzanne & Robert Martensen  
Madonna & Phillip Matteson  
Dwayne D. McBride  
Teri McCarthy  
Jane & Michael McCulley  
Alina Reeves & Joseph Meier  
Carol & David Meitz  
Christen Mercier  
Kathleen & Alan Metcalf  
Sharon & David Mies  
Lynda & John Minor  
Charlotte Mattax Moersch & William  
Moersch  
Linda & Mark Moore  
Anna Louise & Terry Moore  
Liz & Dan Morrow  
Diane Mortensen  
Cara Finnegan & John Murphy  
Lloyd Murphy  
Lucy Miller Murray & Martin L. Murray  
Paul Nash  
Jane & Alan Nathan  
Carol Neely  
Jeffrey Nelson  
Eve Harwood & Mark Netter  
Jack Nibling  
Lynda Dautenhahn & Lee Nickelson  
Roxanna Nixon  
Holly Nordheden  
Jenene & Richard Norton  
Valerie & Thomas Oakley  
Charles Oellermann  
Donna & Paul Offenbecher  
Janice Olson  
David Ostrodka  
Terry Conour & Georgia Oswald  
Tracy Parsons  
Carolyn & Larry Pater  
Esther Patt  
Donna Cox & Robert Patterson  
Lois Pausch  
Jean & G. David Peters  
Linda & Lyn Peterson  
Mary Phillips  
Ann & Keith Pollok  
Karen Rao

Lori Rath  
Judith Rathgeber  
Margaret A. Reagan  
Susan & Sam Reese  
Julie & William Rettberg  
Carole & Adam Richardson  
Charles Rohrbaugh  
Thomas Rozanski  
The Walter E. Rucker Family  
Deborah Allen & Howard Schein  
Peggy Schickedanz  
Susan K. & Paul K. Schlesinger  
John Schneider  
Grace & William Schoedel  
Kathleen & Mark Schoeffmann  
Karl Heinz Schoeps  
Dawn Schultz  
Vicki Schumacher  
Patricia Fowler & Jose Schutt-Aine  
Geraldine Sczygiel  
Philip J. Seldis  
Rochelle Sennet  
Alys & Daniel Shin  
Lily Siu  
Elzbieta & Piotr Skorupa  
Deborah & James Smith  
E. Jean Smith  
Elyse Rosenbaum & Robert Smith  
Avigail & Marc Snir  
Melissa Breen & Cheryl Snyder  
Leellen & Philip Solter  
Penelope & Anthony Soskin  
Nancy Sottos  
Peter Cohen & Jeffrey Sposato  
Beth Stafford  
Deborah Stewart  
Gary Stitt  
Andrea Beller & Kenneth Stolarsky  
Tara & Jeff Swearingen  
Ellen & Thomas Swengel  
Catherine Thurston  
Diane Durbin & David Tjaden  
Jonathan Trupin  
Joan & Stanley Tunnell  
Julia & Thomas Ulen  
Grant Ullrich  
Candice & Frederick Underhill  
Chris Vallillo  
Anne Silvis & Albert Valocchi  
Cynthia Vandeventer  
Helen Vedder  
Carol Veit  
Linda & R. E. Veltman  
Julie Mason-Vermeulen & Paul Henri  
Vermeulen  
Alice & Leon Waldoff  
Shirley Walker

June & Ashton Waller  
Shengze Wang  
Diane & James Wardrop  
Ann & Ronald Webbink  
Cheryl & Russ Weber  
Carl Pius Weibel  
Larry Weinberg  
Elizabeth Weiss  
Michelle & Michael Wellens  
Janice & Gail Wernette  
Deborah & Michael Westjohn  
Paul E. Weston  
Karen & John Whisler  
Stephanie Daniels & Steven White  
Karen Taylor Willis & Tymothé Willis  
Susan & Mark Wisthuff  
Ava & Richard Wolf  
Timothy Wong  
Janie & Ehud Yairi  
Wendy & Glen Yang  
Rittchell & Peter Yau  
Michael Yonan  
Ruth Yontz  
Sally & Stephen Zahos  
Zhongmin Zhu  
Yvonne & Gerard Ziegler  
Sharon Shavitt & Steven Zimmerman  
Jillian & Christopher Zwilling

And gifts from five Anonymous donors

---

### Student Loop

Pyunghwa Choi  
Abhishek Joshi  
Xuhao Luo  
Mingyue Yu

---

### Memorial Gifts to the Loop

Robert L. Bender  
Amy Chrise  
Margaret & Scott Cline  
Susan & Michael Haney  
Betsy Hendrick  
Cherie & William Hodrick  
Laurie & Robert Hodrick  
Ingrid & Bruce Hutchings  
Judith & J.T. Iversen  
Elizabeth Johnston  
Mary & L.R. Jones  
Kimberly & Donald Knoche  
Barbara & Gary Koritz  
Linda & J.B. Luedeke  
Suzanne & John Magerko  
Sarah & Robert Nemeth



Charles Oellermann  
Lois & Robert Resek\*  
The Walter E. Rucker Family  
Sheleen Sandberg  
Julia & Thomas Ulen  
MaryBeth Walker  
Alex P. Bhanos  
Susanne Bhanos  
George R. Carlisle  
Debra & Kenneth Bezan  
James Economy  
Donna Decamara & Chris Dangles  
Anthony DeStefano  
Kelly & Danny Frich  
Melanie Loots & George Gollin\*  
Yongqing Huang  
Tiffany & James Langer  
Catherine & Jay Menacher  
The Orphanos Family  
Deba & Nihal Parkar  
Diane & Thomas Shipp  
Shelby & John Stifle  
Iris & Burton Swanson\*  
Yin Liu & Jinwen Wang  
Ling Wang & Zhongren Yue  
Donald A. Fischer  
Sue Anne Fischer  
Doris H. Harvey  
Vicki & Alan Good  
Jenny & Dick Harvey  
Grace F. Homma  
Sweeny Joog  
Susan S. McDonald  
Anonymous  
Charles J. & Joanne J. McIntyre  
The McIntyre Family  
Marilyn J. Nichols  
K.S. & Torin Hannan  
Howard & Jean Osborn  
Beverly & Michael Friese  
Jean Osborn  
Rachel Halfar  
Judith Miller  
Ellen & Thomas Swengel  
George B. Perlstein  
Rita & Arnold Blockman  
Toby & Ralph Bransky  
Harriet & Kenneth Cooke  
Reva & William Eggherman  
Ann Einhorn  
Kristin Fasy  
Beverly & Michael Friese  
Susan & Lewis Greenstein  
Bonnie & Steven Hill  
Nancy & Kenneth Kirsch  
Lynda & John Minor  
Joan & Anthony Peressini  
Nancy Pickus

Barbara Powell  
Gloria Rainer  
Vicki Schumacher  
JoAnn Murray-Spencer & Clifford  
Spencer  
Cecile Steinberg  
Iris & Burton Swanson  
Elizabeth Talbot  
Nancy Tennant  
Nancy & Edward Tepper  
Ellen Walbert  
Christie Watkins  
Larry Weinberg  
Kathryn M. Romans  
The Karmia Family  
Cynthia & Edward Pillar  
Bernadine & Ed Pillar  
Julia & Casey Wold  
Melvin Rubin  
Lesley Rubin  
Robert Malik Winter  
Sarah Hasib  
Pete & Molly Yunyongying

---

\*Former member of the Krannert  
Center Advancement Council

---

# KRANNERT CENTER VOLUNTEERS

## COMMUNITY VOLUNTEERS

Paula Abdullah  
Nisha Aggarwal  
Elizabeth Allison  
Harold Allston  
Brant Asplund  
Tammy Asplund  
Mike Atkinson  
Debora Avelino  
Ron Baker  
Jane Barry  
Heather Baseler  
Pam Bedford  
Paul Beinhoff  
Janice Bellington  
Ann Bergeron  
Kathy Bergeron  
Priya Bhatt  
Shohan Bhattacharya  
Karen Bojda  
Brunna Bozzi  
George Brock  
Jonne Brown  
Krishni Burns  
Mark Casco  
Felix Chan  
Yoline Chandler  
Coco Chen  
Wen-Chi Chen  
Kathleen Corley  
Kathleen Correa  
Jessica Crane  
Jessica Dager  
Millie Davis  
Cara Day  
Kasandra Delafuente  
Lori Deyoung  
William Dick  
David Dorman  
Astrid Dussinger  
Kathy Dwyer  
Sheryl Dyck  
Peter Dyck  
Debra Eichelberger  
Stacey Elliott  
Beth Engelbrecht-Wiggans  
Richard Engelbrecht  
-Wiggans  
Roger Epperson  
Vennie Ewing  
Elizabeth Faulkinberry  
Judy Federmeier  
Cliff Federmeier  
Dee Feickert  
Andrea Fierro

Peter Floess  
Patricia Floess  
B. Jean Flood  
Richard Flood  
Elizabeth Frankie  
Roger Fredenhagen  
Bianca Galvez  
Zeidy Garcia  
Inga Giles  
Emma Glezer  
Robin Goettel  
Michelle Gonzales  
Gene Grass  
Sandy Haas  
Catherine Haney  
Katherine Hansen  
Susan Hansen  
Tonya Hartman  
Mike Havey  
Kathy Havey  
Judith Haydel  
James Hayes Jr.  
Kate Heiberger  
Cynthia Helms  
Kathy Henry  
Abby Heras  
Joan Hood  
Peter Hood  
Mary Hosier  
Betsy Hunter  
Ingrid Hutchings  
Elizanena Ibarra  
Janice Impey  
Laurie Jacob  
Roland Jean  
Cynthia Jean  
Sten Johansen  
Diana Johnsn  
Marcy Joncich  
Carlton Kagawa  
Debra Karplus  
Karan Keith  
Janeane Keller  
Patti Ketchmark  
Ashley Kirby  
Daniel Krehbiel  
Spencer Landsman  
Linda Larson  
Diane Lassila  
Warren Lavey  
Josephine Lee  
Hannah Lee  
Eunsun Lee  
Vincent Leonard  
Jennifer Lin  
Fei Lin

Feikai Lin  
Xiao Lin  
Sheila Loosevelt  
Penny Lopez  
Lynda Lopez  
Robert Lou  
Ginger Lozar  
Michelle Lynn Gill  
Janice Maddox  
Marguerite Maguire  
Mary Manley  
Marina Marjanovic  
Nenad Marjanovic  
Nicole Martinez  
Bobbi McCall  
Teri McCarthy  
Sarah McDougal  
Jim McEnerney  
Linda McEnerney  
Liz McMillen  
Susan Meinkoth  
Kathy Metcalf  
Sharron Mies  
David Mies  
Martha Milas  
Carol Miles  
Carol Miller  
Michael Miller  
Julie Mills  
Patrick Mills  
Jihyeon Min  
Margrith Mistry  
Frank Modica  
Martha Moore  
Thom Moore  
Pnina Motzafi-Haller  
Christina Myers  
Jane Myers  
Manisha Naganatanahalli  
Linda Neider  
Michael Nelson  
Peter Newman  
Jerome Ng  
Johnson Nguyen  
Dick Norton  
Saray Ocampo  
Alejandra Ochoa  
Marjorie Olson  
Carol Osgood  
Brenda Pacey  
Cynthia Perez  
Pezz Pezz  
Joel Plutchak  
Renee Potter  
Carolyn Presley  
Robbie Pulliam

James Quisenberry  
Jill Quisenberry  
Anne Raczak  
Beverly Rauchfuss  
Sam Reese  
Victoria Rice  
Monique Rivera  
Marcelo Rosa Mazzocato  
Laurel Rosch  
Joyce Ruder Jackson  
Tanya S  
Faaiza Saif  
Corinne Saldeen  
Uriel Sanchez  
Jean Sandall  
Christian Sarol  
Barbara Schleicher  
Dawn Schultz  
Izzy Scott  
Christel Seyfert  
Lei Shanbhag  
Edward Snyder  
Isaac Soloveychik  
Jennifer Steele  
Carolyn Stewart  
Margaret Stillwell  
Carrie Storrs  
Judy Swiger  
Weifeng Sun  
Casey Tan  
John Taylor  
Alice Taylor  
Adrian Testo  
Jamie Thomas-Ward  
Lee Trail  
Pat Tuchman  
Allan Tuchman  
Barbara Turner  
Julia Ulen  
Lynda Umbarger  
Valeria Vargas  
Dianna Visek  
Frank Vivirito  
Kathy Vivirito  
Louise Walczak  
Spencer Walden  
Anna Maria Watkin  
Jean Weigel  
Whitney Welsh  
Linda Wessels  
Jasmine White  
Kathy Wicks  
Liesel Wildhagen  
Diane Wilhite  
Ed Wilhite  
Douglas Williams

Susie Wright  
Lei Xia  
Yu Xia  
Nancy Yeagle  
Sally Zahos  
Jennie Zermeno  
Nicole Zhang  
Rui Zhao  
Wenbin Zhou  
Bruce Zimmerman  
**KRANNERT CENTER  
STUDENT ASSOC.**  
**Administrative Board**  
Diana Pham, President  
Alexa Bucio, Vice President  
Rochelle Tham, Secretary  
Trevor Santiago, RSO  
Liaison Officer  
Judy Chiang, Event  
Coordinator  
Emily Yan, Website Chair  
Cedric Mathew, Treasurer

## Members

Aki Akhauri  
Michelle Burns  
Jingwen Dai  
Rowan Frantz  
Elena Gonzalez  
Jessica Gossen  
Stanley Gu  
Ally Guo  
Hayley Kelleck  
Haley Kennedy  
Ryan Lin  
Xiao Lin  
Jenny Liu  
Seren Liu  
Sian Liu  
Yuanze Luo  
Christine Millins  
Samantha Moran  
Jess Nathan  
Daniel Oster  
Yueting Su  
Fu Sun  
Haley Van Patten  
Claire Wu  
Xuan Yi  
Andy Yoon  
Menghao Yu  
Yangxue Yu  
Lucia Zhang  
Valerie Zhao

---

# KRANNERT CENTER STAFF

---

Mike Ross, Director  
Terri Anne Ciofalo, Associate Director  
for Production  
Maureen V. Reagan, Associate Director  
for Marketing

---

## EVENTS

Andrew Giza, Events Director  
Andrew Almeter, Senior Production  
Coordinator for Events  
Bree Brock, Production Coordinator  
for Events  
Seth Wheeler, Technical Coordinator  
for Events

---

## PROGRAMMING AND ENGAGEMENT

Jason Finkelman, Artistic Director of  
Global Arts Performance Initiatives  
Emily Laugesen, Co-Director of  
Engagement  
Sam Smith, Director of Civic Engagement  
and Social Practice

---

## ADVANCEMENT

Cheryl Snyder, Director of Advancement  
Bethany Whoric, Assistant Director  
of Advancement  
Ellen Fred, Advancement Support  
Associate

---

## FINANCE AND OPERATIONS

### Business Office

Katie Brucker, Debbie Delaney, Stacey  
Elliott, Shelly Thomas-Eichorn,  
Accounting Staff  
Tara Heiser, Human Resources Support

## Building Operations

John O. Williams, Facility Manager  
Tony Mapson, Assistant Facility Manager  
Joe Butsch, Building Electrician  
Jared Painter, Assistant Chief Building  
Operations Engineer  
Scott Butler, Eric Carr, Emmett Catlin,  
Austin Dearth, John Ekstrom, Bryan  
Franzen, Mark Lashbrook, Jacob  
Lerch, Kevin Logue, Jessica Fancher,  
Attendants  
Glenda Dalton, Office Support Associate

---

## MARKETING

Maureen V. Reagan, Associate Director  
for Marketing

## Communications

Sean Kutzko, Assistant Communications  
Director  
Nicholas Mulvaney, Senior Designer

## Public Services

Lisa Lillig, Client & Food Services Director  
Elizabeth Henke, Catering Manager  
Michael Bunting, Intermezzo Supervisor  
Zia Moon, Krannert Center Showcase  
Director, Office and Communications  
Support Specialist  
Whitney Havice, Interim Ticketing and  
Patron Services Director  
Ty Mingo, Assistant Ticket Services  
Director  
Jon Proctor, Nick Wurl, Ticket Sales  
Supervisors  
Ann-Marie Dittmann, Patron Services  
Assistant Director  
Adrian Rochelle, Front of House  
Performance Supervisor

## PRODUCTION

Terri Anne Ciofalo, Associate Director  
for Production

## Audio Department

Rick Scholwin, Audio Director  
Alec LaBau, Associate Audio Director/  
Video Director

## Costume Shop

Andrea Bouck, Costume Director  
Richard Gregg, Costume Rentals Director  
April McKinnis, EB McTigue,  
Cutters/Drapers  
Julianna Steitz, Theatrical Stitcher

## Lighting Department

Lisa Kidd, Associate Lighting Director

## Properties Department

Adriane Binky Donley, Properties Director  
Kira Lyon, Assistant Properties Director

## Scene Shop

Ryan Schultz, Technical Director  
Tatsuya Ito, Associate Technical Director  
Bill Kephart, Scene Shop Chief Clerk  
Dylan Kind, Theatrical Scene Shop  
Coordinator  
Bobby Reynolds, Theatrical Scene Shop  
Assistant  
Liam Romano, Theatrical Scene Shop  
Assistant

## Stage Management

Cynthia Kocher, Production Stage Manager

---

# WE'RE SO GLAD YOU'RE AT THE CENTER

We work to create the best possible setting for the experiences you seek and find here.

## NECESSARIES

Restrooms are located in the foyers of Foellinger Great Hall, Tryon Festival Theatre, and Colwell Playhouse; the east entrances on the Lobby level; and in each elevator lobby on Level 1 and Level 3. Lobby restrooms and one restroom in each elevator lobby are fully accessible and contain baby-changing stations.

Ushers will be happy to provide you cough drops courtesy of St. Joseph Apothecary, or disposable foam earplugs if the place starts rockin'.

If you or a companion needs medical assistance, contact an usher or other staff member.

Please take a moment before the performance to note the theatre exits nearest to you. If it becomes necessary to evacuate the theatre, please remain calm, follow the instructions of the house staff, and exit in an orderly fashion to the appropriate safe meeting location, which will be announced to you.

## SIGHTS AND SOUNDS

The use of cell phones, cameras, and recording devices during performances is prohibited unless otherwise announced from the stage.

## LATE ARRIVALS

As a courtesy to performers and audience members, latecomers will be seated only at times selected in advance by the artist. Should you find that you've arrived late to a performance, our Patron Services staff will keep you informed about the earliest seating opportunity.

## LOST ITEMS

If you are in need of Lost and Found, please visit the Patron Services counter. We will do our best to reunite object and owner!

## TICKET RETURNS

If you find you can't attend a performance, please contact the Ticket Office in advance, preferably by 6pm the day before the performance (kran-tix@illinois.edu or 217.333.6280). We never charge a handling fee on ticket transactions.

## SERVICES

Krannert Center for the Performing Arts is committed to making experiences accessible for all patrons, and we are delighted to provide a number of services to assist you. Krannert Center is equipped with an assisted listening system, wheelchair-accessible and no-step/few-step seating, and large-print programs, Braille programs, and American Sign Language interpreters are available with three weeks' advance notice.

For assistance regarding your visit, please email: Para ayuda en relación con su visita, favor de enviar un email a:

Pour vous aider dans votre visite, prière de nous envoyer un courriel à:

欢迎! 如若您对我们的造访需要帮助, 请发送电子邮件至:

स्वागत है! अगर आपको अपने रहने के लिए मदद चाहिए, ईमेल कीजिए:

환영합니다! 방문에 관해 도움이 필요하실 때에는...

에게 이메일로 문의하시기 바랍니다:

**PATRONSERVICES@KRANNERTCENTER.ILLINOIS.EDU**  
**217.333.9716**