



LATASHA BARNES PRESENTS
THE JAZZ CONTINUUM

Saturday, September 14, 2024, at 7:30pm
Tryon Festival Theatre

PROGRAM

LATASHA BARNES PRESENTS
THE JAZZ CONTINUUM

EXPLORATIONS OF THE CONTINUUM

The Welcome & Charge

The Call

The Embodiment

The Response

The Exchange

The Vibe

Our Acknowledgment

SOUNDSCAPE ELEMENTS

Welcome to the Continuum DJ Set

by DJ Porcia Lewis

Clarion Call

by Jeff Bradshaw & Brass Heaven

Mz Mickey's Blues

by TJC Music Explorers

Crazy Race

by RH Factor

Night in Tunisia

by Dizzy Gillespie

Take The 'A' Train

by Duke Ellington

Summer Nights in Harlem

by Bill Withers, remixed by The Fantasy

Caravan

by Duke Ellington, Juan Tivoli, & Irving Mills

React

by Erick Sermon

London Towne

by Ulysses Owens Jr. & UOJ Big Band

Un Poco Loco

by The Eyal Vilner Big Band

When I'm in Your Arms

by Cleo Soul

Feelings (Live)

by Dre Scott

Dope (for the Steppers)

by Christopher McBride

The Stops

by TJC Explorers

Chilllll

by Traxman

Maku Wrong, featuring Madanon

by Que DJ

Sound the Alarm, featuring Okai Musik

by Sabine Blaizin & Okai Musik of Oyasound

An ancestrally curated selection of House, R&B, Hip-Hop, and Soul tunes from the Chicago area and beyond

curated by The TJC Music Explorers

Jhost Town

by Jovann

CHOREOGRAPHY CREDITS AND SOURCE NOTES

Choreography & Improvisatory Direction
LaTasha Barnes

Miz Mickey's Blues
original choreography by Ms. Mickey Davidson as shared in *The Embodiment*

The Shim Sham
original choreography by Leonard Reed and Willie Bryant, reimagined by Frankie Manning and TJC Dance Explorers

Blues Stops
(inspired by historical Harlem STOPS routine by Harlem-based Lindy Hoppers) as explored in *The Exchange*, original choreography by Bobby White and LaTasha Barnes

Lite Stops
(a reimagining of Blue Stops in Harlem Lite Feet vernacular) as explored in *The Exchange* by Imani Arrington and TJC Dance Explorers

"Truth Is" Line Dance as shared in *The Exchange*, reimagined as "Jazz Is . . ." and partnered Line Dance by All S.N.A.P. (Something New and Poppin) and TJC Dance Explorers

Historical Lindy Hop and Jazz choreography as shared in *The Embodiment*, *The Response*, and *The Exchange* by Harlem Community Dancers, Whitey's Lindy Hoppers, Marie Bryant, Harold Nicholas, Consuelo Harris, Mabel Lee, Earl "Snake Hips" Tucker, and Sammy Davis Jr., Cholly Atkins, and Honi Cole

The Queen Swings Basie/Trickieration as shared in *The Vibe*, by Norma Miller, original choreography passed forward with assistance of Chester Whitmore

Additional choreography contributed by TJC Explorers

The Jazz Continuum was supported and presented by Guggenheim Works & Process and Jacob's Pillow Dance Festival in 2021. LaTasha Barnes received a 2022 National Dance Project production grant for the further development of *The Jazz Continuum* by the New England States Touring program of the New England Foundation for the Arts, made possible with funding from the National Endowment for the Arts Regional Touring Program and the six New England state arts agencies. The presentation of *The Jazz Continuum* at the Joyce Theater in October 2022 marked the work's proscenium premiere. *The Jazz Continuum* was also presented at the Williams Center for the Arts at Lafayette College, Celebrity Series Boston, Bates Dance Festival, The Kennedy Center for the Performing Arts, the University Musical Society at University of Michigan, The Dance Center at Columbia College Chicago, and is honored to be presented here at Krannert Center for the Performing Arts.



ARTIST STATEMENT

The Jazz Continuum is the manifestation of a long-held dream—a space of creativity built upon the tenets of community, play, improvisation, and an unapologetic celebration of our full being! An unapologetic acknowledgment of all shades, compilations, and expressions within the Black experience. The establishment, or re-establishment as it were, of my personal relationship with Jazz music and dance in a time of great personal uncertainty brought me to a place of great clarity—understanding of myself, trust in my creative faculties, and a robust sense of hope. Hope for what this culture could be and what my communities could be encouraged to express and affirm through the prolific beauty that is our cultural continuum. Born of my research analysis during grad school at NYU Gallatin, this transformative project’s full intentions are to provide space for a celebratory negotiation of Black dancers’ and musicians’ relationships to Jazz and its progeny (Soul, Funk, Hip-Hop, House, et al.) and all the technologies they have birthed.

This project works to bridge the knowledge, expressive, and creative gaps that our disjointed and compartmentalized social and academic experiences have left many of us with. You have the honor of witnessing, in real time, these artists’ explorations through the continuum and our efforts to inhabit/embody them generatively toward our next phase of being. We aim to acknowledge the efforts and gifts of our ancestors and community elders by uplifting the vestiges of their genius within our current Black cultural forms (music and dance) and

offering to the continuum something new. It is my deepest wish that as new ways of composing our expressions or seeing our collective are established, the “presentation” of *The Jazz Continuum* will pass forward to its next torch bearer. While that progresses, we thank you for bearing witness to our journey and making space to support this process with your energy and other gifts. We give thanks to our ancestors, to our elders, to the universes, and to each other for daring to share in this way, and again we thank you for celebrating the limitless power and joy that is *The Jazz Continuum*.

To *The Continuum*!

—LaTasha Barnes

CRU ROSTER

DIRECTING TEAM

Visionary & Artistic Director
LaTasha Barnes

Musical Director
Christopher McBride

Lighting Designer
serena wong

Costume Director
Anna-Alisa Belous

Dramaturg
Melanie George

PRODUCTION TEAM

Production Manager
Sarah Chapin

Lighting Designer
serena wong

Lighting Director
Amara Payton McNeil

Rehearsal Director
Reyna Núñez

Assistant Rehearsal Director
Le'Andre Douglas

Stage Manager
LaChelle Edwards

Audio Engineer
Kwamina "Binnie" Biney

Onsite Audio Engineer
Samy Ravs

Company Manager
Danielle Mastricola

Managing Producer
Laura Colby

DANCE EXPLORERS

Imani Arrington
LaTasha Barnes
Traci Bartlow
Ray F. Davis
Le'Andre Douglas
Tyedric Hill
Ama Law
Reyna Núñez
Brooklyn Terry

MUSIC EXPLORERS

Bass
Errick Lewis

Drums
Marcus Parker

DJ/Turntablist
Porcia Lewis

Piano
Idris Frederick

Saxophone
Christopher McBride

Vocals
Imani Rousselle

GUEST EXPLORERS

Star Dixon
Donetta "LilBit" Jackson

PROFILES



LaTasha Barnes (Visionary/
Artistic Director/Dance
Explorer)

Multi-Bessie Award winner LaTasha Barnes (Braintrust, Dancer) is an internationally recognized and celebrated dance artist, insightful educator, and Tradition-Bearer of Black American Social Dance. Currently operating between New York and Phoenix, Barnes' expansive artistic, competitive, and performative skills have made her a frequent collaborator to arts organizations around the world, including the Kennedy Center for the Performing Arts, Dorrance Dance, Summer Dance Forever (NL), and many others. She is honored to serve as the visionary creator and Artistic Director of the critically acclaimed intergenerational and intercommunal Black cultural arts experience *The Jazz Continuum*. Her *Continuum*-based research serves as a guidepost in her efforts as Associate Professor of Dance & Cultural Anthropology on the highly innovative faculty of Arizona State University School of Music, Dance and Theater. Across all communities and positions, LaTasha's purpose is to inspire activism through an authentic sense of self and unapologetic joy.



Christopher McBride
(Saxophone/Musical Director/
Musical Explorer)

Christopher McBride is a saxophonist based in Harlem whose work includes education, arranging, and composition, in addition to performance. Born in Chicago and starting his professional career there in 2007, Christopher made the move to New York City in 2013. His group The Whole Proof has

played venues all over New York, and Christopher ran his 'Singer Meets Saxophonist' series at the famed Minton's Playhouse in Harlem from 2017–2019. The musicians he has performed with span many genres and include artists such as Billy Preston, Jimmy Heath, Bobby Broom, Percy Gray, Roy Hargrove, Pete Rock, Big Daddy Kane, Talib Kweli, Lupe Fiasco, Guy Sebastian, Solange, Ne-Yo, Jennifer Hudson, Alice Smith, Brandon Flowers, Lea DeLaria, 88 Keys, Milton Mustafa, Winard Harper, and the Marquis Hill Blacktet. Christopher also serves as the Director of Education for the Second Line Arts Collective, a not-for-profit organization based out of New Orleans. He has also worked as a journalist and consultant with Forbes Ignite, the innovation coalition of Forbes. He recently received a Grammy nomination for his work on Steven Feifke and Bijon Watson's 2022 album *Generation Gap Jazz Orchestra*. As a composer, McBride was recently selected as the 2022 Make Jazz Fellowship artist at the 18th Street Arts Center in Santa Monica.



Melanie George (Dramaturg/
MC/Dance Explorer)

Melanie George is the founder of Jazz Is. . . Dance Project and Associate Curator and Scholar in Residence at Jacob's Pillow. In 2021, she was named one of *Dance Magazine's* 30 over 30.

As a dramaturg, she has contributed to projects by Raja Feather Kelly, Helen Simoneau, Susan Marshall, Alice Sheppard, Urban Bush Women, and SWING OUT, among others. Melanie is featured in the documentary *UpRooted: The Journey of Jazz Dance* and is a contributing scholar to *Jazz Dance: A History of the Roots and Branches* and *Routed Jazz Dance: Africanist Aesthetics and Equity in*

the Twenty-First Century. Melanie is an Assistant Professor of Dance at Rutgers University and has guest lectured at Harvard University, the Yale School of Drama, and The Juilliard School. She is the guest curator for the 2024 American Dance Platform at the Joyce Theater and the recipient of the Outstanding Leadership Award from the National Dance Education Organization. For more information, visit, www.melaniegeorge.org



Imani Arrington (Dance Explorer)

Imani Arrington, a Brooklyn native, movement artist, and culture bearer, has trained and worked professionally for over a decade. Imani has since been mentored by profound

practitioners and tastemakers of the culture in styles including but not limited to Hip-Hop/Litefeet, House, and Jazz. In her professional career, Imani has performed in world-renowned theatres such as the Joyce, the Kennedy Center, the Guggenheim, and more. Imani currently is a dance educator and artistically collaborates and performs with the collective Ladies of Hip-Hop and *The Jazz Continuum*.



Traci Bartlow (Dance Explorer)

Hailing from Oakland, California, Traci Bartlow is a multi-hyphenated artist whose first love is dance. Her passion is documenting and preserving Black dance and culture. In 2023, she received

a proclamation from the mayor of Oakland recognizing her significant contributions as “a great woman of Hip-Hop.” This reflects decades of work in Hip-Hop culture, the areas of dance and photography. Bartlow is a story consultant and contributing writer for the 2022 Emmy Award-winning film *If Cities Could Dance—Oakland*

Boogaloo. She has served her community for many years as a founding member of Eastside Cultural Center and a board member for City Center Dance Theater and has consulted with several arts and social justice organizations on scaling their impact on their changing neighborhoods. In 2024, she was awarded a YBCA Creative Corps Fellowship in support of her transformative community engagement programming.



Duane Lee Holland, Jr. (Dance Explorer)

Duane Lee Holland, Jr. began his career as a gymnast as a member of the Junior. National Team. He began his professional dance career at the age of 17 as an original core member of

Rennie Harris Puremovement. He was also in the original Broadway cast of *The Lion King*, as well as featured dancer and assistant choreographer of Maurice Hines’ Broadway production of *Hot Feet*. In May 2015, Duane graduated magna cum laude from the University of Iowa with a Master of Fine Arts in dance, with a focus in choreography. He was the first Hip-Hop artist to graduate from their graduate program. In August 2016, Duane joined the Boston Conservatory at Berklee as their first Hip-Hop full-time faculty member. In May 2019, Duane was installed as an assistant professor of dance at the University of Wisconsin-Madison, where he is the first Hip-Hop faculty member.



Le’Andre Douglas (Dance Explorer)

Le’Andre Douglas is a nationally accomplished dancer, choreographer, and teacher from Houston, Texas with over a decade of professional dance experience. Le’Andre has performed, choreographed, opened, and been a part of the creative process of acts like Grammy-

nominated artists Tamar Davis, Pitbull, Omarion, B.o.B, rock legend Pat Benatar, and the Barenaked Ladies; Hip-Hop legends LL Cool J, Kid 'n Play, Big Daddy Kane, The Sugar Hill Gang; and many more. His mission is to preserve and innovate Black culture within the body through dance education classes, performances, and social events. Mr. Douglas believes that he can help fill the gap where there is lack of access to education about the cultural lineage and African origins of Black cultural dances, while also teaching the necessary performance skills for dancer development.



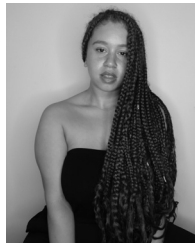
Tyedric Hill (Dance Explorer)

Tyedric Hill is an international dancer, teacher, and choreographer who specializes in Black American social and cultural dance traditions. He established a movement foundation in liturgical and

modern dance, and expanded into Hip-Hop and animation in high school. Over the years, he's established a background enriched and informed by many movement traditions, including Capoeira and Stepping. He regularly tours internationally as a teacher and Tradition-Bearer of Authentic Jazz. He's earned various titles at events such as the International Lindy Hop Championships and the Uptown Swingout, but his true pride as an artist is continuing to discover who he is by honoring those who came before him.

through organizations and institutions like Bates Dance Festival, Dance Place DC, and the University of Maryland College Park, where Ama is currently artist-in-residence.

Mother. Lover. Achiever. Ama enjoys spending time with family and making art projects with her daughters. Ama often teaches and collaborates with her husband Chris as Project ChArma, a project-based dance theatre company dedicated to using art as activism. They recently debuted *Chronicles of Nina*. . . *What now?* at the Kennedy Center as a culmination of the Local Dance Commissioning Project 2024.



Reyna Núñez (Rehearsal Director/Dance Explorer)

2023 Frankie Manning Foundation Fellow Reyna Núñez grew up immersed in the rich arts and culture tapestry of New York City. Truly one of a kind, her unique physical expression

of art is representative of her diverse upbringing. Núñez is a dancer, choreographer, educator, and visionary. Her repertoire includes Vernacular Jazz, Lindy Hop, House, Voguing, Waaking, Tap, Hip-Hop, Modern, and Ballet. Her expansive training led to work with artists such as Louie Vega, Lizzo, Janet Jackson, and more. Núñez was featured in the film *In The Heights* as well as international campaigns such as Aldo: Step Into Love, Deepak Chopra for Amazon Audible, and Adidas: Women's History Month. Wearing a multitude of hats, Núñez dually serves as the Administrative Assistant to LaTasha Barnes and the Rehearsal Director for *The Jazz Continuum*. She continues to expand her artistry as a choreographer and serves as Assistant to the Artistic Director Michele Byrd-McPhee of Ladies of Hip-Hop and Ladies of Hip-Hop Dance Collective. Núñez can be found gettin' down anywhere between the club to the stage, preserving culture and holding space at the intersection of spirituality and vernacular



Ama Law (Dance Explorer)

Artist. Educator. Hip-Hop lover. DMV representative. Ama Law is a West African dancer at heart who explores intersectionality and loves to share knowledge. Although educating is the biggest

passion, Ama is a lifelong learner. This MFA dance graduate is continuously teaching and learning

movement of the Afro diaspora.



Brooklyn Terry (Dance Explorer)

Terry Wright was born and raised in Brooklyn. Growing up with the golden era of Hip-Hop at his doorstep, he took in all of the sights, sounds, and energy of the culture and art.

From the early age of 15 he began frequenting the transformative New York club scene and eventually became one of the most influential street dancers in the world. He is the youngest member of the Elite Force Crew, who are now known for creating the foundation of Hip-Hop dance as we know it today. He went on to work and tour with artists such as Mariah Carey, Will Smith, Missy Elliot, Ricky Martin, Da Brat, Left Eye (of TLC), just to name a few. His career has positioned him to become a cultural connector in the global street dance, fashion, skateboarding, street art, and music scenes. He also has collaborated with top brands such as RedBull, StockX, Reebok, Y3 Adidas, Nike, G-Shock, BrewDog Brewery, Blue Moon Belgian Beer, Jameson Whiskey, Fila, Pioneer DJ, and Snipes. He has leveraged his connections to produce diverse events, workshops, and collaborations that have contributed to driving brand awareness and affinity amongst the customers of his partners. Currently, he travels the world as a university lecturer, influencer, entrepreneur, DJ, and street dance pioneer.



Idris Frederick (Piano/Musical Explorer)

Idris is a 25-year-old pianist and composer who was born in Detroit, Michigan. Before moving to New York to study at The New School of Jazz, he

spent the first six years of his career performing alongside some of the biggest talents in and around the Louisville area. He is now expanding his career to global lengths and changing lives with the power of his music. You can follow Idris on his social media platforms.



Errick Lewis (Bass/Musical Explorer)

Errick is a talented multi-instrumentalist and producer, owning his own label, X-vibe Records. He is well versed in Funk, R&B, Rock, Jazz, and Hip-Hop genres and has worked

with a number of well-known artists such as Stevie Wonder, D'Angelo, Lauryn Hill, Jay-Z, Common, Talib Kweli, Mos Def, Snoop Dogg, Wu Tang Clan, Jill Raheem DeV Vaughn, and Mike Phillips. A native of Compton, California, Errick is a self-taught musician who was raised around music, playing drums in church when he was eight years old. Errick has performed with some of the top names on the music scene at arenas across the United States, including the Playboy Jazz Festival, the Montreal Jazz Festival, Sun Fest, The Blue Note in New York City, Blues Alley in Washington, DC, and the Hollywood Bowl. Errick has been the musical director for Erykah Badu, Karen Briggs, and Kim Burrell, and co-produced saxophonist Hailey Niswanger's new album with Grammy Award-winner Thara Memory. In June 2013, after spending years developing and exploring his musical ideas, Errick debuted his first album as a leader, *Where Musician Ends and Instrument Begins*. Currently, Errick works full-time as a musician in Portland and has begun composing for his second album.



Porcia Lewis (DJ/Turntablist/
Musical Explorer)

Porcia Lewis aka MOON BABE is a house music DJ from Crown Heights, Brooklyn. Porcia has been in the House community since 2019, moving her way through the community as a club dancer, partygoer, mentee, and DJ. Porcia has made it her goal to spread the energy and feeling that is house, club, and dance music with the world and beyond.



Marcus E'Shadd Parker
(Drums/Musical Explorer)

Marcus E'Shadd Parker has been strategically groomed for his inheritance of funk royalty since 1983. As the son of funk pioneer Melvin Parker, he was born in Washington, DC and raised in Richmond, Virginia. Marcus was only an infant when he first picked up a pair of drumsticks and has been wowing crowds since the age of six. He also understands and demonstrates that funk isn't something that can be done part-time; it's truly a gift that lives within. His gift of funk has gathered him international acclaim, performing with greats such as Aretha Franklin, Prince, Candy Dulfer, and Anne Nesby, as well as a five-year tenure with funk icon Marceo Parker. One experience is all that's needed to recognize that he is indeed what Prince called "The Son of Melvin."



Imani Rousselle (Vocalist/
Musical Explorer)

Imani Rousselle is a Texas-born vocalist with a love for interpreting and delivering the message of lyric. Whether singing jazz standards or contemporary compositions, her

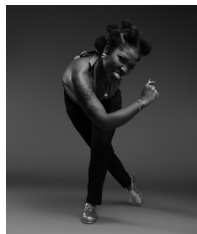
voice invites you to follow along as she fills space with carefully crafted sound. She currently makes her home in New York City, having graduated from the Manhattan School of Music in the spring of 2021. Prior to moving to New York City, Imani studied at Columbia College Chicago, during which time she performed on many stages around the city, including the legendary Jazz Showcase and The Green Mill, and gained the honor of being named a Luminarts Cultural Fellow. Since moving to New York in 2019, Imani has been able to sing on stages including the world famous Dizzy's Jazz Club, Clements Place, the Schomburg Center in Harlem, The Joyce Theater, and more. She has performed alongside great musicians including Stefon Harris, Casey Benjamin, Marc Carey, Jaleel Shaw, Domo Branch, Cory Henry, and Roger Boykin, and is excited to continue expanding creatively and performing in a world with renewed fervor for connection and creation.



Donnetta "LilBit" Jackson
(Guest Artist)

Donnetta "LilBit" Jackson is a versatile dance performer, instructor, choreographer, and actress. Born and raised on the Southeast Side of Chicago, she began dancing at the Sammy Dyer School of the Theatre at the age of seven. At 11 years old, she became one of the original members of the prestigious MADD Rhythms tap company, and later joined the Chicago Footwork crew, Creation Battle Clique / Creation Global. She choreographs for and performs with Grammy Award-winning artist Chance the Rapper. One highlight of her career is performing alongside Missy Elliot at the 2019 VMAs for her Michael Jackson Video Vanguard Award performance. Recently acknowledged as a Sister with Superpower for *Rolling Out* magazine, Jackson has also footworked internationally for corporations

like Nike and Jordan and has competed on Season 6 of MTV's *America's Best Dance Crew* with the Chicago FootworKINGz. Recently, Jackson appeared on the Fox dance series *The Big Leap* as Tamra Smalls and was also one of the lead dancers in the Red Hot Chili Peppers new video "The Drummer"!



Star Dixon (Guest Artist)

Star Dixon is an assistant director, choreographer, and original principal dancer of world-renowned tap company MADD Rhythms. She has taught and performed at the most distinguished tap festivals

in the country including the LA Tap Fest, DC Tap Fest, RIFF Dallas, Chicago Human Rhythm Project's Rhythm World, and MADD Rhythms' own Chicago Tap Summit. She's performed internationally in Poland, Japan, and Brazil, to name a few. Performance venues include Jacob's Pillow, Kennedy Center, and the Lincoln Center. Outside of MADD Rhythms, she's performed as a guest with such companies as Michelle Dorrance's Dorrance Dance and Savion Glover's All Funk'd Up. Most recent awards include 3arts Make a Wave 2019, Chicago Dance Makers Forum Lab Artist 2022, Chicago Reader Best Dancer 2021, and Best Choreographer 2022



Kwamina "Binnie" Biney
(Audio Engineer)

Kwamina "Binnie" Biney is a New York-based audio-visual artist. His contributions to works range from mixing and mastering, composing, and sound designing. As a recording

artist, Kwamina released several projects under the name Binnie Musa. In the process of recording his first mixtape demos, Binnie quickly discovered

his desire to understand the technical side of audio in an attempt to have more intention on the processing of the music. He has worked with many Brooklyn-based artists in accompaniment with his own projects. In the summer of 2017, Binnie was offered an opportunity to explore the world of performing arts. From his humble beginnings, as an A1 at New Life Missionary Baptist Church, he continued to water his growth by working for off-Broadway theatres such as Saint Ann's Warehouse, The Public Theater, SoHo Rep, and the Signature Theater, to name a few. His hard work ethic and willingness to expand the knowledge of the field has led him to be a major contributor to many important projects, including Sound Designer for *The Till Trilogy*, a series of plays written by Ifa Bayes that went on to win a Helen Hayes Award, and Nora Chipaumire's *Nehanda*, an opera featured at Lincoln Center.



Sarah Chapin (Production Manager)

Sarah Chapin (she/her) fuses her technical expertise, dance training, and passion for systems and organization with an expansive can-do attitude to support artists

making a more just and joyful world. She works as a stage manager, production manager, theatrical electrician, carpenter, educator, and all-around technician for dance artists and arts organizations, including past work with Dance Place, Bennington College, Joy of Motion Dance Center, Abby Z and the New Utility, Christopher K. Morgan and Artists, Gesel Mason Performance Projects, Coyaba Dance Theater, and Extreme Lengths Productions. She has been in love with Lindy Hop for 15 years and is a co-founder and organizer of New Columbia Swing in her home city of Washington, DC.



LaChelle Edwards (Stage Manager)

LaChelle Edwards has over 25 years of performance, choreography, and production consultation experience. She has studied and performed at the Duke Ellington School of

the Arts, Alvin Ailey American Dance Center, Joy of Motion Dance Studios, and various locations throughout the East Coast. LaChelle continues to perform, choreograph, and teach in the DC area and has assisted in creating VCMIDC's Christmas productions, including *A Christmas Carol*, *It's A Wonderful Life*, and *How the Grinch Stole Christmas*, and now, *A Miracle on 34th Street*. She is excited to continue to work with VCMIDC and share her gifts in the area of production. She currently teaches dance at Drew-Freeman Middle School and Jyla's Studio of Dance in Suitland, Maryland and looks forward to continuing to spread the power of the performing arts through her craft.



Danielle Mastricola (Company Manager)

Danielle Mastricola has been involved in the dance field since she was three years old. Her time as a performer led her to receive her Bachelor of Fine Arts in dance from the University of

Illinois at Urbana-Champaign and has currently brought her to New York City, where she actively participates in the dance field through company management work, being an arts advocate, and supporting fellow dancers. Her administrative work has led her to work at Jacob's Pillow Dance Festival and collaborate with the American College Dance Association, Bates Dance Festival, Celebrity Series Boston, and The Kennedy Center. Having a background in dance, Danielle was also drawn to

teaching yoga and has her 500-hour yoga teacher certification. With this certification she spends her time teaching yoga at a private school and running her own private yoga business for clients in New York. She is a masters student at Teachers College Columbia University working toward her degree in neuroscience and education centered around the intersection between dance education, neuroscience, and mental health advocacy.



Amara Payton McNeil (Lighting Director)

Amara Payton McNeil is a New York-based, Hartford-raised, theatrical lighting designer. She holds a BA in theater from Fordham University and was the 2023 Howell Binkley Fellow. As

a visual storyteller, she aims to create an immersive experience for the audience, using vibrant colors and dynamic angles to bring texture to the stage. She enjoys work created for and by the black community and projects that blend performance and culture. Broadway credits include *Come From Away* second national tour (Asst. LD), *The Wiz* pre-Broadway tour (HBB Fellow), *Once Upon A One More Time* (LD Intern), and *Parade* (LD Intern). Regional/off-Broadway credits include *Fabulation, or...* (LD at The Billie Holiday), *Like They Do In The Movies* (Assoc. LD at PAC NYC), *Teeth* (Asst. LD at Playwrights Horizons), *Vegan Chitlins* (LD at The Flea), *Hair* (Assoc. LD at Two River), *The Untitled, Unauthorized Hunter S. Thompson Musical* (ALD at La Jolla Playhouse).



Samy Ravs (On Site Audio Engineer)

Samy Ravs is a DJ/Engineer/Creative based out of the Bronx, New York. He brings a positive energy and good vibes to every space and is dedicated to the

art of show business. When he isn't working in the theatre space, he is playing tunes for weddings, barbecues, and galas. Find him @dj.samuelitobx on IG.

serena wong (Lighting Designer)

serena wong is a Brooklyn-based freelance lighting designer for theatre and dance. Her designs have been seen at Lincoln Center, Fall For Dance at City Center, Danspace, and Jacob's Pillow Dance Festival, among others in the US and abroad. Most recently she has designed for choreographers LaTasha Barnes, Gemma Bond, Caleb Teicher, Leonardo Sandoval, and Jaamil Olawale Kosoko. She enjoys biking, baking, and pottery.

Laura Colby (Managing Producer)

Laura Colby, recipient of NAPAMA's 2016 Liz Silverstein Award, is founder and President of Elsie Management, an agency representing a global roster of contemporary dance, theatre, and circus companies. She began her work with LaTasha Barnes in August of 2021 and is honored to be representing *The Jazz Continuum*.

EXCLUSIVE REPRESENTATION

Elsie Management
Laura Colby, President
Anna Amadei, Vice President
www.elsieman.org
TEL: 718.797.4577

LAND ACKNOWLEDGMENT

The University of Illinois System carries out its mission in its namesake state, which includes the traditional territory of the Peoria, Kaskaskia, Piankashaw, Wea, Miami, Mascoutin, Odawa, Sauk, Mesquaki, Kickapoo, Potawatomi, Ojibwe, Menominee, Ho-Chunk, and Chickasaw Nations. These lands continue to carry the stories of these Nations and their struggles for survival and identity.

As a land-grant institution, the University of Illinois has a particular responsibility to acknowledge the peoples of these lands, as well as the histories of dispossession that have allowed for the growth of this institution. We are also obligated to reflect on and actively address these histories and the role that this university has played in shaping them.

This acknowledgment and the centering of Native peoples is a start as we move forward.

Krannert Center affirms the commitment by the university to move beyond these statements, toward building deeper relationships and taking actions that uphold and preserve Indigenous rights and cultural equity.

As we gather to experience this performance, we have an opportunity to reflect on the ways that systems of oppression have shaped our society. We can work together to create systems that support human dignity, establish equity, strengthen cross-cultural relationships, and draw upon the creative capacity of all people that make up this community, state, nation, and world.



INVEST IN THE FUTURE OF THE ARTS

Support Krannert Center today



MAKING IT POSSIBLE

Support Krannert Center Today

Where Creativity Ignites Passion

Krannert Center is committed to providing an inclusive space where students, community members, visiting artists, and friends can gather for enriching performances and cultural experiences. The support of our donors and friends enables the Center to produce creative programming that ignites a passion for the arts that is invaluable.

Together, we can ensure that students and the greater community continue to have access to transformative performing arts experiences.

Please consider making a gift to Krannert Center today. With your help, we can sustain the high level of excellence you have come to expect, while strengthening the lasting impact of the Center's work.

You make it possible.

Make Your Gift Today

advancement@krannertcenter.illinois.edu • 217.333.6700

KrannertCenter.com/Give

Would you like to make Krannert Center part of your legacy?

Contact Cheryl Snyder (217.333.2533 | casnyder@illinois.edu) or Bethany Whoric (217.300.6042 | bbwhoric@illinois.edu) to learn more about making a planned gift to Krannert Center for the Performing Arts.

KRANNERT CENTER PHILANTHROPY AND ADVOCACY

Krannert Center's dedication to the celebration, exploration, and cross-pollination of the arts is advanced through these special programs. Donors who champion such work make it possible for more people in our community to participate in life-affirming experiences.

2024-2025 ADVANCEMENT COUNCIL

This passionate group of arts advocates assists Krannert Center staff in expanding the Center's leadership and financial resources.

Co-Chairs:

Michelle Gonzales &
Shandra Summerville

Ghazala Ahmad

Jill Clements

Terry & Barbara England

Susan & Michael Haney

Lisa & Mark Klinger

Leonard (Len) Lewicki

Marina & Nenad

Marjanovic

Susan & Brendan

McGinty

Tracy Parsons

Susan & Sam Reese

2024-2025 KRANNERT CENTER YOUTH SERIES

The Youth Series features daytime performances, online media created by performing artists, and educational activities designed especially for pre-K through high-school-aged students. Children who participate learn to appreciate the performing arts, gain knowledge, build social skills, and integrate live performance experiences into classroom work. Thank you to our Youth Series sponsors.

Ann H. Bender Youth
Series Endowment

The Susan Sargeant
McDonald Endowed

Fund for Youth

Programming (Suzi

was the founder/

developer of the

Krannert Center Youth

Series)

Bernard and Prudence

Spodek Endowed

Fund

Illinois Arts Council
National Endowment

for the Arts

Judith Bojar

Susan & Michael Haney

Brenda & Stephen Pacey

Jill & James Quisenberry

Linda & Ronald Roaks

Carol & Ed Scharlau

Jane & Christian Scherer

Anne & David Sharpe

2024-2025 CAMPAIGN FOR YOUNG AUDIENCES

Through the Campaign for Young Audiences, students at the U of I enjoy \$10 tickets for nearly every event presented at Krannert Center while other college students and children receive significant discounts.

Campaign for Young Audiences Lead Sponsors



Phyllis Robeson & Family

Campaign for Young Audiences Sponsors

Susan & Michael Haney

Fund for Young

Audiences

Gertrude Brokaw

McCloy Endowment

Clarette & Zvi Ritz

UpClose Marketing

and Printing

2024-2025 SEASON-LONG SPONSOR



A. Mark Neuman

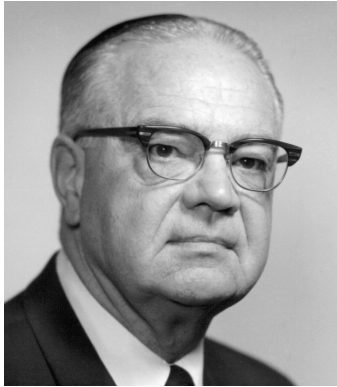
80 years ago, in 1945, members of the United States Armed Forces liberated my father, Rabbi Isaac Neuman, from Ebensee, Austria.

If US soldiers had not been there, I would not be here.

If you'd like to learn how you can become a sponsor, please contact Krannert Center Advancement at 217.333.6700 or advancement@krannertcenter.illinois.edu.

KRANNERT SOCIETY

The University of Illinois, the College of Fine and Applied Arts, and Krannert Center are profoundly grateful for the commitment of Krannert Society members. Through donations, pledges, and residual gifts of \$1 million or more, these open-hearted visionaries help build a thriving community and encourage cross-cultural understanding. Their support sustains the extraordinary vision of Herman and Ellnora Krannert to create a vibrant gathering place like no other.



VALENTINE JOBST III (1904-1993)
March 1994



CLAIR MAE ARENDS (1912-2000)
G. WILLIAM ARENDS (1914-1997)
March 2000



MARILYN PFLEDERER ZIMMERMAN
(1929-1995)
VERNON K. ZIMMERMAN
(1928-1996)
November 2003



HELEN FARMER
JAMES FARMER (1931-2020)
April 2014

FOELLINGER SOCIETY

Demonstrating their steadfast dedication to the arts, members of the Foellinger Society have donated or pledged \$500,000 to \$999,999. Because of their generosity, everyone in this community can unite in joyful and engaging experiences. These magnanimous arts lovers celebrate the spirit of Helene Foellinger, whose memorial gift honored her sister, Loretta Foellinger Teeple, and established the Marquee Performance Endowment.



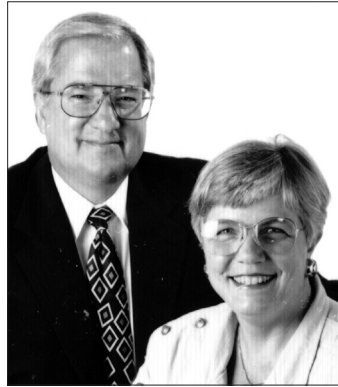
AVIS HILFINGER (1915-2004)
DEAN HILFINGER (1912-2006)
April 2000



KENNETH ANDERSEN (1933-2020)
MARY ANDERSEN
August 2009



CAROLYN G. BURRELL
April 2012



CAROLE & JERRY RINGER
April 2014



EDITH ANN STOTLER
(1946-2022)
August 2017



K. SARAH SPAULDING
(1930-2022)
Feb 2017



**JANE BUFORD SCHERER & CHRIS
SCHERER**
June 2022



DENA & JIM VERMETTE
June 2022

IKENBERRY SOCIETY

University of Illinois President Emeritus and First Lady Stan and Judy Ikenberry have long demonstrated their love for the arts and their deep commitment to enhancing learning experiences for all University of Illinois students. Krannert Center gratefully acknowledges their steadfast support by introducing the Ikenberry Society to recognize donated gifts or pledges of \$250,000 to \$499,999.



JUDITH & STANLEY IKENBERRY
September 2014



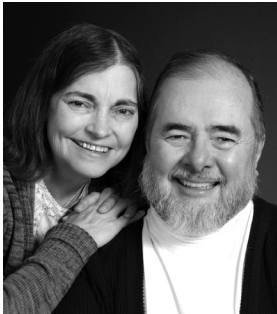
JERALD WRAY & DIRK MOL
March 2016



DAVID A. KROOKS
August 2016



HELEN RICHARDS
(1936-2023)
DANIEL RICHARDS
June 2016



HOLLY & KURT HIRCHERT
February 2017



ANONYMOUS
May 2018



JOAN & PETER HOOD
November 2018



SUSAN & MICHAEL HANEY
April 2019



**LYNN WEISEL WACHTEL
& IRA WACHTEL**
June 2019



JOHN & KAY SHANER
July 2019



LEONARD (LEN) LEWICKI
May 2021



**TIMOTHY TEMPLE & JERRY
CARDEN**
June 2022



FRAN & MARC ANSEL
June 2022



TRENT A. SHEPARD
September 2023

COLWELL SOCIETY

Dr. John B. Colwell, Pauline Groves Colwell, and R. Forrest Colwell provided critical funding for the Marquee Performance Endowment, and the Colwell Society gratefully acknowledges their invaluable assistance. Members have donated or pledged \$100,000 to \$249,999 for celebrating, preserving, and exploring the arts right here and around the globe.



DOLORIS DWYER
(1918-1997)
April 1996



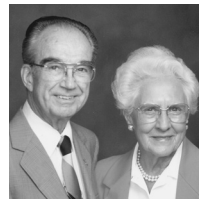
EMILY GILLESPIE
(1909-2000)
JAMES GILLESPIE
(1905-1999)
December 1996



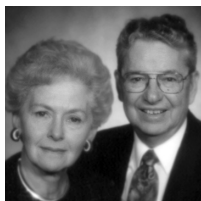
ROSANN NOEL
(1932-2018)
RICHARD NOEL
April 1997



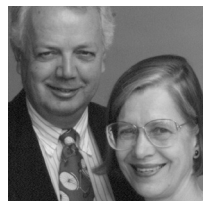
JAMES W. ARMSEY
(1917-2008)
BETH L. ARMSEY
(1918-2019)
February 1998



LOIS KENT
(1912-1999)
LOUIS KENT
(1914-1994)
October 2000



JUNE SEITZINGER
(1928-2020)
GROVER SEITZINGER
(1925-2019)
September 2001



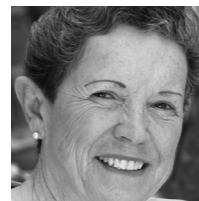
RICHARD MERRITT
(1933-2005)
ANNA MERRITT
November 2006



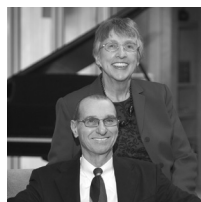
JOHN PFEFFER
(1935-2017)
ALICE PFEFFER
November 2006



ANONYMOUS
November 2006



LINDA M. MILLS
(1940-2006)
October 2007



JUDITH LIEBMAN
(1936-2023)
JON LIEBMAN
January 2008



MICHAEL CARRAGHER
(1946-2009)
September 2008

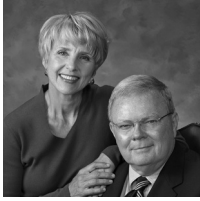


VIRGINIA R. IVENS
(1922-2008)
February 2009

THE SUSAN SARGEANT MCDONALD ENDOWED FUND FOR YOUTH PROGRAMMING
Suzi was the founder/ developer of the Krannert Center Youth Series
July 2010



MISAHO & RICHARD BERLIN
October 2010



**DIANA & WARD
MCDONALD**
March 2011



**GRACE & JOHN
MICETICH**
March 2011



JO ANN TRISLER
(1946-2010)
November 2011



LEA GIESELMAN
(1932-2014)
BOB GIESELMAN
(1932-2015)
April 2013



**JULIE & NATHAN
GUNN**
April 2014



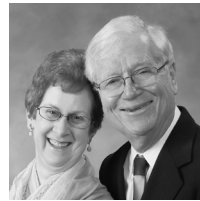
MICHAEL SWINDLE
April 2014



ANONYMOUS
November 2015



LINDA WEINER
(1944-2021)
BARRY WEINER
February 2017



**ANNE MISCHAKOFF
HEILES & WILLIAM
HEILES**
May 2017



**JILL & JAMES
QUISENBERRY**
May 2017



DALE STEFFENSEN
(1922-2018)
**MARGARET
STEFFENSEN**
(1936-2024)
June 2017



**CECILE & IRA
LEBENSON**
December 2017



BURT SWANSON
(1939-2020)
IRIS SWANSON
December 2017



**TERRY & BARBARA
ENGLAND**
April 2018



**PHYLLIS ROBESON
& FAMILY**
February 2019
KYLE ROBESON
(1929-2021)



**JAMES R. FRAME
& CANDACE PENN
FRAME**
April 2019



**MICHAEL &
MARGARET ROSSO
GROSSMAN**
July 2019



**PATRICIA & ALLAN
TUCHMAN**
April 2021



**VICTOR FELDMAN
(1935-2018)
JUDITH FELDMAN
(1938-2021)**
September 2021



**SUSAN & RICHARD
SCHNUER**
November 2021



**JUDITH & RICHARD
KAPLAN**
February 2022



**KATHRYN I. SEYBERT
& MICHAEL J.
ANDRECHAK**
June 2022



**PATRICIA PLAUT &
KENNETH SUSLICK**
October 2022



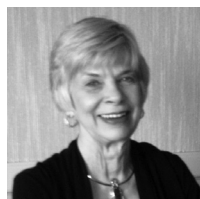
**RICHARD & JAYNE
BURKHARDT**
January 2023



**SELMA K. RICHARDSON
(1931-2019)**
March 2023



**WILLIAM K. ARCHER
(1927-1997)
FOROUGH ARCHER**
July 2023



**KENNETH BENGOCHEA
(1937-2022)
NANCY L. JOHNSON**
September 2023

Donations by society members include estate gifts; outright donations; charitable gift annuities; charitable remainder trusts; gifts of real estate, insurance, and securities; and pledges fulfilled over a period of five years. To explore how you can create your own lasting legacy, contact us at 217.333.6700 or advancement@krannertcenter.illinois.edu.

2024-2025 MARQUEE CORPORATE & COMMUNITY SPONSORS

Corporate and community support—both cash and in-kind—deepens Krannert Center’s capacity to inspire public discourse, communal respect, and collective joy. Please join Krannert Center in thanking the following corporate and community sponsors for their support of Krannert Center performances and initiatives.

Corporate & Community Platinum Sponsors

(\$30,000 OR MORE)



HOTEL



SURFACE 51

Corporate & Community Lead Gold Sponsors

(\$20,000-\$29,999)



Corporate & Community Gold Sponsors

(\$10,000-\$19,999)



Corporate & Community Silver Sponsors

(\$5,000-\$9,999)

Adams Outdoor Advertising
Chambanamoms
Champaign-Urbana Mass Transit District (MTD)

Christie Clinic
Kessler Optical
Smile Politely

Corporate & Community Bronze Sponsors

(\$2,500-\$4,999)

BodyWork Associates
Carter's Furniture
Comfort Suites
Experience Champaign-Urbana

Glenn Poor's Audio & Video
Illini Studio
The Piano Shop
WEFT 90.1 FM
Willard Airport

TO JOIN THIS POWERFUL NETWORK of like-minded professionals while receiving guaranteed visibility and marketing benefits, visit KrannertCenter.com/Give or contact Bethany Whoric at 217.300.6042 or bbwhoric@illinois.edu.

2024-2025 GRANTS



DORIS DUKE
CHARITABLE FOUNDATION

DORIS DUKE CHARITABLE FOUNDATION

Endowment support from the Doris Duke Charitable Foundation continues to enhance Krannert Center's presentation of diverse, world-class national and international visiting artistry; supporting the creation of new work; and increasing engagement and collaboration across campus.



ILLINOIS ARTS COUNCIL

The Illinois Arts Council Agency provides general programming support to ensure that audiences of all ages have direct access to world-class theatre, dance, and music.

THE AUGUSTINE FOUNDATION

THE AUGUSTINE FOUNDATION

The Augustine Foundation provides continued major support for ELLNORA | The Guitar Festival.



THIS PROJECT FUNDED BY
STUDENT SUSTAINABILITY COMMITTEE

THE STUDENT SUSTAINABILITY COMMITTEE

The Student Sustainability Committee provided funding for the Krannert Center Audiences Lighting Retrofit Project, which continues to increase energy efficiency, decrease labor requirements, and improve safety conditions.



Center for
Advanced
Study

GEORGE A. MILLER ENDOWMENT PROGRAMS COMMITTEE

The George A. Miller Endowment Programs Committee supports CultureTalk and other special collaborative projects.

MARQUEE PATRON SPONSORS

Krannert Center is grateful for the passion and commitment of the following individuals whose gifts support the expansive range of experiences offered at Krannert Center: formative moments for tomorrow's global leaders, performances that comfort and transform, opportunities to create and enjoy groundbreaking work, engagement activities that offer self-discovery and hope, architectural treasures to delight the senses, and remarkable moments to foster lifelong memories. **If you'd like to learn more about how to become a sponsor, please contact Krannert Center Advancement at 217.333.6700 or advancement@krannertcenter.illinois.edu.**

Season-Long Patron Sponsor

(\$25,000 OR MORE PER SEASON)

A. Mark Neuman

Endowed Underwriters

(\$10,000 OR MORE PER EVENT)

Clair Mae & G. William Arends
Avis & Dean Hilfinger
Valentine Jobst III
Edith Ann Stotler
Marilyn Pflederer & Vernon K.
Zimmerman

Endowed Sponsors

(\$5,000-\$9,999 PER EVENT)

Beth & James Armsey
Doloris Dwyer
Terry & Barbara England
Joan & Peter Hood
Lois & Louis Kent
Carole & Jerry Ringer
Sarah K. Spaulding
Bernard and Prudence Spodek
Endowed Fund

Endowed Co-sponsors

(\$2,500-\$4,999 PER EVENT)

Ann H. Bender Youth Series
Endowment
Victor & Judith Feldman
Lena & Bob Gieselman
Emily & James Gillespie
Margaret Rosso Grossman & Michael
Grossman
Susan & Michael Haney
The Susan & Michael Haney Fund for
Young Audiences
Virginia R. Ivens
Kathryn & Stephen Marshak

The Susan Sargeant McDonald
Endowed Fund for Youth
Programming (Suzi was the
founder/developer of the Krannert
Center Youth Series)

Joanne & Charles McIntyre
Anna Merritt
Mildred Maddox Rose
June & Grover Seitzinger
Jo Ann Trisler
Pat & Allan Tuchman

Patron Underwriters

(\$10,000 OR MORE PER EVENT)

Jayne & Richard Burkhardt Jr

Patron Sponsors

(\$5,000-\$9,999 PER EVENT)

Channing Brown
Jayne & Richard Burkhardt Jr.
Anastasia Economy
Shirley Soo & Matthew Gorman
Anne Mischakoff Heiles & William
Heiles
Marilyn & Don Krummel
Cecile & Ira Levenson
Jon Liebman
Carole & Jerry Ringer
Carol & Ed Scharlau
Patricia Plaut & Kenneth Suslick
Pamela & Michael VanBlaricum
Barry Weiner
Susan & Robert Welke

Patron Co-sponsors

(\$2,500-\$4,999 PER EVENT)

Ghazala Ahmad
Frances & Marc Ansel
Dianna Armstrong

Sherry & Nelson Beck
Carol Berthold
Carolyn Burrell
Timothy Temple & Jerry Carden
Harriet & Herschel Cline
Emmie Fisher
Melanie Loots & George Gollin
Shirley Soo & Matthew Gorman
Susan & Michael Haney
Anne Mischakoff Heiles & William
Heiles

Marianne Kalinke
Judith & Richard Kaplan
Leonard (Len) Lewicki
Ann & Stephen Long
Gigi & Frank Miles
Martha & Thom Moore
Jerald Wray & Dirk Mol
Deb & Ty Newell
Claudia Reich & Gary Olsen
Brenda & Stephen Pacey
Linda & Ronald Roaks
Deborah & Stephen Rugg
Richard & Susan Schnuer
Carol & Ed Scharlau
Anne & David Sharpe
Diana Sheets
Mary Schuler & Stephen Sligar
Nancy & Edward Tepper
Pat & Allan Tuchman
Hana & David Wickersheimer
Rebecca & Paul Wigley
Sarah Wigley

HELP ENSURE THE IMPACT OF THE

ARTS for future generations by becoming
a donor today. Visit KrannertCenter.com/Give, contact us at 217.333.6700 or
advancement@krannertcenter.illinois.edu.

MARQUEE CIRCLE AND LOOP MEMBERS

We gratefully acknowledge these individuals and businesses for their generosity and commitment to the arts. Their support enabled the Center to welcome back in-person audiences for Music, Theatre, Dance, and visiting artist productions this past season. Krannert Center continues to make accessibility improvements, co-commission works to help support artist partners, and focus on engagement work within the community. If your membership has lapsed and you'd like to renew, please contact Krannert Center Advancement at 217.333.6700 or advancement@krannertcenter.illinois.edu.

[LIST CURRENT AS OF AUGUST 15, 2024]



Ghazala Ahmad
Melissa Huff & Richard Alkire*
Walter Alspaugh
Mary & Kenneth Andersen*
Ruth & James Anderson
Sally Anderson
Jean Manning & Alan Andreasen
Kathryn Seybert & Michael
Andrechak
Frances & Marc Ansel*
Dianna Armstrong*
Barbara E. Barnes
Paula & Clifford Barnes
Tangül & Tamer Basar
Jeanette & John Beck
Sherry & Nelson Beck
Carol & Carl Belber
Dorothy Bell
Erica & Alessandro Bellina
Carol Berthold
Doug Blair
Mary Blair
Arlene & James Borbely
Amy Mueller & James Brennan
Lois & Jack Brodsky by Daniel
Brodsky
Abbie & Mike Broga
Channing Brown
Elizabeth & Michael Brunk
Annette & John Buckmaster
Jayne & Richard Burkhardt Jr.
Carolyn G. Burrell

Ann & Roy Campbell
Timothy Temple & Jerry Carden
Beth & David Chasco
Kathleen & Felix Cimasky
Carol & John Clavadetscher
Harriet & Herschel Cline
Carol & Willis Colburn
Casey Sutherland & Linda
Coleman
Tina & John Colombo
Jongin Craggs
Deborah Day
Judith & Jack DeAtley
Elizabeth Cardman & Paul
Debevec
Richard DeLong
Jo Ellen DeVilbiss
Dixie & Evan Dickens*
Anastasia Economy
Matthew Nelson & Kim Eilts
Ann Einhorn
Lorene & Paul Ellinger
Anne Ellison
Jo & Thomas Emerson
Terry & Barbara England*
Karen & Michael Folk
Sue Anne Fischer
Jill & Rusty Freeland
Beverly & Michael Friese
Michael Fuerst
Nancy & Bert Fuller
Rita Garman
Victoria Christensen & Gary
Gladding
Melanie Loots & George Gollin*
Shirley Soo & Matthew Gorman
Diane Gottheil

Ondine & George Gross
Margaret Rosso Grossman &
Michael Grossman
Julie & Nathan Gunn
Susan & Michael Haney
Sharon & Terence Harkness
Kathlene & Ron Harshman
Gözen & Chris Hartman*
Melissa & Peter Hartman
Kathleen Harvey
Clare & Alan Haussermann
Jane Trishman Heaton
Barbara & John Hecker
Anne Mischakoff Heiles & William
Heiles
Jan & Bruce Hinely
Bernadine & Charles Hines
Holly & Kurt Hircher
Kathryn Rybka & Darrell
Hoemann Photography
Janice Bahr & Erwin Hoffman
Joan & Peter Hood*
Cheryl Hughes
Mary-Alayne & Robert Hughes
Peggy & Christopher Huson
Ingrid & Bruce Hutchings
Judith & Stanley Ikenberry*
Laura & Gale Jamison
Michelle Sanden Johlas & John
Johlas
Nancy Johnson
Ronald Johnson
Joan Volkmann & John Jones
Patricia Jurgens
Patricia & Peter Kale
Maxine Kaler
Marianne Kalinke

Judith & Richard Kaplan
Paula Kaufman
Therese & Lawrence Kessler
Josephine & Douglas Kibbee
Brenda & Peter Kimble
Jennifer Durham King & Roy King
Lisa & Mark Klinger
Sharon Pomerantz & Howard
Korey
Wynne Sandra Korr
Sheila & Philip Krein
David A. Krooks
Marilyn & Don Krummel
Nancy Parker & James Kuklinski
Cecile & Ira Levenson*
Brenda Lerner-Berg
Leonard (Len) Lewicki
Jon Liebman
Ann & Stephen Long
Brenda & Morgan Lyng
Marina & Nenad Marjanovic
Kathryn & Stephen Marshak
Marilyn Marshall
Betsy Bachmann & Rebecca
McBride
Erica McClure
Susan & Brendan McGinty
Charles J. & Joanne J. McIntyre
by Family
Mrs. Jack H. McKenzie
Anna Merritt*
Grace & John Micetich
Theresa & Bruce Michelson
Gigi & Frank Miles
Elizabeth & George Miley
Sallie & Norman Miller
Jerald Wray & Dirk Mol*
Martha & Thom Moore*
Armine & Rudolf Mortimer
Jane & Walter Myers
Janet & Douglas Nelson*
A. Mark Neuman
Ty & Deb Newell
Richard Noel
Jeanette Nugent

Claudia Reich & Gary Olsen*
Brenda & Stephen Pacey
Donald Perrero
Alice Pfeffer*
Kathleen A. Holden & David
Prochaska
Jill & James Quisenberry*
Gloria Rainer
Arlene & Julian Rappaport
Susan & Sam Reese
Karen & Michael Retzer
Marlyn Rinehart
Carole & Jerry Ringer*
Clarette Ritz
Linda & Ronald Roaks
Phyllis Robeson
Lisa & Eric Robeson
Anne Robin
Julia & Gene Robinson
Taya & Mike Ross
Deborah & Brian Ruddell
Deborah & Stephen Rugg*
Shozo Sato
Carol & Ed Scharlau*
Jane & Christian Scherer
Susan & Richard Schnuer
Kim Robeson-Schwenk & Dean
Schwenk*
Susan & Ronald Serfoss
Kay & John Shaner
Anne & David Sharpe
Diana Sheets
Trent Shepard
Janice Sherbert
Jan & David Sholem
Diane & Richard Siemer
Birute & Vaidotas Simaitis
Patricia & Charles Simpson
Mary Schuler & Stephen Sligar
Audrey Ishii & Charles Smyth
Prudence Spodek
Cecile Steinberg
Margaret Stillwell
Patricia Plaut & Kenneth Suslick
Iris Swanson

Michelle & Jason Swearingen
Bonnie & Bob Switzer
Nancy & Edward Tepper
Shirley & Arthur Traugott*
Carolyn Casady-Trimble & Ralph
Trimble
Devon Hague & Dallas Trinkle
Pat & Allan Tuchman*
Carl L. Vacketta
Pamela & Michael VanBlaricum
Stella B. & C. Max Volk
Lynn Weisel Wachtel & Ira
Wachtel
Chip Walgren
Paula Watson
Tracy McCabe & Fabien Wecker
Kathy & Al Wehrmann
Barry Weiner
Susan & Robert Welke
Hana & David Wickersheimer
Rebecca & Paul Wigley
Sarah Wigley
Karen & William Wilkinson
Sarah & Charles Wisseman
Margaret Yeh
Elaine & Harold Yoon
Joan & Theodore Zernich
And gifts from four Anonymous
donors

Memorial Gifts to the Marquee Circle

Arthur Chitz & Stephen Levinson
Diana Sheets
Robert L. Foote
Cheryl Hughes
Karen & Michael Retzer
Charles J. & Joanne J. McIntyre
Elizabeth Kaufman
Amy A. Rappaport-Lo
Arlene & Julian Rappaport
Atron Regen
Bernadine & Charles Hines

*Former member of the Krannert Center Advancement Council



Pat Januszki & Dick Adams
Nadja & Carl Altstetter
Ruth Wyman & Juan Alvarez
Ellen & Gene Amberg
Susan & Donald Armstrong
Carol & Richard Arnould
Grace Ashenfelter
Keely Ashman
Paul Blobaum & Dennis Azuma
Judith Bach
Susan & G. Tim Bachman
Meredith & Joseph Barnes
Sandra & Ritchie Barnett
Maeline & Robert Barnstable
Jim Barrett
Jane & Peter Barry
Kathleen & S. Eugene Barton
Ronald & Susan J. Bates
Starley Baxter
Norma Bean
Mary Beastall
William Bechem
Nora Few & Douglas Beck
Susan & Wayne Bekiares
Meredith Belber
Kathleen & John Lansingh
Bennett*
Laura & Kenneth Berk
Carol & Richard Betts
Sue Biddle
Cynthia Biggers
Mary Ann Boggs
Tamara Bouseman
Kathryn & Van Bowersox
Kelly Bradham
Hannah & Justin Brauer
M. Q. Brewster
Susan Stock & Anthony Brienza
Kathleen Brinkmann
Rebecca Brown
Rosemary Buck
Donald Buss
Christine & Edwin Cahill
David Campbell

Helen & Andreas Cangellaris
Carol Lite & Kenneth Cantor
Donna & Steven Carter
David Ceperly
Elaine Bearden & Craig
Chamberlain
Sheryl & Robert Chambers
Alexander Chang
Candice Chirgotis
Maureen & Neal Cohen
Kristin Patton & John Coleman
Janet & William Coombe
Nancy & Fred Coombs
Brad & Meggin Cooper
Marguerite Courtright
Kathleen Vance & Charles
Cowger
Nancy Creason
Brian Cudiamat
Barbara Curtis
Elizabeth & Robert Czyns
Sandra Darby
Millie Davis
Patricia & Robert Davis
Janis Chadsey & Al Davis
Amy Hassinger & Adam Davis
Susan Meinkoth & Peter Davis*
Lucia & Ron Deering
Nancy & Harold Diamond
Terri Dodson
Victoria Pifalo & Kieran Donaghy
Jean Driscoll
Diane Durbin & David Tjaden
Emily Edwards
Joyce Eisenstein
Sandra Ahten & Kevin Elliot
Ellen & Douglas Elrick
E. R. Ensrud
Tara Toren-Rudisill & Dustin
Erickson
Mary Ann Espeseth
Lea Mellom & Nicholas Fakiis
Eleanor & Walter Feinberg
Rebecca Netti-Fiol & Stephen
Fiol
Catherine Flood
Kristin & James Flores
Rose Marie & Brendan Foley
Barbara Ford
Tracey Ford
Robin & Robert Fossum**
Shari & Ben Fox

Carrie & Stephen Franke
Natalie Frankenberg
Karen & Alain Fresco
Barbara Fuller-Curry
Michael Huges & Dr. Marty Fung
Margie Harris & Richard Furr
Pamela & Samuel Furrer
Janet Kalmar & Benjamin
Galewsky
Laurie Rund & Rex Gaskins
Evelyn & Joseph Gill
Alquin Gliane
Nirmal Gokarn
Michelle Gonzales
Nancy Goodall
Rose & William Goodman
Miranda Machula & Christopher
Green
Karl Greve
Kimiko Gunji
Lila Sullivan & Don Gunning
Rosangela Silva & Ibrahim Hajj
Barbara Danley & Robin Hall
Karen Greenwalt & David
Hamilton
Karen & David Harris
Cynthia Capek & Edward Harvey
Jenny & Dick Harvey
Dauna Hayman
Christine & Bruce Hegemann
John Heiligenstein
Jannette & Donald Helfrich
Marne Helgesen
Susan & Edwin Herricks
Beverly Herzog
Shawna Scherer & Steve Higgins
Lila & Larry Hill
Jennifer & Paul Hixson
Zarina & Hans Hock
Kay Hodson
Marilee & Robert Hoffswell
Jean Holley
Edit & Leland Holloway
Jessie Houston
Kimberly & Mark Hubbard
Gail Hug
Brady Hughes
Ann Roseman & Bob Huhn
Rhonda Hunter
Michael Lambert & Timothy
Hutchison
Andrew Ingram

Elizabeth & Henry Jackson
Janet Elaine Guthrie & Mark
Jaeger
Helen & Francis Jahn
Leah & Michael Jay
Bruce Johnson
David Johnson
Elizabeth Johnston
Patricia & John Jordon
Debra Karplus
Lizbeth Katsinas
Benita & John Katzenellenbogen
Laura & Don Keefer
Patrick Keenan
Megan & David Kees
Beverly & George Kieffer
Anna Koem & Jin Kim
Janice Kimpel
Margaret Patten & Todd Kinney
Jeffrey & Patricia Kirby
Gerri Kirchner
Julia Kling
Patricia & Frank Knowles
Laura & Kipling Knox
Christa Knust
Janice Hiland & Stephen
Kolderup
Marilyn Kohl
Antje & Edward Kolodziej
Jean & Thomas Korder
Shari L. Kouba
Joan Kozoll
Elizabeth & David Krchak
Curtis Krock
Carrie & Richard Kubetz
Judith Kutzko
James Land
Annette & Charles Lansford
Casandra & Kenneth Larvenz
Bernadette & Gary Laumann
Kathy Lee
Cecilia & Robert Lentz
Faye Lesht
Janet & David Leslie
Lil Levant
Daniel Leward
Patricia & Vernon Lewis
Mary & Louis Liay
Larry Lister
Xinran Liu
Barbara & James Linder
Jaclyn & Jeffrey Loewenstein

Lori & James Lohrberg
Cynthia & Michael Loui
Margaret & Erick Loven
Brandi & Jason Lowe
Ann Lowry
Robin Luebs
Marguerite & Walter Maguire
Jeanne Connell & Joseph
Mahoney
Tracy & J. Victor Malkovich*
S. Pauline & Mankin Mak
Jeannine Malmsbury
Beth Martin
Mairead Martin
Leslie & Gary Mason
Charles J. & Joanne J. McIntyre
by Family
Jane & Michael McCulley
Alina Reeves & Joseph Meier
Carol Meitz
Christen Mercier
Sharron & David Mies
Fadi Mikhail
Charlotte Mattax Moersch &
William Moersch
Linda & Mark Moore
Liz & Dan Morrow
Marie Mueller
Diane & Michael Murphy
Lucy Miller Murray & Martin L.
Murray
Jane & Alan Nathan
Carol Neely
Jeffrey Nelson
Eve Harwood & Mark Netter
Stephanie Nevins
Peter Newman & Jerome Ng
Jack Nibling
Lynda Dautenhahn & Lee
Nickelson
Matthew Noel
Holly Nordheden
Julie O'Neill
Donna & Paul Offenbecher
Julia & David Ohlsson
Mary & Robert Oliver
Janice Olson
David Ostrodka
Elaine Fowler Palencia & Michael
Palencia-Roth
Martha Palit
Marjorie Perrino

Aiko Perry
Jaya Yodh & Curtis Perry
Jean & G. David Peters
Linda & Lyn Peterson
Constance & James Phillips
Mary Phillips
Laura & Mark Pils
Jan Porterfield-Keenan
Patricia Powell
Nancy & Lester Rabe
Japhia Jayasingh Ramkumar &
Davendra Ramkumar
Lois & Edward Rath
Judith Rathgeber
Margaret A. Reagan
Deborah & Michael Reagan
Bruce Zimmerman & Maureen
Reagan
Lisa Courtney & Charles Reifsteck
Julie & William Rettberg
Connie Rieken
Louise Rogers
Christie Roszkowski
Thomas Rozanski
Katherine Ryan
Lynn Ryle
Lynne & Gregory Sancken
Beverly Sanford
Joan Farwell-Sargent & Michael
Sargent
Mary Jane & Todd Schermer
Susan K. & Paul K. Schlesinger
Grace & William Schoedel
Kathleen & Mark Schoeffmann
Dawn Schultz
Patricia Fowler & Jose Schutt-
Aine
Molly & John Scott
Judy & John Sehy
Rochelle Sennet
Kay & Gary Senteney
Jon Seydl
Crystal & Michael Shaw
Lily Siu
Elzbieta & Piotr Skorupa
Elon Slaughter
Donna Hacker Smith
Deborah & James Smith
Marianne Abbey-Smith &
Campbell Smith
Elyse Rosenbaum & Robert Smith
Avigail & Marc Snir

Melissa Breen & Cheryl Snyder
Penelope & Anthony Soskin
Nancy Sottos
Becky Wauthier* & Gary Spezia
Peter Cohen & Jeffrey Sposato
Elizabeth Stern
Deborah Stewart
Gary Stitt
Andrea Beller & Kenneth
Stolarsky
Heather Stone
Sheila Sullivan
Tara & Jeff Swearingen
Kathryn & Jonathan Sweedler
Curtis Stephens & Alethea Taylor
Kristine Light & Donald Taylor
Wes Taylor
Diane Durbin & David Tjaden
Sharon & Ross Toedte
Joan & Walter Tousey
Susan & John Townsend
Jonathan Trupin
Joan & Stanley Tunnell
Grant Ullrich
Candice & Frederick Underhill
Kathryn & Alfonso Valdes
Linda & R. E. Veltman
Julie Mason-Vermeulen & Paul
Henri Vermeulen
George Vickery
Yvonne & Joseph Vitosky
Michael Vitoux
Shirley Walker
June & Ashton Waller
Diane & James Wardrop
Mari McKeeth & Heidi
Weatherford
Catherine Webber
Ann & Ronald Webbink
Carl Pius Weibel
Cecelia & Morton Weir
Elizabeth Weiss
Michelle & Michael Wellens
Hannah Werner
Glennys Mensing & Roger West
Deborah & Michael Westjohn
Karen & John Whisler
Donna & Thomas Williams
Robert Malik Winter by
Sarah Hasib, Pete & Molly
Yunyongying
Deanna & Kurt Wisthuff

Susan & Mark Wisthuff
Ava & Richard Wolf
Irene & Stanley Wu
Mary & Gene Wurth
Ruth Wyman
Janie & Ehud Yairi
Wendy & Glen Yang
Rittchell & Peter Yau
Sally & Stephen Zahos
Yvonne & Gerard Ziegler
Sharon Shavitt & Steven
Zimmerman

And gifts from three Anonymous
donors

Student Loop

Sudhanshu Agarwal
Evelyn Ashley
Ana Downing & David Balut
Abigail Berg
Jessica Blomberg
John Bullock
Yu-Ju Chang
Hsinju Chen
Kevin Chen
Pyunghwa Choi
Trisha Choudhary
Ozum Erzurumlu
Qiuling Fan
Ruo-Jing Ho
Daniel Hong
Chang Hu
Muyan Hu
Molly Jennings
Abhishek Joshi
Matt Kelley
Kathryn King
Zackary Landers
Julia Lee
Cassie Liu
Hongyi Liu
Liam McBride
Jacob McGrath
Isaiah Menard
Rachel Moan
Qiaoyi Nie
Avanthi Obadage
Matthew O'Brien
Yanni Ovalle
Kyuri Park

Samuel Rosner
Paul Rozzi
Mary Sanderson
Joseph Self
Keyi Shen
Wilson Shrout
Jinghan Sun
Zhuoqi Tao
Zeyu Tian
Thin Tran
Rebecca Vandewalle
Gloria Wang
Po-Wen Wang
Irene Wilken
Ananya Yammanuru
Yi Yang
Yuyuan Yang
Christopher Young
Lisa Young
Hongrui Zhao
Yucheng Liang & Zhongmin Zhu
And a gift from one Anonymous
donor

Honorary Gifts to the Loop

In honor of Adi Berman
Maya Crystal
In honor of Marie Cassioppi
Kevin Langreck
In honor of Gail W. Hague
Devon Hague & Dallas Trinkle
In honor of Richard Noel
Matthew Noel
In honor of Doug Nelson
Patricia Powell
In honor of Mary A. Perlstein
Nancy & Kenneth Kirsch
In honor of Shozo Sato
Kristin Patton & John Coleman

Memorial Gifts to the Loop

Jane M. Barrett
James Barrett
Alex P. Bhanos
Susanne Bhanos
Donald W. Clegg
Susan & John Townsend
Ralph D. DeMoss
Linda & Edwin Goebel

Norman K. Denzin
Katherine Ryan
Bob Eisenstein
Joyce Eisenstein
Walter T. Gunn
Julia & Gene Robinson
Sandy I Helman
Meredith Belber
Stephen Gobel
Elizabeth Simmons-O'Neill & John
O'Neill
Murray Robbins
Rose & Daniel Sloven
Nancy & Edward Tepper
Peter S. Kimble
Sandra Hamm
Jan, Harold, Lori, Tim, Dan, & Pat
Porterfield
Stephen Levinson
Robin & Robert Fossum
Nancy & Phillippe Geubelle
Ondine & George Gross
Janet & Douglas Nelson
Susan S. McDonald
Anonymous
Carolyn H. McElrath
Ellen & Gene Amberg
Joyce D. Meyer
Faye Lesht
Nancy F. Morse
Alice Pfeffer
Elizabeth Mulvaney & Christopher
Ramsey
Rosann G. Noel
Matthew Noel
Barbara Orden
Fran Abramson
Tara Blau & Ephraim Back
Carol Lite & Kenneth Cantor
Ann Einhorn
Sheila & Philip Krein
Jaclyn & Jeffrey Loewenstein
Melissa & Samuel Moore
Janet & Douglas Nelson
Michelle Perry
Alice Pfeffer
Jan & David Sholem
Jordan Smith
Audrey Wells & Jeff Zolitor

Annette H. Schoenberg
Jannette & Donald Helfrich
Scott R. White
Nancy Sottos

KRANNERT CENTER VOLUNTEERS

COMMUNITY VOLUNTEERS

Paula Abdullah
Charles Adegboide
David Allen
Elizabeth Allison
Shiela Anderson
Todd Anderson
Faith Arnold
Rocio Arroyave-Jamison
Richard Balsbaugh
Dan Bard
Assel Barinova
David Barnett
Jane Barry
Mary Berg
Ann Bergeron
Kathryn Bergeron
Andres Bielenberg
Cameron Bigler
Elisa Booth
Lisa Bourial
Deborah Bramowicz
George Brock
Jonne Brown
Reuben Brown
Jeff Buoy
Susan Cannon
Catherine Capei
John Carmody
Karen Chaddick
Felix Chan
Allen Chandlier
Katherine Chang
Sharon Chao
Molly Chartrand
Paige Chew
Trisha Choudhar
Pei Hsien Chu
Kathy Cimansky
Emma Rose Conway
Evie Cordell
Nicole Cruz
Pamela Cultra
Paul D'Agostino
Susan Darmody
Robert Daughery
Jean Davidson
Pamela De Ley

Tiffany Dean
Karen Decker
Lori Deyoung
Nancy DiBello
Sun Dieker
Janelle Dobbins
Rory Dodge
John Donovan
David Dorman
Tamara Ducey
Martin Dull
Debra Eichelberger
Stephanie Ellis
Beth Engelbrecht-Wiggans
Richard Engelbrecht-Wiggans
Roger Epperson
Beth Evans
DJ Evans
Clifford Federmeier
Judith Federmeier
Susan Feldman
Darwin Fields
Angela Fikes
Roger Fredenhagen
Michael Freeman
Isabella Galgano
David Gay
Sherry Geraths
Robin Goettel
Katrina Good
Barbara Gordon
Gene Grass
Robin Hadley
Katherine Hansen
Samuel Harrison
Christiana Heidich
Sarah Henn
Kathleen Henry
Jill Hieronymus
Casey Higgins
Brenda Hinthorn
Karen Hite
Carol Ho
Steve Holstein
Kaylee-Ann Hopkins
Clifford Jakopo
Cynthia Jean
Roland Jean
Linea Johnson

Ron Johnson
Marcy Joncich
Alice Jones
Barbara Jones
Dave Jordan
Mary Ann Judd
Carl Kagawa
Rashimi Kapoor
Debra Karplus
Rafal Kendracki
Cody Kielzman
Marina Kolodyazhnaya
Charles Kroner
Bruce Kruger
Susumu Kudo
Robert Lanier
Diane Lassila
Jake Lattyak
Sydney Lazarus
Rudy Leon
Qingyun Li
Jean Liang
Qingwen Liang
Lynn Lin
Lynda Lopez
Penny Lopez
Pezz Lopez
Virginia Lozar
Nico Lynx
Fallon MacFarland
Lorraine Maimborg
Christina Majchizak
Kendra Marsh
Maria Martin
Bobbi McCall
Jeannine McDonald
James McEnerney
Linda McEnerney
Bridget McGill
Emilee McGill
Linda Meachum
Kathleen Metcalf
Sharron Mies
Carol Miles
Carol Miller
Amy Mills
Julie Mills
Patrick Mills
Susan Mitze

Carol Mizrahi
Frank Modica
Lisa Mullins
Heather Munro
Christina Myers
Nguyen Nguyen
Debbie Nickey
Judy Nolan
Dick Norton
Angela O'Brien
Marjorie Olson
Volodymyr Opryschenko
Irem Orsei
Carol Osgood
Brenda Pacey
Cecillia Paoppi
Eric Peters
Brittney Pillow
Sarah Pirila
Mark Pollard
Tressa Porter
Renee Potter
Rosa Pullen
Robert Rasmus
Gloria Rendon
Gail Rice
Lan Richard
Nancy Rickey
Jordan Rinckenberger
Linda & Ronald Roaks
Judy Rudnicke
Teresa Rupsch
Barbara Schleicher
Mark Sellers
Christel Seyfert
Lei Shanhbag
Carolyn Sharp
William Shaw
Beth Shelton
Mary Shultz
Connie Smith
Pierre Stephens
Deb Stoltz
Carrie Storrs
Kelli Stretesky
Steven Stuff
Shandra Summerville
Zhuoqi Tao
Alice Taylor

John Taylor
Sarah Taylor
Donna Telley
Marissa Terronez
Catherine Testory
Tracy Thomas
Susan Thompson
Joy Thornton- Walker
Marina Tinone
Lee Trail
Karla Trimble
Owen Tucker
Delaney Valeso
Rodney Vanous
Patti VerStrat
Brenda Wakeland
Mary Walker
Qin Wang
Kelly Warner
Jean Weigel
Whitney Welsh
Taylor White
Liesel Wildhagen
Douglas Williams
Jessica Williams
Julie Wirth
Erik Wolfing
Lowre Young
Rui Zhao
Russell Zillman

Emma Chang
Xixi Chen
Ti-Chung Cheng
Judy Chiang
June Chun
Leanna Cui
Amanda DuVall
Yating Feng
Ramya Gandhi
Griffin Garrett-Grossman
Rashmi Ghonasgi
Vix Henry
Uma Iyer
Marge Jerich
Xiaorui Jiang
Yixuan Jin
Nithya Kalwala
Andrew Klopp
Susan Koernr
Maria Kozar
Mildred Kumar
Toby Kutz
Maria Kuzniar
Amani Lalial
Lucas Langley
Jessica Larri
Erin Lee
Isabella Lee
Joy Lee
Edward Li
Zilu Li
Tina Lin
Wei Liu
Xiangyi Liu
Utsav Majumdar
Liliana Mansfield
Anne Margalith
Emma Mayes
Morgan Miller
Ethan Miranda
Kevin Nie
Qiaoyi Nie
Nicholas Orr
Steven Ortega
Yingrui Ouyang
Suraj Patel
Wesley Pereira
Diana Pham
Natalia Rafalko
Malika Raffensperger-Schill
Eliza Refaqt
Nicolle Reynolds
Julia Rhodes

Jacqueline Perez Rivas
Trevor Santiago
Anna Schuster
Kaustabh Sharma
Dan Shen
Bangyan Shi
Zhan Shi
Patricia Simpson
Pratik Sinha
Daniel Song
Wenjie Song
Lea Stangenes
Deepak Subramanian
Pooja Tetali
Alexandria Thomas
Tejashree Tirunagari
Jenny Tran
Kelly Trevillian
Jiaxin Wan
Gloria Wang
Yining Wang
Cierra Welch
Samyla Williams
Nicholas Wooden
Ananya Yammanuru
Huiya Yang
Jie Zhang
Nicole Zhang
Bowang Zhou
Ino Zhu

**KRANNERT CENTER
STUDENT ASSOCIATION**

Aminah Adebayo
K. Rae Ambroz
Helen Anil
Yusra Ansari
Caroline Atkinson
Claire Baffes
Subhodeep Bakshi
Kirsten Barker
Josie Besch
Aakash Bhide
Surman Bhowmick
Alyx Bibbs
Nick Boivin
Zach Bottoms
Alexa Bucio
Andrew A. Butterworth
Danielle Caccamo
Alice Cao

KRANNERT CENTER STAFF

Mike Ross, Director
Cheryl Snyder, Director of Advancement
Terri Anne Ciofalo, Associate Director
for Production
Maureen V. Reagan, Associate Director
for Administration and Patron
Experience
Julianne Ehre, Assistant Director for
Programming and Engagement

EVENTS

Andrew Giza, Events Director
Andrew Almeter, Senior Production
Coordinator for Events
Bree Brock, Production Coordinator
for Events
Stanley Natonek, Theatrical Technical
Coordinator
Rachel Gladd, Performing Arts Events
Coordinator

PROGRAMMING AND ENGAGEMENT

Julianne Ehre, Assistant Director for
Programming and Engagement
Jason Finkelman, Artistic Director of
Global Arts Performance Initiatives
Emily Laugesen, Director of Community
Engagement
Sam Smith, Director of Civic Engagement
and Social Practice

ADVANCEMENT

Cheryl Snyder, Director of Advancement
Bethany Whoric, Associate Director
of Advancement
David Drake, Advancement Team
Assistant
Frank Niemeyer, FAA Annual Giving
Officer

OPERATIONS

Director's Office

Zia Moon, Krannert Center Showcase
Director, Office and Communications
Support Specialist
Vanessa Lane, Office Manager

Building Operations

John O. Williams, Facility Manager
Tony Mapson, Assistant Facility Manager
Joe Butsch, Building Electrician

Jared Painter, Assistant Chief Building
Operations Engineer
Scott Butler, Eric Carr, Emmett Catlin,
Austin Dearth, Sara Dietrich, John
Ekstrom, Jessica Fancher, Bryan
Franzen, Mark Lashbrook, Jacob Lerch,
Chad Schwenk, Attendants
Glenda Dalton, Operations Office
Support Associate

MARKETING

Maureen V. Reagan, Associate Director
for Administration and Patron
Experience

Communications

Sean Kutzko, Assistant Communications
Director
Nicholas Mulvaney, Art Director
Jodee Stanley, Program and Web Editor

Public Services

Amy Thomas, Food Services Director
Elizabeth Henke, Stage 5 Bar Manager
Michael Bunting, Hospitality Supervisor
Whitney Havice, Ticketing and Patron
Services Director
Ann-Marie Dittmann, Patron Services
Assistant Director
Ty Mingo, Assistant Ticket Services
Director
Jon Proctor, Nick Wurl, Ticket Sales
Supervisors
Adrian Rochelle, Front of House
Performance Supervisor
Scott Leon, Community Service Officer

PRODUCTION

Terri Anne Ciofalo, Director
of Production
Maria Miguens, Production Manager

Audio Department

Rick Scholwin, Audio Director
Alec LaBau, Associate Audio Director/
Video Director
Tyler Knowles, Assistant Audio Director

Costume Shop

Andrea Bouck, Costume Director
Richard Gregg, Costume Rentals Director/
Wardrobe Adviser/Associate Costume
Director

Paige Stewart-Rankins, Hair & Makeup
Supervisor
Julianna Steitz, First Hand
April McKinnis, EB McTigue,
Cutters/Drapers
Kari Little-McKinney, Theatrical Stitcher

Lighting Department

Lisa Kidd, Lighting Director
David Krupla, Associate Lighting Director
Nick Jukes, Theatrical Lighting
Coordinator

Properties Department

Adriane Binky Donley, Properties Director
Kira Lyon, Assistant Properties Director

Scene Shop

Ryan Schultz, Technical Director
Tatsuya Ito, Associate Technical Director
Bill Kephart, Scene Shop Chief Clerk
Bobby Reynolds, Theatrical Scene Shop
Coordinator
Kayley Woolums, Theatrical Scene Shop
Assistant

PERFORMING ARTS BUSINESS SERVICE CENTER

Macauley Allen, Business Services
Specialist
Debbie Delaney, Accounting Staff

WE'RE SO GLAD YOU'RE AT THE CENTER

We work to create the best possible setting for the experiences you seek and find here.

NECESSARIES

Restrooms are located in the foyers of Foellinger Great Hall, Tryon Festival Theatre, and Colwell Playhouse; the east entrances on the Lobby level; and in each elevator lobby on Level 1 and Level 3. Lobby restrooms and one restroom in each elevator lobby are fully accessible and contain baby-changing stations.

Ushers will be happy to provide you cough drops courtesy of St. Joseph Apothecary, or disposable foam earplugs if the place starts rockin'.

If you or a companion needs medical assistance, contact an usher or other staff member.

Please take a moment before the performance to note the theatre exits nearest to you. If it becomes necessary to evacuate the theatre, please remain calm, follow the instructions of the house staff, and exit in an orderly fashion to the appropriate safe meeting location, which will be announced to you.

PHONES AND DEVICES

The use of cell phones, cameras, and recording devices during performances is prohibited unless otherwise announced from the stage.

LATE ARRIVALS

As a courtesy to performers and audience members, latecomers will be seated only at times selected in advance by the artist. Should you find that you've arrived late to a performance, our Patron Services staff will keep you informed about the earliest seating opportunity.

LOST ITEMS

If you are in need of Lost and Found, please visit the Patron Services counter. We will do our best to reunite object and owner!

TICKET RETURNS

If you find you can't attend a performance, please contact the Ticket Office in advance, preferably by 6pm the day before the performance (kran-tix@illinois.edu or 217.333.6280). We never charge a handling fee on ticket transactions.

ACCESSIBILITY

Krannert Center for the Performing Arts is committed to making experiences accessible for all patrons, and we are delighted to provide a number of services to assist you. Krannert Center is equipped with an assisted listening system, wheelchair-accessible and no-step/few-step seating, and large-print programs, Braille programs, and American Sign Language interpreters are available with three weeks' advance notice.

For assistance regarding your visit, please contact patronservices@krannertcenter.illinois.edu or 217.333.9716 or visit go.KrannertCenter.com/Accessibility.

Para ayuda en relación con su visita, favor de enviar un email a:

Pour vous aider dans votre visite, prière de nous envoyer un courriel à:

欢迎! 如若您对您的造访需要帮助, 请发送电子邮件至:

स्वागत हे! अगर आपको अपने रहने के लिए मदद चाहिए, ईमेल कीजिए:

환영합니다! 방문에 관해 도움이 필요하실 때에는...
에게 이메일로 문의하시기 바랍니다:

PATRONSERVICES@KRANNERTCENTER.ILLINOIS.EDU
217.333.9716

WE OCT 23 AT 7:30PM



**THE
CHARLES LLOYD
QUARTET**