

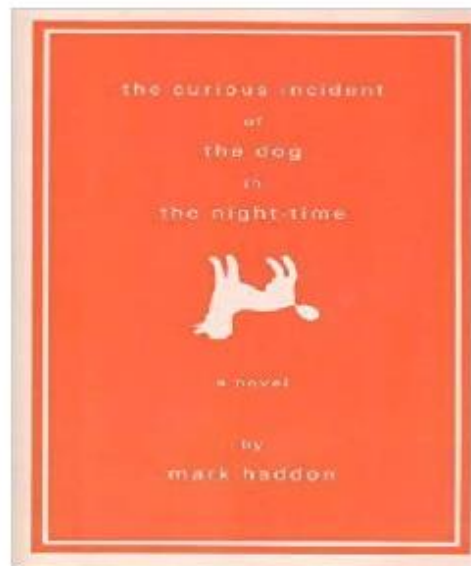
What to Expect When Going to See a Play at Krannert Center:





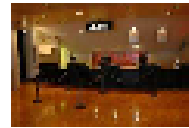
Krannert Center will be having a performance of a play called:

"The Curious Incident
of the Dog
in the Night-Time"



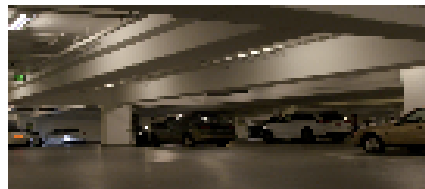
There are some things you need to think about when attending a performance at Krannert Center.

First, you will need to buy a ticket.



Second, you need to know where Krannert Center is and where to park.

Krannert Center is located at 500 South Goodwin Avenue in Urbana, Illinois. Krannert Center has underground parking that is free on the weekends and in the evening.



There are elevators in the garage that take you up to the theatres.

Lastly, you need to know which theatre your production will be in. Krannert Center has many theatres.

When attending a performance you need to remember that it is happening live. It is not like TV or a movie where you can rewind if you miss something.

Sometimes it is so thrilling when you attend a performance that you want to get goofy, laugh, and shout. But remember that when the play begins, everyone in the audience has a responsibility. You are a part of the play. The actors can see you, hear you, and feel you. If you are talking, you will miss something. Your attention and energy are part of the experience of attending the performance.





There are rules to follow when attending a theatre performance.

The Rules:

1. Stay quiet.

Performance is a time to think inwardly, not a time to share your thoughts aloud.

2. No food in the auditorium.

Snacks are noisy and can be distracting.

3. Stay in your seat, if possible.

Walking through the aisles during the performance is disruptive.

4. Turn off cell phones and other electronic devices.

When devices go off it is very distracting for actors and the audience.

"The Curious Incident
of the Dog in the
Night-Time" will be
shown in the Colwell
Playhouse at Krannert Center.



It is a theatre with a steep bank
of seats, no center aisles,
curved, black walls, and red seats.

An usher can help you find your
seat. There will be continuous
seating which means audience
members will be able to
enter late and come and go as needed.

During the play there may be bright
lights and a lot of movement.

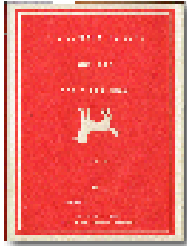
If an audience member gets uncomfortable with the lights, noise, or movement during the play, they should quietly and discreetly leave the theatre.

There will be a safe place outside the theatre where audience members can reset. A TV monitor will be available to watch the show from outside the theatre.

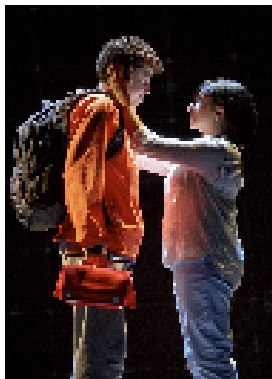


Audience members are welcome to bring a quiet fidget toy if that would help them remain calm.





The play being presented at Krannert Center, "The Curious Incident of the Dog in the Night-Time" is about a 15 year old boy named Christopher. He has a mystery to solve. Someone has killed the next-door neighbor's dog with a pitch fork. Christopher is a suspect. Christopher is determined to discover who killed the dog. His father does not want him to get involved. Christopher's detective work ends up taking him on a frightening journey that tears apart his once- familiar world.





By following theatre etiquette
and rules, everyone
can enjoy the performance.